

## Product datasheet for **RG230311**

### nephronectin (NPNT) (NM\_001184690) Human Tagged ORF Clone

#### Product data:

Product Type:	Expression Plasmids
Product Name:	nephronectin (NPNT) (NM_001184690) Human Tagged ORF Clone
Tag:	TurboGFP
Symbol:	nephronectin
Synonyms:	EGFL6L; POEM
Mammalian Cell Selection:	Neomycin
Vector:	pCMV6-AC-GFP (PS100010)
E. coli Selection:	Ampicillin (100 ug/mL)



[View online »](#)

**ORF Nucleotide Sequence:**

>RG230311 representing NM\_001184690  
 Red=Cloning site Blue=ORF Green=Tags(s)

TTTTGTAATACGACTCACTATAGGGCGGCCGGAATTCGTCGACTGGATCCGGTACCGAGGAGATCTGCC  
 GCC**CGGATCGCC**

ATGGATTTTCTCCTGGCGCTGGTGTATCCTCGCTCTACCTGCAGGCGGCCGCGAGTTTCGACGGGA  
 GGTGGCCAGGCAAATAGTGTATCGATTGGCCTATGTCGTTATGGTGGGAGATTGACTGCTGCTGGG  
 CTGGGCTCGCCAGTCTTGGGACAGTGTCAACCTTTCTACGTCTTAAGGCAGAGAATAGCCAGGATAAGG  
 TGCCAGCTCAAAGCTGTGTGCCAACACGATGCAACATGGTGAATGTATCGGGCCAAACAAGTGAAGT  
 GTCATCCTGGTTATGCTGGAAAACTGTAAATCAAGATCTAAATGAGTGTGGCCTGAAGCCCCGGCCCTG  
 TAAGCACAGGTGCATGAACACTTACGGCAGCTACAAGTGTACTGTCTCAACGGATATATGCTCATGCCG  
 GATGGTTCCTGCTCAAGTGCCCTGACCTGCTCCATGGCAAATGTCAGTATGGCTGTGATGTTGTTAAAG  
 GACAAATACGGTGCCAGTCCCATCCCCTGGCCTGCAGCTGGCTCCTGATGGGAGGACCTGTGTAGATGT  
 TGATGAATGTGCTACAGGAAGAGCCTCCTGCCCTAGATTTAGGCAATGTGTCAACACTTTTGGGAGCTAC  
 ATCTGCAAGTGCATAAAGGCTTCGATCTCATGTATATTGGAGGCAAATATCAATGTCATGACATAGACG  
 AATGCTCACTTGGTCAGTATCAGTGCAGCAGCTTTGCTCGATGTTATAACATACGTGGGTCTACAAGT  
 CAAATGTAAGAAGGATACCAGGGTGTGGACTGACTTGTGTATATCCCAAAGTTATGATTGAACCT  
 TCAGGTCCAATTCATGTACCAAAGGAAATGGTACCATTTAAAGGGTGACACAGGAAATAATAATTGGA  
 TTCCTGATGTTGGAAGTACTTGGTGGCCTCCGAAGACCCATATATTCCTCCTATCATTACCAACAGGCC  
 TACTTCTAAGCCAACAACAAGACCTACACCAAAGCCAACCAATTCCTACTCCACCACCACCACCACC  
 CTGCCAACAGAGCTCAGAACACCTTACCACCTACAACCCAGAAAGGCAACACCACCGACTGACAATA  
 TAGCACAGCTGCCAGTACACCTCCAGGAGGATTACAGTTGACAACAGGGTACAGACAGACCTCAGAA  
 ACCCAGAGGAGATGTGTTCAATCCACGGCAACCTTCAAATGACTTGTGTTGAAATATTTGAAATAGAAGA  
 GGAGTCAGTGCAGACGATGAAGCAAAGGATGATCCAGGTGTTCTGGTACACAGTTGTAATTTGACCATG  
 GACTTTGTGGATGGATCAGGGAGAAAGACAATGACTTGCCTGGGAACCAATCAGGGACCCAGCAGGTGG  
 ACAATATCTGACAGTGTCCGAGCCAAAGCCCCAGGGGAAAAGCTGCACGCTTGGTGTACCTCTCGGC  
 CGCCTCATGCATTAGGGGACCTGTGCCTGTATTAGGCACAAGGTGACGGGGTGCCTCTGGCACAC  
 TCCAGGTGTTGTGAGAAAACACGGTGCCACGGAGCAGCCCTGTGGGAAGAAATGGTGGCCATGGCTG  
 GAGGCAACACAGATCACCTTGCAGGGGCTGACATCAAGAGCGTCGTCTCAAAGGTGAAAAAGGCGT  
 GGTCACTGGGAGATTGGATTAGATGATGTGAGCTTAAAAAGGCCACTGCTCTGAAGAACGC

**ACGCGT**ACGCGGCCGCTCGAG – GFP Tag – GTTTAA

**Protein Sequence:**

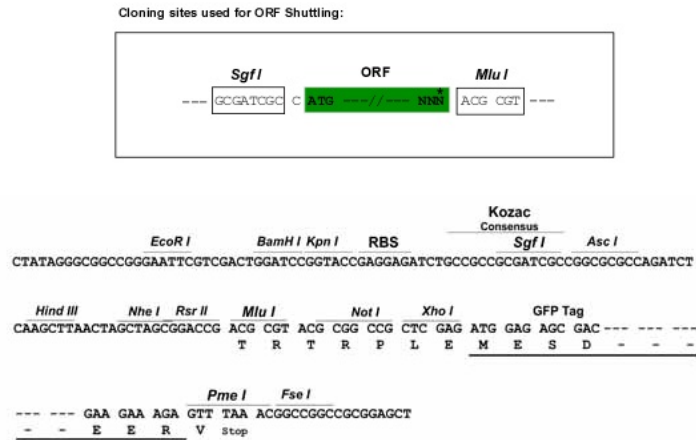
>RG230311 representing NM\_001184690  
 Red=Cloning site Green=Tags(s)

MDFLLALVLVSSLYLQAAAEFDGRWPRQIVSSIGLCRYGGRIDCCWGWARQSWGQCQPFYVLRQRIARIR  
 CQLKAVCQPRCKHGEICIPNKCKCHPGYAGKTCNQDLNECGLKPRPKHRCMNTYGSYKCYCLNGYMLMP  
 DGSCSSALTCSMANQYGCDDVVKQIRCQCPSPGLQLAPDGRTCVDVDECATGRASCPRFRQCVNTFGSY  
 ICKCHKGFDLMYIGGKYQCHDIDECSLGQYQCSSFARCYNIRGSYKCKKEGYQGDGLTCVYIPKVMIEP  
 SGPIHVPKNGTILKGDGNNWIPDVGSTWPPKTPYIPPIITNRPTSKPTTRPTPKPTPIPTPPPPPP  
 LPTELRTPLPPTTPERPTTGLTTIAPAASTPPGGITVDNRVQTDQKPRGDVFIQRQPSNDLFEIFEIER  
 GVSADDEAKDDPGLVHSCNFDHGLCGWIREKDNLDHWEPIRDPAGGQYLTVSAAKAPGGKAARLVLPLG  
 RLMHSGDLCLSFRHKVTLHSGTLQVFRKHGAHGAALWGRNGGHGWRQTQITLRGADIKSVVFKGEKRR  
 GHTGEIGLDDVSLKKGHCSEER

**TRTRPLE** – GFP Tag – V

**Restriction Sites:**

SgfI-MluI

**Cloning Scheme:**


**ACCN:** NM\_001184690

**ORF Size:** 1746 bp

**OTI Disclaimer:** Due to the inherent nature of this plasmid, standard methods to replicate additional amounts of DNA in E. coli are highly likely to result in mutations and/or rearrangements. Therefore, OriGene does not guarantee the capability to replicate this plasmid DNA. Additional amounts of DNA can be purchased from OriGene with batch-specific, full-sequence verification at a reduced cost. Please contact our customer care team at [custsupport@origene.com](mailto:custsupport@origene.com) or by calling 301.340.3188 option 3 for pricing and delivery.

The molecular sequence of this clone aligns with the gene accession number as a point of reference only. However, individual transcript sequences of the same gene can differ through naturally occurring variations (e.g. polymorphisms), each with its own valid existence. This clone is substantially in agreement with the reference, but a complete review of all prevailing variants is recommended prior to use. [More info](#)

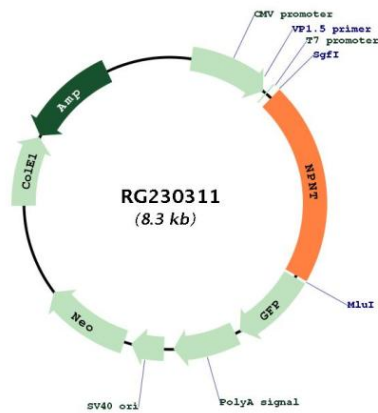
**OTI Annotation:** This clone was engineered to express the complete ORF with an expression tag. Expression varies depending on the nature of the gene.

**Components:** The ORF clone is ion-exchange column purified and shipped in a 2D barcoded Matrix tube containing 10ug of transfection-ready, dried plasmid DNA (reconstitute with 100 ul of water).

- Reconstitution Method:**
1. Centrifuge at 5,000xg for 5min.
  2. Carefully open the tube and add 100ul of sterile water to dissolve the DNA.
  3. Close the tube and incubate for 10 minutes at room temperature.
  4. Briefly vortex the tube and then do a quick spin (less than 5000xg) to concentrate the liquid at the bottom.
  5. Store the suspended plasmid at -20°C. The DNA is stable for at least one year from date of shipping when stored at -20°C.

RefSeq: [NM\\_001184690.2](#)  
 RefSeq Size: 4643 bp  
 RefSeq ORF: 1749 bp  
 Locus ID: 255743  
 UniProt ID: [Q6UXI9](#)  
 Cytogenetics: 4q24  
 Protein Families: Druggable Genome  
 Gene Summary: Functional ligand of integrin alpha-8/beta-1 in kidney development. Regulates the expression of GDNF with integrin alpha-8/beta-1 which is essential for kidney development. May also play a role in the development and function of various tissues, regulating cell adhesion, spreading and survival through the binding of several integrins (By similarity).[UniProtKB/Swiss-Prot Function]

**Product images:**



Circular map for RG230311