

Product datasheet for **RG230303**

SCMH1 (NM_001172220) Human Tagged ORF Clone

Product data:

Product Type:	Expression Plasmids
Product Name:	SCMH1 (NM_001172220) Human Tagged ORF Clone
Tag:	TurboGFP
Symbol:	SCMH1
Synonyms:	Scml3
Mammalian Cell Selection:	Neomycin
Vector:	pCMV6-AC-GFP (PS100010)
E. coli Selection:	Ampicillin (100 ug/mL)



[View online »](#)

ORF Nucleotide Sequence:

>RG230303 representing NM_001172220
 Red=Cloning site Blue=ORF Green=Tags(s)

TTTTGTAATACGACTCACTATAGGGCGGCCGGGAATTCGTCGACTGGATCCGGTACCGAGGAGATCTGCC
 GCC**CGGATCGCC**

ATGAAATTGGAAGCACAGGACCCAGGAACACCACATCCACCTGTATTGCCACAGTAGTTGGACTGACAG
 GTGCCCGCTTCGCCTGCGCCTTGATGGGAGCGACAACAAAAATGACTTCTGGCGGCTGGTTGACTCAGC
 TGAAATCCAGCCTATTGGGAAGTGTAAAAAGAATGGGGGTATGCTACAGCCACCTCTGGATTTCCGGCTG
 AATGCGTCTTCTGGCCCATGTTCTTTTGAAGACGCTAAATGGAGCAGAGATGGCTCCCATCAGGATTT
 TCCACAAGGAGCCACCATCGCCTCCCACAACCTCTTCAAATGGGAATGAAGCTAGAAGCTGTGGACAG
 GAAGAACCCTCATTTATTTGCCAGCCACTATTGGGGAGGTTCCGGGCTCAGAGGTGCTTGTCACTTTT
 GATGGGTGGCGAGGGCCTTTGACTACTGGTCCGCTTCGACTCCCGAGACATCTCCCTGTGGGCTGGT
 GTTCTTGACTGGAGACAACCTGCAGCCTCCTGGCACAAAGTTGTATTCAAAGAATCCCTATCTCTGC
 CTCGATGTGAATACTGAGAAGCCAGCATCCACAGCAGCACAAAAGTGTCTTGAACATCAACCAGGG
 CAGAGGGGGCGTAAACCAGGAAAGAAGCGGGGCCGACACCCAAGACCCTAATTTCCCATCCCATCTCTG
 CCCATCCAAGACAGCTGAACCTTTGAAATTCCAAAGAAGAGAGGTCCCAAACCTGGCAGCAAGAGGAA
 ACCTCGGACTTTGCTGAACCCACCACCTGCCTCACCAACAACCAGCACTCCTGAACCGGATACCAGCACT
 GTACCCAGGATGCTGCCACCATCCCCAGCTCAGCCATGCAGGCCCAACAGTTTGTATCTACTTGAACA
 AGAATGGCAGCACAGGCCCCACTTAGATAAGAAGAAGGTCCAGCAACTCCCTGACCATTTTGGACCAGC
 CCGTGCCTCTGTGGTGTGCAGCAGGCTGTCCAGGCTGTATCGACTGTGCTTATCACCAGAAAACCGTC
 TTCAGTTCCTCAAGCAAGGCCATGGTGGTGAGGTTATCTCAGCCGTGTTGACCGGGAACAGCATACCC
 TCAACTCCCAGCAGTCAACAGCATCACCTACGCTCCGCTTCTGGAGAACTCTGCCACAACCTTCG
 TAGTGACAATCTGTTTGGCAACCAGCCCTTACACAGACTCACTTGTCACTCACTGCCATAGAGTACAGC
 CACAGCCACGACAGGTACCTACCAGGTGAAACCTTTGCTCTGGGAATAGTCTGGCCCGCTCCTTGAAC
 CACACTCAGACTCAATGGACTCTGCCTCAAATCCCACCAACCTTGTGAGCACCTCCCAAAGGCACCGGCC
 CTTGCTTTCATCTGTGGCCTCCACCAAGCACTGCCTCAGCTGTGCGCAGGCTATGCTCCAGGGGGTGC
 GACCGATACCTGGAGAGCCGCGATGCCTCTGACTGAGTGGCCGGGACCCCTCCTCATGGACAGTCGAGG
 ATGTGATGCAGTTTGTCCGGGAAGCTGATCCTCAGCTTGGACCCACGCTGACCTGTTTCGCAAACAGCA
 GATCGATGGCAAGGCCCTGCTGCTGCTGCGCAGTGACATGATGATGAAGTACATGGGCTGAAGCTGGG
 CCTGCACTCAAGCTCTCCTACCACATTGACCGGCTGAAGCAGGGCAAGTTC

ACGCGTACGCGGCCGCTCGAG – GFP Tag – GTTTAA

Protein Sequence:

>RG230303 representing NM_001172220
 Red=Cloning site Green=Tags(s)

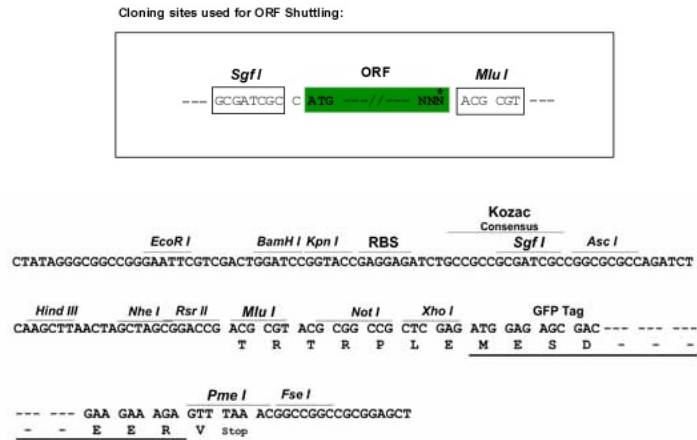
MKLEAQDPRNTTSTCIATVVGLTGARLRLRDGSDNKNDFWRLVDSAEIQPIGNCEKNGGMLQPPLGFRL
 NASSWPMFLKTLNGAEMAPIRIFHKPEPPSPSHNFFKMGMKLEAVDRKNPHFICPATIGEVRGSEVLVTF
 DGWRGAFDYWCRFDSRDIFPVGWCSLTGDNLQPPGKVVIPKNPYASDVNTEKPSIHSSTKTVLEHQPG
 QRGRKPGKKRGRTPKTLISHPISAPSKTAEPLKFPKRGPKPGSKRKPRTLLNPPASPTTSTPEPDTST
 VPQDAATIPSSAMQAPTVCIIYLNKNGSTGPHLDKHKVQQLPDHFGPARASVVLQQAVQACIDCAYHQKTV
 FSFLKQGHGGEVISA VFDREQHTLNLPAVNSITYVLRFLLEKLNLRSDNLFNGQPFTQTHLSLTAIEYS
 HSHDRYLPGETFVLGNSLARSLEPHSDSMSASNPTNLVSTSQRHRPLLSGCLPPSTASAVRRLCSRGS
 DRYLESRDASRLSGRDPSSWTVEDVMQFVREADPQLGPHADLFRKHEIDGKALLLLRSDMMMKYMGKLG
 PALKLSYHIDRLKQGKF

TRTRPLE – GFP Tag – V

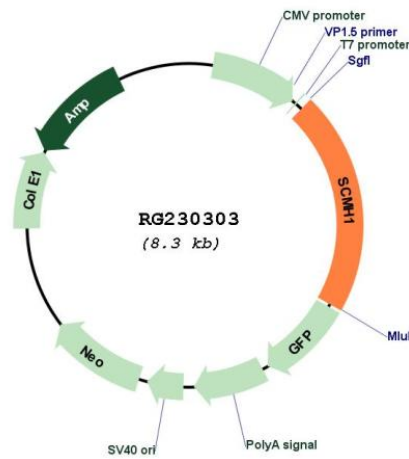
Restriction Sites:

Sgfl-MluI

Cloning Scheme:



Plasmid Map:



ACCN: NM_001172220
 ORF Size: 1731 bp

OTI Disclaimer:	The molecular sequence of this clone aligns with the gene accession number as a point of reference only. However, individual transcript sequences of the same gene can differ through naturally occurring variations (e.g. polymorphisms), each with its own valid existence. This clone is substantially in agreement with the reference, but a complete review of all prevailing variants is recommended prior to use. More info
OTI Annotation:	This clone was engineered to express the complete ORF with an expression tag. Expression varies depending on the nature of the gene.
Components:	The ORF clone is ion-exchange column purified and shipped in a 2D barcoded Matrix tube containing 10ug of transfection-ready, dried plasmid DNA (reconstitute with 100 ul of water).
Reconstitution Method:	<ol style="list-style-type: none">1. Centrifuge at 5,000xg for 5min.2. Carefully open the tube and add 100ul of sterile water to dissolve the DNA.3. Close the tube and incubate for 10 minutes at room temperature.4. Briefly vortex the tube and then do a quick spin (less than 5000xg) to concentrate the liquid at the bottom.5. Store the suspended plasmid at -20°C. The DNA is stable for at least one year from date of shipping when stored at -20°C.
RefSeq:	NM_001172220.2
RefSeq Size:	3084 bp
RefSeq ORF:	1734 bp
Locus ID:	22955
UniProt ID:	Q96GD3
Cytogenetics:	1p34.2
Protein Families:	Transcription Factors
Gene Summary:	Associates with Polycomb group (PcG) multiprotein complexes; the complex class is required to maintain the transcriptionally repressive state of some genes.[UniProtKB/Swiss-Prot Function]