

Product datasheet for **RG230301**

ZNF573 (NM_001172689) Human Tagged ORF Clone

Product data:

Product Type:	Expression Plasmids
Product Name:	ZNF573 (NM_001172689) Human Tagged ORF Clone
Tag:	TurboGFP
Symbol:	ZNF573
Mammalian Cell Selection:	Neomycin
Vector:	pCMV6-AC-GFP (PS100010)
E. coli Selection:	Ampicillin (100 ug/mL)



[View online »](#)

ORF Nucleotide Sequence:

>RG230301 representing NM_001172689
 Red=Cloning site Blue=ORF Green=Tags(s)

TTTTGTAATACGACTCACTATAGGGCGGCCGGAATTCGTCGACTGGATCCGGTACCGAGGAGATCTGCC
 GCCGCGATCGCC

ATGATTTTGGGGGAAACACAGTTCACAGATTTGGATTACAGTGTGAGATAATCAGCTACATAGAAG
 TACCCACTTATGAAACAGATATATCCTCTACACAACCTCAGAGCATATATAAGAGAGAGAACTCTATGA
 ATGTAAGAAATGTCAGAAGAAATTTAGTAGTGGTTATCAACTTATTCTACATCACAGTTTCATGTCATT
 GAGAGACCCTATGAATGCAAAGAGTGTGGGAAGAACTTTCGTAGTGGCTATCAACTTACTCTACATCAAA
 GATTTTCACTGGTGAGAAACCTATGAATGTACAGAATGTGGGAAGAACTTTAGAAGTGGTTATCAGCT
 GACTGTGCATCAGAGATTTCACTGGTGAGAAAACCTATGAATGTAGGCAGTGTGGGAAGGCCCTTTATA
 TATGCCTCACACATTGTTCAACATGAGAGAATTCACACTGGTGGGAAGCCGTATGAATGTCAGGAGTGTG
 GGAGGCCCTTAGTCAAGGTGGACATCTTAGAATTCATCAGAGAGTTCATACTGGCGAAAAACCATATAA
 ATGTAAGGAATGTGGGAAGACTTTTAGTAGGCGCTCAAATCTTGTGAACATGGGCAGTTTCATACTGAT
 GAGAAGCCATACATATGTGAGAAATGTGGAAAGCCCTTTAGAAGAGGTACCAGCTTACTGTACATCAGA
 GAGTTCACACTGGTAAAAAGCCATATGAGTGTAAGAATGTGGGAAGGGCTATACCACTGCCTCATACTT
 TCTTCTACATCAGAGAATTCATAAAGGTGGAAAACCTATGAATGTAAGGAGTGTAAAGAAACCTTACT
 TTGTATAGAAATCTTACTCGGCATCAGAATATTCATACTGGTGAGAACTTTTGAATGCAAGCAATGTG
 GGAAGACCTATACTACTGGTTCAAAACCTTTCAACATCAGAAAACCTATACTGGCGAGAAAACCTATGA
 ATGCAAGGAATGCGGAAAGCCCTTAGCTTGTATGGCTACCTAAACAACATCAGAAAATTCATACTGGC
 ATGAAACACTTTGAATGTAAGGAGTGTAAAAAACCTTTACTTTGTATAGAAATCTTACTCGACATCAGA
 ATATTCACACTGGTAAGAAACTTTTGAATGTCAGGAATGTGGGAAGCCCTATAGTACTGGCTCAAACCT
 TATTCACATCGGAAAACCTATACTGGTGAGAAAACCTATAAATGTAAGGAATGTGGCAAGACCTTTAGC
 TTGCATGGATATCTTAATCAACATCAGAAAATTCATACTGGTATGAAACCTATGAATGTAAAGGTATGTA
 GAAAAACCTTTACTTTCTATAGAAATCTTACTCTACATCAAAGTATTCATACTGATGAGAAAACCTTTTGA
 ATGTAAGGAATGTGGGAAGACCTTTAGACGTAGTTCACACCTTACTGCACATCAGAGCATTATGCTGAT
 AAAAAACCTATGAATGTAAGAATGTGGAAAGCCCTTTAAAATGTATGGCTACCTACCCAACATCAGA
 AAATTCATACTGGTGGAAAACCTATGAATGTAAGAATGTGGGAAGCCCTTCAGTCGTGCTTCAAACCT
 TGTTCAACATGAGAGAATTCATACTGGTGAGAAAACCTATGTGTGAAGCAGTGTGGAAAACCTTCAGA
 TATGGTTCAGCCCTTAAGCCCATCAGAGAATTCATAGGAGCATAAAAGT

ACGCGTACGCGGCCGCTCGAG – GFP Tag – GTTTAA

Protein Sequence:

>RG230301 representing NM_001172689
 Red=Cloning site Green=Tags(s)

MILREETQFTDLDLQCEIISYIEVPTYETDISSTQLQSIYKREKLYECKKCQKFFSSGYQLILHHRFHVI
 ERPYECKEKGKFNFRSGYQLTLHQRFHTGEKPYECTECGKNFRSGYQLTVHQRFHTGEKTYEQRQCGKAFI
 YASHIVQHERIHTGGKPYEQCEGGRFASQGGHLRIHQRVHTGEKPYKCKEKGKTFRRSNLVHGHQFHTD
 EKPYICEKCGKAFRRGHQLTVHQRVHTGKPYECKEKGKTYTASYFLLHQRIHKGGKPYECKECKKFTT
 LYRNLTRHQNIIHTGEKLFECKQCGKTYTTGSKLFQHQKTHTEKPYECKEKGKAFSLYGYLQHQKIHGT
 MKHFECKECKKFTLYRNLTRHQNIIHTGKLFECQEGKAYSTGSNLIQHRKTHTEKPYKCKEKGKTFSS
 LHGYLNQHQKIHTGMKPYECKVCRKTFYRNLTLHQSIIHTDEKPFECKEKGKTFRRSSHLTAHQSIHAD
 KKPYECKEKGKAFKMYGLTQHQKIHTGGKPYECKEKGKAFSRASNLVQHERIHTGEKPYVCKQCGKTFR
 YGSALKAHQRIHRSIKV

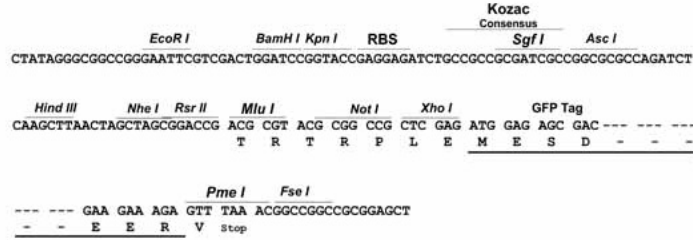
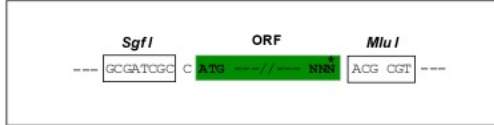
TRTRPLE – GFP Tag – V

Restriction Sites:

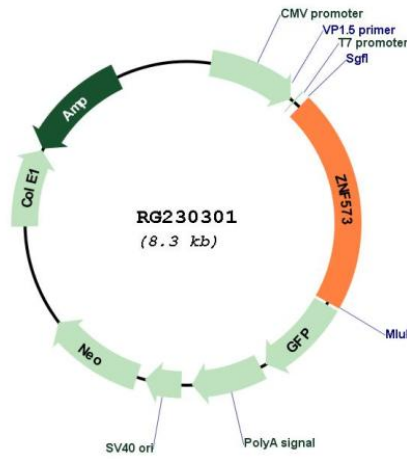
Sgfl-MluI

Cloning Scheme:

Cloning sites used for ORF Shutting:



Plasmid Map:



ACCN:

NM_001172689

ORF Size:	1731 bp
OTI Disclaimer:	The molecular sequence of this clone aligns with the gene accession number as a point of reference only. However, individual transcript sequences of the same gene can differ through naturally occurring variations (e.g. polymorphisms), each with its own valid existence. This clone is substantially in agreement with the reference, but a complete review of all prevailing variants is recommended prior to use. More info
OTI Annotation:	This clone was engineered to express the complete ORF with an expression tag. Expression varies depending on the nature of the gene.
Components:	The ORF clone is ion-exchange column purified and shipped in a 2D barcoded Matrix tube containing 10ug of transfection-ready, dried plasmid DNA (reconstitute with 100 ul of water).
Reconstitution Method:	<ol style="list-style-type: none">1. Centrifuge at 5,000xg for 5min.2. Carefully open the tube and add 100ul of sterile water to dissolve the DNA.3. Close the tube and incubate for 10 minutes at room temperature.4. Briefly vortex the tube and then do a quick spin (less than 5000xg) to concentrate the liquid at the bottom.5. Store the suspended plasmid at -20°C. The DNA is stable for at least one year from date of shipping when stored at -20°C.
RefSeq:	NM_001172689.1 , NP_001166160.1
RefSeq Size:	2448 bp
RefSeq ORF:	1734 bp
Locus ID:	126231
UniProt ID:	Q86YE8
Cytogenetics:	19q13.12
Protein Families:	Transcription Factors
Gene Summary:	May be involved in transcriptional regulation.[UniProtKB/Swiss-Prot Function]