

## Product datasheet for **RG230299**

### Adducin 2 (ADD2) (NM\_001185055) Human Tagged ORF Clone

#### Product data:

Product Type:	Expression Plasmids
Product Name:	Adducin 2 (ADD2) (NM_001185055) Human Tagged ORF Clone
Tag:	TurboGFP
Symbol:	ADD2
Synonyms:	ADDB
Mammalian Cell Selection:	Neomycin
Vector:	pCMV6-AC-GFP (PS100010)
E. coli Selection:	Ampicillin (100 ug/mL)



[View online »](#)

**ORF Nucleotide Sequence:**

>RG230299 representing NM\_001185055  
 Red=Cloning site Blue=ORF Green=Tags(s)

TTTTGTAATACGACTCACTATAGGGCGGCCGGAATTCGTCGACTGGATCCGGTACCGAGGAGATCTGCC  
 GCC**CGGATCGCC**

ATGCCCGCAGGAGAGTTCAGGAGCGAATTGCAAACCCACCGGAAAATGAGCGAAGAGACGGTCCCCG  
 AGGCTGCCTCGCCGCCGCCCGCCGAGGGCAGCCTTACTTTGACCGCTTCTCAGAGGACGACCCCGAGTA  
 CATGCGCCTTCGCAACCGGGCGCGGACCTGCGCAGGACTTCAACCTGATGGAGCAGAAGAAGCGCGTC  
 ACCATGATCCTGCAGAGTCCCTCTTTCAGGGAGGAGCTGGAAGGCCTCATCCAGGAGCAGATGAAGAAGG  
 GGAACAACTCTCCAACATCTGGGCCCTGCGACAGATCGCGGACTTATGGCCAGCACCTCCACGCAGT  
 CTTCCCGACATCTCCATGAATGTCTCCATGATGACGCCATCAATGACCTCCACACAGCTGACTCCCTG  
 AACCTGGCAAAGGGGAGCGGCTCATGCGGTGCAAGATCAGCAGTGTCTACCGACTCCTGGACCTCTATG  
 GCTGGGCCAGCTGAGTGACACCTATGTCAGTTGAGAGTCAGCAAGGAGCAGGACCACTCCTGATCAG  
 CCCTAAGGGAGTTTCTTGCAGTGAAGTACAGCGTCCAGCCTGATCAAGGTGAACATTCTGGGAGAGGTG  
 GTGGAGAAGGGCAGCAGCTGCTCCAGTGGACACCACAGGCTTCTGTCTGCACTCGGCCATCTATGCAG  
 CGAGGCCCGACGTGCGCTGCATCATCCACCTGCACACACCGGCCACAGCAGCGGTGTCGGCCATGAAGT  
 GGGCCTCTGCCTGTCTCCACAATGCCCTGCTGGTGGGGGACATGGCCTATTATGACTTCAATGGGGAA  
 ATGGAGCAGGAAGCCGATCGGATCAACCTGCAGAAGTGCCTTGGACCCACCTGCAAGATCCTGGTGTAA  
 GAAACCATGGAGTGGTTGCTCTGGGTGACACGGTAGAGGAGGCATTTTACAAGATCTTCCACCTGCAGGC  
 TGCATGTGAGATACAGGTGTCGGCTCTGTCCAGTCCCGGGGAGTGGAGAACCCTCATCTCCTGGAGCAG  
 GAGAAGCACCGGCCCATGAGGTGGGCTCCGTGCAGTGGGCCGGGAGCACCTTTGGGCCATGCAGAAGA  
 GTCCGGCTGGGGGAGCATGAGTTTGAAGCCCTCATGAGGATGCTGGACAACCTGGGCTACAGAACAGTTA  
 CAGTATCGCCACCCCTTTGTTCAAGAGAAAACCAAAACAAAAAGTGAAGTGGAGATTCCAGCCACGGTTC  
 ACAGCCTTCGTGTTTGAAGGAGCAGGTGCCCGGTGCCCGCCTGCGACAGCATGCCAGAACGAGCAGA  
 AGGAGAAGACCCGCTGGCTCAATACGCCAACACCTACCTGCGGGTCAATGTGGCCGATGAGGTCCAGAG  
 GAGCATGGGCAGCCCCGACCAAGACCAGTGGATGAAGGCTGACGAGGTGGAGAAATCCAGCAGTGGC  
 ATGCCGATTGCGATCGAAAACCAAAACCAATTTGTGCCTCTCTATACTGACCCCCAGGAAGTACTGGAGA  
 TGAGGAACAAGATTTCGAGAACAACCAAGATGTGAAGTCAAGGAGGCTCAGTCCCAGCTCCTGGC  
 GAGCGTCATTGCCGAGAAGAGCCGAAGCCCGGTAGAGCAGAGGCTGCCCTGACTGGCGGGAAACGTGT  
 TTGCCTCGGGTCTTCTGTGCCTGGGCTGGGTTGCAGGACCC

**ACGCGT**ACGCGGCCGCTCGAG – GFP Tag – GTTTAA

**Protein Sequence:**

>RG230299 representing NM\_001185055  
 Red=Cloning site Green=Tags(s)

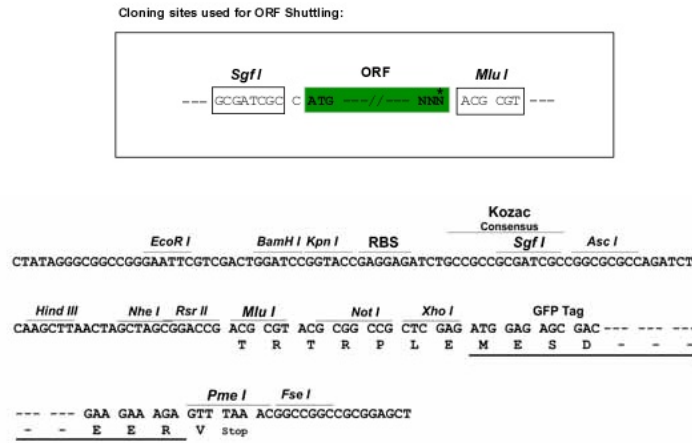
MRRRVPGANCKPTGKMSEETVPEAASPPPPQGPYFDRFSEDDPEYMRLRNRAADLRQDFNLMEQKKRV  
 TMILQSPSFREELEGLIQEQMKGNSSNIWALRQIADFMASHTSHAVFPTSSMNVSMMPINDLHTADSL  
 NLAKGERLMRCKISSVYRLLDLYGWAQLSDTYVTLRVSKEQDHFLLISPKGVSCSEVTASSLIKVNILGEV  
 VEKSSCFPVDTTGFLHSAIYAARPDVRCIIHLHTPATAAVSAMKWGLLPVSHNALLVGDMAYYDFNGE  
 MEQEADRINLQKCLGPTCKILVLRNHGVVALGDTVEEAFYKIFHLQAACEIQVSALSSAGGVENLILLEQ  
 EKHRPHEVGSVQWAGSTFGPMQKSRLGEHEFEALMRMLDNLGYRTGYTYRHPFVQEKTKHKSEVEIPATV  
 TAFVFEEDGAPVPALRQHAQKQKQEKTRWLNTPNTYLRVNVADDEVQRSMGSPRPKTTWMKADEVEKSSSG  
 MPIRIENPNQFVPLYTDPQEVLEMRNKIREQNRQDVKSAGPQSLLASVIAEKSRSPVEQRLPLTGGETC  
 LPSGSSVPGAGLQDP

**TRTRPLE** – GFP Tag – V

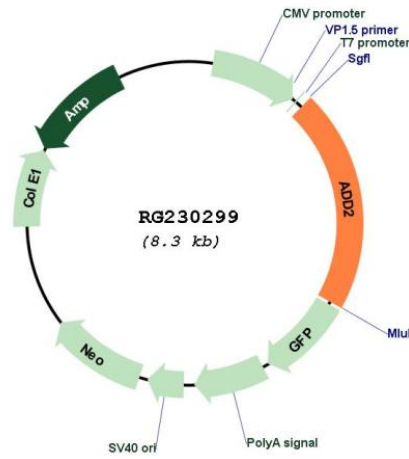
**Restriction Sites:**

SgfI-MluI

Cloning Scheme:



Plasmid Map:



ACCN: NM\_001185055

ORF Size: 1725 bp

<b>OTI Disclaimer:</b>	The molecular sequence of this clone aligns with the gene accession number as a point of reference only. However, individual transcript sequences of the same gene can differ through naturally occurring variations (e.g. polymorphisms), each with its own valid existence. This clone is substantially in agreement with the reference, but a complete review of all prevailing variants is recommended prior to use. <a href="#">More info</a>
<b>OTI Annotation:</b>	This clone was engineered to express the complete ORF with an expression tag. Expression varies depending on the nature of the gene.
<b>Components:</b>	The ORF clone is ion-exchange column purified and shipped in a 2D barcoded Matrix tube containing 10ug of transfection-ready, dried plasmid DNA (reconstitute with 100 ul of water).
<b>Reconstitution Method:</b>	<ol style="list-style-type: none"><li>1. Centrifuge at 5,000xg for 5min.</li><li>2. Carefully open the tube and add 100ul of sterile water to dissolve the DNA.</li><li>3. Close the tube and incubate for 10 minutes at room temperature.</li><li>4. Briefly vortex the tube and then do a quick spin (less than 5000xg) to concentrate the liquid at the bottom.</li><li>5. Store the suspended plasmid at -20°C. The DNA is stable for at least one year from date of shipping when stored at -20°C.</li></ol>
<b>RefSeq:</b>	<a href="#">NM_001185055.2</a>
<b>RefSeq Size:</b>	3707 bp
<b>RefSeq ORF:</b>	1728 bp
<b>Locus ID:</b>	119
<b>UniProt ID:</b>	<a href="#">P35612</a>
<b>Cytogenetics:</b>	2p13.3
<b>Gene Summary:</b>	Adducins are heteromeric proteins composed of different subunits referred to as adducin alpha, beta and gamma. The three subunits are encoded by distinct genes and belong to a family of membrane skeletal proteins involved in the assembly of spectrin-actin network in erythrocytes and at sites of cell-cell contact in epithelial tissues. While adducins alpha and gamma are ubiquitously expressed, the expression of adducin beta is restricted to brain and hematopoietic tissues. Adducin, originally purified from human erythrocytes, was found to be a heterodimer of adducins alpha and beta. Polymorphisms resulting in amino acid substitutions in these two subunits have been associated with the regulation of blood pressure in an animal model of hypertension. Heterodimers consisting of alpha and gamma subunits have also been described. Structurally, each subunit is comprised of two distinct domains. The amino-terminal region is protease resistant and globular in shape, while the carboxy-terminal region is protease sensitive. The latter contains multiple phosphorylation sites for protein kinase C, the binding site for calmodulin, and is required for association with spectrin and actin. Alternatively spliced transcript variants have been described. [provided by RefSeq, Jun 2010]