

Product datasheet for **RG230298**

DNA Polymerase lambda (POLL) (NM_001174084) Human Tagged ORF Clone

Product data:

Product Type:	Expression Plasmids
Product Name:	DNA Polymerase lambda (POLL) (NM_001174084) Human Tagged ORF Clone
Tag:	TurboGFP
Symbol:	POLL
Synonyms:	BETAN; POLKAPPA
Mammalian Cell Selection:	Neomycin
Vector:	pCMV6-AC-GFP (PS100010)
E. coli Selection:	Ampicillin (100 ug/mL)



[View online »](#)

ORF Nucleotide Sequence:

>RG230298 representing NM_001174084
 Red=Cloning site Blue=ORF Green=Tags(s)

TTTTGTAATACGACTCACTATAGGGCGGCCGGGAATTCGTCGACTGGATCCGGTACCGAGGAGATCTGCC
 GCC**CGCATCGCC**

ATGGATCCAGGGGTATCTTGAAGGCATTTCCAAGCGGCAGAAAATTCATGCTGATGCATCATCAAAG
 TACTTGCAAAGATTCTAGGAGGGAAGAGGGAGAAGAAGCAGAAGAGTGGCTGAGCTCCCTTCGGGCCCA
 TGTGTGCGCACTGGCATTGGACGAGCCCGGCAGAACTTTGAGAAGCAGATTGTTCCAGCATGGCGGC
 CAGCTATGCCCTGCCAGGGCCAGGTGTCACTCACATTGGTGGATGAAGGCATGGACTATGAGCGAG
 CCCTCCGCTTCTCAGACTACCCAGCTGCCCCGGGTGCTCAGCTGGTGAAGTCAGCCTGGCTGAGCTT
 GTGCCCTCAGGAGAGGAGGCTGGTGGATGTAGCTGGATTGAGCATCTTCATCCCCAGTAGTACTTGGAC
 CATCCACAGCCCAGCAAGGCAGAGCAGGATGCTTCTATTCTCCTGGCACCCATGAGGCCCTGCTTCAGA
 CAGCCCTTCTCCTCCTCCTCCACCAGGCCTGTGTCTCCTCCCAAAGGCAAAAGAGGCACCAAA
 CACCCAAGCCCAGCCATCTCTGATGATGAAGCCAGTGTGGGAAGAAACCCAGTTAGTGCAGCTGAT
 CTGGAAGCCCTCATCAGTGGCCACTACCCACCTCCCTTGAGGGAGATTGTGAGCCTAGCCAGCCCTG
 CTGTCCTGGATAAGTGGGTCTGTGCACAGCCCTCAAGCCAGAAGGCGACCAATCACAACTCCATATCAC
 AGAGAAGCTGGAAGTTCTGGCAAAGCCTACAGTGTTCAGGGAGACAAGTGGAGGGCCCTGGGCTATGCC
 AAGGCCATCAATGCCCTCAAGAGCTTCCATAAGCCTGTCACCTCGTACCAGGAGGCTGCAGTATCCCTG
 GGATTGGGAAGCGGATGGCTGAGAAAATCATAGAGATCCTGGAGAGCGGGCATTTCGCGAAGCTGGACCA
 TATCAGTGAGAGCGTGCCTGTCTGGAGCTTCTCCAACATCTGGGAGCTGGGACCAAGACTGCCAG
 ATGTGGTACCAACAGGGCTTCCGAAGTCTGGAAGACATCCGACCCAGGCCTCCCTGACAACCCAGCAGG
 CCATCGGCCTGAAGCATTACAGTGAATCTCTGGAACGTATGCCAGGGAGGAGGCTACAGAGATTGACCA
 GACAGTCCAGAAAAGCAGCCAGGCCTTTAACTCTGGGCTGCTGTGTGGCATGTGGTTTCATACCGACGG
 GAAAAGGCGACCTGTGGTGTGTCGACGTGCTCATCACTACCCAGATGGCCGGTCCCACCGGGGTATCT
 TCAGCCGCTCCTTGACAGTCTTCGGCAGGAAGGGTTCCTCACAGATGACTTGGTGGAGCCAAAGAGGAGAA
 TGGTCAGCAACAGAAGTACTTGGGGGTGTGCCGGCTCCAGGGCCAGGGCGGGCACCAGCGCCTGGAC
 ATCATCGTGGTGCCTATAGCGAGTTTGCCTGTGCCCTGCTCTACTTCACCGCTCTGCACACTTCAACC
 GCTCCATGCGAGCCCTGGCCAAAACCAAGGGCATGAGTCTGTGAGAACATGCCCTCAGCACTGCTGTGGT
 CCGGAACACCCATGGCTGCAAGGTGGGGCTGGCCGAGTGTGCCACTCCCACTGAGAAGGATGTCTTC
 AGGCTCTTAGGCCTCCCCTACCGAGAACCTGCTGAGCGGGACTGG

ACGCGTACGCGGCCGCTCGAG – GFP Tag – GTTTAA

Protein Sequence:

>RG230298 representing NM_001174084
 Red=Cloning site Green=Tags(s)

MDPRGILKAFPKRQKIHADASSKVLAKIPRREEGEEAEWLSSLRAHVVRTGIGRARAELFEKQIVQHGG
 QLCPAQGPVTHIVVDEGMDYERALLRLLPQLPPGAQLVKSASLSLCLQERRLVDVAGFSIFIPSRYL
 HPQPSKAEQDASIPPGTHEALLQTALSPPPPTRPVSPQKAKEAPNTQAQPISSDDEASDGEETQVSAAD
 LEALISGHYPTSLEGDCEPSPAPAVLDKWWCAQPSSQKATNHNHITTEKLEVLAKAYSVQGDKWRALGYA
 KAINALKSFHKPVTSYQEACSIPIGIGKMAEKIIEILESGLRKLHDHISESVPVLELFSNIWAGTKTAQ
 MWYQQGFRSLEDIRSQASLTQQAIGLKHYSDFLERMPREEATEIEQTVQKAAQAFNSGLLCVACGSYRR
 GKATCGDQVDVLI THPDGRSHRGIFSRLLDSLRLQEGFLTDDLVSQEENGQQQKYLGVCRLLPGPGRRHRLD
 IIVVPYSEFACALLYFTGSAHFNRSMRALAKTKGMSLSEHALSTAVVRNTHGCKVGPGRVLPPTTEKDV
 RLLGLPYREPAERDW

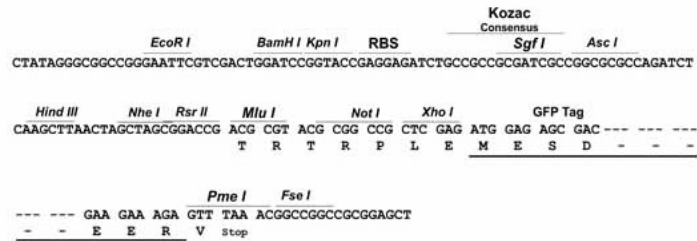
TRTRPLE – GFP Tag – V

Restriction Sites:

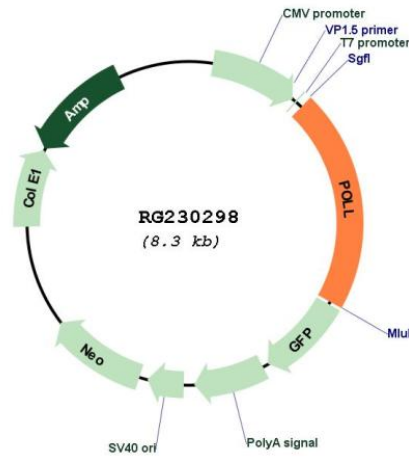
Sgfl-MluI

Cloning Scheme:

Cloning sites used for ORF Shutting:



Plasmid Map:



ACCN: NM_001174084
 ORF Size: 1725 bp

OTI Disclaimer:	<p>Due to the inherent nature of this plasmid, standard methods to replicate additional amounts of DNA in E. coli are highly likely to result in mutations and/or rearrangements. Therefore, OriGene does not guarantee the capability to replicate this plasmid DNA. Additional amounts of DNA can be purchased from OriGene with batch-specific, full-sequence verification at a reduced cost. Please contact our customer care team at custsupport@origene.com or by calling 301.340.3188 option 3 for pricing and delivery.</p> <p>The molecular sequence of this clone aligns with the gene accession number as a point of reference only. However, individual transcript sequences of the same gene can differ through naturally occurring variations (e.g. polymorphisms), each with its own valid existence. This clone is substantially in agreement with the reference, but a complete review of all prevailing variants is recommended prior to use. More info</p>
OTI Annotation:	<p>This clone was engineered to express the complete ORF with an expression tag. Expression varies depending on the nature of the gene.</p>
Components:	<p>The ORF clone is ion-exchange column purified and shipped in a 2D barcoded Matrix tube containing 10ug of transfection-ready, dried plasmid DNA (reconstitute with 100 ul of water).</p>
Reconstitution Method:	<ol style="list-style-type: none">1. Centrifuge at 5,000xg for 5min.2. Carefully open the tube and add 100ul of sterile water to dissolve the DNA.3. Close the tube and incubate for 10 minutes at room temperature.4. Briefly vortex the tube and then do a quick spin (less than 5000xg) to concentrate the liquid at the bottom.5. Store the suspended plasmid at -20°C. The DNA is stable for at least one year from date of shipping when stored at -20°C.
RefSeq:	NM_001174084.2
RefSeq Size:	2804 bp
RefSeq ORF:	1728 bp
Locus ID:	27343
UniProt ID:	Q9UGP5
Cytogenetics:	10q24.32
Protein Families:	Druggable Genome
Protein Pathways:	Base excision repair, Non-homologous end-joining
Gene Summary:	<p>This gene encodes a DNA polymerase. DNA polymerases catalyze DNA-template-directed extension of the 3'-end of a DNA strand. This particular polymerase, which is a member of the X family of DNA polymerases, likely plays a role in non-homologous end joining and other DNA repair processes. Alternatively spliced transcript variants have been described. [provided by RefSeq, Mar 2010]</p>