

Product datasheet for **RG230277**

ZNF37A (NM_001178101) Human Tagged ORF Clone

Product data:

Product Type:	Expression Plasmids
Product Name:	ZNF37A (NM_001178101) Human Tagged ORF Clone
Tag:	TurboGFP
Symbol:	ZNF37A
Synonyms:	KOX21; ZNF37
Mammalian Cell Selection:	Neomycin
Vector:	pCMV6-AC-GFP (PS100010)
E. coli Selection:	Ampicillin (100 ug/mL)



[View online »](#)

ORF Nucleotide Sequence:

>RG230277 representing NM_001178101
 Red=Cloning site Blue=ORF Green=Tags(s)

TTTTGTAATACGACTCACTATAGGGCGGCCGGAATTCGTCGACTGGATCCGGTACCGAGGAGATCTGCC
 GCC**CGCATCGCC**

ATGATCACATCCCAGGGATCAGTGTCTGTTAGGGATGTGACTGTGGGCTTCACTCAAGAGGAGTGGCAGC
 ATCTGGACCCTGCTCAGAGGACCCTGTACAGGGATGTGATGCTGGAGAACTACAGCCACCTTGTCTCAGT
 AGGGTATTGCATTCTAAACCAGAAGTGATTCTCAAGTTGGAGAAAGCGAGGAGCCATGGATATTAGAG
 GAAAAATTTCAAAGCCAGAGTCACTCTGGAATTAATTAATACCAGTAGAACTATTCAATAATGAAGTTCA
 ATGAGTTTAAACAAAGGTGGAAAAATGTTTCTGTGATGAAAAGCATGAAATAATTCATTCTGAAGAGGAACC
 TTCTGAATATAATAAAAAATGGGAACAGCTTCTGGCTGAATGAAGACCTCATTGGCATCAGAAAAATAAA
 AATTGGGAACAATCTTTGAATACAATGAATGTGGGAAAGCTTCCCTGAGAATCACTCTTCTCTGTAC
 ATAAGAGAGGTTACACAGGACAGAAAACCTGCAAAATACTGAACATGGGAAAACCTGTGATATGCATT
 TTTCACTACTCATCAGCAACACATCCAAGAGAAAACCACTATGGTAATGAATGTGGAGAAAATATCTTT
 GAGGAATCCATTCTCTTGAACATCAGAGTGTTTACCCATTACAGCCAGAAGTTAAATCTCACTCCAATTC
 AGAGAACCCTCAATTAACAATATTATTGAATATAATGAGTGTGGAAACATTTTTCACTGAAAAATTAGT
 CCTTCAATTTACAACAGAGAACACATACAGGAGAAAAACCTTATGAATGTCATGAATGTGGAAAAACCTTC
 ACCCAGAAGTCAGCCACACAAGACATCAGAGAACACACAGGGGGAAAAACCTATGAATGTGATGAAT
 GTGGGAAGACCTTCTATAAGAATTCAGACCTCATTAAACATCAAAGAATTCATACAGGGGAGAGACCTTA
 TGGATGTCATGAATGTGGGAAATCCTTCAGTGAAGTCAACCTTACTCAACATCAAAGAAGCAGACACA
 GGGGAGAAACCATATGAATGTCATGAATGTGGGAAAACCTTCTCATTAAAGTCAGTCTTACTGTGCATC
 AGAAAACACACACAGGGGAGAAGCCCTATGAATGCTATGCATGTGGGAAAGCCTTCTCAGAAAAATCAGA
 CCTCATTAAACATCAAAGAATACACACAGGTGAAAAACCTTATGAATGAATGAATGTGGGAAAGTCATT
 TCTGAGAAGTCAACCTTACTAAACATCTAAGAACTCACACAGGTGAGAAACCTTATGAATGATTCAGT
 GTGGAAAAATTTTCTGCTACTACTCCGGTTTACAGAACATCTGAGAAGACACACAGGGGAGAAACCTTT
 TGGATGAATGAATGTGGGAAAACCTTCCGTCAGAAAGTCAGCCCTAATTGTTCCACAGAGAACTCATATA
 AGACAGAAACCTATGGATGAATCAATGTGGAAAATCATTCTGTGTGAAGTCAAACTCATTGCACATC
 ATAGAACACACACAGGGGAGAAACCTATGAATGAATGTTTGTGGAAAATCATTCTATGTTAAGTCAA
 ACTAAGTGTACATCAGAGAATACACTTGGGAGAAACCTATAAATGTAGTAAACGAGGGAAATTAATCT
 GGG

ACGCGTACGCGGCCGCTCGAG - GFP Tag - GTTTAA

Protein Sequence:

>RG230277 representing NM_001178101
 Red=Cloning site Green=Tags(s)

MITSQGSVSFRDVTVGFTQEWEQHLDPQRRLYRDVMLENYSHLVSVGYCIPKPEVILKLEKGEWPWILE
 EKFPSQSHLELINTSRNYSIMKFNEFNKGGKFCDEKHEIIHSEEEPSEYNKNGNSFWLNEDLIWHQKIK
 NWEQSFEYNECGKAFPENSLFLVHKRGYTGQKTKYTEHGKTCDSMFFITHQQTHPRENHYGNECGENIF
 EESILLEHQSVYVPSQKLNLTPIQRTHSINNIIEYNECGTFFSEKLVHLQQRTHTGEKPYECHECGKTF
 TQKSAHTRHQRTHTGGKPYECHECGKTFYKNSDLIKHQRIHTGERPYGCHCGKSFSEKSTLTQHQRTH
 GEKPYECHECGKTFSEKSVLTVHQKTHTGEKPYECYACGKAFLRSDLIKHQRIHTGEKPYECNECGKSF
 SEKSTLTKHLRTHTGEKPYECIQCGKFFCYYSGFTEHLRRHTGEKPFGCNECGKTFRQKSALIVHQRTHI
 RQKPYGCNQCGKSFVKSCLIAHHRTHTGEKPYECNVCGKSFYVKSCLTVHQRIHLGRNPINVVNEGNYS
 G

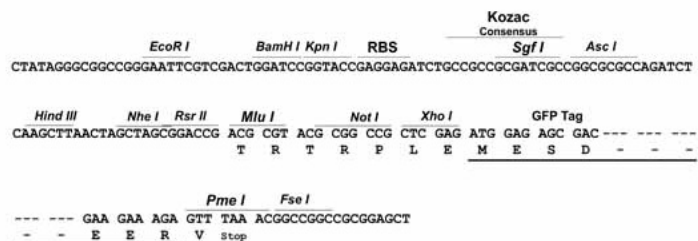
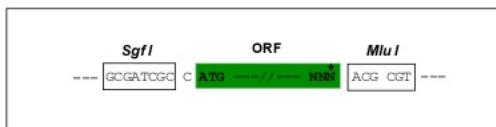
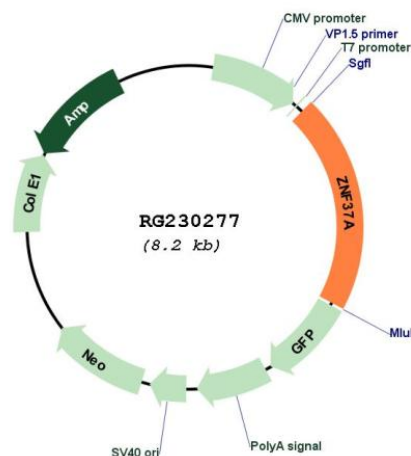
TRTRPLE - GFP Tag - V

Restriction Sites:

SgfI-MluI

Cloning Scheme:

Cloning sites used for ORF Shutting:


Plasmid Map:


ACCN: NM_001178101
 ORF Size: 1683 bp

OTI Disclaimer:	The molecular sequence of this clone aligns with the gene accession number as a point of reference only. However, individual transcript sequences of the same gene can differ through naturally occurring variations (e.g. polymorphisms), each with its own valid existence. This clone is substantially in agreement with the reference, but a complete review of all prevailing variants is recommended prior to use. More info
OTI Annotation:	This clone was engineered to express the complete ORF with an expression tag. Expression varies depending on the nature of the gene.
Components:	The ORF clone is ion-exchange column purified and shipped in a 2D barcoded Matrix tube containing 10ug of transfection-ready, dried plasmid DNA (reconstitute with 100 ul of water).
Reconstitution Method:	<ol style="list-style-type: none">1. Centrifuge at 5,000xg for 5min.2. Carefully open the tube and add 100ul of sterile water to dissolve the DNA.3. Close the tube and incubate for 10 minutes at room temperature.4. Briefly vortex the tube and then do a quick spin (less than 5000xg) to concentrate the liquid at the bottom.5. Store the suspended plasmid at -20°C. The DNA is stable for at least one year from date of shipping when stored at -20°C.
RefSeq:	NM_001178101.2
RefSeq Size:	6580 bp
RefSeq ORF:	1686 bp
Locus ID:	7587
UniProt ID:	P17032
Cytogenetics:	10p11.1
Protein Families:	Transcription Factors
Gene Summary:	May be involved in transcriptional regulation.[UniProtKB/Swiss-Prot Function]