

Product datasheet for **RG230273**

ARMCX5 (NM_001168485) Human Tagged ORF Clone

Product data:

Product Type:	Expression Plasmids
Product Name:	ARMCX5 (NM_001168485) Human Tagged ORF Clone
Tag:	TurboGFP
Symbol:	ARMCX5
Synonyms:	GASP5
Mammalian Cell Selection:	Neomycin
Vector:	pCMV6-AC-GFP (PS100010)
E. coli Selection:	Ampicillin (100 ug/mL)



[View online »](#)

ORF Nucleotide Sequence:

>RG230273 representing NM_001168485
 Red=Cloning site Blue=ORF Green=Tags(s)

TTTTGTAATACGACTCACTATAGGGCGGCCGGGAATTCGTCGACTGGATCCGGTACCGAGGAGATCTGCC
 GCC**GCGATCGCC**

ATGGTTGACTCTGGGACAGAAGCAAGGGCTAGAGGAAAGGCTGAGGCTGGCCTGCAAGATGGAATCAGTG
 GCCTGCCACTGCTAGAGTGAATGGTAAAACCCAGGCCGAGGCAGTGGCTGAGGCAGAAGCTGAAAACAGA
 ATCAGTGACCCAGGCCAAAGCTGGTGATGGAGCAATGACCAGGACACATACAGTGACCTACAGGGAGGCT
 ATGGCTGTGACAAGGGAAGTGATCAAGGTGGAAGATACAATAAGACTAGAGTCATGGTTGAGACTAAGA
 CAAAACCCCTGGCAGAACGCAGTATAGTGCCACAAACCAAGTCAAAGGCCATGCCATGTCTAGGGTCAG
 TACTGTAACCAAGTCTGAAGTCAAGGTTGTTGCTGTCATTGAGGCAAATATTAGTCTATGCCAAGTCA
 CATGATAAGGCCAATACTGGGTCCAGACCTGACAGAAGGGAAGAGACCAGCATTGGGATGAAATCCAGTG
 ATGAGGATGAAGAAAATATATGCTCCTGGTTCTGGACTGGAGAAGAGCCTAGTGTAGGGTCTGGTTCTG
 GCCTGAAGAAGAGACCTCTCTTCAAGTTTATAAGCCCCTACCTAAGATCCAGGAAAAGCCCAAGCCACA
 CACAAACCCACACTTACTATAAAAACAAAAGGTAATAGCATGGTCAAGGGCCAGGTATATTGCTCCTAGTTC
 CAGTTGAAGGAGGGGAGCAATCCTTGCCTCCAGAAGGAAACTGGACCCTGGTTGAGACCTTGATTGAAAC
 TCCTCTGGGGATTGACCTTTGACCAAGATCCCACCTTATCATGGGCCTTATTACCAGACCTTAGCTGAG
 ATCAAAAAACAGATTAGGCAAAGGGAAAAGTATGGGCCTAATCCGAAGGCCTGCCACTGCAATCACGTG
 GCTTTAGTTTAGAGCCTAAAGAGTTTGATAAACTTGTGGCCCTCCTTAAGTTAACTAAGGATCCTTTTAT
 TCGTAAATAGCTACAATGATAATGGGCATCAGTCTGCTTATCCATTTACTCAAGATATAATTCATGAT
 GTAGGTATTACTGTTATGATTGAAAACCTGGTCAATAATCCCAATGTTAAAGAACCACCCCTGGAGCTTTAA
 GTATGGTGGATGACAGCTCTGAGTCTCCGAAGAACCAAAATCAGGGGAGTCATATATACATCAAGTTTG
 TAAAGGCATAATCTCTTGCCCTTGAACCTCCCTGTGCAGCTGGCTGGACTGAAATTAAGGGCACTTG
 AGTATAAAATTTGAAGATCACTATGTGATTACCAGTTATATTCCAGATTTCTCACCTTGTTAAACAAGG
 GAAGTGTCAAACCAAGTTTTATGTTTTAAAAGTGTTCGTTTGTCTAAAAATCACGCCAATACAAG
 AGAATTGATCAGTGCCAAAGTACTGTCATCATTGGTTGCACCCTTAAACAAGAATGAGTCAAAGGCCAAT
 ATTCTTAATATTATTGAAATATTTGAGAATATAAATTTTCAGTTCAAACAAAGGCAAAGCTATTTACCA
 AGGAAAAGTTCACTAAATCTGAGCTTATTTCAATATTCCAGGAAGCAAACAGTTTGGTCAGAAACTCCA
 AGACTTAGCAGAGCACAGTGATCCCGAAGTGAGAGATAAAGTCATACGATTAATACTAAAACCT

ACGCGTACGCGGCCGCTCGAG – GFP Tag – GTTTAA

Protein Sequence:

>RG230273 representing NM_001168485
 Red=Cloning site Green=Tags(s)

MVDSGTEARARGKAEAGLQDGISGPATARVNGKTQAEAVAEAEELKTESVTAQAKAGDGAMTRTHTVYREA
 MAVTREVIVKVEDTTKTRVMVETKTKPLAERSIVPQTKSKAMPMSRVSTVTKSEVKVVAVIEANIRSYAKS
 HDKANTGSRPDRREETSIGMKSSDEEENICSWFWTGEEPSVGSWFWPEEETSLQVYKPLPKIQEKPKPT
 HKPTLTIKQKVIAWSRARIYVLVPEVGEQSLPPEGNWLVELIETPLGIRPLTKIPPYHGPYYQTLAE
 IKKQIRQREKYGNPKACHCKSRGFSLEPKFEDKLVALLLKTKDPFIHEIATMIMGISPAYPFTQDI IHD
 VGITVMIENLVNPNVKEHPGALSMVDDSSSESSEPKSGESYIHQVCKGIISCPVQLAGLKLGLHL
 SIKFEDHYVITSYIPDFLTLNKGSVKTKFYVLKVFSLSKNHANTRELISAKVLSLVAPFNKNESKAN
 ILNIIEIFENINFQFKTKAKLFTKEKFTKSELISIFQEAQFGQKLDLAEHSDPEVRDKVIRLILKL

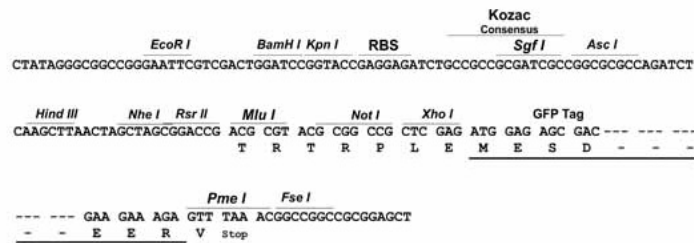
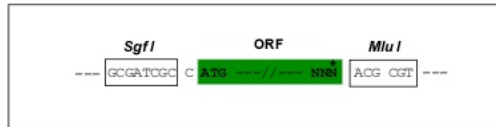
TRTRPLE – GFP Tag – V

Restriction Sites:

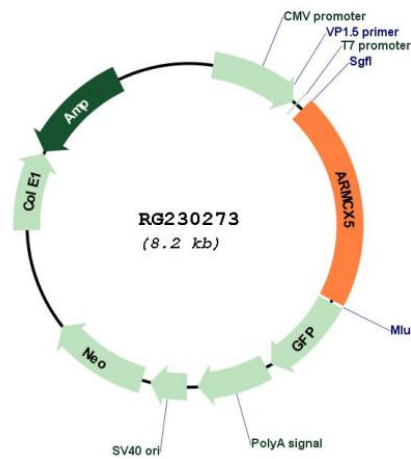
Sgfl-MluI

Cloning Scheme:

Cloning sites used for ORF Shutting:



Plasmid Map:



ACCN:	NM_001168485
ORF Size:	1674 bp
OTI Disclaimer:	The molecular sequence of this clone aligns with the gene accession number as a point of reference only. However, individual transcript sequences of the same gene can differ through naturally occurring variations (e.g. polymorphisms), each with its own valid existence. This clone is substantially in agreement with the reference, but a complete review of all prevailing variants is recommended prior to use. More info
OTI Annotation:	This clone was engineered to express the complete ORF with an expression tag. Expression varies depending on the nature of the gene.
Components:	The ORF clone is ion-exchange column purified and shipped in a 2D barcoded Matrix tube containing 10ug of transfection-ready, dried plasmid DNA (reconstitute with 100 ul of water).
Reconstitution Method:	<ol style="list-style-type: none">1. Centrifuge at 5,000xg for 5min.2. Carefully open the tube and add 100ul of sterile water to dissolve the DNA.3. Close the tube and incubate for 10 minutes at room temperature.4. Briefly vortex the tube and then do a quick spin (less than 5000xg) to concentrate the liquid at the bottom.5. Store the suspended plasmid at -20°C. The DNA is stable for at least one year from date of shipping when stored at -20°C.
RefSeq:	NM_001168485.2
RefSeq Size:	2805 bp
RefSeq ORF:	1677 bp
Locus ID:	64860
UniProt ID:	Q6P1M9
Cytogenetics:	Xq22.1