

Product datasheet for **RG230269**

GALNTL1 (GALNT16) (NM_001168368) Human Tagged ORF Clone

Product data:

Product Type:	Expression Plasmids
Product Name:	GALNTL1 (GALNT16) (NM_001168368) Human Tagged ORF Clone
Tag:	TurboGFP
Symbol:	GALNTL1
Synonyms:	GalNAc-T16; GALNACT16; GALNTL1
Mammalian Cell Selection:	Neomycin
Vector:	pCMV6-AC-GFP (PS100010)
E. coli Selection:	Ampicillin (100 ug/mL)



[View online »](#)

ORF Nucleotide Sequence:

>RG230269 representing NM_001168368
 Red=Cloning site Blue=ORF Green=Tags(s)

TTTTGTAATACGACTCACTATAGGGCGGCCGGAATTCGTCGACTGGATCCGGTACCGAGGAGATCTGCC
 GCC**CGGATCGCC**

ATGAGGAAGATCCGCGCCAATGCCATCGCCATCCTGACCGTAGCCTGGATCCTGGCACTTTCTACTACT
 TATGGCAGGACAACCGAGCCACGAGCATCCTCCGGCGGCCGGGCGCGCAGAGGGCAGGCAGGAGGTC
 GGAGCAGCTCCGCGAGGACCGCACCATCCCGCTCATTGTGACAGGAACTCCCTCGAAAGGCTTTGATGAG
 AAGGCCTACCTGTGCGCCAAGCAGCTGAAGGCTGGAGAGGACCCCTACAGACAGCACGCCTTCAACCAGC
 TGGAGAGTGACAAGCTGAGCCCAGACCGGCCATCCGGGACACCCGCCATTACAGCTGCCATCTGTGTC
 CTACTCCTCGGACCTGCCAGCCACCAGCGTCATCATCACCTTCCACAATGAGGCCGTTCCACCCTGCTG
 CGCACAGTGAAGAGTGTCTGAACCGAAGTCTGCCAAGTTCGATCCAGGAGATCATTTTAGTGGATGACT
 TCAGCTCAGATCCGGAAGACTGTCTACTCCTGACCAGGATCCCCAAGTCAAGTGCCTGCGCAATGATCG
 GCGGGAAGGGCTGATCCGGTCCCGAGTGGTGGGCGGACGTGGTGCAGCTACCGTTCTCACCTTTCTG
 GATAGCCACTGCGAAGTGAACCCGAGTGGCTGCCGCCATGCTGCAGCGGGTGAAGGAGGACCACACC
 CGGTGGTGAAGTCCATCATTGATGTCATCAGTCTGGATAATTTTGCCTACCTTGACGATCTGCTGACCT
 TCGTGGAGGGTTCGACTGGAGCCTGCATTTCAAGTGGGAGCAGATCCCTCTTGAGCAGAAGATGACCCGG
 ACAGACCCACCAGGCCATAAGGACGCCTGTCATAGCTGGAGGAATCTTCGTGATCGACAAGTCCCTGGT
 TTAACCACTTGGGAAAGTATGATGCCAGATGGACATCTGGGGGGGAGAGAATTTTGGAGCTCTCCTTCA
 GGTGTGGATGTGTGGTGGCAGTCTGGAGATCGTCCCTGCAGCCGGTGGGCCATGTCTTCAGGAAACGG
 CACCCCTACAACCTCCCTGAGGGTAATGCCCTCACCTACATCAGGAATACTAAGCGCACTGCAGAAGTGT
 GGATGGATGAATAACAAGCAATACTACTATGAGGCCCGGCCCTCGGCCATCGGGAAGGCCTTCGGCAGTGT
 GGCTACGCGGATAGAGCAGAGGAAGAAGATGAACTGCAAGTCTTCCGCTGGTACCTGGAGAACGCTAC
 CCAGAGCTCACGGTCCCGTGAAGGAAGCACTCCCGGCATCATTAAAGCAGGGGGTGAAGTCTTAGAAT
 CTCAGGGCCAGAACACAGCTGGTGAATCTGCTTGAATGGGGATCTGCAGAGGGTCTGCCAAGAACC
 GCAGCCCGCCAGGCATGGCTGTTCAAGTACCCTCATCCAGCAGCAGGGGAAGTGCCTGGCTGCCACC
 TCCACCTTAATGTCTCCCTGGATCCCGAGTCACTGCAGATGTGCAACCCTAGAGAAGGCAAGCAGA
 AATGGAGGAGAAAAGGATCTTTCATCCAGCATTAGTCAAGTGGCCTCTGCCTGGAGACAAAGCCTGCCCA
 GCTGGTGACCAGCAAGTGTGAGGCTGACGCCAGGCCAGCAGTGGCAGCTGTTGCCACACACA

ACGCGTACGCGGCCGCTCGAG - GFP Tag - GTTTAA

Protein Sequence:

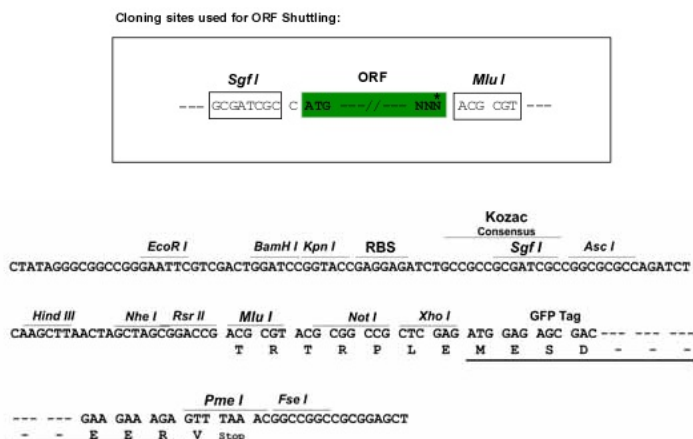
>RG230269 representing NM_001168368
 Red=Cloning site Green=Tags(s)

MRKIRANAIAILTVAWILGTFYYLWQDNRAHAASSGGRGAQRAGRRSEQLREDRTIPLIVTGTPSKGFDE
 KAYLSAKQLKAGEDPYRQHAFNQLKESDKLSPDRPIRDTRHYSCPSVSYSSDLPATSVIITFHNEARSTLL
 RTVKSVLNRPANLIQEIIILVDDFSSDPEDCLLLTRIPKVKCLRNDREGLIRSRVRGADVAAATVLTFL
 DSHCEVNTWLPMLQRVKEDHTRVSPIIDVISLDFAYLAASADLRGGFDWSLHFKWEQIPLEQKMR
 TDPTRPVIRTPVIAGGIFVIDKSWFNHLKGYDAQMDIWGGENFELSFRVWMCSSLEIVPCSRVGHVFRKR
 HPYNFPEGNALTIRNTRKTAEVWMDYKQYYEARPSAIGKAFGSVATRIEQRKKMNCKSFRWYLENVY
 PELTVPVKEALPGIIKQGVNCLSQGQNTAGDFLLGMGICRGSANPQPAQAWLFSDDL IQQGGKCLAAT
 STLMSPPGSPVILQMCNPREGKQKWRKGSFIQHSVSGLCLETKPAQLVTSKQADAQAQQWQLPHT

TRTRPLE - GFP Tag - V

Restriction Sites:

Sgfl-MluI

Cloning Scheme:


ACCN: NM_001168368

ORF Size: 1674 bp

OTI Disclaimer: The molecular sequence of this clone aligns with the gene accession number as a point of reference only. However, individual transcript sequences of the same gene can differ through naturally occurring variations (e.g. polymorphisms), each with its own valid existence. This clone is substantially in agreement with the reference, but a complete review of all prevailing variants is recommended prior to use. [More info](#)

OTI Annotation: This clone was engineered to express the complete ORF with an expression tag. Expression varies depending on the nature of the gene.

Components: The ORF clone is ion-exchange column purified and shipped in a 2D barcoded Matrix tube containing 10ug of transfection-ready, dried plasmid DNA (reconstitute with 100 ul of water).

Reconstitution Method:

1. Centrifuge at 5,000xg for 5min.
2. Carefully open the tube and add 100ul of sterile water to dissolve the DNA.
3. Close the tube and incubate for 10 minutes at room temperature.
4. Briefly vortex the tube and then do a quick spin (less than 5000xg) to concentrate the liquid at the bottom.
5. Store the suspended plasmid at -20°C. The DNA is stable for at least one year from date of shipping when stored at -20°C.

RefSeq: [NM_001168368.2](#)

RefSeq Size: 4309 bp

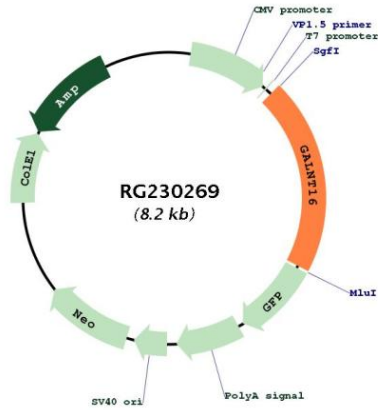
RefSeq ORF: 1677 bp

Locus ID: 57452

UniProt ID: [Q8N428](#)

Cytogenetics: 14q24.1
Protein Families: Transmembrane
Protein Pathways: Metabolic pathways, O-Glycan biosynthesis
Gene Summary: Catalyzes the initial reaction in O-linked oligosaccharide biosynthesis, the transfer of an N-acetyl-D-galactosamine residue to a serine or threonine residue on the protein receptor. [UniProtKB/Swiss-Prot Function]

Product images:



Circular map for RG230269