

Product datasheet for **RG230255**

ZNF548 (NM_001172773) Human Tagged ORF Clone

Product data:

Product Type:	Expression Plasmids
Product Name:	ZNF548 (NM_001172773) Human Tagged ORF Clone
Tag:	TurboGFP
Symbol:	ZNF548
Mammalian Cell Selection:	Neomycin
Vector:	pCMV6-AC-GFP (PS100010)
E. coli Selection:	Ampicillin (100 ug/mL)



[View online »](#)

ORF Nucleotide Sequence:

>RG230255 ORF sequence, **codon optimized**.
 Due to the complexity of NM_001172773, the ORF clone is codon optimized for mammalian Expression.
 The nucleotide sequence differs from the reference sequence, yet the amino acid sequence remains identical.

Red=Cloning site Blue=ORF Green=Tags(s)

TTTTGTAATACGACTCACTATAGGGCGGCCGGAATTCGTCGACTGGATCCGGTACCGAGGAGATCTGCC
 GCC**CGATCGCC**

ATGAACCTCACTGAGGGTCCGCTTGCCATGGCCGAGATGGATCCTACACAGGGTAGGGTGGTTTTCGAAG
 ATGTGGCCATCTATTTTTACAGGAAGAGTGGGGGCACCTTGACGAGGCACAGCGACTGCTGTATCGGGA
 CGTGATGCTCGAGAATTTGGCCCTCTGAGTTCTCTTGGGTCTGGCATGGGGCTGAAGATGAGGAGGCT
 CCTAGTCAACAAGTTTTTCTGTAGGAGTTCTGAGGTGACGGCCTCAAGCCATGCCTGTCATCTCAA
 AGGTGCATCCGTCTGAGACGTGTGGCCACCTTTGAAAGATATTTGTGTCTGGTGAACATAATGGGAT
 TCACCCCGAGCAGCACATCTATATTTGTGAAGCTGAGTTGTTTCAGCACCCGAAGCAGCAGATCGGTGAG
 AATCTGTCTCGCGGGGACGATTGGATCCAGTTTTGGTAAGAATCACCGGTTACATGGCCGAGGAAA
 TTTTACCTGTATGGAGGGTGAAGGACCTTCCAGCTACATCTTGCCTGCTCCAGCACCAGGGACCACA
 ATCAGAGTGAAGCCCTATCGGATACAGAGGATAGGGAAGCCTTCCAGACCGGCCAAAACGACTACAAG
 TGCTCTGAATGCGGCAAAACCTTACTTGCTCATACTCTTTCGTGAGCACCAGAAGATCCACACGGGG
 AGCGGTCTATGAGTGTAAACAAATGCGTAAATTTTTAAGTACTCCGCTAATTTTCATGAAGCACCAGAC
 TGTACACACATCTGAACGGACCTATGAGTGCCGGAATGCGGTAAGAGCTTCATGTATAATTACCGCCTC
 ATGAGACATAAGCGAGTCCACACCGGGGAGGCCATATGAGTGCAATACCTGTGGCAAATTCCTTCGAT
 ACAGTTCTACATTTGTGCGCCATCAAAGAGTGCATACGGGAGAGCGCCCTTACGAGTGTAGAGAATGCGG
 AAAGTTCTTTATGGATTCATCCACCTTGATTAAGCACCAGCGAGTGCACACAGGCGAACGGCCATACAAA
 TGCAATGACTGTGAAAGTTCTTTAGGTATATTTCTACGCTGATCAGGCACCAAAGAATTCACACCGCG
 AAAGCCCTTACGAGTGCAGCGTTTGTGGCGAAGTTCAGATATAACTCATCTTTGGTGAAGCACTGGCG
 CAACCATACCGCGAAAGACCTATAAATGCTCTGAGTGCAGCAAAGTTTCAGGTATCACTGTCGACTG
 ATCAGACACCAAAGAGTTCACACCGGTGAAAGGCCGACGAGTGCAGCGAGTGTGGTAAGTTTTTCAGAT
 ATAACCTAAACCTTATCAAACACTGGAGGAATCATACAGGGGAGAGGCCCTTATGAATGTCGCGAGTGTGG
 TAAAGCTTTTCAGCCACAAGCACATCCTCGTGGAGCACCAGAAGATCCACAGTGGAGAACGCCCTTATGAA
 TGTTCCGAGTGCCAGAAAGCCTTATTCGAAATCCCCTTGGTCCACCACCAGAAGATTCACTCCGAAG
 AAAGACTCGTATGTTCCATGAATGTAGGCAATAGCCTTGCCAAAACCTCAACTTCCCTGAACATCAGAGA
 TTCACCATGGAGAAGGTCTACCAT

ACGCGTACGCGGGCGCTCGAG – GFP Tag – GTTTAA

Protein Sequence:

>RG230255 representing NM_001172773
 Red=Cloning site Green=Tags(s)

MNLTEGPLAMAEMDPTQGRVVFEDVAIYFSQEEWGHLEAQRLLYRDVMLENLALLSSLGSHWGAEDDEEA
 PSQQGFSVGVSEVTASKPCLSSQKVHPSETCGPPLKDILCLVEHNGIHPEQHIYICEAELFQHPKQIGE
 NLSRGDDWIPSGKNHRVHMAEEIFTCMEGWKDLPATSCLLQHQPQSEWKPYRDTEDREAFQTGQNDYK
 CSECGKFTCSYSFVEHQIHTGERSYECNKCGKFFKYSANFMKHQTVHTSERTYECRECGKSFMYNYRL
 MRHKRVHTGERPYECNTCGKFFRYSSTFVRHQRVHTGERPYECRECGKFFMDSSTLIKHQRVHTGERPYK
 CNDGKFFRYISTLIRHQRIHTGERPYECVCGELFRYNSLVKHWNRHTGERPYKCECGKSFMYNYRL
 IRHQRVHTGERPYECSECGKFFRYNSLVKHWNRHTGERPYECRECGKAFSHKHILVEHQIHSGERPYE
 CSECGKAFIRKSHLVHHQKIHSEERLVCSMNVGNSLAKTPTSLNIRDFTMKVVYH

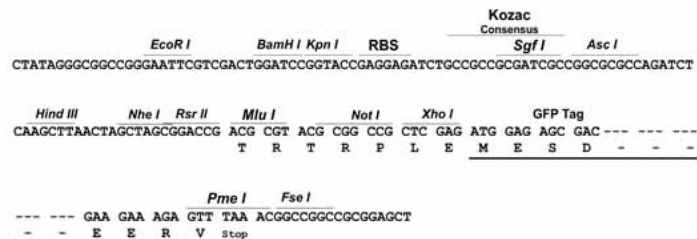
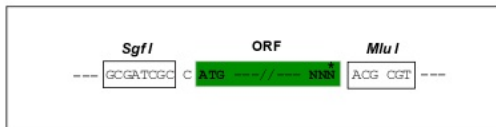
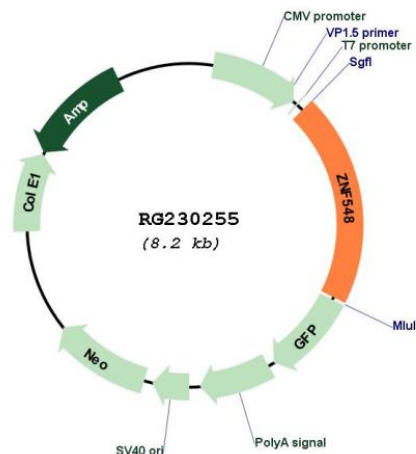
TRTRPLE – GFP Tag – V

Restriction Sites:

Sgfl-MluI

Cloning Scheme:

Cloning sites used for ORF Shutting:


Plasmid Map:

ACCN: NM_001172773

ORF Size: 1635 bp

OTI Disclaimer:	The molecular sequence of this clone aligns with the gene accession number as a point of reference only. However, individual transcript sequences of the same gene can differ through naturally occurring variations (e.g. polymorphisms), each with its own valid existence. This clone is substantially in agreement with the reference, but a complete review of all prevailing variants is recommended prior to use. More info
OTI Annotation:	This clone was engineered to express the complete ORF with an expression tag. Expression varies depending on the nature of the gene.
Components:	The ORF clone is ion-exchange column purified and shipped in a 2D barcoded Matrix tube containing 10ug of transfection-ready, dried plasmid DNA (reconstitute with 100 ul of water).
Reconstitution Method:	<ol style="list-style-type: none">1. Centrifuge at 5,000xg for 5min.2. Carefully open the tube and add 100ul of sterile water to dissolve the DNA.3. Close the tube and incubate for 10 minutes at room temperature.4. Briefly vortex the tube and then do a quick spin (less than 5000xg) to concentrate the liquid at the bottom.5. Store the suspended plasmid at -20°C. The DNA is stable for at least one year from date of shipping when stored at -20°C.
RefSeq:	NM_001172773.1 , NP_001166244.1
RefSeq Size:	4987 bp
RefSeq ORF:	1638 bp
Locus ID:	147694
UniProt ID:	Q8NEK5
Cytogenetics:	19q13.43
Protein Families:	Transcription Factors
Gene Summary:	May be involved in transcriptional regulation.[UniProtKB/Swiss-Prot Function]