

Product datasheet for **RG230250**

Asparagine synthetase (ASNS) (NM_001178075) Human Tagged ORF Clone

Product data:

Product Type:	Expression Plasmids
Product Name:	Asparagine synthetase (ASNS) (NM_001178075) Human Tagged ORF Clone
Tag:	TurboGFP
Symbol:	ASNS
Synonyms:	ASNSD; TS11
Mammalian Cell Selection:	Neomycin
Vector:	pCMV6-AC-GFP (PS100010)
E. coli Selection:	Ampicillin (100 ug/mL)



[View online »](#)

ORF Nucleotide Sequence:

>RG230250 representing NM_001178075
 Red=Cloning site Blue=ORF Green=Tags(s)

TTTTGTAATACGACTCACTATAGGGCGGCCGGAATTCGTCGACTGGATCCGGTACCGAGGAGATCTGCC
 GCC**CGCATCGCC**

ATGTGTGGCATTGGGCGCTGTTTGGCAGTGATGATTGCCTTTCTGTTTCAGTGTCTGAGTGCATGAAGA
 TTGCACACAGAGTCCAGATGCATTCCGTTTTGAGAATGTCAATGGATACACCAACTGCTGCTTTGGATT
 TCACCGGTTGGCGGTAGTTGACCCGCTGTTTGGAAATGCAGCCAATTCGAGTGAAGAAATATCCGATTTG
 TGGCTCTGTTACAATGGTAAATCTACAACCATAAGAAGATGCAACAGCATTGAAATTTGAATACCAGA
 CCAAAGTGGATGGTGAATAATCCTTCACTTTATGACAAAGGAGGAATTGAGCAAACAATTTGTATGTT
 GGATGGTGTGTTGCATTTGTTTTACTGGATACTGCCAATAAGAAAGTGTTCCTGGGTAGAGATACATAT
 GGAGTCAGACCTTTGTTAAAGCAATGACAGAAGATGGATTTTTGGCTGTATGTTCAGAAGCTAAAGGTC
 TTGTTACATTGAAGCACTCCGCGACTCCCTTTTTAAAAGTGGAGCCTTTCTTCTGGACACTATGAAGT
 TTTGGATTTAAAGCCAAATGGCAAAGTTCATCCGTGGAATGGTTAAATATCATCACTGTCGGGATGTA
 CCCTGCACGCCCTCTATGACAATGTGGAGAACTCTTTCCAGGTTTTGAGATAGAACTGTGAAGAACA
 ACCTCAGGATCCTTTTTAATAATGCTGTAAGAAACGTTTGATGACAGACAGAAGGATTGGCTGCCTTTT
 ATCAGGGGGCTTGGACTCCAGCTTGGTTGCTGCCACTCTGTTGAAGCAGCTGAAAGAAGCCCAAGTACAG
 TATCCTCTCCAGACATTTGCAATTGGCATGGAAGACAGCCCCGATTTACTGGCTGCTAGAAAGGTGGCAG
 ATCATATTGGAAGTGAACATTATGAAGTCTTTTTAACTCTGAGGAAGGCATTACGGCTCTGGATGAAGT
 CATATTTTCTTGGAACTTATGACATTACAACAGTTCGTGCTTCAGTAGGTATGATTTAATTTCCAAG
 TATATTCGGAAGAACACAGATAGCGTGGTATCTTCTCTGGAGAAGGATCAGATGAACTTACGCAGGGTT
 ACATATATTTTACAAGGCTCCTTCTCTGAAAAAGCCGAGGAGAGAGTGAAGGCTTCTGAGGGAAC
 CTATTTTGGTTGATGTTCTCCGCGCAGATCGAACTACTGCTGCCCATGGTCTTGAAGTGAAGTCCCATTT
 CTAGATCATCGATTTTCTTCTTACTTGTCTCTGCCACCAGAAATGAGAATTCCAAAGATGGGATAG
 AAAACATCTCCTGAGAGAGACGTTTGGAGATTCCAATCTGATACCCAAAGAGATTCTCTGGCGACCAAA
 AGAAGCCTTCAGTGATGGAATAACTTCAGTTAAGAATTCTGGTTTAAGATTTTACAGGAATACGTTGAA
 CATCAGGTTGATGATGCAATGATGGCAAATGCAGCCAGAAATTTCCCTTCAATACTCTAAAACCAAAG
 AAGGATATTACTACCGTCAAGTCTTTGAACGCCATTACCCAGGCCGGGCTGACTGGCTGAGCCATTACTG
 GATGCCAAAGTGATCAATGCCACTGACCCTTCTGCCCGCAGCTGACCCACTACAAGTCAGCTGTCAA
 GCT

ACGCGTACGCGGCCGCTCGAG - GFP Tag - GTTTAA

Protein Sequence:

>RG230250 representing NM_001178075
 Red=Cloning site Green=Tags(s)

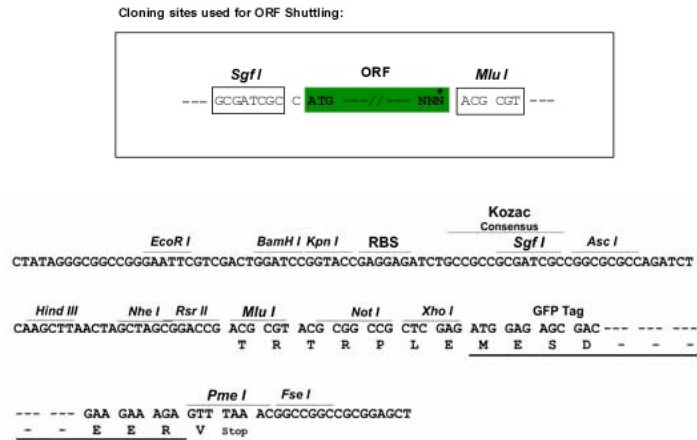
MCGIWFVSGDDCLSVQCLSAMKIAHRGPDAFRFENVNGYTNCCFGFHRLAVVDPLFGMQPIRVKYPYL
 WLCYNGEIYNHKKMQQHFEFYQTKVDGEIILHLYDKGGIEQTI CMLDGVFAFVLLDTANKKVFLGRD
 YGVRPLFKAMTEDGFLAVCSEAKGLVTLKHSATPFLKVEPFLPGHYEVLDLKPNGKVASVEMVKYHHCRD
 VPLHALYDNVEKLFPGFEIETVKNNLRILFNNAVKKRLMTRRIGCLL SGGLDSSLVAATLLKQLKEAQVQ
 YPLQTF AIGMEDSPDLLAARKVADHIGSEHYEVLFNSEEGIQALDEVIFSL ETYDITTVRASVGMYLISK
 YIRKNTDSVVIFSGEGSDEL TQYIYFHKAPSPEKAEESERLLRELYLFDVLRADRTTAAHGLELRV
 PFLDHRFSSYYLSLPPMIRIPKNGIEKHLRET FEDSNLIPKEILWRPKEAFSDGITSVKNSWFKILQ
 EYVEHQVDDAMMANAAQKFPFNTPKTEGYYRQVFERHYPRADWLSHYWMPKWINATDPSARTLTHYKSA
 VKA

TRTRPLE - GFP Tag - V

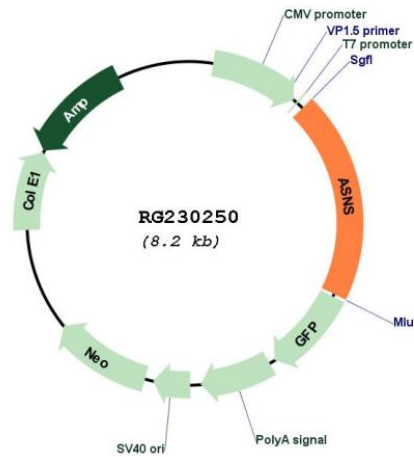
Restriction Sites:

Sgfl-MluI

Cloning Scheme:



Plasmid Map:



ACCN: NM_001178075

ORF Size: 1686 bp

OTI Disclaimer:	The molecular sequence of this clone aligns with the gene accession number as a point of reference only. However, individual transcript sequences of the same gene can differ through naturally occurring variations (e.g. polymorphisms), each with its own valid existence. This clone is substantially in agreement with the reference, but a complete review of all prevailing variants is recommended prior to use. More info
OTI Annotation:	This clone was engineered to express the complete ORF with an expression tag. Expression varies depending on the nature of the gene.
Components:	The ORF clone is ion-exchange column purified and shipped in a 2D barcoded Matrix tube containing 10ug of transfection-ready, dried plasmid DNA (reconstitute with 100 ul of water).
Reconstitution Method:	<ol style="list-style-type: none">1. Centrifuge at 5,000xg for 5min.2. Carefully open the tube and add 100ul of sterile water to dissolve the DNA.3. Close the tube and incubate for 10 minutes at room temperature.4. Briefly vortex the tube and then do a quick spin (less than 5000xg) to concentrate the liquid at the bottom.5. Store the suspended plasmid at -20°C. The DNA is stable for at least one year from date of shipping when stored at -20°C.
RefSeq:	NM_001178075.1 , NP_001171546.1
RefSeq Size:	2010 bp
RefSeq ORF:	1623 bp
Locus ID:	440
UniProt ID:	P08243
Cytogenetics:	7q21.3
Protein Families:	Druggable Genome
Protein Pathways:	Alanine, aspartate and glutamate metabolism, Metabolic pathways, Nitrogen metabolism
Gene Summary:	The protein encoded by this gene is involved in the synthesis of asparagine. This gene complements a mutation in the temperature-sensitive hamster mutant ts11, which blocks progression through the G1 phase of the cell cycle at nonpermissive temperature. Alternatively spliced transcript variants have been described for this gene. [provided by RefSeq, May 2010]