

## Product datasheet for **RG230233**

### MEPE (NM\_001184694) Human Tagged ORF Clone

#### Product data:

Product Type:	Expression Plasmids
Product Name:	MEPE (NM_001184694) Human Tagged ORF Clone
Tag:	TurboGFP
Symbol:	MEPE
Synonyms:	OF45
Mammalian Cell Selection:	Neomycin
Vector:	pCMV6-AC-GFP (PS100010)
E. coli Selection:	Ampicillin (100 ug/mL)



[View online »](#)

**ORF Nucleotide Sequence:**

>RG230233 representing NM\_001184694  
 Red=Cloning site Blue=ORF Green=Tags(s)

TTTTGTAATACGACTCACTATAGGGCGGCCGGGAATTCGTCGACTGGATCCGGTACCGAGGAGATCTGCC  
 GCC**CGCATCGCC**

ATGCGAGTTTTCTGTGTGGGACTACTCCTTTTCAGTGTGACCTGGGCAGCACCAACATTTCAACCACAGA  
 CTGAGAAAATAAGCAAAGCTGTGTGGAAGAGCAGAGGCAGGAAGAAAAAACAAGACAATATTGGTTT  
 TCACCATTGGGCAAGAGAATAAATCAAGAGCTATCATCTAAAGAAAATATTGTCCAGGAAAGAAAGAAA  
 GATTTGTCCCTTTCTGAAGCCAGTGAGAATAAGGGAAGTAGTAAATCTCAAAATTTTCACAAATAGAC  
 AGAGACTGAATAAAGAATATAGTATCAGTAACAAAGAGAATACTCACAATGGCCTGAGGATGTCAATTTA  
 TCCTAAGTCAACTGGGAATAAAGGGTTTGAGGATGGAGATGATGCTATCAGCAAACACATGACCAAGAA  
 GAATATGGCGCAGCTCTCATCAGAAATAACATGCAACATATAATGGGGCCAGTGACTGCGATTAACCTCC  
 TGGGGGAAGAAAACAAGAGAACACACCTAGGAATGTTCTAAACATAATCCAGCAAGTATGAATTATGC  
 TAAAGCACACTCGAAGGATAAAAAGAAGCCTCAAAGAGATTCCCAAGCCAGAAAAGTCCAGTAAAAAGC  
 AAAAGCACCCATCGTATTCAACACAACATTGACTACCTAAAACATCTCTCAAAAGTCAAAAAAATCCCCA  
 GTGATTTTGAAGGCAGCGGTTATACAGATCTTCAAGAGAGAGGGGACAATGATATATCTCCTTTTCAGTGG  
 GGACGGCCAACCTTTTAAGGACATTCTGGTAAAGGAGAAGCTACTGGTCTGACCTAGAAGGCAAAGAT  
 ATTCAAACAGGGTTTGCAGGCCAAGTGAAGCTGAGAGTACTCATCTTGACACAAAAAGCCAGGTTATA  
 ATGAGATCCCAGAGAGAGAAGAAAATGGTGAAAATACCATTGGAAGTGGGATGAACTGCGAAAGAGGC  
 AGATGCTGTTGATGTCAGCCTTGTAGAGGGCAGCAACGATATCATGGGTAGTACCAATTTTAAGGAGCTC  
 CCTGGAAGAGAAGGAAACAGAGTGGATGCTGGCAGCCAAAATGCTCACCAGGGAAGGTTGAGTTTCATT  
 ACCCTCTGCACCCTCAAAGAGAAAAGAAAAGGCAAGTGTGATGTCAGCTGAAAGTACCAACTATAA  
 TGAATTCCTAAAAATGGCAAAGGCAGTACCAGAAAGGGTGTAGATCATTCTAATAGGAACCAAGCAACC  
 TTAATGAAAAACAAGGTTTCTAGTAAGGGCAAAGTCAAGGGCCTGCCATTCTCTCGTGGTCTTG  
 ATAATGAAATCAAAAACGAAATGGATTCTTTAATGGCCCAAGTCATGAGAATATAATAACACATGGCAG  
 AAAATATCATTATGTACCCACAGACAAAATAATTCTACAGGAATAAGGGTATGCCACAAGGGAAGGC  
 TCCTGGGGTAGACAACCCATTCCAACAGGAGTTTAGTTCCTGTAAGGGATGACAGTGTGAGTCAT  
 CTGACAGTGGCAGTTCAAGTGAGAGCGATGGTGAC

**ACGCGTACGCGGCCGCTCGAG** - GFP Tag - GTTTAA

**Protein Sequence:**

>RG230233 representing NM\_001184694  
 Red=Cloning site Green=Tags(s)

MRVFCVGLLLFSVTWAAPTFFQPQTEKTKQSCVEEQRQEEKNKDNIGFHHLGKRINQELSSKENIVQERKK  
 DLSSLSEASENKGSKSQNYFTNRQRLNKEYSISNKENTHNLRLMSIYPKSTGNKGFEDGDDAISLKHLDQE  
 EYGAALIRNNMQHIMGPVTAIKLLGEENKENTPRNVLNIIPASMNYAKAHSKDKKKPQRDSQAQKSPVKS  
 KSTHRIQHNIDYLKHLKSKVKKIPSDFEFSGYDLQERGDNDISPFSGDQPFKDIIPGKGEATGPDLEGKD  
 IQTGFAFPSEAESTHLDTKKPGYNEIPEREENGNTIGTRDETAKEADAVDVSLEGSNDIMGSTNFKEL  
 PGREGNRVDAGSQNAHQKVEFHYPAPSKEKRKEGSSDAESTNYNEIPKNGKSTRKGVGDHSNRNQAT  
 LNEKQRFPSKGSQGLPIPSRGLDNEIKNEMDSFNPSHENIITHGRKYHYVPHRQNNSTRNKGMPQKGG  
 SWGRQPHSNRRFSSRRRDDSSSSDSGSSSESDDG

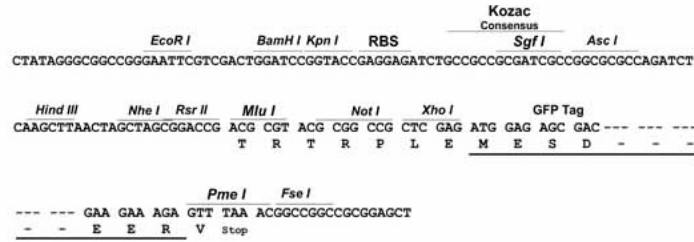
**TRTRPLE** - GFP Tag - V

**Restriction Sites:**

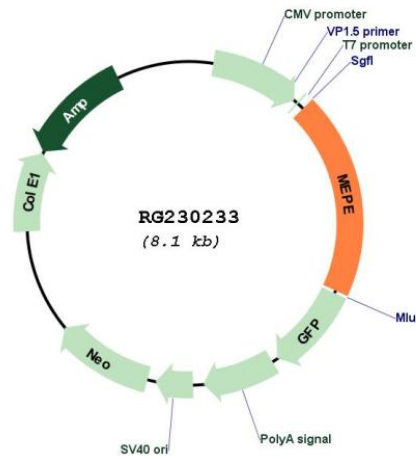
Sgfl-Mlul

Cloning Scheme:

Cloning sites used for ORF Shutting:



Plasmid Map:



<b>ACCN:</b>	NM_001184694
<b>ORF Size:</b>	1575 bp
<b>OTI Disclaimer:</b>	<p>Due to the inherent nature of this plasmid, standard methods to replicate additional amounts of DNA in E. coli are highly likely to result in mutations and/or rearrangements. Therefore, OriGene does not guarantee the capability to replicate this plasmid DNA. Additional amounts of DNA can be purchased from OriGene with batch-specific, full-sequence verification at a reduced cost. Please contact our customer care team at <a href="mailto:custsupport@origene.com">custsupport@origene.com</a> or by calling 301.340.3188 option 3 for pricing and delivery.</p> <p>The molecular sequence of this clone aligns with the gene accession number as a point of reference only. However, individual transcript sequences of the same gene can differ through naturally occurring variations (e.g. polymorphisms), each with its own valid existence. This clone is substantially in agreement with the reference, but a complete review of all prevailing variants is recommended prior to use. <a href="#">More info</a></p>
<b>OTI Annotation:</b>	This clone was engineered to express the complete ORF with an expression tag. Expression varies depending on the nature of the gene.
<b>Components:</b>	The ORF clone is ion-exchange column purified and shipped in a 2D barcoded Matrix tube containing 10ug of transfection-ready, dried plasmid DNA (reconstitute with 100 ul of water).
<b>Reconstitution Method:</b>	<ol style="list-style-type: none"><li>1. Centrifuge at 5,000xg for 5min.</li><li>2. Carefully open the tube and add 100ul of sterile water to dissolve the DNA.</li><li>3. Close the tube and incubate for 10 minutes at room temperature.</li><li>4. Briefly vortex the tube and then do a quick spin (less than 5000xg) to concentrate the liquid at the bottom.</li><li>5. Store the suspended plasmid at -20°C. The DNA is stable for at least one year from date of shipping when stored at -20°C.</li></ol>
<b>RefSeq:</b>	<a href="#">NM_001184694.2</a>
<b>RefSeq Size:</b>	2022 bp
<b>RefSeq ORF:</b>	1578 bp
<b>Locus ID:</b>	56955
<b>UniProt ID:</b>	<a href="#">Q9NQ76</a>
<b>Cytogenetics:</b>	4q22.1
<b>Protein Families:</b>	Secreted Protein
<b>Gene Summary:</b>	<p>This gene encodes a secreted calcium-binding phosphoprotein that belongs to the small integrin-binding ligand, N-linked glycoprotein (SIBLING) family of proteins. Members of this family are components of the extracellular matrix of bone and dentin and regulate bone mineralization. Deficiency of a similar protein in mouse results in increased bone mass. Mice lacking this gene are resistant to aging-related trabecular bone loss. Alternative splicing results in multiple transcript variants. [provided by RefSeq, Mar 2014]</p>