

Product datasheet for **RG230205**

DGCR2 (NM_001173533) Human Tagged ORF Clone

Product data:

Product Type:	Expression Plasmids
Product Name:	DGCR2 (NM_001173533) Human Tagged ORF Clone
Tag:	TurboGFP
Symbol:	DGCR2
Synonyms:	DGS-C; IDD; LAN; SEZ-12
Mammalian Cell Selection:	Neomycin
Vector:	pCMV6-AC-GFP (PS100010)
E. coli Selection:	Ampicillin (100 ug/mL)



[View online »](#)

ORF Nucleotide Sequence:

>RG230205 representing NM_001173533
 Red=Cloning site Blue=ORF Green=Tags(s)

TTTTGTAATACGACTCACTATAGGGCGGCCGGAATTCGTCGACTGGATCCGGTACCGAGGAGATCTGCC
 GCC**CGGATCGCC**

ATGGTGCCCAAGGCAGACAGCGGCCCTTCTGCTGCTCTTCTGCTCGTCTACTGTACCGAGCCG
 TCGCGCCAGAAGTGACCGGGGAGGTGCGTCTCATCATGGGAAGGAGGCTGTGGATCCGCGCAGGGGCG
 GGCCAGAGGAGGCGACCTTCGCACTTCCACGCGTGAACGTGGCGCAGCCCGTTTCGCTTCAAGTTTC
 CTAGGGAAGTGCCCGACAGGGTGGCACCCTACGAAGGCAGGCCAGCTGCTACCGGGTCTACCTGAGCG
 GGGAGAAGTACTGGGATGCCGCGCAGACCTGCCAGCGCTGAATGGCTCTCTCGCCACCTTCTCCACTGA
 CCAGGAGCTGCGCTTGTCTGGCCAGGAATGGGACCAGCCGAGCGGAGCTTTGGTTGGAAGGACCAG
 CGCAAGTTGTGGTTGGCTATCAGTATGTTATCACTGGCCGGAACCGCTCCTTGAAGGTCGCTGGGAGG
 TGGCATTCAAAGGCTCTCAGAGGTGTTCTGCCCCAGACCCCATCTTGCCTCGGCCATGTCTGAGAA
 CGACAACGTGTTCTGTGCCAGCTTCAGTGCTTCCATTTCCACCCCTGCGGCACCACGACTCCACAGC
 TGGCAGCCGAGAGCTGCTACGAGAAGTCTTATTCTGTGTAAGAAGTCAAACATGTGTTGACATCA
 AGGACAACGTGGTGGATGAAGGGTCTACTTCACCCCTAAGGGGGACGACCCATGCCTGAGCTGCACCTG
 CCATGGAGGGGAGCTGAGATGTGTGTGGCTGCTCTGTGAGAGGCCAGGGCTGCCAACAGTACCGC
 AAGGACCCCAAAGAGTGTGCAAGTTATGTGTCTGGACCCAGATGGCAACAGTCTGTTTACTCCATGG
 CCAGCGGGATGCGCCTGGTGTGTCAGTGCATCTCTCTCTCTCATCTGTCACTGCTGCTTTCATGGT
 CCACCGGCTGCGCCAGCGCGCCGGGAGCGCATCGAGTCCCTGATTGGAGCAAATTGCACCACTTCAAC
 CTGGCCCGCAGGATCCCTGGCTTTGATTACGCCCCAGACGGGTTGGCACGGGCCACGCGGCTGCATC
 TTTCTGACGACGGAGAGGGTGGACTTTCCATTTCCACGACCCCTCCATCCCTACACGGCATAAAGT
 CCGGACATCGGCCAGCCGACGACCCCTCGCCGCCCTACGAGGCTCCATCCACCCGGACAGTGTGTTT
 TATGACCTGCAGACGATGATGCTTTTGTGAGCTGTGGAGGTCAGCCTGCCAGCCCTGGGATGGTGGGA
 GTGAAGGTGCATTACTCCGGCGCCTGGAGCAGCCTTGCCTACTGCGGGGGCCTCTCTGGCAGACCTGGA
 AGACTCTGCCGACAGCAGCAGCGCCCTGCTCGTCCCCCTGACCTGCCAGAGCGGGAGACCCAGCT
 GCAGAGGCACTGCCAGGGGTGGCCGCCACAGCCGACGCTCCCTCAATACTGTGGTG

ACGCGTACGCGGCCGCTCGAG – GFP Tag – GTTTAA

Protein Sequence:

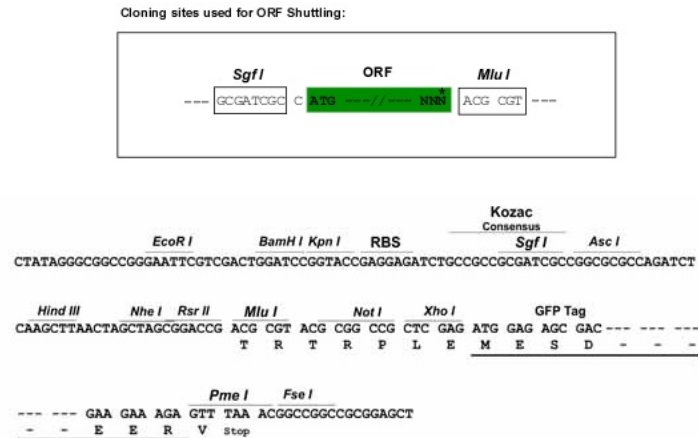
>RG230205 representing NM_001173533
 Red=Cloning site Green=Tags(s)

MVPKADSGAFLLFLVLTVEPLRPEVTGEVRPHHGKEAVDPRQGRARGDPSHFHAVNVAQPVRFSF
 LGKCPTGWHHYEGTASCYRVYLSGENYWDAAQTCQRLNGSLATFSTDQELRFVLAQEWDPERSFGWKDQ
 RKLWVGYYVITGRNRSLEGRWEVAFKGSSEVFLPPDPIFASAMSENDNVFCAQLQCFHFPTLRHHDLHS
 WHAESCYEKSSFLLCKRSQTCVDIKDNVDEGFYTPKGDDPCLCTCHGGEPEMCVAALCERPQGCQYR
 KDPKECKFMCLDPDGNLFDMSASGMRLVVSICSSFLILSLLLFMVHRLRQRRRERIESLIGANLHHFN
 LGRRIPGFDYGPDPFGTGLTPLHLSDDGEGTFFHFDPPPPYAYKYPDIGQPDPPPPYEASIHPSVF
 YDPADDDAFEPVEVSLPAPGDGGSEGALLRRLEQLPTAGASLADLEDSADSSSALLVPPDPAQSGSTPA
 AEALPGGGRHSRSSLNTVV

TRTRPLE – GFP Tag – V

Restriction Sites:

Sgfl-Mlul

Cloning Scheme:


ACCN: NM_001173533

ORF Size: 1527 bp

OTI Disclaimer: The molecular sequence of this clone aligns with the gene accession number as a point of reference only. However, individual transcript sequences of the same gene can differ through naturally occurring variations (e.g. polymorphisms), each with its own valid existence. This clone is substantially in agreement with the reference, but a complete review of all prevailing variants is recommended prior to use. [More info](#)

OTI Annotation: This clone was engineered to express the complete ORF with an expression tag. Expression varies depending on the nature of the gene.

Components: The ORF clone is ion-exchange column purified and shipped in a 2D barcoded Matrix tube containing 10ug of transfection-ready, dried plasmid DNA (reconstitute with 100 ul of water).

Reconstitution Method:

1. Centrifuge at 5,000xg for 5min.
2. Carefully open the tube and add 100ul of sterile water to dissolve the DNA.
3. Close the tube and incubate for 10 minutes at room temperature.
4. Briefly vortex the tube and then do a quick spin (less than 5000xg) to concentrate the liquid at the bottom.
5. Store the suspended plasmid at -20°C. The DNA is stable for at least one year from date of shipping when stored at -20°C.

RefSeq: [NM_001173533.1](#), [NP_001167004.1](#)

RefSeq Size: 4381 bp

RefSeq ORF: 1530 bp

Locus ID: 9993

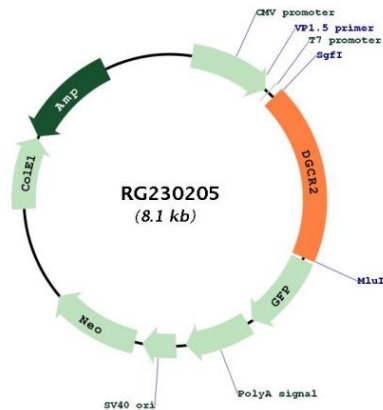
UniProt ID: [P98153](#)

Cytogenetics: 22q11.21

Protein Families: Druggable Genome, Transmembrane

Gene Summary: Deletions of the 22q11.2 have been associated with a wide range of developmental defects (notably DiGeorge syndrome, velocardiofacial syndrome, conotruncal anomaly face syndrome and isolated conotruncal cardiac defects) classified under the acronym CATCH 22. The DGCR2 gene encodes a novel putative adhesion receptor protein, which could play a role in neural crest cells migration, a process which has been proposed to be altered in DiGeorge syndrome. Alternative splicing results in multiple transcript variants.[provided by RefSeq, May 2010]

Product images:



Circular map for RG230205