

## Product datasheet for **RG230185**

### CP2c (TFCP2) (NM\_001173452) Human Tagged ORF Clone

#### Product data:

Product Type:	Expression Plasmids
Product Name:	CP2c (TFCP2) (NM_001173452) Human Tagged ORF Clone
Tag:	TurboGFP
Symbol:	TFCP2
Synonyms:	LBP1C; LSF; LSF1D; SEF; TFCP2C
Mammalian Cell Selection:	Neomycin
Vector:	pCMV6-AC-GFP (PS100010)
E. coli Selection:	Ampicillin (100 ug/mL)



[View online »](#)

**ORF Nucleotide Sequence:**

>RG230185 representing NM\_001173452  
 Red=Cloning site Blue=ORF Green=Tags(s)

TTTTGTAATACGACTCACTATAGGGCGGCCGGGAATTCGTCGACTGGATCCGGTACCGAGGAGATCTGCC  
 GCC**CGGATCGCC**

ATGGCCTGGGCTCTGAAGCTGCCTCTGGCCGACGAAGTATTGAATCCGGTTGGTGCAGGACTTTGATG  
 CTAGCCTGTCGGGATCGGCCAGGAAGTGGTGCCTATAGCATGAGTGATGTCCTTGCATTGCC  
 CATTTTTAAGCAAGAAGAGTTCGAGTTTGCCCTCTGATAATGAGAATAAAATCCTGCCTTTTCAATATGTG  
 CTTTGTGCTGCTACCTCTCCAGCAGTGAAGTCCATGATGAAACCCTAACGTATCTCAATCAAGGACAGT  
 CTTATGAAATTCGAATGCTAGACAATAGGAACTTGGAGAAGTCCAGAAATTAATGGCAAATTTGGTAA  
 GAGTATATTCCGTGTGGTGTCCATGACAGAAGGCTTCAGTACACTGAGCATCAGCAGCTAGAGGGCTGG  
 AGGTGGAACCGACCTGGAGACAGAATTCCTGACATAGATATCCCGATGTCTGTGGGTATAATCGATCCTA  
 GGGCTAATCCAACCACTAAATACAGTGGAGTTCCTGTGGGACCCTGCAAAGAGGACATCTGTGTTTAT  
 TCAGGTGCACTGTATTAGCACAGAGTTCCTATGAGGAAACATGGTGGAGAAAAGGGGTGCCATCCGA  
 GTACAAATAGATACCTTCAAGGAGAATGAAAACGGGGAATATACTGAGCACTTACTCGGCCAGCTGCC  
 AGATCAAAGTTTTCAAGCCAAAGGTGCAGACAGAAAGCAAAAAACGGATAGGGAATAATGGAGAAACG  
 AACACCTCATGAAAAGGAGAAATATCAGCCTTCTATGAGACAACCATACTCACAGAGTGTCTCCATGG  
 CCCGAGATCACGTATGTCAAACTCCCATCACCTGGCTTCAACAGTTCATAGCAGTTCCTTCTCTTG  
 GGAAGGAAATGGTTCACCAAACCAGCCAGAGCCACCCCTCCAGTCACAGATAACCTTACCAAC  
 AACCACACCTCAGGAAGCTCAGCAGTGGTTCATCGAAATCGTTTTTCTACATTCACAAGGCTTTTACA  
 AACTTCTCAGGGCAGATTTATTGAAATTAAGTATGATGTGATCCAATCTGTGGCCCTGCAGATG  
 GAATCAGACTTTTTAATGCATTAAGGCGGATGGTGGTCCAAGGTTAACATTTATGTTTGCAGGA  
 ATCACTGCAGTTGAGGGAGCAGCAACAACAGCAGCAACAGCAGCAGAGAAGCATGAGGATGGAGACTCA  
 AATGGTACTTTCTCGTTTACCATGCTATCTATCTAGAAGAACTAACAGCTGTTGAATTGACAGAAAAA  
 TTGCTCAGCTTTTTCAGCATTTCCCTTGCAGATCAGCCAGATTTACAAGCAGGGGCCAACAGGAATTCA  
 TGTGCTCATCAGTATGAGATGATACAGAACTTTCAGGAAGAAGCATGTTTTATTCTGGACACAATGAAA  
 GAAACCAATGATAGCTATCATATCATACTGAAG

**ACGCGTACGCGGCCGCTCGAG** - GFP Tag - GTTTAA

**Protein Sequence:**

>RG230185 representing NM\_001173452  
 Red=Cloning site Green=Tags(s)

MAWALKLPLADEVIESGLVQDFDASLSGIGQELGAGAYSMSDVLALPIFKQEESLPPDNENKILPFQYV  
 LCAATSPAVKLHDETLTYLNQGSYEIRMLDNRKLGELPEINGKLVKSI FRVVFHRRRLQYTEHQLEGW  
 RWNRPGRILDIDIPMSVGIIDPRANPTQLNTVEFLWDPKRTSVFIQVHCISTEFMRKHGGEKGVVFR  
 VQIDTFKENENGEYTEHLHSASCQIKVFKPKGADRKQKTDREKMEKRTPEHEKEYQPSYETTILTECSPW  
 PEITYVNNSPSPGFNSSHSSFLGEGNGSPNHQPEPPPVTDNLLPTTTPQEAQQWLHRNRFSTFTRLFT  
 NFGSADLLKLTRDDVIQICGPADGIRLFNALKGRMVRPRLTIYVCQESLQLREQQQQQQQKHEDGDS  
 NGTFFVYHAIYLEELTAVELTEKIAQLFSISPCQISQIYKQGPTGIHVLISDEMIQNFQEEACFILD  
 TMK  
 ETNDSYHIILK

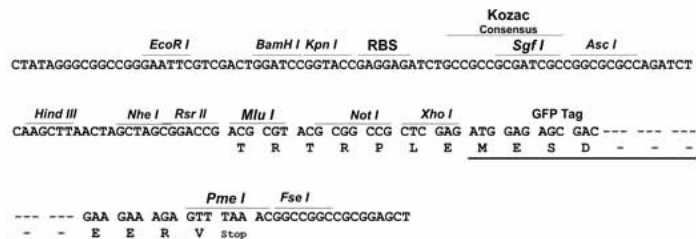
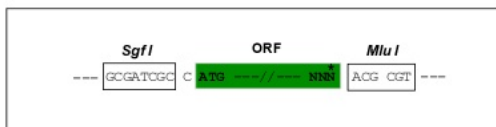
**TRTRPLE** - GFP Tag - V

**Restriction Sites:**

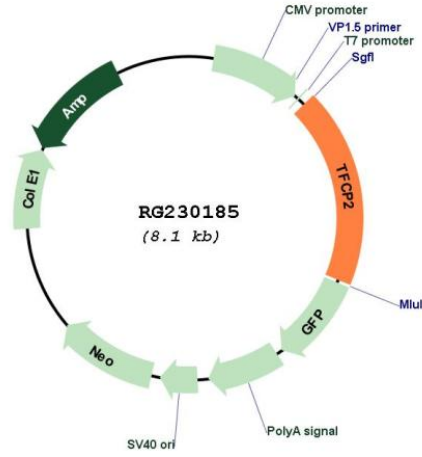
Sgfl-MluI

Cloning Scheme:

Cloning sites used for ORF Shutting:



Plasmid Map:



ACCN: NM\_001173452

ORF Size: 1503 bp

<b>OTI Disclaimer:</b>	<p>Due to the inherent nature of this plasmid, standard methods to replicate additional amounts of DNA in E. coli are highly likely to result in mutations and/or rearrangements. Therefore, OriGene does not guarantee the capability to replicate this plasmid DNA. Additional amounts of DNA can be purchased from OriGene with batch-specific, full-sequence verification at a reduced cost. Please contact our customer care team at <a href="mailto:custsupport@origene.com">custsupport@origene.com</a> or by calling 301.340.3188 option 3 for pricing and delivery.</p> <p>The molecular sequence of this clone aligns with the gene accession number as a point of reference only. However, individual transcript sequences of the same gene can differ through naturally occurring variations (e.g. polymorphisms), each with its own valid existence. This clone is substantially in agreement with the reference, but a complete review of all prevailing variants is recommended prior to use. <a href="#">More info</a></p>
<b>OTI Annotation:</b>	<p>This clone was engineered to express the complete ORF with an expression tag. Expression varies depending on the nature of the gene.</p>
<b>Components:</b>	<p>The ORF clone is ion-exchange column purified and shipped in a 2D barcoded Matrix tube containing 10ug of transfection-ready, dried plasmid DNA (reconstitute with 100 ul of water).</p>
<b>Reconstitution Method:</b>	<ol style="list-style-type: none"><li>1. Centrifuge at 5,000xg for 5min.</li><li>2. Carefully open the tube and add 100ul of sterile water to dissolve the DNA.</li><li>3. Close the tube and incubate for 10 minutes at room temperature.</li><li>4. Briefly vortex the tube and then do a quick spin (less than 5000xg) to concentrate the liquid at the bottom.</li><li>5. Store the suspended plasmid at -20°C. The DNA is stable for at least one year from date of shipping when stored at -20°C.</li></ol>
<b>RefSeq:</b>	<a href="#">NM_001173452.2</a>
<b>RefSeq Size:</b>	3712 bp
<b>RefSeq ORF:</b>	1506 bp
<b>Locus ID:</b>	7024
<b>UniProt ID:</b>	<a href="#">Q12800</a>
<b>Cytogenetics:</b>	12q13.12-q13.13
<b>Protein Families:</b>	Transcription Factors
<b>Gene Summary:</b>	<p>This gene encodes a transcription factor that binds the alpha-globin promoter and activates transcription of the alpha-globin gene. The encoded protein regulates erythroid gene expression, plays a role in the transcriptional switch of globin gene promoters, and it activates many other cellular and viral gene promoters. The gene product interacts with certain inflammatory response factors, and polymorphisms of this gene may be involved in the pathogenesis of Alzheimer's disease. [provided by RefSeq, Mar 2010]</p>