

Product datasheet for **RG230178**

MEF2A (NM_001171894) Human Tagged ORF Clone

Product data:

Product Type:	Expression Plasmids
Product Name:	MEF2A (NM_001171894) Human Tagged ORF Clone
Tag:	TurboGFP
Symbol:	MEF2A
Synonyms:	ADCAD1; mef2; RSRFC4; RSRFC9
Mammalian Cell Selection:	Neomycin
Vector:	pCMV6-AC-GFP (PS100010)
E. coli Selection:	Ampicillin (100 ug/mL)



[View online »](#)

ORF Nucleotide Sequence:

>RG230178 representing NM_001171894
 Red=Cloning site Blue=ORF Green=Tags(s)

TTTTGTAATACGACTCACTATAGGGCGGCCGGGAATTCGTCGACTGGATCCGGTACCGAGGAGATCTGCC
 GCC**CGGATCGCC**

ATGGGGCGGAAGAAAATACAAATCACACGCATAATGGATGAAAGGAACCGACAGGTCACTTTTACAAGA
 GAAAGTTTGGATTAATGAAGAAAGCCTATGAACCTAGTGTCTGTGACTGTGAAATAGCACTCATCAT
 TTTCAACAGCTCTAACAACTGTTTCAATATGCTAGCACTGATATGGACAAAGTTCTTCTCAAGTATA
 GAATATAATGAACCTCATGAAAGCAGAACCACTCGGATATTGTTGAGACTTTAAGAAAGAAAGGCCTTA
 ATGGTTGTGAGAGCCCTGATGCTGACGATTACTTTGAGCACAGTCCACTCTCGGAGGACAGATTAGCAA
 ACTAAATGAAGATAGTGATTTTATTTTCAAACGAGGCCCTCTGGTCTGCCACCTCAGAACTTTTCAATG
 TCTGTCACAGTTCAGTGACCAGCCCAATGCTTTGCTTACACTAACCCAGGGAGTTCACTGGTGTCCC
 CATCTTTGGCAGCCAGCTCAACGTTAACAGATTCAAGCATGCTCTCTCCACCTCAAACCACATTACATAG
 AAATGTGTCTCCTGGAGCTCCTCAGAGACCACCAAGTACTGGCAATGCAGGTGGGATGTTGAGCACTACA
 GACCTCACAGTGCCAAATGGAGCTGGAAGCAGTCCAGTGGGGAATGGATTGTAAACTCAAGAGCTTCTC
 CAAATTTGATTGGAGCTACTGGTGCAAATAGCTTAGGCAAAGTCATGCCTACAAAGTCTCCCCCTCCACC
 AGGTGGTGGTAATCTTGAATGAACAGTAGGAAACCAGATCTTCGAGTTGTATCCCCCTTCAAGCAAG
 GGCATGATGCCTCCACTAAATACCCAAAGGATCAGTAGTTCTCAAGCCACTCAACCTCTTGTACCCCGAG
 TCGTGTCTGTGACAACCCCAAGCTTGCCTCCGCAAGGACTTGTGTACTCAGCAATGCCGACTGCCTACAA
 CACTGATTATCACTGACCAGCGCTGACCTGTGAGCCCTCAAGGCTTCAACTCGCCAGGAATGCTGTGCG
 CTGGGACAGGTGTGGCCTGGCAGCAGCACCCACTAGGACAAGCAGCCCTCAGCTCTCTTGTGCTGGAG
 GGCAGTTATCTCAGGGTTCCAATTTATCCATTAATACCAACAAAACATCAGCATCAAGTCCGAACCGGAT
 TTCACCTCCTCGGATCGTATGACCCCATCGGGCTTCCAGCAGCAGCAGCAGCAGCAGCAGCAGCAGCAG
 CCGCCGCCACCACCGCAGCCCGCCAGCCACAAACCCCGCAGCCCGCAGCCCGACAGGAAATGGGGCGCTCCC
 CTGTGGACAGTCTGAGCAGCTCTAGTAGCTCTATGATGGCAGTGATCGGGAGGATCCACGGGGCGACTT
 CCATTCTCCAATTGTGCTTGGCCGACCCCAAACTGAGGACAGAGAAAGCCCTTCTGTAAGCGAATG
 AGGATGGACGCGTGGGTGACC

AG**CGGACCG**ACGCGTACGCGGCCGCTCGAG - GFP Tag - GTTTAA

Protein Sequence:

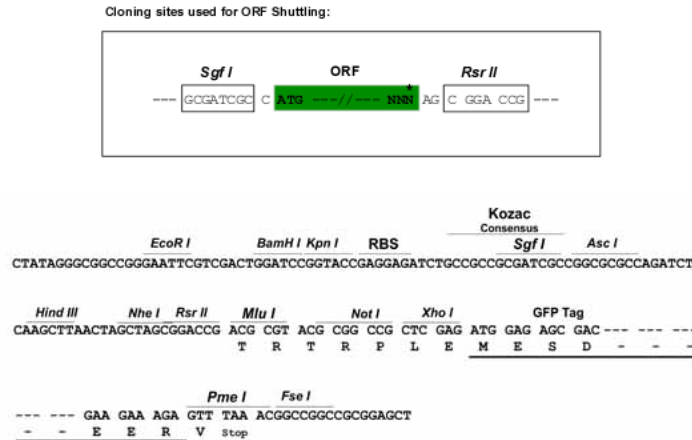
>RG230178 representing NM_001171894
 Red=Cloning site Green=Tags(s)

MGRKKIQITRIMDERNRQVFTTKRKFGLMCKAYELSVLCDCEIALIIFNSSNKLQYASTDMDKVLLKYT
 EYNPHESRTNSDIVETLRKKGLNGCESPDADDYFEHSPLSEDRFSKLNEDSDFIFKRGPPGLPPQNFMS
 SVTVPVTSFNALSYTNPGSSLVSPSLAASSTLTDSSMLSPPTTLHRNVSPGAPQRPSTGNAGGMLSTT
 DLTVPNGAGSSPVGNFVNSRASPNLIGATGANSLGKVMPTKSPPPPGGNGLMNSRKPDLRVVIPPSSK
 GMMPPLNTQRISSSQATQPLATPVVSVTTPSLPPQGLVYSAMPYNTDYSLTSADLSALQGFNSPGMLS
 LGQVSAWQQHHLGQAALSSLVAGGQLSQGSNLSINTNQNISIKSEPISPPRDRMTPSGFQQQQQQQQQQ
 PPPPPQPQPQPQPQPRQEMGRSPVDSLSSSSSYDGSREDPRGDFHSPIVLGRPPNTEDESPPSVKRM
 RMDAWVT

SGP**TRRRLE** - GFP Tag - V

Restriction Sites:

Sgfl-RsrII

Cloning Scheme:


ACCN: NM_001171894

ORF Size: 1491 bp

OTI Disclaimer: The molecular sequence of this clone aligns with the gene accession number as a point of reference only. However, individual transcript sequences of the same gene can differ through naturally occurring variations (e.g. polymorphisms), each with its own valid existence. This clone is substantially in agreement with the reference, but a complete review of all prevailing variants is recommended prior to use. [More info](#)

OTI Annotation: This clone was engineered to express the complete ORF with an expression tag. Expression varies depending on the nature of the gene.

Components: The ORF clone is ion-exchange column purified and shipped in a 2D barcoded Matrix tube containing 10ug of transfection-ready, dried plasmid DNA (reconstitute with 100 ul of water).

Reconstitution Method:

1. Centrifuge at 5,000xg for 5min.
2. Carefully open the tube and add 100ul of sterile water to dissolve the DNA.
3. Close the tube and incubate for 10 minutes at room temperature.
4. Briefly vortex the tube and then do a quick spin (less than 5000xg) to concentrate the liquid at the bottom.
5. Store the suspended plasmid at -20°C. The DNA is stable for at least one year from date of shipping when stored at -20°C.

RefSeq: [NM_001171894.1](#), [NP_001165365.1](#)

RefSeq Size: 5771 bp

RefSeq ORF: 1494 bp

Locus ID: 4205

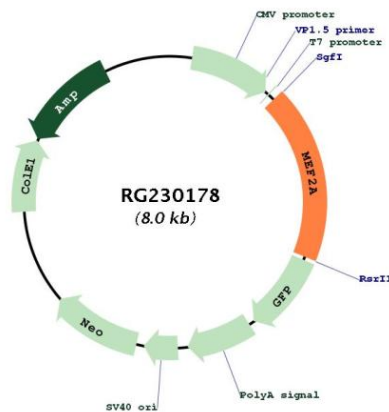
UniProt ID: [Q02078](#)

Cytogenetics: 15q26.3

Protein Families: Transcription Factors

Gene Summary: The protein encoded by this gene is a DNA-binding transcription factor that activates many muscle-specific, growth factor-induced, and stress-induced genes. The encoded protein can act as a homodimer or as a heterodimer and is involved in several cellular processes, including muscle development, neuronal differentiation, cell growth control, and apoptosis. Defects in this gene could be a cause of autosomal dominant coronary artery disease 1 with myocardial infarction (ADCAD1). Several transcript variants encoding different isoforms have been found for this gene.[provided by RefSeq, Jan 2010]

Product images:



Circular map for RG230178