

Product datasheet for **RG230170**

HHAT (NM_001170580) Human Tagged ORF Clone

Product data:

Product Type:	Expression Plasmids
Product Name:	HHAT (NM_001170580) Human Tagged ORF Clone
Tag:	TurboGFP
Symbol:	HHAT
Synonyms:	MART2; SKI1; Skn
Mammalian Cell Selection:	Neomycin
Vector:	pCMV6-AC-GFP (PS100010)
E. coli Selection:	Ampicillin (100 ug/mL)



[View online »](#)

ORF Nucleotide Sequence:

>RG230170 representing NM_001170580
 Red=Cloning site Blue=ORF Green=Tags(s)

TTTTGTAATACGACTCACTATAGGGCGGCCGGAATTCGTCGACTGGATCCGGTACCGAGGAGATCTGCC
 GCC**CGGATCGCC**

ATGCTGCCCCGATGGAACTGGCACTTTACCTACTTGCCTCACTAGGCTTCCACTTCTATTCCTTCTATG
 AAGTTTACAAAGTCTCCAGAGAACACGAAGAGGAGCTGGACCAGGAATTTGAGCTGGAGACTGACACTTT
 ATTTGGAGGATTAAGAAGGATGCGACCGACTTTGAGTGGAGCTTCTGGATGGAATGGGGGAAGCAGTGG
 CTGGTGTGGCTTCTCCTTGGCCACATGGTGTCTCAAATGGCCACACTGCTGGCAAGAAAGCACAGAC
 CCTGGATTCTCATGCTCTATGGGATGTGGGCTGCTGGTGTGTGCTGGGACCCCTGGTGTGGCTATGGT
 TTTGCTCCATACCACCATCTCTTCTGCGTGGCCAGTTCGGTCTCAGCTCCTGACGTGGCTCTGTTCT
 CTCCTCCTCTCCACACTGAGGCTGCAGGTGTGAAGAAGTTAAGAGAAGTGGTACAAGACAGAAA
 ACGAGTACTACCTGCTGCAGTTCAGCTGACCGTTCGCTGCCTGTACTACACCAGCTTCAGCCTGGAGCT
 CTGCTGGCAGCAGCTGCCTGCTGCATCGACCTCCTACTCCTTTCCCTGGATGCTGGCCTATGTCTTTAT
 TATCCAGTCTTACACAATGGGCCATCCTCAGCTTCTCGGAGTTCATCAAACAGATGCAGCAGCAGGAGC
 ATGACTCCCTGAAGGCCAGCCTGTGTCTGGCCCTGGGGCTGGGCCGCCTTCTTTGCTGGTGGTGGCT
 GGCCGAGCTGATGGCTCACCTGATGTACATGCATGCCATCTACAGCAGCATCCCCCTCCTGGAGACTGTC
 TCTTGTGGACCTTAGGAGGACTGGCGTTAGCCAGGTGCTCTTTTTCTACGTGAAGTACTTGGTGTCT
 TTGGCGTGCCTGCTCTGCTCATGCGCCTGGATGGACTCACTCCACCCGCCCTCCCCCGCTGCGTGAGCAC
 CATGTTACAGTTTACCCGGATGTGGAGGTATTTGATGTTGGACTGCATAATTTCTTAATCAGGTATGTG
 TACATTCAGTGGCGGGTCCAGCATGGCCTGCTGGGACACTGTTTTCCACGGCGATGACATTTGCAT
 TTGTGAGCTACTGGCATGGCGGCTACGACTACCTCTGGTCTGGCAGCGCTCAACTGGCTGGGATGCAC
 TGTGGAGAATGGAGTCCGGAGGCTGGTGGAGACTCCCTGCATCCAGGACAGTCTGGCCCGATACTTCTCC
 CCACAAGCTCGCGTCGATTCCACGCTGCCCTTGCTTCTTGTTCACCTCGATGCTGATCCTGTCCAACC
 TGGTATTTCTGGGGCAATGAGGTTGGGAAAACCTACTGGAATAGGATCTTCATACAAGGCTGGCCTTG
 GGTGACCTCTCTGCTGGGATTCCTGTACTGCTACTCCACGTGGGCATTGCCTGGGCCAGACCTAC
 GCCACGGAC

ACGCGTACGCGGCCGCTCGAG - GFP Tag - GTTTAA

Protein Sequence:

>RG230170 representing NM_001170580
 Red=Cloning site Green=Tags(s)

MLPRWELALYLLASLGFHFYSFYEVYKVSREHEEELDQEFLETDTLFGGLKKDATDFEWSFWMWGWKQW
 LVWLLLGHMVVSQMATLLARKHRPWILMLYGMWACWCVLGTGPVAMVLLHTTISFCVAQFRSOLLTWLCS
 LLLLSTLRLQGVEEVKRRWYKTENEYLLQFTLTVRCLYYTFSLELCWQQLPAASTSYSPWMLAYVYF
 YPVLHNGPILSFSEFIKQMQQEQHDSLKASLVLALGLGRLLCWWWLAELMAHLMYMHAIYSSIPLLET
 SCWTLGGLALAQVLFYVYKYLVLFGVPALLMRLDGLTPPALPRCVSTMFSTGMWRYFDVGLHNFLIRYV
 YIPVGGSQHLLGTLFSTAMTFVFSYWHGGYDYLWCWAALNWLGVTVENGVRRLVETPCIQDSLARYFS
 PQARRRFHAALASCSTSMILSNLVLGGNEVGKTYWNRIFIQGWPVWTLVSLGFLYCYSHVGIWAQTY
 ATD

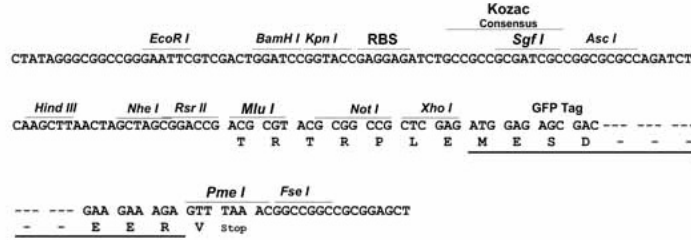
TRTRPLE - GFP Tag - V

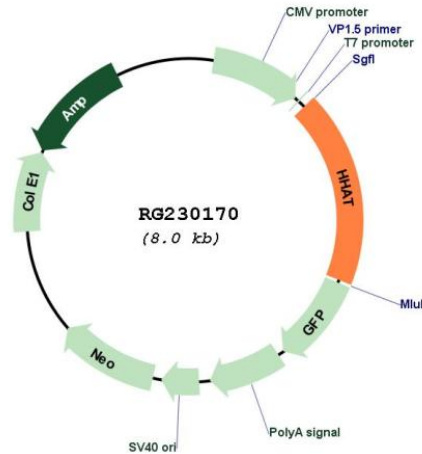
Restriction Sites:

Sgfl-MluI

Cloning Scheme:

Cloning sites used for ORF Shutting:



Plasmid Map:


ACCN:	NM_001170580
ORF Size:	1479 bp
OTI Disclaimer:	The molecular sequence of this clone aligns with the gene accession number as a point of reference only. However, individual transcript sequences of the same gene can differ through naturally occurring variations (e.g. polymorphisms), each with its own valid existence. This clone is substantially in agreement with the reference, but a complete review of all prevailing variants is recommended prior to use. More info
OTI Annotation:	This clone was engineered to express the complete ORF with an expression tag. Expression varies depending on the nature of the gene.
Components:	The ORF clone is ion-exchange column purified and shipped in a 2D barcoded Matrix tube containing 10ug of transfection-ready, dried plasmid DNA (reconstitute with 100 ul of water).

Reconstitution Method:	<ol style="list-style-type: none">1. Centrifuge at 5,000xg for 5min.2. Carefully open the tube and add 100ul of sterile water to dissolve the DNA.3. Close the tube and incubate for 10 minutes at room temperature.4. Briefly vortex the tube and then do a quick spin (less than 5000xg) to concentrate the liquid at the bottom.5. Store the suspended plasmid at -20°C. The DNA is stable for at least one year from date of shipping when stored at -20°C.
RefSeq:	<u>NM_001170580.3</u>
RefSeq Size:	3630 bp
RefSeq ORF:	1482 bp
Locus ID:	55733
UniProt ID:	<u>Q5VTY9</u>
Cytogenetics:	1q32.2
Protein Families:	Transmembrane
Gene Summary:	'Skinny hedgehog' (SKI1) encodes an enzyme that acts within the secretory pathway to catalyze amino-terminal palmitoylation of 'hedgehog' (see MIM 600725).[supplied by OMIM, Jul 2002]