

## Product datasheet for **RG230169**

### **KLHDC4 (NM\_001184856) Human Tagged ORF Clone**

#### **Product data:**

Product Type:	Expression Plasmids
Product Name:	KLHDC4 (NM_001184856) Human Tagged ORF Clone
Tag:	TurboGFP
Symbol:	KLHDC4
Mammalian Cell Selection:	Neomycin
Vector:	pCMV6-AC-GFP (PS100010)
E. coli Selection:	Ampicillin (100 ug/mL)



[View online »](#)

**ORF Nucleotide Sequence:**

>RG230169 representing NM\_001184856  
 Red=Cloning site Blue=ORF Green=Tags(s)

TTTTGTAATACGACTCACTATAGGGCGGCCGGGAATTCGTGACTGGATCCGGTACCGAGGAGATCTGCC  
 GCC**GCGATCGCC**

ATGGGCAAGAAGGGCAAGAAGGAGAAGAAGGGCCGCGGCGGAGAAGACGGCCCAAGATGGAGAAGA  
 AGGTGTCTAAGCGCTCGCGGAAGGAGGAGGAAGACCTGGAAGCGCTCATAGCCCATTCCAGACACTCGA  
 TGCCAAGAGGACTCAGACTGTGGAACCTCCGTGCCCCACCCTACCAAGGTTAAATGCCTCCCTCTCG  
 GTTCATCTGAGAAAGATGAGTTAATCCTTTTTGGAGGTGAATATTTCAACGGCCAAAAAATTTTTTGT  
 ATAACGAGCTCTATGTCTACAATACCAGAAAGGACACCTGGACCAAAGTTGACATCCCCAGTCCACCTCC  
 GAGGCGTGTGCTCACCAGGCGGTGTAGTGCCTCAAGGTGGCGGACAGCTGTGGGTCTTTGGAGGGGAG  
 TTTGCCTCTCCAACGGAGAGCAGTTCTACCACTACAAGGATCTCTGGGTCTGCATTTGGCCACCAAGA  
 CCTGGGAACAAGTCAAGGATTACATCTACTACAACGACGTGTATGCCTTAACTGGACACCTTCACATG  
 GAGCAAGCTGTCCCGTCAAGGACGGGGCCACCCAGATCAGGCTGCCAGATGTCGGTCACTCCCGAG  
 GCGGCGATCGTCTGCTATGGGGGCTACTCGAAACAGAGAGTTAAGAAAGACGTGGACAAGGGCACACGGC  
 ACTCAGACATGTTCTGCTGAAGCCAGAGGACGGAAGAGAAGACAAGTGGGTTTGGACTCGGATGAACCC  
 TTCGGGGGTCAAGCCACCCACGGTCTGGCTTTTCCGTGGCCATGGCCCGAATCACCAGACACTGTTC  
 TTCGGGGGTGTCTGTGACGAGGAAGAGGAGGAGAGCCTGTGCGGGCAGTCTTCAACGATCTGTACTTCT  
 ACGACGCCACCAGGAACCGTTGGTTTGGAGGACAGCTGAAGGGACCAAGTCTGAAAAGAAGAAACGCAG  
 GCGGGGCAGAAAAGAGGAGCCCGAAGGTGTAGCAGGCCGGCGTGTGGGGAGCTGGCACCCAGGGGCT  
 GTGCAGCTGGTCAAGGAGGTGGTGGCCGAGGATGGCACCGTGGTACCATTAAAGCAGGTGCTCACCAGCGC  
 CAGGCTCGGCGGGGACGCCCGTCTGAGGACGAAGACAGCCTTGAGGAGGCCGGCAGCCCCGCACCTGG  
 GCCGTGTCCACGCTCCAACGCCATGCTGGCTGTGAAGCATGGGGTGTCTACGCTCTATGGGGGCATGTTT  
 GAGGCCGCGACCCAGGTACCCCTCAGCGACCTGCACTGCCTGGACCTGCACAGGATGGAGGCGTGGA  
 AGGCCTTGGTGGAGATGGACCCAGAAACTCAGGAGTGGCTGGAGGAGACGGACTCGGAAGAGGACAGTGA  
 GGAGTTGAGGGCGCCGAGGGTGGGGTGCAGCAGCAAGACAGCGGAGAGGAGCGGTGCGGAGGAC

**ACGCGTACGCGGCCGCTCGAG** - GFP Tag - GTTTAA

**Protein Sequence:**

>RG230169 representing NM\_001184856  
 Red=Cloning site Green=Tags(s)

MGKKGKKEKKGRGAEKTAAMEKKVSKRSRKEEEDLEALIAHFQTLDAKRTQTVELPCPPPSRPLNASLS  
 VHPEKDELILFGGEYFNGQKTFLYNELVYVYNTKDTWTKVDIPSPPPRRCAHQAVVVPQGGGQLWVFGGE  
 FASPNGEQFYHYKDLWVHLATKTWEQVKDYIYNDVYAFNLDTFTWSKLSPSGTGPTPRSGCQMSVTPQ  
 GGIIVVYGGYSKQRVKVDKGRHSDMFLKPEDGREDKWWVTRMNP SGVKPTPRSGF SVAMAPNHQTLF  
 FGGVCDDEEEESLSGEFFNDLYFYDATRNRWFEGQLKGPKEKKRRRGRKEEPEGGRPACGGAGTQGP  
 VQLVKEVVAEDGTVVTIKQVLTAPGSAGQPRSEDEDSLEEAGSPAPGPCPRSNAMLAVKHGVLVYVYGGMF  
 EAGDRQVTLSDLHCLDLHRMEAWKALVENDPETQEWLEETDSEEDSEEVEGAEGGVDDSDSEESGAED

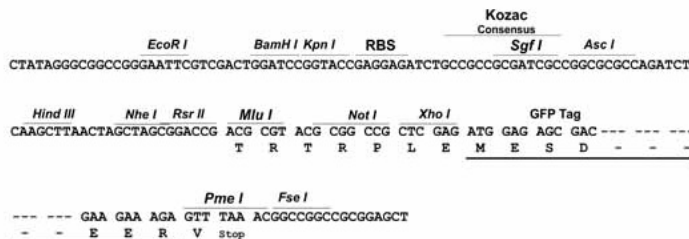
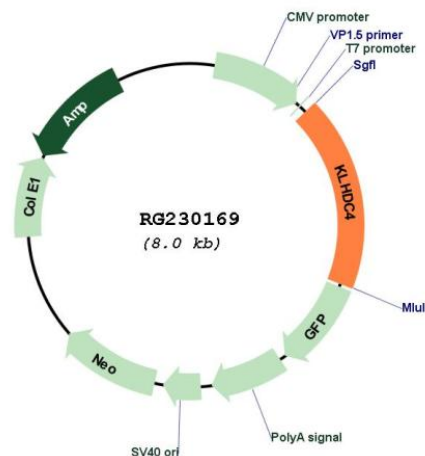
**TRTRPLE** - GFP Tag - V

**Restriction Sites:**

SgfI-MluI

**Cloning Scheme:**

Cloning sites used for ORF Shutting:


**Plasmid Map:**


- ACCN:** NM\_001184856
- ORF Size:** 1467 bp
- OTI Disclaimer:** The molecular sequence of this clone aligns with the gene accession number as a point of reference only. However, individual transcript sequences of the same gene can differ through naturally occurring variations (e.g. polymorphisms), each with its own valid existence. This clone is substantially in agreement with the reference, but a complete review of all prevailing variants is recommended prior to use. [More info](#)
- OTI Annotation:** This clone was engineered to express the complete ORF with an expression tag. Expression varies depending on the nature of the gene.
- Components:** The ORF clone is ion-exchange column purified and shipped in a 2D barcoded Matrix tube containing 10ug of transfection-ready, dried plasmid DNA (reconstitute with 100 ul of water).

**Reconstitution Method:**

1. Centrifuge at 5,000xg for 5min.
2. Carefully open the tube and add 100ul of sterile water to dissolve the DNA.
3. Close the tube and incubate for 10 minutes at room temperature.
4. Briefly vortex the tube and then do a quick spin (less than 5000xg) to concentrate the liquid at the bottom.
5. Store the suspended plasmid at -20°C. The DNA is stable for at least one year from date of shipping when stored at -20°C.

**RefSeq:** [NM\\_001184856.2](#)

**RefSeq Size:** 1851 bp

**RefSeq ORF:** 1470 bp

**Locus ID:** 54758

**UniProt ID:** [Q8TBB5](#)

**Cytogenetics:** 16q24.2