

Product datasheet for **RG230140**

GPR137 (NM_001170726) Human Tagged ORF Clone

Product data:

Product Type:	Expression Plasmids
Product Name:	GPR137 (NM_001170726) Human Tagged ORF Clone
Tag:	TurboGFP
Symbol:	GPR137
Synonyms:	C11orf4; GPR137A; TM7SF1L1
Mammalian Cell Selection:	Neomycin
Vector:	pCMV6-AC-GFP (PS100010)
E. coli Selection:	Ampicillin (100 ug/mL)



[View online »](#)

ORF Nucleotide Sequence:

>RG230140 representing NM_001170726
 Red=Cloning site Blue=ORF Green=Tags(s)

TTTTGTAATACGACTCACTATAGGGCGGCCGGAATTCGTCGACTGGATCCGGTACCGAGGAGATCTGCC
 GCC**GCGATCGCC**

ATGCTCTGGGCTGTGAGGACAAGATGTTACGTAGTCAAGGCACAGCTGGGGCCAACGGTGGCCCTGGAAG
 GCAGAGCACCCCGGGCTCCGGGCCCTAGTTGCTTGGGCAACGGGAAGTGTAGCGACCTGGCCCAATCAC
 CTCTCGGAACGTCACTCGGGCCTCCCTCCCTGACATGGAGAGTAACTGTCTGGCCTGGTGCCTGCTGCC
 GGGCTGGTGCCTGCGCTGCCACCTGCTGTGACCTGGGGCTGACAGCTGCCTACACCACCCTGTATGCC
 TGCTCTTCTTCTCCGTCTATGCCAGCTCTGGCTGGTGTCTGTATGGGCACAAGCGTCTCAGCTATCA
 GACGGTGTCTGGCCCTCTGTCTGCTCTGGGCCGCTTGGTACCACCCTTTCTCCTTCTACTCCGA
 GATACTCCCCGCGCAACCGCTGGGGCCCTTGGCCTTCTGGCTTCTCTACTGCTGCCCCGTCTGCCTGC
 AGTTCTTACCTTGACGCTTATGAACCTCTACTTTGCCAGGTGGTGTCAAGGCCAAGGTGAAGCGTCG
 GCCGGAGATGAGCCGAGGCTTGTCTGCTGTCCGAGGGGCTTTGTGGGGCTCGCTGCTTTTCTGCTG
 GTGAACGTGCTGTGTGCTGCTCTCCATCGGGCGCCGGGCACAGCCCTGGGCCCTGCTGCTTGTCCGCG
 TCCTGGTGAGCGACTCCCTGTTGTCATCTGCGCGCTGTCTTGTGCTGCCTGCTGCCTCGTCCGACG
 GCGGGCGCCCTCCACTAGCATCTACCTGGAGGCCAAGGGGACAGTGTGTGCCAGGCGGCCGCGATGGGT
 GGCGCCATGGTCTGCTCTATGCCAGCCGGGCTGCTACAACCTGACAGCACTGGCCTTGGCCCCCAGA
 GCCGGCTGGACACCTTCGATTACGACTGGTACAATGTGTCTGACCAGGCGGACCTGGTGAATGACCTGGG
 GAACAAAGGCTACCTGGTATTTGGCCTCATCTTCTGTGGGAGCTACTGCCACCACCCTGCTGGTG
 GGCTTCTCCGGGTGCACCGCCCCACAGGACCTGAGCACCAGCCACATCTCAATGGCAGGTCTTTG
 CCTCTCGGTCTACTTCTTTGACCGGGCTGGGCACTGTGAAGATGAGGGGCTGCTCTGGGACACAGCCG
 GGGTGAGAGCACAGGTGCCAGGACCAGGCGGCCACCACCACAGTCTCTACTCCACCCACAGACGTGAT
 CCCCCTCCCTCCCCACAGAATACCCAGCCCCAGTCCCCCTACCCTAGGCCCTGTGCCAAGTTTGTG
 TGCCGCTTCTGCCAGGATCTGGGGTGTGGTACCCCTCTCTGGCCGGCTCCTGCTGCTCCTG
 TCATAGTGAGCTTGTGCCGTCCCC

ACGCGTACGCGGCCGCTCGAG – GFP Tag – GTTTAA

Protein Sequence:

>RG230140 representing NM_001170726
 Red=Cloning site Green=Tags(s)

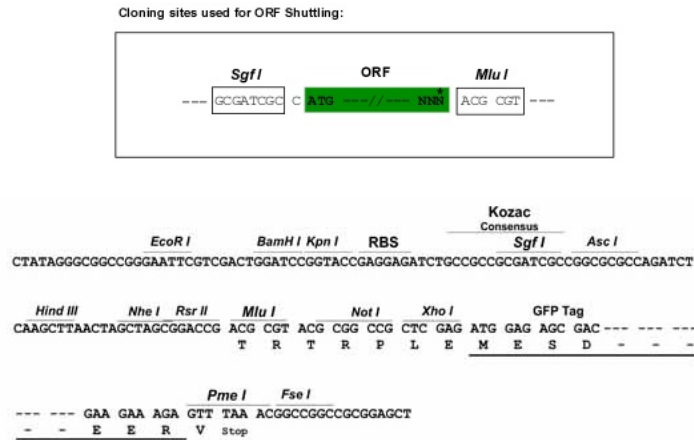
MLWAVRTRCYVVKAKLQPTVALEGRAPRAPGPSCLGNGNCQRPGPITSRNVTRASLPDMESNLSGLVPAA
 GLVLPALPPAVTLGLTAAYTTL YALLFFSVYAQLWLVLLYGHKRLSYQTVFLALCLLWAALRTTLFSFYFR
 DTPRANRLGPLFWLLYCCPVCLQFFTL TLMNL YFAQVVFKAKVRRPEMSRGLLAVRGAFV GASLLFLL
 VNVLCAVL SHRRRAQPWALLLVRVLVSDSLFVICALSLAACLCLVARRAPSTSIYLEAKGTSVCQAAMG
 GAMVLLYASRACYNL TALA LAPQSRLDTFDYDWNVSDQADLVNDLGNKGYLVFGLILFWELLPTLLV
 GFFRVHRPPQDLSTSHILNGQVFA SRSYFFDRAGHCEDEGCSWEHSRGESTRCQDQAATTTVSTPPHRRD
 PPPSPTEYPGPSPPHRPLCQVCLPLLAQDPGGRGYPLLWPAPCCSCHSELVPSP

TRTRPLE – GFP Tag – V

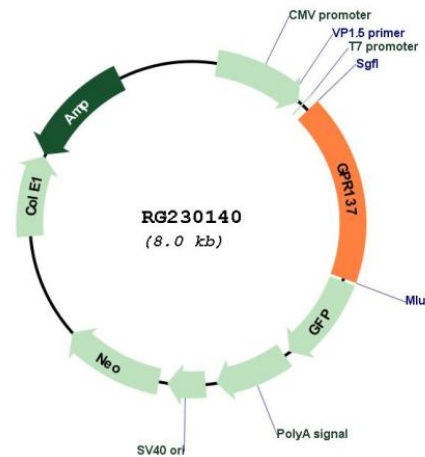
Restriction Sites:

Sgfl-MluI

Cloning Scheme:



Plasmid Map:



ACCN: NM_001170726

ORF Size: 1425 bp

OTI Disclaimer: The molecular sequence of this clone aligns with the gene accession number as a point of reference only. However, individual transcript sequences of the same gene can differ through naturally occurring variations (e.g. polymorphisms), each with its own valid existence. This clone is substantially in agreement with the reference, but a complete review of all prevailing variants is recommended prior to use. [More info](#)

OTI Annotation: This clone was engineered to express the complete ORF with an expression tag. Expression varies depending on the nature of the gene.

Components: The ORF clone is ion-exchange column purified and shipped in a 2D barcoded Matrix tube containing 10ug of transfection-ready, dried plasmid DNA (reconstitute with 100 ul of water).

Reconstitution Method:	<ol style="list-style-type: none">1. Centrifuge at 5,000xg for 5min.2. Carefully open the tube and add 100ul of sterile water to dissolve the DNA.3. Close the tube and incubate for 10 minutes at room temperature.4. Briefly vortex the tube and then do a quick spin (less than 5000xg) to concentrate the liquid at the bottom.5. Store the suspended plasmid at -20°C. The DNA is stable for at least one year from date of shipping when stored at -20°C.
RefSeq:	<u>NM_001170726.1, NP_001164197.1</u>
RefSeq Size:	1609 bp
RefSeq ORF:	1428 bp
Locus ID:	56834
UniProt ID:	<u>Q96N19</u>
Cytogenetics:	11q13.1
Protein Families:	Druggable Genome, Transmembrane
Gene Summary:	Lysosomal integral membrane protein that may regulate MTORC1 complex translocation to lysosomes (PubMed:31036939). May play a role in autophagy (PubMed:31036939). [UniProtKB/Swiss-Prot Function]