

Product datasheet for **RG230124**

Clusterin (CLU) (NM_001171138) Human Tagged ORF Clone

Product data:

Product Type:	Expression Plasmids
Product Name:	Clusterin (CLU) (NM_001171138) Human Tagged ORF Clone
Tag:	TurboGFP
Symbol:	CLU
Synonyms:	AAG4; APOJ; CLI; KUB1; MGC24903; SGP-2; SGP2; SP-40; TRPM-2; TRPM2
Mammalian Cell Selection:	Neomycin
Vector:	pCMV6-AC-GFP (PS100010)
E. coli Selection:	Ampicillin (100 ug/mL)



[View online »](#)

ORF Nucleotide Sequence:

>RG230124 representing NM_001171138
 Red=Cloning site Blue=ORF Green=Tags(s)

TTTTGTAATACGACTCACTATAGGGCGGCCGGAATTCGTCGACTGGATCCGGTACCGAGGAGATCTGCC
 GCC**CGGATCGCC**

ATGGAGGCGTGCAAAGACTCCAGAATTGGAGGCATGATGAAGACTCTGCTGCTGTTTGTGGGGCTGCTGC
 TGACCTGGGAGAGTGGGCAGTCTGGGGACCAGACGGTCTCAGACAATGAGCTCCAGGAAATGTCCAA
 TCAGGGAAGTAAGTACGTCAATAAGGAAATTCAAAATGCTGTCAACGGGGTGAAACAGATAAAGACTCTC
 ATAGAAAAACAAACGAAGAGCGCAAGACTGCTCAGCAACCTAGAAGAAGCCAAGAAGAAGAAAGAGG
 ATGCCCTAAATGAGACCAGGGAATCAGAGACAAAGCTGAAGGAGCTCCCAGGAGTGTGCAATGAGACCAT
 GATGGCCCTCTGGGAAGAGTGTAAAGCCCTGCCTGAAACAGACCTGCATGAAGTTCTACGCACGCGTCTGC
 AGAAGTGGCTCAGGCCTGGTTGGCCGACGCTTGAGGAGTTCTGAACCAGAGCTCGCCCTTCTACTTCT
 GGATGAATGGTGACCGCATCGACTCCCTGCTGGAGAACGACCGGCAGCAGACGCACATGCTGGATGTCAT
 GCAGGACCACTCAGCCGCGCTCCAGCATCATAGACGAGCTCTCCAGGACAGGTTCTTACCCCGGGAG
 CCCAGGATACCTACCACTACCTGCCCTTCAGCCTGCCACCGGAGGCCCTCACTTCTTCTTCCCAAGT
 CCCGCATCGTCCGAGCTTGATGCCCTTCTCCTGACGAGCCCTGAACTTCCACGCCATGTTCCAGCC
 CTTCTTGAGATGATACAGAGGCTCAGCAGGCCATGGACATCCACTTCCATAGCCCGGCCCTCCAGCAC
 CCGCAACAGAATTCATACGAGAAGGCGACGATGACCGGACTGTGTGCCGGGAGATCCGCCACAACCTCCA
 CGGGCTGCCTGCGGATGAAGGACCAGTGTGACAAGTGCCGGGAGATCTTGTCTGTGGACTGTTCCACCAA
 CAACCCCTCCAGGCTAAGCTGCGGCGGGAGCTCGACGAATCCCTCCAGGTGCTGAGAGGTTGACCAGG
 AAATAACAGAGCTGCTAAAGTCTACCACTGGAAGATGCTCAACACCTCCTCTGCTGGAGCAGCTGA
 ACGAGCAGTTTAACTGGGTGTCGCGGCTGGCAAACCTCACGCAAGGCGAAGACCAGTACTATCTGCGGGT
 CACCACGGTGGCTTCCCACTTCTGACTCGGAGGTTCTTCCGGTGTCACTGAGGTGGTGTGTAAGCTC
 TTTGACTCTGATCCCATCACTGTGACGGTCCCTGTAGAAGTCTCCAGGAAGAACCCTAAATTTATGGAGA
 CCGTGGCGGAGAAAGCGCTGCAGGAATACCGCAAAAAGCACCGGGAGGAG

AG**CGGACCG**ACGCGTACGCGGCCGCTCGAG - GFP Tag - GTTTAA

Protein Sequence:

>RG230124 representing NM_001171138
 Red=Cloning site Green=Tags(s)

MEACKDSRIGGMMKTLVGLLLTWESGQVLGDQTVSDNELQEMSNQGSKYVNKEIQNAVNGVKQIKTL
 IEKTNEERKTLVSNLEEAKKKEDALNETRESETKLKEPVCNETMMALWEECKPCLKQTCMKFYARVC
 RSGSGLVGRQLEEFNLQSSPFYFWMNGDRIDSLLENDRQQTHMLDVMQDHF SRASSIIDELFQDRFFTRE
 PQDTYHYLPFSLPHRRPHFFPKSRIVRSLMPFSPYEPLNFHAMFQPFLEMIHEAQAMDIFHSPAFQH
 PPTEFIREGDDRTVCREIRHNSTGCLRMKDQCKCREILSVDCSTNNPSQAKLRRELDLQVAERLTR
 KYNELLKSYQWKMLNTSLLLEQLNEQFNWYSRLANLTQGEDQYILRVTTVASHTSDSDVPSGVTEVVVKL
 FSDSPTITVTPVEVSRKNPKFMETVAEKALQEYRKKHREE

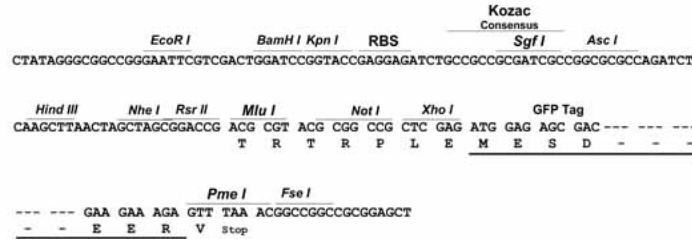
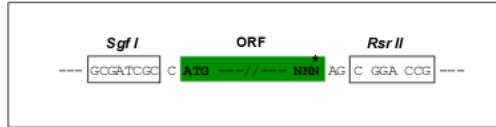
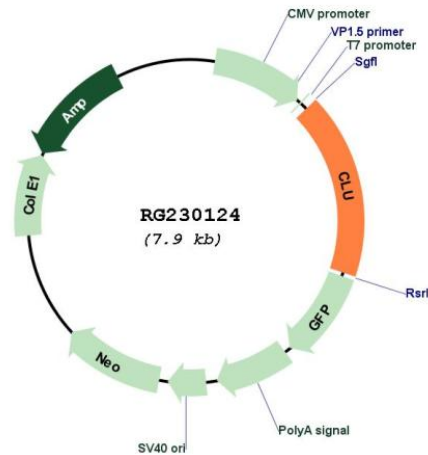
SGP**TRRRLE** - GFP Tag - V

Restriction Sites:

SgfI-RsrII

Cloning Scheme:

Cloning sites used for ORF Shuttling:


Plasmid Map:

ACCN: NM_001171138

ORF Size: 1380 bp

OTI Disclaimer: The molecular sequence of this clone aligns with the gene accession number as a point of reference only. However, individual transcript sequences of the same gene can differ through naturally occurring variations (e.g. polymorphisms), each with its own valid existence. This clone is substantially in agreement with the reference, but a complete review of all prevailing variants is recommended prior to use. [More info](#)
OTI Annotation: This clone was engineered to express the complete ORF with an expression tag. Expression varies depending on the nature of the gene.

Components:	The ORF clone is ion-exchange column purified and shipped in a 2D barcoded Matrix tube containing 10ug of transfection-ready, dried plasmid DNA (reconstitute with 100 ul of water).
Reconstitution Method:	<ol style="list-style-type: none">1. Centrifuge at 5,000xg for 5min.2. Carefully open the tube and add 100ul of sterile water to dissolve the DNA.3. Close the tube and incubate for 10 minutes at room temperature.4. Briefly vortex the tube and then do a quick spin (less than 5000xg) to concentrate the liquid at the bottom.5. Store the suspended plasmid at -20°C. The DNA is stable for at least one year from date of shipping when stored at -20°C.
RefSeq:	<u>NM_001171138.1, NP_001164609.1</u>
RefSeq Size:	2854 bp
RefSeq ORF:	1382 bp
Locus ID:	1191
Cytogenetics:	8p21.1
Protein Families:	Druggable Genome, Secreted Protein
Gene Summary:	The protein encoded by this gene is a secreted chaperone that can under some stress conditions also be found in the cell cytosol. It has been suggested to be involved in several basic biological events such as cell death, tumor progression, and neurodegenerative disorders. Alternate splicing results in both coding and non-coding variants.[provided by RefSeq, May 2011]