

Product datasheet for **RG230119**

Repulsive Guidance Molecule A (RGMA) (NM_001166283) Human Tagged ORF Clone

Product data:

Product Type:	Expression Plasmids
Product Name:	Repulsive Guidance Molecule A (RGMA) (NM_001166283) Human Tagged ORF Clone
Tag:	TurboGFP
Symbol:	RGMA
Synonyms:	RGM
Mammalian Cell Selection:	Neomycin
Vector:	pCMV6-AC-GFP (PS100010)
E. coli Selection:	Ampicillin (100 ug/mL)



[View online »](#)

ORF Nucleotide Sequence:

>RG230119 representing NM_001166283
 Red=Cloning site Blue=ORF Green=Tags(s)

TTTTGTAATACGACTCACTATAGGGCGGCCGGGAATTCGTCGACTGGATCCGGTACCGAGGAGATCTGCC
 GCCCGCATCGCC

ATGGGTGGCTGGGGCCACGACGGCGGGAACCTCGAGGGAGAGGCTAGTGGTAACAGGCCGAGCTGGAT
 GGATGGGTATGGGGAGAGGGGCAGGACGTTTCAGCCCTGGGATTCTGGCCGACCCTCGCCTCCTCTCTG
 CAGCTTCCCCGCAGCCACCTCCCGTGCAAGATCCTCAAGTGCAACTCTGAGTTCTGGAGCGCCACGTCG
 GGCAGCCACGCCCCAGCCTCAGACGACACCCCCGAGTTCTGTGCAGCCTTGCGCAGCTACGCCCTGTGCA
 CGCGGGCAGCGCCCGCACCTGCCGGGGTACCTGGCCTACCACTCGGCCGTCCATGGCAGTAGAGGACCT
 CATGAGCCAGCACAAGTCTCAAGGATGGCCCCACCTCGCAGCCAGCCTGCGCAGCTCCCACCGGCC
 GGAGACAGCCAGGAGCGCTCGGACAGCCCCGAGATCTGCCATTACGAGAAGAGCTTTCACAAGCACTCGG
 CCACCCCCAACTACACGCACTGTGGCCTCTTCGGGGACCCACACCTCAGGACTTTCACCGACCGCTTCCA
 GACCTGCAAGGTGCAGGGCGCCTGGCCGCTCATCGACAATAATTACCTGAACGTGCAGGTACCAACACG
 CCTGTGCTGCCCGCTCAGCGGCCACTGCCACCAGCAAGCTCACCATCATCTTCAAGAAGTTCAGGAGT
 GTGTGGACCAGAAGGTGTACCAGGCTGAGATGGACGAGCTCCCGCCGCCTTCGTGGATGGCTCTAAGAA
 CGGTGGGGACAAGCACGGGGCCAAACAGCCTGAAGATCACTGAGAAGGTGTGAGGCCAGCAGTGGAGATC
 CAGGCCAAGTACATCGGCACCACCATCGTGGTGCAGCAGGTGGGCGCTACCTGACCTTTGCCGTCGCA
 TGCCAGAGGAAGTGGTCAATGCTGTGGAGGACTGGGACAGCCAGGGTCTCTACCTCTGCCTGCGGGGCTG
 CCCCCTCAACCAGCAGATCGACTTCCAGGCTTCCACACCAATGCTGAGGGCACCAGTGGCCGAGGCTG
 GCAAGCAGCCAGCCTGCACCCACAGCCCCGAGACCTTCCCATACGAGACAGCCGTGGCCAAGTGAAGG
 AGAAGTGCAGGGTGGAGGACCTGTACTACAGGCTGCGTCTTCGACCTCCTACCAGGGCGCAGCTGAA
 CTTACACTGGCCGCTACTACGCGTTGGAGGATGTCAAGATGCTCCACTCCAACAAGACAAGCAACTGCAC
 CTGTATGAGAGGACTCGGGACCTGCCAGGACGGCGGCTGCGGGGCTGCCCTGGCCCCCGGCCCTCC
 TGGGCGCCCTCGTCCCGCTCTGCCCTGCTCCCTGTGTTCTGC

AGCGGACCGACGCGTACGCGGCCGCTCGAG - GFP Tag - GTTTAA

Protein Sequence:

>RG230119 representing NM_001166283
 Red=Cloning site Green=Tags(s)

MGGLGPRRAGTSRERLVVTGRAGWMGMGRGAGRSALGFWPTLAFLLCSFPAATSPCKILKCNSEFWSATS
 GSHAPASDDTPEFCAALRSYALCRRRTARTCRGDLAYHSAVHGIEDLMSQHNSKDGPTSQPRLRLTLP
 GDSQERSDSPEICHYEKSFHKHSATPNYTHCGLFGDPLRFTTDRFQTKVQGAWPLIDNNYLNQVNT
 PVLPGSAATATSKLTIIIFKNFQECVDQKVVYQAEMDELPAAFVDGSKNGGDKHGANSKITEKVSQGHVEI
 QAKYIGTTIVVRQVGRYLTFVAVRMPEEVVNAVEDWDSQGLYLCLRGCP LNQQIDFQAFHTNAEGTGARRL
 AAASPAPTAPETFPYETAVAKCKEKLPEVDLYYQACVFDLLTTGDVNF TLAAYYAL EDVKMLHSNKDKLH
 LYERTRDLPGRAAAGLPLAPRPLL GALVPLLALLPVFC

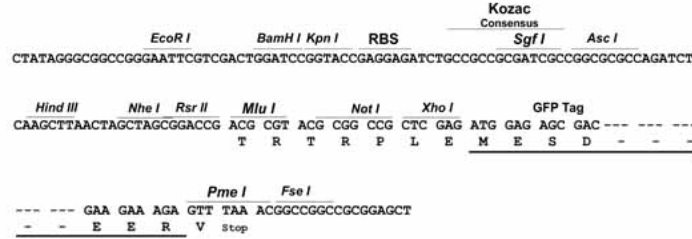
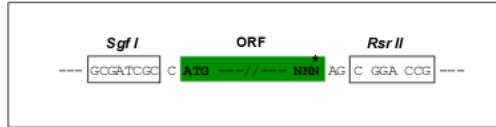
SGPTRRRLE - GFP Tag - V

Restriction Sites:

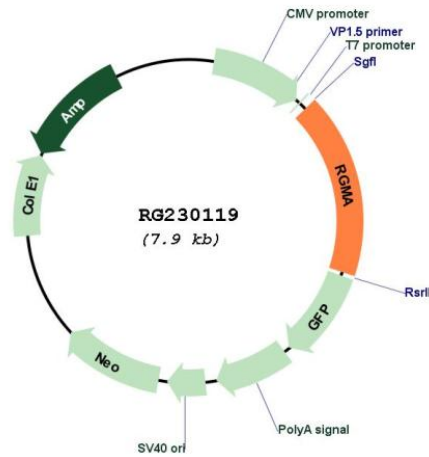
Sgfl-RsrII

Cloning Scheme:

Cloning sites used for ORF Shuttling:



Plasmid Map:



ACCN: NM_001166283

ORF Size: 1374 bp

OTI Disclaimer:	<p>Due to the inherent nature of this plasmid, standard methods to replicate additional amounts of DNA in E. coli are highly likely to result in mutations and/or rearrangements. Therefore, OriGene does not guarantee the capability to replicate this plasmid DNA. Additional amounts of DNA can be purchased from OriGene with batch-specific, full-sequence verification at a reduced cost. Please contact our customer care team at custsupport@origene.com or by calling 301.340.3188 option 3 for pricing and delivery.</p> <p>The molecular sequence of this clone aligns with the gene accession number as a point of reference only. However, individual transcript sequences of the same gene can differ through naturally occurring variations (e.g. polymorphisms), each with its own valid existence. This clone is substantially in agreement with the reference, but a complete review of all prevailing variants is recommended prior to use. More info</p>
OTI Annotation:	This clone was engineered to express the complete ORF with an expression tag. Expression varies depending on the nature of the gene.
Components:	The ORF clone is ion-exchange column purified and shipped in a 2D barcoded Matrix tube containing 10ug of transfection-ready, dried plasmid DNA (reconstitute with 100 ul of water).
Reconstitution Method:	<ol style="list-style-type: none"> 1. Centrifuge at 5,000xg for 5min. 2. Carefully open the tube and add 100ul of sterile water to dissolve the DNA. 3. Close the tube and incubate for 10 minutes at room temperature. 4. Briefly vortex the tube and then do a quick spin (less than 5000xg) to concentrate the liquid at the bottom. 5. Store the suspended plasmid at -20°C. The DNA is stable for at least one year from date of shipping when stored at -20°C.
RefSeq:	NM_001166283.1 , NP_001159755.1
RefSeq Size:	3200 bp
RefSeq ORF:	1377 bp
Locus ID:	56963
UniProt ID:	Q96B86
Cytogenetics:	15q26.1
Gene Summary:	This gene encodes a member of the repulsive guidance molecule family. The encoded protein is a glycosylphosphatidylinositol-anchored glycoprotein that functions as an axon guidance protein in the developing and adult central nervous system. This protein may also function as a tumor suppressor in some cancers. Alternate splicing results in multiple transcript variants. [provided by RefSeq, Oct 2009]