

Product datasheet for **RG230108**

SLC22A8 (NM_001184733) Human Tagged ORF Clone

Product data:

Product Type:	Expression Plasmids
Product Name:	SLC22A8 (NM_001184733) Human Tagged ORF Clone
Tag:	TurboGFP
Symbol:	SLC22A8
Synonyms:	OAT3
Mammalian Cell Selection:	Neomycin
Vector:	pCMV6-AC-GFP (PS100010)
E. coli Selection:	Ampicillin (100 ug/mL)



[View online »](#)

ORF Nucleotide Sequence:

>RG230108 representing NM_001184733
 Red=Cloning site Blue=ORF Green=Tags(s)

TTTTGTAATACGACTCACTATAGGGCGGCCGGAATTCGTCGACTGGATCCGGTACCGAGGAGATCTGCC
 GCC**GCGATCGCC**

ATGACCTTCTCGGAGATCCTGGACCGTGTGGGAAGCATGGGCCATTTCCAGTTCCTGCATGTAGCCATAC
 TGGGCCTCCCGATCCTCAACATGGCCAACCAACCTGCTGCAGATCTTACAGCCGCCACCCCTGTCCA
 CCACTGTCGCCCCGCCCAATGCCTCCACAGGCGCTTGGGTGCTCCCATGGGCCCAAATGGGAAGCCT
 GAGAGGTGCCTCCGTTTTGTACATCCGCCCAATGCCAGCCTGCCCAATGACACCCAGAGGGCCATGGAGC
 CATGCCTGGATGGCTGGGTCTACAACAGCACCAAGGACTCCATTGTGACAGAGTGGGACTTGGTGTGCAA
 CTCCAACAACTGAAGGAGATGGCCAGTCTATCTTCATGGCAGGTATACTGATTGGAGGGCTCGTGCTT
 GGAGACCTGTCTGACAGTTTGGCCGAGGCCATCCTGACCTGCAGCTACCTGCTGCTGGCAGCCAGCG
 GCTCCGGTGCAGCCTTACGCCCCACCTTCCCCATCTACATGGTCTCCGCTTCTGTGTGGCTTTGGCAT
 CTCAGGCATTACCCTGAGCACCGTCATCTTGAATGTGGAATGGGTGCCTACCCGGATGCGGGCCATCATG
 TCGACAGCACTCGGGTACTGCTACACCTTTGGCCAGTTTATTCTGCCCGGCTGGCTACGCCATCCCCC
 AGTGGCGTTGGCTGCAGTAACTGTGTCCATTCCTTCTTCGCTTCTTCTATCATCTGGTGGACACC
 AGAGTCCATACGCTGGTTGGTCTTGTCTGGAAAGTCTCGAAGGCCCTGAAGATACTCCGGCGGGTGGCT
 GTCTTCAATGGCAAGAAGGAAGAGGGAGAAAGGCTCAGCTTGGAGGAGCTCAAACCAACCTGCAGAAGG
 AGATCTCCTTGGCCAAGGCCAAGTACACCGCAAGTGACCTGTTCGGATACCCATGCTGCGCCGCATGAC
 CTTCTGTCTTCCCTGGCTGGTTTGTACCGGTTTTGCCTACTATAGTTTGGCTATGGGTGTGGAAGAA
 TTTGGAGTCAACCTCTACATCCTCCAGATCATCTTTGGTGGGGTGCATGTCCAGCCAAGTTCATACCA
 TCCTCTCCTTAAGCTACCTGGCCGGCATACCCTCAGGCCGCTGCCCTGCTCCTGGCAGGAGGGCCAT
 CTTGGCTCTCACCTTTGTGCCCTTGGACTTGCAGACCGTGAGGACAGTATTGGCTGTGTTTGGGAAGGGA
 TGCCATCCAGCTCCTTCAGCTGCCTTCTCCTCTACACAAGTGAATTATACCCACAGTATCAGGCAAA
 CAGGTATGGCGTAAGTAACCTGTGACCCGCGTGGGAAGCATGGTGTCCCGCTGGTAAAAATCACGGG
 TGAGGTACAGCCCTTATCCCAATATCATCTACGGGATACCCGCCCTCCTCGGGGCGAGTGTGCCCTC
 TTCCTGCCTGAGACCCTGAATCAGCCCTTGCCAGAGACTATCGAAGACCTGGAAAAGTGGTCCCTGCGGG
 CAAAGAAGCCAAAGCAGGAGCCAGAGGTGAAAAGGCCTCCAGAGGATCCCTCTACAGCCTCACGGACC
 AGCCTGGGCTCCAGC

ACGCGTACGCGGCCGCTCGAG – GFP Tag – GTTTAA

Protein Sequence:

>RG230108 representing NM_001184733
 Red=Cloning site Green=Tags(s)

MTFSEILDRVSMGHFQFLHVAAILGLPILNMANHNLLQIFTAATPVVHCRPPHNASTGPWVLPMPNGKP
 ERCLRFVHPPNASLPNDTQRAMEPCLDGWVYNSTKDSIVTEWDLVCNSNKLKEMAQSIIFMAGILIGGLVL
 GDLSDRFGRRPILTCSYLLLAASGGAFAFSPFPFIYMFVRFVLCGFGISGITLSTVILNVEVPTMRMRAIM
 STALGYCYTFGQFILPGLAYAIQWRWLQTVSIPFFVFFLSSWWTPEIRWLVLSGKSSKALKILRRVA
 VFNGKKEEGERLSLEELKLNQKEISLAKAKYASDLFRIPMLRRMTFCLSLAWFATGFAYYSLAMGVEE
 FGVNLYILQIIFGGVDVPAKFITILSLSYLRHTTQAAALLLAGGAILALTFVPLDLQTVRVLAVFGKG
 CLSSSFSLFLYTSELYPTVIRQTGMGVSNLWTRVGSMSPLVKITGEVQPFIPNIIYGITALLGGSAAAL
 FLPETLNQPLPETIEDLENWSLRAKKPKQEPEVEKASQRIPLQPHGPGLGSS

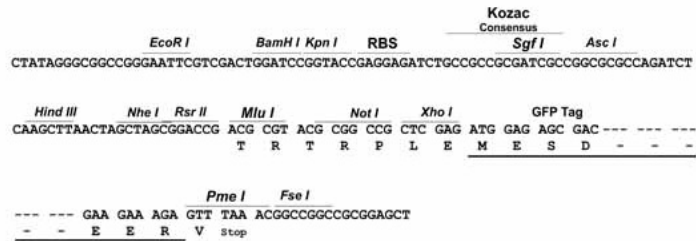
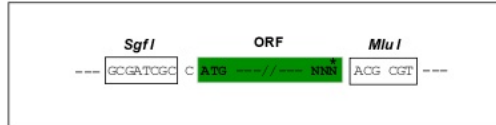
TRTRPLE – GFP Tag – V

Restriction Sites:

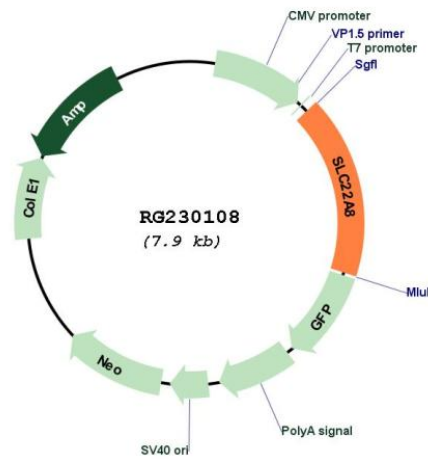
Sgfl-MluI

Cloning Scheme:

Cloning sites used for ORF Shutting:



Plasmid Map:



ACCN:	NM_001184733
ORF Size:	1629 bp
OTI Disclaimer:	The molecular sequence of this clone aligns with the gene accession number as a point of reference only. However, individual transcript sequences of the same gene can differ through naturally occurring variations (e.g. polymorphisms), each with its own valid existence. This clone is substantially in agreement with the reference, but a complete review of all prevailing variants is recommended prior to use. More info
OTI Annotation:	This clone was engineered to express the complete ORF with an expression tag. Expression varies depending on the nature of the gene.
Components:	The ORF clone is ion-exchange column purified and shipped in a 2D barcoded Matrix tube containing 10ug of transfection-ready, dried plasmid DNA (reconstitute with 100 ul of water).
Reconstitution Method:	<ol style="list-style-type: none">1. Centrifuge at 5,000xg for 5min.2. Carefully open the tube and add 100ul of sterile water to dissolve the DNA.3. Close the tube and incubate for 10 minutes at room temperature.4. Briefly vortex the tube and then do a quick spin (less than 5000xg) to concentrate the liquid at the bottom.5. Store the suspended plasmid at -20°C. The DNA is stable for at least one year from date of shipping when stored at -20°C.
RefSeq:	NM_001184733.1 , NP_001171662.1
RefSeq Size:	1924 bp
RefSeq ORF:	1356 bp
Locus ID:	9376
UniProt ID:	Q8TCC7
Cytogenetics:	11q12.3
Protein Families:	Transmembrane
Gene Summary:	This gene encodes a protein involved in the sodium-independent transport and excretion of organic anions, some of which are potentially toxic. The encoded protein is an integral membrane protein and appears to be localized to the basolateral membrane of the kidney. Multiple alternatively spliced transcript variants that encode different protein isoforms have been described for this gene. [provided by RefSeq, May 2010]