

Product datasheet for **RG230082**

Cell adhesion molecule 2 (CADM2) (NM_001167674) Human Tagged ORF Clone

Product data:

Product Type:	Expression Plasmids
Product Name:	Cell adhesion molecule 2 (CADM2) (NM_001167674) Human Tagged ORF Clone
Tag:	TurboGFP
Symbol:	Cell adhesion molecule 2
Synonyms:	IGSF4D; Necl-3; NECL3; SynCAM 2; synCAM2
Mammalian Cell Selection:	Neomycin
Vector:	pCMV6-AC-GFP (PS100010)
E. coli Selection:	Ampicillin (100 ug/mL)
ORF Nucleotide Sequence:	>RG230082 representing NM_001167674 Red=Cloning site Blue=ORF Green=Tags(s)

TTTTGTAATACGACTCACTATAGGGCGGCCGGAATTCGTCGACTGGATCCGGTACCGAGGAGATCTGCC
GCC**CGATCGCC**

ATGATTTGGAAACGCAGCGCGTCTCCGCTTCTACAGTGTCTGCGGGCTCCTGCTACAAGGCAGCCAAG
GGCAGTTTCCACTAACACAGAATGTAACCGTTGTTGAAGGTGGAAGTCAATTTTGACCTGCAGGGTTGA
TCAAAATGATAACACCTCCCTCCAGTGGTCAAATCCAGCTCAACAGACTCTGTACTTTGACGACAAGAAA
GCTTTAAGGGACAATAGGATCGAGCTGGTTCGCGCTTCTGGCATGAATTGAGTATTAGTGTGAGTGTG
TGCTCTCTCTGATGAAGGACAGTACACCTGTTCTTTATTACAATGCCTGTCAAACTTCCAAGGCATA
TCTCACCGTTCTGGGTGTTCTGAAAAGCCTCAGATTAGTGGATTCTCATACCAGTTATGGAGGTGAC
TTGATGCAGCTGACTTGCAAAACATCTGGTAGTAAACCTGCAGCTGATATAAGATGGTTCAAAATGACA
AAGAGATTAAGATGTAATAATTTAAAAGAAGAGGATGCAAAATCGAAGACATTCAGTGTGAGCAGCAC
ACTGGACTTCCGAGTGGACCGGAGTGTGATGGAGTGGCGGTCATCTGCAGAGTATGATCAGCAATCCCTC
AATGCCACCCCTCAGGTAGCCATGCAGGTGCTAGAAATACACTATACACCATCAGTTAAGATTATACCAT
CGACTCCTTTCCACAAGAAGGACAGCCTTTAATTTGACTTGTGAATCCAAAGGAAAACCACTGCCAGA
ACCTGTTTTGTGGACAAGGATGGCGGAGAATTACCAGATCCTGACCGAATGGTTGTGAGTGGTAGGGAC
CTAAACATTCTTTCTGAACAAAACGGATAATGGTACATATCGATGTGAAGCCACAACACCATTTGGCC
AAAGCAGTGGGAATATGTTCTCATTGTGCATGATGTTCCCAACACTTTGCTTCCCACTACTATCATCCC
CTCCCTTACCAGTCAACAGTCAACAACCTGTAGCCATAAACAACAGCCCAACCATCTGCAACAACC
AGCAGCATCAGAGATCCTAATGCTTTGGCTGGCCAGAATGGCCCTGACCATGCTCTCATAGGAGGAATAG
TGGCTGTAGTTGATTTGTACGCTGTGTTCTATCTTTCTGCTTGGTCGATATCTGGCAAGGCATAAAGG
AACGTATTTAACAATGAAGCTAAAGGAGCTGAAGATGCACCAGATGCTGATACAGCCATTATCAATGCT
GAAGGCAGCCAAGTCAATGCTGAAGAGAAAAAGAGTATTTTCATT

ACGCGTACGCGGCCGCTCGAG - GFP Tag - GTTTAA



[View online »](#)

Protein Sequence: >RG230082 representing NM_001167674
Red=Cloning site Green=Tags(s)

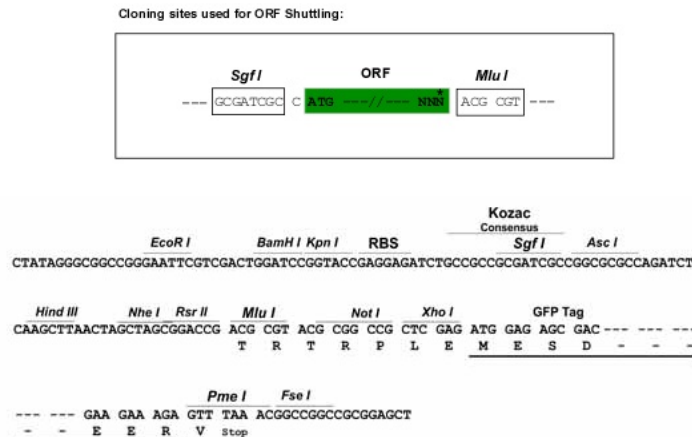
MIWKRSVLRFYSVCGLLQLQGSQGFPLTQNVTVVEGGTAILTCRVDQNDNTSLQWSNPAQQLYFDDKK
 ALRDNRIELVRASWHELISVSDVSLDEGQYTCSLFTMPVKTSKAYLTVLGVPEKQISGFSSPVMEDG
 LMQLTCKTSGSKPAADIRWFKNDKEIKDKYLKEEDANRKTFTVSTLDFRVDSDGVAVICRVDHESL
 NATPQVAMQVLEIHYPYSVKIIPSTPFPQEQPLILTCEKSGKPLPEPVLWTKDGGELPDPDRMVVSGRE
 LNILFLNKTDNGTYRCEATNTIGQSSAEYVLIVHDPNTLLPTTIIPSLTTATVTTTVAITTSPTTSATT
 SSIRDPNALAGQNGPDHALIGGIYAVVVVFTLCSIFLLGRYLARHKGYLTNEAKGAEDAPDADTAIINA
 EGSQVNAEEKKEYFI

TRTRPLE - GFP Tag - V

Restriction Sites:

SgfI-MluI

Cloning Scheme:



ACCN: NM_001167674

ORF Size: 1305 bp

OTI Disclaimer: The molecular sequence of this clone aligns with the gene accession number as a point of reference only. However, individual transcript sequences of the same gene can differ through naturally occurring variations (e.g. polymorphisms), each with its own valid existence. This clone is substantially in agreement with the reference, but a complete review of all prevailing variants is recommended prior to use. [More info](#)

OTI Annotation: This clone was engineered to express the complete ORF with an expression tag. Expression varies depending on the nature of the gene.

Components: The ORF clone is ion-exchange column purified and shipped in a 2D barcoded Matrix tube containing 10ug of transfection-ready, dried plasmid DNA (reconstitute with 100 ul of water).

Reconstitution Method:

1. Centrifuge at 5,000xg for 5min.
2. Carefully open the tube and add 100ul of sterile water to dissolve the DNA.
3. Close the tube and incubate for 10 minutes at room temperature.
4. Briefly vortex the tube and then do a quick spin (less than 5000xg) to concentrate the liquid at the bottom.
5. Store the suspended plasmid at -20°C. The DNA is stable for at least one year from date of shipping when stored at -20°C.

RefSeq: [NM_001167674.2](#)

RefSeq Size: 9580 bp

RefSeq ORF: 1308 bp

Locus ID: 253559

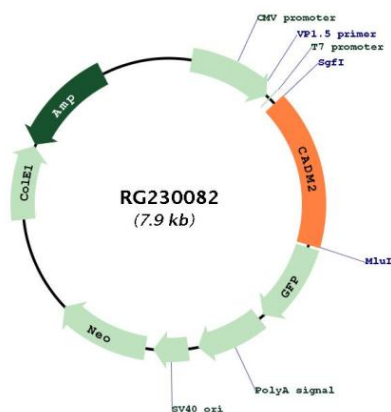
UniProt ID: [Q8N3J6](#)

Cytogenetics: 3p12.1

Protein Families: Druggable Genome, Transmembrane

Gene Summary: This gene encodes a member of the synaptic cell adhesion molecule 1 (SynCAM) family which belongs to the immunoglobulin (Ig) superfamily. The encoded protein has three Ig-like domains and a cytosolic protein 4.1 binding site near the C-terminus. Proteins belonging to the protein 4.1 family crosslink spectrin and interact with other cytoskeletal proteins. Multiple transcript variants encoding different isoforms have been found for this gene. [provided by RefSeq, Feb 2012]

Product images:



Circular map for RG230082