

## Product datasheet for **RG230078**

### Repulsive Guidance Molecule A (RGMA) (NM\_001166289) Human Tagged ORF Clone

#### Product data:

Product Type:	Expression Plasmids
Product Name:	Repulsive Guidance Molecule A (RGMA) (NM_001166289) Human Tagged ORF Clone
Tag:	TurboGFP
Symbol:	RGMA
Synonyms:	RGM
Mammalian Cell Selection:	Neomycin
Vector:	pCMV6-AC-GFP (PS100010)
E. coli Selection:	Ampicillin (100 ug/mL)
ORF Nucleotide Sequence:	>RG230078 representing NM_001166289 Red=Cloning site Blue=ORF Green=Tags(s)

TTTTGTAATACGACTCACTATAGGGCGGCCGGAATTCGTCGACTGGATCCGGTACCGAGGAGATCTGCC  
GCC**CGATCGCC**

ATGGGTATGGGGAGAGGGGCAGGACGTTAGCCCTGGGATTCTGGCCGACCCTCGCCTTCTTCTCTGCA  
GCTTCCCCGCAGCCACCTCCCCGTGCAAGATCCTCAAGTGAACCTCTGAGTTCTGGAGCGCCACGTCGGG  
CAGCCACGCCCCAGCCTCAGACGACACCCCCGAGTTCTGTGCAGCCTTGGCAGCTACGCCCTGTGCAGC  
CGGGGACGGCCGCACCTGCCGGGTGACCTGGCCTACCACTCGGCCGTCATGGCATAGAGGACCTCA  
TGAGCCAGCACAAGTGTCCAAGGATGGCCCCACCTCGCAGCCAGCCTGCGCAGCTCCCACCGGCCGG  
AGACAGCCAGGAGCGCTCGGACAGCCCCGAGATCTGCCATTACGAGAAGAGCTTTACAAGCACTCGGCC  
ACCCCCAACTACACGCACTGTGGCCTTTCGGGGACCCACACCTCAGGACTTTCACCGACCCTTCCAGA  
CCTGCAAGGTGCAGGGCGCCTGGCCGCTCATCGACAATAATTACCTGAACGTGCAGGTACCAACACGCC  
TGTGCTGCCCGGCTCAGCGGCCACTGCCACCAGCAAGCTCACCATCATCTTCAAGAACTTCCAGGAGTGT  
GTGGACCAGAAGGTGTACCAGGCTGAGATGGACGAGCTCCCGGCCCTTCTGTTGATGGCTAAGAACG  
GTGGGGACAAGCACGGGGCCAACAGCCTGAAGATCACTGAGAAGGTGTGAGGCCAGCAGCTGGAGATCCA  
GGCCAAGTACATCGCCACCACCATCGTGGTGGCCAGGTGGGCCGCTACCTGACCTTTGCCGTCCGCATG  
CCAGAGGAAGTGGTCAATGCTGTGGAGGACTGGGACAGCCAGGGTCTTACCTTGCTGCGGGGCTGCC  
CCCTCAACCAGCAGATCGACTTCCAGGCCTTCCACACCAATGCTGAGGGCACCGGTGCCCGCAGGCTGGC  
AGCCGCCAGCCCTGCACCCACAGCCCCGAGACCTTCCATACGAGACAGCCGTGGCCAAGTGAAGGAG  
AAGCTGCCGTTGGAGGACCTGTACTACCAGGCTGCGTCTTCGACCTCCTCACCACGGGCGACGTGAACT  
TCACACTGGCCGCTACTACGCGTTGGAGGATGTCAAGATGCTCCACTCCAACAAAGACAACTGCACCT  
GTATGAGAGGACTCGGGACCTGCCAGGCAGGGCGGCTGCGGGGCTGCCCTGGCCCCCGGCCCTCTG  
GGCCCTCGTCCGCTCCTGGCCCTGCTCCCTGTGTTCTGC

AGCGGACCGACGCGTACGCGGCCGCTCGAG - GFP Tag - GTTTAA



[View online »](#)

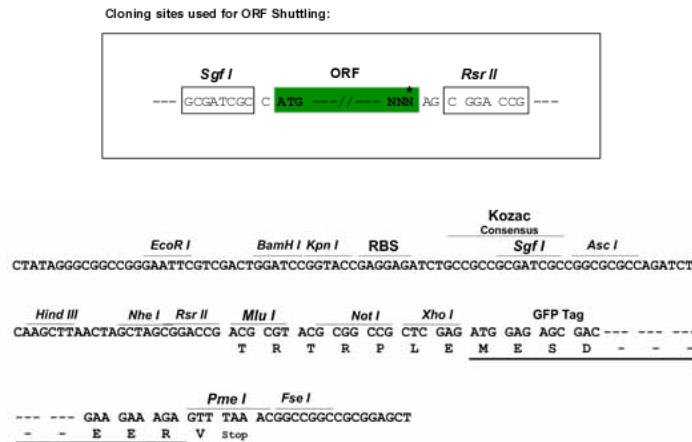
Protein Sequence: >RG230078 representing NM\_001166289  
 Red=Cloning site Green=Tags(s)

MGMGRGAGRSALGFWPTLAFLLCSFPAATSPCKILKCNSEFWSATSGSHAPASDDTPEFCAALRSYALCT  
 RRTARTCRGDLAYHSAVHGIEDLMSQHNSKDGPTSQPRLRTLPPAGDSQERSDSPEICHYEKSFHKHSA  
 TPNYTHCGLFGDPHLRFTDRFQTKVKVQAWPLIDNNYLNQVNTNTPVLPGSAATATSKLTIIFKNFQEC  
 VDQKVYQAEEMDELPAAFVDGSKNGGDKHGANSKITEKVSQGHVEIQAKYIGTTIVVRQVGRYLTFAVRM  
 PEEVVNAVEDWDSQGLYLCLRGCP LNQQIDFQAFHTNAEGTGARRLAAASPAPTAPETFPYETAVAKCKE  
 KLPVEDLYYQACVFDLLTTGDVNF TLAAYALEDVKMLHSNKDKLHL YERTRDLPGRAAAGLPLAPRPLL  
 GALVPLLALLPVFC

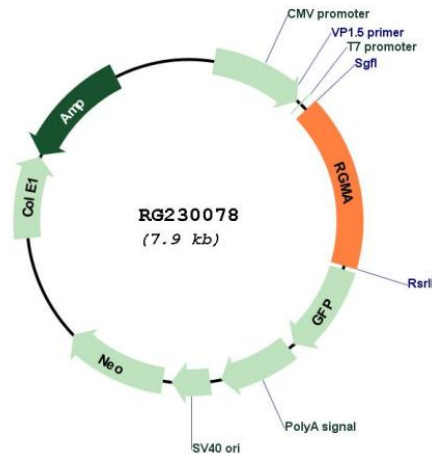
SGPTRRRLE - GFP Tag - V

Restriction Sites: SgfI-RsrII

Cloning Scheme:



Plasmid Map:



ACCN: NM\_001166289

<b>ORF Size:</b>	1302 bp
<b>OTI Disclaimer:</b>	The molecular sequence of this clone aligns with the gene accession number as a point of reference only. However, individual transcript sequences of the same gene can differ through naturally occurring variations (e.g. polymorphisms), each with its own valid existence. This clone is substantially in agreement with the reference, but a complete review of all prevailing variants is recommended prior to use. <a href="#">More info</a>
<b>OTI Annotation:</b>	This clone was engineered to express the complete ORF with an expression tag. Expression varies depending on the nature of the gene.
<b>Components:</b>	The ORF clone is ion-exchange column purified and shipped in a 2D barcoded Matrix tube containing 10ug of transfection-ready, dried plasmid DNA (reconstitute with 100 ul of water).
<b>Reconstitution Method:</b>	<ol style="list-style-type: none"><li>1. Centrifuge at 5,000xg for 5min.</li><li>2. Carefully open the tube and add 100ul of sterile water to dissolve the DNA.</li><li>3. Close the tube and incubate for 10 minutes at room temperature.</li><li>4. Briefly vortex the tube and then do a quick spin (less than 5000xg) to concentrate the liquid at the bottom.</li><li>5. Store the suspended plasmid at -20°C. The DNA is stable for at least one year from date of shipping when stored at -20°C.</li></ol>
<b>RefSeq:</b>	<a href="#">NM_001166289.1</a> , <a href="#">NP_001159761.1</a>
<b>RefSeq Size:</b>	3078 bp
<b>RefSeq ORF:</b>	1305 bp
<b>Locus ID:</b>	56963
<b>UniProt ID:</b>	<a href="#">Q96B86</a>
<b>Cytogenetics:</b>	15q26.1
<b>Gene Summary:</b>	This gene encodes a member of the repulsive guidance molecule family. The encoded protein is a glycosylphosphatidylinositol-anchored glycoprotein that functions as an axon guidance protein in the developing and adult central nervous system. This protein may also function as a tumor suppressor in some cancers. Alternate splicing results in multiple transcript variants. [provided by RefSeq, Oct 2009]