

Product datasheet for **RG230077**

Repulsive Guidance Molecule A (RGMA) (NM_001166287) Human Tagged ORF Clone

Product data:

Product Type:	Expression Plasmids
Product Name:	Repulsive Guidance Molecule A (RGMA) (NM_001166287) Human Tagged ORF Clone
Tag:	TurboGFP
Symbol:	Repulsive Guidance Molecule A
Synonyms:	RGM
Mammalian Cell Selection:	Neomycin
Vector:	pCMV6-AC-GFP (PS100010)
E. coli Selection:	Ampicillin (100 ug/mL)
ORF Nucleotide Sequence:	>RG230077 representing NM_001166287 Red=Cloning site Blue=ORF Green=Tags(s)

TTTTGTAATACGACTCACTATAGGGCGGCCGGAATTCGTCGACTGGATCCGGTACCGAGGAGATCTGCC
GCC**CGATCGCC**

ATGGGTATGGGGAGAGGGGACAGGACGTTAGCCCTGGGATTCTGGCCGACCCTCGCCTTCTTCTCTGCA
GCTTCCCCGCAGCCACCTCCCCGTGCAAGATCCTCAAGTGCAACTCTGAGTTCTGGAGCGCCACGTCGGG
CAGCCACGCCCCAGCCTCAGACGACACCCCCGAGTTCTGTGCAGCCTTGGCAGCTACGCCCTGTGCAGC
CGGGGACGGCCGCACCTGCCGGGTGACCTGGCCTACCACTCGGCCGTCATGGCATAGAGGACCTCA
TGAGCCAGCACAAGTGTCCAAGGATGGCCCCACCTCGCAGCCAGCCTGCGCAGCTCCCACCGGCCGG
AGACAGCCAGGAGCGCTCGGACAGCCCCGAGATCTGCCATTACGAGAAGAGCTTTACAAGCACTCGGCC
ACCCCCAACTACACGCACTGTGGCCTTTCGGGGACCCACACCTCAGGACTTTCACCGACCCTTCCAGA
CCTGCAAGGTGCAGGGCGCCTGGCCGCTCATCGACAATAATTACCTGAACGTGCAGGTACCAACACGCC
TGTGCTGCCCGGCTCAGCGGCCACTGCCACCAGCAAGCTCACCATCATCTTCAAGAACTTCCAGGAGTGT
GTGGACCAGAAGGTGTACCAGGCTGAGATGGACGAGCTCCCGGCCCTTCTGTTGATGGCTAAGAACG
GTGGGGACAAGCACGGGGCCAACAGCCTGAAGATCACTGAGAAGGTGTGAGGCCAGCAGTGGAGATCCA
GGCCAAGTACATCGCCACCACCATCGTGGTGGCCAGTGGGCCGCTACCTGACCTTTGCCGTCCGCATG
CCAGAGGAAGTGGTCAATGCTGTGGAGGACTGGGACAGCCAGGGTCTTACCTTGCTGCGGGGCTGCC
CCCTCAACCAGCAGATCGACTTCCAGGCCTTCCACACCAATGCTGAGGGCACCGGTGCCCGCAGGCTGGC
AGCCGCCAGCCCTGCACCCACAGCCCCGAGACCTTCCATACGAGACAGCCGTGGCCAAGTGAAGGAG
AAGCTGCCGTTGGAGGACCTGTACTACCAGGCTGCGTCTTCGACCTCCTCACCACGGGCGACGTGAACT
TCACACTGGCCGCTACTACGCGTTGGAGGATGTCAAGATGCTCCACTCCAACAAAGACAACTGCACCT
GTATGAGAGGACTCGGGACCTGCCAGGCAGGGCGGCTGCGGGGCTGCCCTGGCCCCCGGCCCTCTG
GGCGCCTCGTCCGCTCCTGGCCCTGCTCCCTGTGTTCTGC

AGCGGACCGACGCGTACGCGGCCGCTCGAG - GFP Tag - GTTAA



[View online »](#)

Protein Sequence: >RG230077 representing NM_001166287
 Red=Cloning site Green=Tags(s)

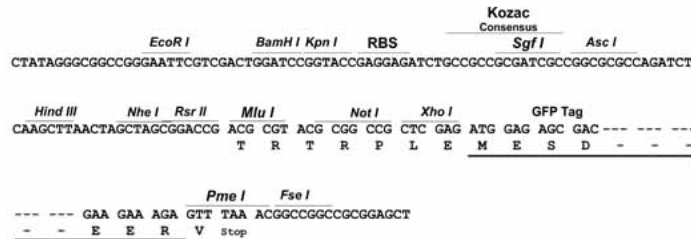
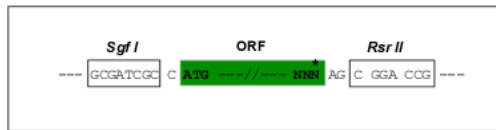
MGMGRGAGRSALGFWPTLAFLLCSFPAATSPCKILKCNSEFWSATSGSHAPASDDTPEFCAALRSYALCT
 RRTARTCRGDLAYHSVHGIEDLMSQHNSKDGPTSQPRLRTLPPAGDSQERSDSPEICHYEKSFHKHSA
 TPNYTHCGLFGDPLHRTFTDRFQTKVKQGAWPLIDNNYLNQVNTNTPVLPGSAATATSKLTIIIFKNFQEC
 VDQKVYQAEMDELPAAFVDGSKNGGDKHGANSKITEKVSQGHVEIQAKYIGTTIVVRQVGRYLTFAVRM
 PEEVVNAVEDWDSQGLYLCLRGCP LNQQIDFQAFHTNAEGTGARRLAAASPAPTAPETFPYETAVAKCKE
 KLPVEDLYYQACVFDLLTTGDVNF TLAAYALEDVKMLHSNKDKLHL YERTRDLPGRAAAGLPLAPRPLL
 GALVPLLALLPVFC

SGPTRRRLE - GFP Tag - V

Restriction Sites: SgfI-RsrII

Cloning Scheme:

Cloning sites used for ORF Shuttling:



ACCN: NM_001166287

ORF Size: 1302 bp

OTI Disclaimer: The molecular sequence of this clone aligns with the gene accession number as a point of reference only. However, individual transcript sequences of the same gene can differ through naturally occurring variations (e.g. polymorphisms), each with its own valid existence. This clone is substantially in agreement with the reference, but a complete review of all prevailing variants is recommended prior to use. [More info](#)

OTI Annotation: This clone was engineered to express the complete ORF with an expression tag. Expression varies depending on the nature of the gene.

Components: The ORF clone is ion-exchange column purified and shipped in a 2D barcoded Matrix tube containing 10ug of transfection-ready, dried plasmid DNA (reconstitute with 100 ul of water).

Reconstitution Method:

1. Centrifuge at 5,000xg for 5min.
2. Carefully open the tube and add 100ul of sterile water to dissolve the DNA.
3. Close the tube and incubate for 10 minutes at room temperature.
4. Briefly vortex the tube and then do a quick spin (less than 5000xg) to concentrate the liquid at the bottom.
5. Store the suspended plasmid at -20°C. The DNA is stable for at least one year from date of shipping when stored at -20°C.

RefSeq: [NM_001166287.1](#), [NP_001159759.1](#)

RefSeq Size: 3174 bp

RefSeq ORF: 1305 bp

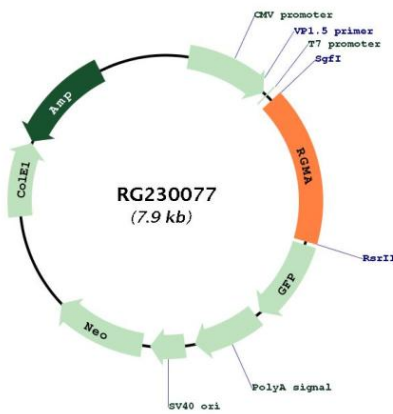
Locus ID: 56963

UniProt ID: [Q96B86](#)

Cytogenetics: 15q26.1

Gene Summary: This gene encodes a member of the repulsive guidance molecule family. The encoded protein is a glycosylphosphatidylinositol-anchored glycoprotein that functions as an axon guidance protein in the developing and adult central nervous system. This protein may also function as a tumor suppressor in some cancers. Alternate splicing results in multiple transcript variants. [provided by RefSeq, Oct 2009]

Product images:



Circular map for RG230077