

Product datasheet for **RG230002**

TAZ (WWTR1) (NM_001168280) Human Tagged ORF Clone

Product data:

Product Type:	Expression Plasmids
Product Name:	TAZ (WWTR1) (NM_001168280) Human Tagged ORF Clone
Tag:	TurboGFP
Symbol:	WWTR1
Synonyms:	TAZ
Mammalian Cell Selection:	Neomycin
Vector:	pCMV6-AC-GFP (PS100010)
E. coli Selection:	Ampicillin (100 ug/mL)
ORF Nucleotide Sequence:	>RG230002 representing NM_001168280 Red=Cloning site Blue=ORF Green=Tags(s)

TTTTGTAATACGACTCACTATAGGGCGGCCGGAATTCGTCGACTGGATCCGGTACCGAGGAGATCTGCC
GCC**CGATCGCC**

ATGAATCCGGCCTCGGCGCCCCCTCCGCTCCCGCCGCTGGGCAGCAAGTGATCCACGTACGCAGGACC
TAGACACAGACCTCGAAGCCCTTTCAACTCTGTCATGAATCCGAAGCCTAGCTCGTGCCGAAGAAGAT
CCTGCCGAGTCTTTCTTAAGGAGCCTGATTCGGGCTCGCACTCGGCCAGTCCAGCACCGACTCGTCG
GGCGGCCACCCGGGGCCTCGACTGGCTGGGGGTGCCAGCATGTCGGCTCGCACTCGTCCCGCGTCCC
TGCAGCTGGGCACCGCGCGGGTCTGCGGGTAGCCCCGCGCAGCAGCACGCGCACCTCCGCCAGCAGTC
CTACGACGTGACCGACGAGCTGCCACTGCCCCCGGGCTGGGAGATGACCTTCACGGCCACTGGCCAGAGG
TACTTCTCAATCACATAGAAAAATCACACATGGCAAGACCCTAGGAAGGCGATGAATCAGCCTCTGA
ATCATATGAACCTCCACCTGCCGTGAGTTCACACACAGTGCCTCAGAGGTCCATGGCAGTATCCCAGCC
AAATCTCGTGATGAATCACCAACACCAGCAGCAGATGGCCCCAGTACCCTGAGCCAGCAGAACCACCCC
ACTCAGAACCCACCCGAGGGCTCATGAGTATGCCAATGCGCTGACCACTCAGCAGCAGCAGCAGAGA
AACTGCGGCTTCAGAGAATCCAGATGGAGAGAGAAAGGATTGCAATGCGCAAGAGGAGCTCATGAGGCA
GGAAGCTGCCCTCTGTCGACAGCTCCCCATGGAAGCTGAGACTCTTCCCCAGTTCAGGCTGTCTCAAC
CCACCCACGATGACCCAGACATGAGATCCATCACTAATAATAGCTCAGATCCTTTCCTCAATGGAGGGC
CATATCATTGAGGGAGCAGAGCACTGACAGTGGCCTGGGGTTAGGGTGCTACAGTGTCCCAACTCC
GGAGGACTTCTCAGCAATGTGGATGAGATGGATACAGGAGAAAACGAGGACAAACACCCATGAACATC
AATCCCCAACAGACCCGTTTCCCTGATTTCTTACTGTCTTCCAGGAACAAACGTTGACTTAGGAACCT
TGAATCTGAAGACCTGATCCCCCTTCAATGATGTAGAGTCTGCTCTGAACAAAAGTGAGCCCTTTCT
AACCTGGCTG

ACGCGTACGCGGCCGCTCGAG - GFP Tag - GTTTAA



[View online »](#)

Protein Sequence: >RG230002 representing NM_001168280
 Red=Cloning site Green=Tags(s)

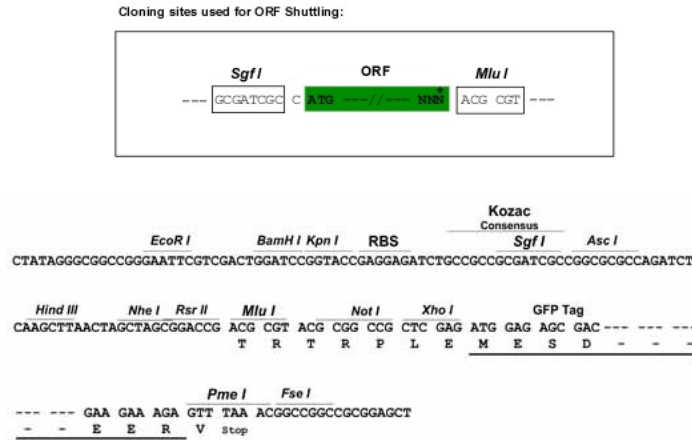
MNPASAPPLPPPQQVIHVTQDLDTDLEALFNSVMNPKPSSWRKKILPESFFKEPDSGSHSRQSSDSS
 GGHPGPRLAGGAQHVRSHSPASLQLGTGAGAAGSPAQQHAHLRQQSYDVTDELPLPPGWEMTFTATGQR
 YFLNHIEKITTWQDPRKAMNQPLNHNMLHPAVSSTPVPQRSMVSPQNLVMNHQHQQMAPSTLSQQNHP
 TQNPPAGLMSMPNALTTQQQQQKLRQLRQIQMERERIMRQEELMRQEALCRQLPMEATLAPVQAAVN
 PPTMTPDMRSITNNSDPFLNGGPYHSREQSTDSGLGLGCYSVPTTPEDFLSNVDEMDTGENAGQTPMNI
 NPQQTRFPDFLDCLPGTNVDLGTLESEDLIPLFNDVESALNKSEPFLTWL

TRTRPLE - GFP Tag - V

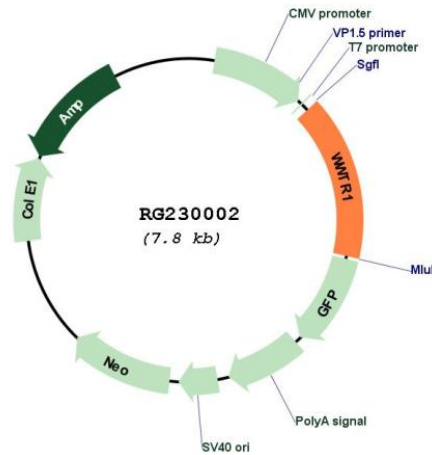
Restriction Sites:

SgfI-MluI

Cloning Scheme:



Plasmid Map:



ACCN:

NM_001168280

ORF Size:	1200 bp
OTI Disclaimer:	The molecular sequence of this clone aligns with the gene accession number as a point of reference only. However, individual transcript sequences of the same gene can differ through naturally occurring variations (e.g. polymorphisms), each with its own valid existence. This clone is substantially in agreement with the reference, but a complete review of all prevailing variants is recommended prior to use. More info
OTI Annotation:	This clone was engineered to express the complete ORF with an expression tag. Expression varies depending on the nature of the gene.
Components:	The ORF clone is ion-exchange column purified and shipped in a 2D barcoded Matrix tube containing 10ug of transfection-ready, dried plasmid DNA (reconstitute with 100 ul of water).
Reconstitution Method:	<ol style="list-style-type: none">1. Centrifuge at 5,000xg for 5min.2. Carefully open the tube and add 100ul of sterile water to dissolve the DNA.3. Close the tube and incubate for 10 minutes at room temperature.4. Briefly vortex the tube and then do a quick spin (less than 5000xg) to concentrate the liquid at the bottom.5. Store the suspended plasmid at -20°C. The DNA is stable for at least one year from date of shipping when stored at -20°C.
RefSeq:	NM_001168280.3
RefSeq Size:	4999 bp
RefSeq ORF:	1203 bp
Locus ID:	25937
UniProt ID:	Q9GZV5
Cytogenetics:	3q25.1
Protein Families:	Druggable Genome, Transcription Factors
Gene Summary:	Transcriptional coactivator which acts as a downstream regulatory target in the Hippo signaling pathway that plays a pivotal role in organ size control and tumor suppression by restricting proliferation and promoting apoptosis. The core of this pathway is composed of a kinase cascade wherein STK3/MST2 and STK4/MST1, in complex with its regulatory protein SAV1, phosphorylates and activates LATS1/2 in complex with its regulatory protein MOB1, which in turn phosphorylates and inactivates YAP1 oncoprotein and WWTR1/TAZ. WWTR1 enhances PAX8 and NKX2-1/TTF1-dependent gene activation. Regulates the nuclear accumulation of SMADS and has a key role in coupling them to the transcriptional machinery such as the mediator complex. Regulates embryonic stem-cell self-renewal, promotes cell proliferation and epithelial-mesenchymal transition.[UniProtKB/Swiss-Prot Function]