

Product datasheet for **RG229915**

KIST (UHK1) (NM_144624) Human Tagged ORF Clone

Product data:

Product Type:	Expression Plasmids
Product Name:	KIST (UHK1) (NM_144624) Human Tagged ORF Clone
Tag:	TurboGFP
Symbol:	UHK1
Synonyms:	KIS; KIST; P-CIP2
Mammalian Cell Selection:	Neomycin
Vector:	pCMV6-AC-GFP (PS100010)
E. coli Selection:	Ampicillin (100 ug/mL)
ORF Nucleotide Sequence:	>RG229915 representing NM_144624 Red=Cloning site Blue=ORF Green=Tags(s)

TTTTGTAATACGACTCACTATAGGGCGGCCGGAATTCGTCGACTGGATCCGGTACCGAGGAGATCTGCC
GCC**CGATCGCC**

ATGGCGGGATCCGGCTGCGCCTGGGGCGCGGAGCCGCCGCTTTTCTGGAGGCCTTCGGGCGGCTGTGGC
AGGTACAGAGCCGTCTGGGTAGCGGCTCCTCCGCTCGGTGTATCGGGTTCGCTGCTGCGCAACCCTGG
CTCGCCCCCGGCGCCCTCAAGCAGTTCTTGCCGCCAGGAACCACGGGGCTGCGCCTCTGCCCGCAG
TATGGTTCCGCAAAGAGAGGGCGCGCTGGAACAGTTGCAGGGTCACAGAAACATCGTACTTTGTATG
GAGTGTTTACAATCCACTTTTCTCCAAATGTGCCATCACGCTGTCTGTTGCTTGAACCTCTGGATGTCAG
TGTTTCGGAATTGCTCTTATATCCAGTACCAGGGTTGTTCCATGTGGATGATACAGCATTGTGCCCGA
GATGTTTTGGAGGCCCTTCTTTCTTTCATCATGAGGGCTATGTCCATGCGGACCTCAAACCACGTAACA
TATTGTGGAGTGCAGAGAATGAATGTTTTAAACTCATTGACTTTGGACTTAGCTTCAAAGAAGGCAATCA
GGATGTAAGTATATTCAGACAGACGGGTATCGGGCTCCAGAAGCAGAATTGCAAAATGCTTGGCCAG
GCTGGCCTGCAGAGTGATACAGAATGTACCTCAGCTGTTGATCTGTGGAGCCTAGGAATCATTTTACTGG
AAATGTTCTCAGGAATGAACTGAAACATACAGTCAGATCTCAGGAATGGAAGGCAAACAGTTCTGCTAT
TATTGATCACATATTTGCCAGTAAAGCAGTGGTGAATGCCGAATCCAGCCTATCACCTAAGAGACCTT
ATCAAAGCATGCTTCATGATGATCCAAGCAGAAGAATTCCTGCTGAAATGGCATTGTGCAACCCATTCT
TTAGCATTCTTTTGGCCCTCATATTGAAGATCTGGTCATGCTTCCCACTCCAGTGCTAAGACTGCTGAA
TGTGCTGGATGATGATTATCTTGAGAATGAAGAGGAATATGAAGTCTTTGT

ACGCGTACGCGGCCGCTCGAG - GFP Tag - GTTTAA



[View online »](#)

Protein Sequence: >RG229915 representing NM_144624
 Red=Cloning site Green=Tags(s)

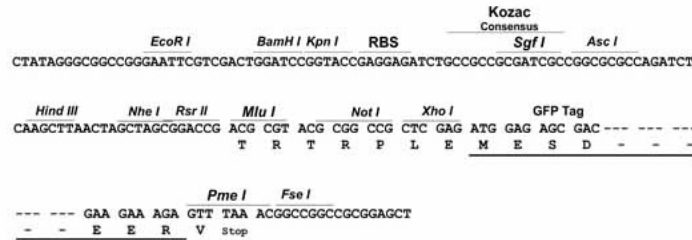
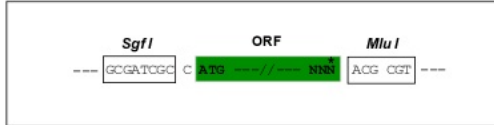
MAGSGCAWGAEPFRLEAFGRLLWVQVSRLLGSGSSASVYRVRCCGNPGSPPGALKQFLPPGTTGAAASAAE
 YGFRKERAALQLQGHRNIVTL YGVFTIHFSPNVPSRCLLLELLDVSVSELLLYSSHQGCSSMMMIQHCR
 DVLEALAFLLHHEGYVHADLKPRNILWSAENECFKLIDFGLSFKEGNQDVKIYQTDGYRAPEALQNCLAQ
 AGLQSDTECTSVDLWSLGIILLEMFSGMKPKHTVRSQEWKANSSAIIDHIFASKAVVNAAIIPAYHLRDL
 IKSMHLDDPSRRIPAEMALCSPFFSIPFAPHIEDLVMLPTPVLRLLNLVDDDDYLENEEEYEGLC

TRTRPLE - GFP Tag - V

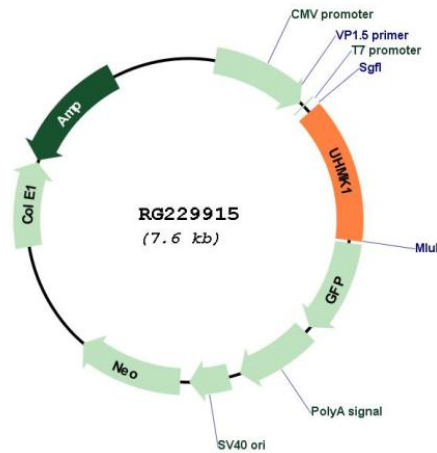
Restriction Sites: SgfI-MluI

Cloning Scheme:

Cloning sites used for ORF Shuttling:



Plasmid Map:



ACCN: NM_144624

ORF Size: 1032 bp

OTI Disclaimer:	The molecular sequence of this clone aligns with the gene accession number as a point of reference only. However, individual transcript sequences of the same gene can differ through naturally occurring variations (e.g. polymorphisms), each with its own valid existence. This clone is substantially in agreement with the reference, but a complete review of all prevailing variants is recommended prior to use. More info
OTI Annotation:	This clone was engineered to express the complete ORF with an expression tag. Expression varies depending on the nature of the gene.
Components:	The ORF clone is ion-exchange column purified and shipped in a 2D barcoded Matrix tube containing 10ug of transfection-ready, dried plasmid DNA (reconstitute with 100 ul of water).
Reconstitution Method:	<ol style="list-style-type: none">1. Centrifuge at 5,000xg for 5min.2. Carefully open the tube and add 100ul of sterile water to dissolve the DNA.3. Close the tube and incubate for 10 minutes at room temperature.4. Briefly vortex the tube and then do a quick spin (less than 5000xg) to concentrate the liquid at the bottom.5. Store the suspended plasmid at -20°C. The DNA is stable for at least one year from date of shipping when stored at -20°C.
RefSeq:	NM_144624.2 , NP_653225.2
RefSeq Size:	8446 bp
RefSeq ORF:	1035 bp
Locus ID:	127933
UniProt ID:	Q8TAS1
Cytogenetics:	1q23.3
Domains:	pkinase, TyrKc, S_TKc
Protein Families:	Druggable Genome, Protein Kinase
Gene Summary:	The gene encodes a serine/threonine protein kinase that promotes cell cycle progression through G1 by phosphorylation of the cyclin-dependent kinase inhibitor 1B (p27Kip1), which causes nuclear export and degradation. The encoded protein is also thought to function in the adult nervous system and the gene has been associated with schizophrenia. Alternative splicing results in multiple transcript variants. [provided by RefSeq, May 2010]