

Product datasheet for **RG229835**

FCRLM1 (FCRLA) (NM_001184867) Human Tagged ORF Clone

Product data:

Product Type:	Expression Plasmids
Product Name:	FCRLM1 (FCRLA) (NM_001184867) Human Tagged ORF Clone
Tag:	TurboGFP
Symbol:	FCRLA
Synonyms:	FCRL; FCRL1; FCRLb; FCRLc1; FCRLc2; FCRLd; FCRLe; FCRLM1; FCRLX; FCRX; FREB
Mammalian Cell Selection:	Neomycin
Vector:	pCMV6-AC-GFP (PS100010)
E. coli Selection:	Ampicillin (100 ug/mL)
ORF Nucleotide Sequence:	>RG229835 representing NM_001184867 Red=Cloning site Blue=ORF Green=Tags(s)

TTTTGTAATACGACTCACTATAGGGCGGCCGGAATTCGTCGACTGGATCCGGTACCGAGGAGATCTGCC
GCC**CGATCGCC**

ATGTTGAAGAAAATCAGTGTGGGGTTCAGGAGACCTAAACACAGTCACCATGAAGCTGGGCTGTGTCC
TCATGGCCTGGGCCCTACCTTTCCCTGGTGTGCTCTGGTGGCCAGATGCTACTGGCTGCCAGTTT
TGAGACGCTGCAGTGTGAGGGACCTGTCTGCACTGAGGAGAGCAGCTGCCACACGGAGGATGACTTGACT
GATGCAAGGGAAGCTGGCTTCCAGGTCAAGGCCTACACTTTCAGTGAACCCTTCCACCTGATTGTGTCT
ATGAAGTGTTCAGCGCAATTCTCAGAGCTGTACCCTCAGCTGAACCCCAAGCAGGAAGCCCCATGAC
CCTGAGTTGTGAGACAAAGTTGCCCTGCAGAGGTCAGCTGCCCGCTCCTCTTCTCCTTACAAGGAT
GGAAGGATAGTGCAAAGCAGGGGCTCTCCTCAGAATTCAGATCCCCACAGTTTCAAGATCACTCCG
GGTCATACTGGTGTGAGGCAGCCACTGAGGACAACCAAGTTTGGAAACAGAGCCCCCAGCTAGAGATCAG
AGTGCAGGGTGTCTCCAGCTCTGCTGCACCTCCACATGAATCCAGCTCCTCAGAAATCAGCTGTCCA
GGAAGTGTCTCCTGAGGAGGCCCTGGGCTCTGCCTCCGCCCAACCCATCTTCTGAGGATCCAGGCT
TTTCTTCTCCTCTGGGATGCCAGATCCTCATCTGTATCACCAGATGGGCCTTCTCTCAAACACATGCA
GGATGTGAGAGTCTCCTCGGTACCTGCTCATGGAGTTGAGGAATTATCTGGCCACCGGAAGCCTGGG
ACCACAAAGGCTACTGCTGAA

ACGCGTACGCGGCCGCTCGAG - GFP Tag - GTTTAA



[View online »](#)

Protein Sequence: >RG229835 representing NM_001184867
 Red=Cloning site Green=Tags(s)

MLKKISVGVAGDLNVTMKGCVLMAWALYL SLGVLWVAQMLLAASFETLQCEGPVCTEESSCHTEDDLT
 DAREAGFQVKAYTFSEPFHLIVSYELFPAPILRAVPSAEPQAGSPMTLSCQTKLPLQRSAARLLFSFYKD
 GRIVQSRGLSSEFQIPTASEDHSGSYWCEAATEDNQVWKQSPQLEIRVQGASSAAPTLPAPQKSAAP
 GTAPEEAPGPLPPPTPSSDPGFSSPLGMPDPHLYHQMGLLLKHMQDVRVLLGHLLMELRELSGHRKPG
 TTKATAE

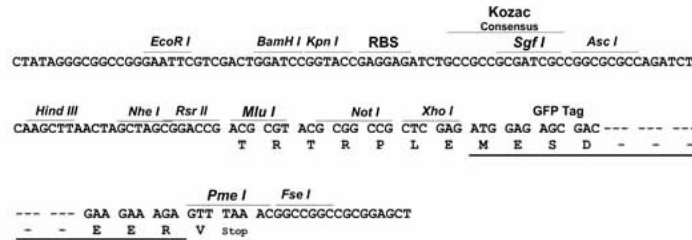
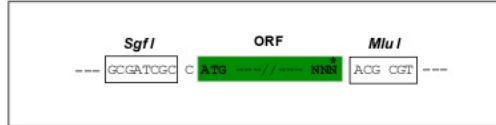
TRTRPLE - GFP Tag - V

Restriction Sites:

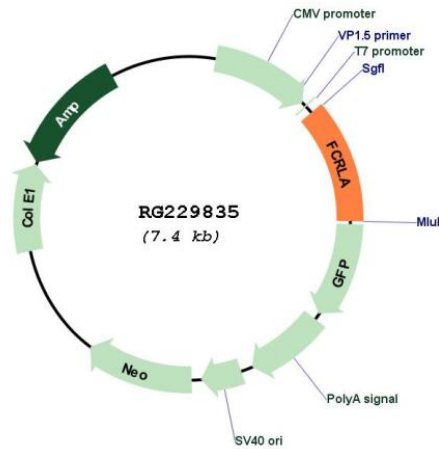
SgfI-MluI

Cloning Scheme:

Cloning sites used for ORF Shuttling:



Plasmid Map:



ACCN: NM_001184867

ORF Size: 861 bp

OTI Disclaimer:	The molecular sequence of this clone aligns with the gene accession number as a point of reference only. However, individual transcript sequences of the same gene can differ through naturally occurring variations (e.g. polymorphisms), each with its own valid existence. This clone is substantially in agreement with the reference, but a complete review of all prevailing variants is recommended prior to use. More info
OTI Annotation:	This clone was engineered to express the complete ORF with an expression tag. Expression varies depending on the nature of the gene.
Components:	The ORF clone is ion-exchange column purified and shipped in a 2D barcoded Matrix tube containing 10ug of transfection-ready, dried plasmid DNA (reconstitute with 100 ul of water).
Reconstitution Method:	<ol style="list-style-type: none">1. Centrifuge at 5,000xg for 5min.2. Carefully open the tube and add 100ul of sterile water to dissolve the DNA.3. Close the tube and incubate for 10 minutes at room temperature.4. Briefly vortex the tube and then do a quick spin (less than 5000xg) to concentrate the liquid at the bottom.5. Store the suspended plasmid at -20°C. The DNA is stable for at least one year from date of shipping when stored at -20°C.
RefSeq:	NM_001184867.1 , NP_001171796.1
RefSeq Size:	2090 bp
RefSeq ORF:	813 bp
Locus ID:	84824
UniProt ID:	Q7L513
Cytogenetics:	1q23.3
Protein Families:	Secreted Protein, Transmembrane
Gene Summary:	This gene encodes a protein similar to receptors for the Fc fragment of gamma immunoglobulin (IgG). These receptors, referred to as FCGRs, mediate the destruction of IgG-coated antigens and of cells induced by antibodies. This encoded protein is selectively expressed in B cells, and may be involved in their development. This protein may also be involved in the development of lymphomas. Multiple alternatively spliced transcript variants that encode different protein isoforms have been described for this gene. [provided by RefSeq, Aug 2011]