

Product datasheet for **RG229791**

FAM82A1 (RMDN2) (NM_001170793) Human Tagged ORF Clone

Product data:

Product Type:	Expression Plasmids
Product Name:	FAM82A1 (RMDN2) (NM_001170793) Human Tagged ORF Clone
Tag:	TurboGFP
Symbol:	RMDN2
Synonyms:	BLOCK18; FAM82A; FAM82A1; PRO34163; PYST9371; RMD-2; RMD2; RMD4
Mammalian Cell Selection:	Neomycin
Vector:	pCMV6-AC-GFP (PS100010)
E. coli Selection:	Ampicillin (100 ug/mL)
ORF Nucleotide Sequence:	>RG229791 representing NM_001170793 Red=Cloning site Blue=ORF Green=Tags(s)

TTTGTAAATACGACTCACTATAGGGCGGCCGGAATTCGTCGACTGGATCCGGTACCGAGGAGATCTGCC
 GCC**CGATCGCC**

ATGGGAAAGTGCTTAAGGTATATTACAGCTAATACTGACACAGAAGAACAGAGTTTTCCAGTCCCTAAGG
 CATTTAACACACGTGTAGAGGAATTAATTTAGATGTCCTTCTTCAGAAGGTAGATCATTTACGTATGAG
 TGAGTCTGGCAAGTCGGAGAGTTTTGAACTACTTCGTGACCACAAAGAAAAGTTTAGAGATGAAATAGAG
 TTTATGTGGCGATTGCTCGTGCTTATGGAGACATGTATGAAGTATCTACAAACACACAAGAAAAGAAAC
 ATTATGCTAATATTGAAAACTTTAAGTGAAAGAGCTATTAATAGAGCACCCATGAATGGACATTGTCA
 TCTGTGGTATGCAGTTTTGTGTGGCTATGTATCTGAGTTTGAGGGTTTACAAAACAAAATCAACTATGGG
 CACCTCTTCAAGGAACATCTAGATATAGCAATCAAACCTTTACCAGAGGAACCCCTTTCTATATTACCTCA
 AAGGGAGATACTGCTATACTGTCTCAAACTGAGCTGGATTGAGAAAAAATGGCTGCTACTCTGTTTGG
 AAAAATACCATCTTCAACTGTACAAGAAGCTTTACACAATTTCTTAAGGCTGAAGAACTATGCCCTGGT
 TATTCTAATCCCAATTACATGTACTTAGCAAAGTGTTATACTGATCTTGAGGAAAACAGAAATGCTTTGA
 AGTTCTGTAATTTGGCTTTATTGCTTCCTACTGTTACCAAAGAGGATAAAGAGGCACAGAAAGAGATGCA
 AAAAATAATGACTTCCTGAAGAGG

ACGCGTACGCGGCCGCTCGAG - GFP Tag - GTTTAA



[View online »](#)

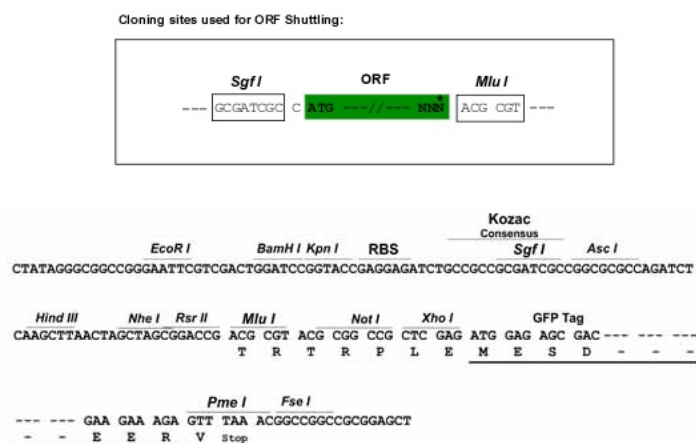
Protein Sequence: >RG229791 representing NM_001170793
 Red=Cloning site Green=Tags(s)

MGKCLRYITANTDTEEQSFPVPKAFNTRVEELNLDVLLQKVDHLRMSSESGKSEFELLRDHKEKFRDEIE
 FMWRFARAYGDMYELSTNTQEKHYANIGKTLSERAINRAPMNGHCHLWYAVLCGYVSEFEGQLQNKINYG
 HLFKEHLDIAIKLLPEEPFLYYLKGRYCYTVSKLSWIEKKMAATLFGKIPSSVQEAHLNHLKAEELCPG
 YSNPNMYLAKCYTDLEENQNALKFCNLALLPTVTKEDKEAQKEMQKIMTSLKR

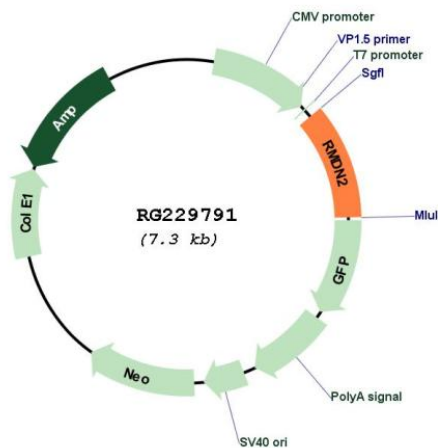
TRTRPLE – GFP Tag – V

Restriction Sites: SgfI-MluI

Cloning Scheme:



Plasmid Map:



ACCN: NM_001170793

ORF Size: 795 bp

OTI Disclaimer:	The molecular sequence of this clone aligns with the gene accession number as a point of reference only. However, individual transcript sequences of the same gene can differ through naturally occurring variations (e.g. polymorphisms), each with its own valid existence. This clone is substantially in agreement with the reference, but a complete review of all prevailing variants is recommended prior to use. More info
OTI Annotation:	This clone was engineered to express the complete ORF with an expression tag. Expression varies depending on the nature of the gene.
Components:	The ORF clone is ion-exchange column purified and shipped in a 2D barcoded Matrix tube containing 10ug of transfection-ready, dried plasmid DNA (reconstitute with 100 ul of water).
Reconstitution Method:	<ol style="list-style-type: none"> 1. Centrifuge at 5,000xg for 5min. 2. Carefully open the tube and add 100ul of sterile water to dissolve the DNA. 3. Close the tube and incubate for 10 minutes at room temperature. 4. Briefly vortex the tube and then do a quick spin (less than 5000xg) to concentrate the liquid at the bottom. 5. Store the suspended plasmid at -20°C. The DNA is stable for at least one year from date of shipping when stored at -20°C.
RefSeq:	NM_001170793.2
RefSeq Size:	1426 bp
RefSeq ORF:	798 bp
Locus ID:	151393
UniProt ID:	Q96LZ7
Cytogenetics:	2p22.2