

Product datasheet for **RG229754**

CCRK (CDK20) (NM_001170640) Human Tagged ORF Clone

Product data:

Product Type:	Expression Plasmids
Product Name:	CCRK (CDK20) (NM_001170640) Human Tagged ORF Clone
Tag:	TurboGFP
Symbol:	CDK20
Synonyms:	CCRK; CDCH; P42; PNQALRE
Mammalian Cell Selection:	Neomycin
Vector:	pCMV6-AC-GFP (PS100010)
E. coli Selection:	Ampicillin (100 ug/mL)
ORF Nucleotide Sequence:	>RG229754 representing NM_001170640 Red=Cloning site Blue=ORF Green=Tags(s)

TTTTGTAATACGACTCACTATAGGGCGCCGGGAATTCGTCGACTGGATCCGGTACCGAGGAGATCTGCC
GCC**CGATCGCC**

ATGGACCAGTACTGCATCCTGGGCCGCATCGGGGAGGGCGCCACGGCATCGTCTTCAAGGCCAAGCAGC
TGGAGACTGGCGAGATAGTTGCCCTCAAGAAGGTGGCCCTAAGGCGGTTGGAGGACGGCTTCCCTAACCA
GGCCCTGCGGGAGATTAAGGCTCTGCAGGAGATGGAGGACAATCAGTATGTGGTACAACCTGAAGGCTGTG
TCCCACACGGTGGAGGCTTTGTGCTGGCCTTTGAGTTCATGCTGTCGGATCTGGCCGAGGTGGTGCGCC
ATGCCAGAGGCCACTAGCCCAGGCACAGGTCAAGAGCTACCTGCAGATGCTGCTCAAGGGTGTGCGCCTT
CTGCCATGCCAACACATTGTACATCGGGACCTGAAACCTGCCAACCTGCTCATCAGCGCCTCAGGCCAG
CTCAAGATAGCGGACTTTGGCCTGGCTCGAGTCTTTTCCCAGACGGCAGCCGCCTCTACACACACCAGG
TGGCCACCAGGAGCTCACTGAGCTGCCGGACTACAACAAGATCTCCTTTAAGGAGCAGGTGCCCATGCC
CTGGAGGAGGTGCTGCTGACGTCTCTCCCAGGCATTGGATCTGCTGGGTCAATTCTTCTCTACCCCTC
CTCACCAGCGCATCGCAGCTTCCAAGGCTCTCCTCCATCAGTACTTCTTACAGCTCCCTGCGCTGCCCA
TCCATCTGAGCTGCCGATTCTCAGCGTC

ACGCGTACGCGGCCGCTCGAG - GFP Tag - GTTTAA



[View online »](#)

Protein Sequence: >RG229754 representing NM_001170640
Red=Cloning site Green=Tags(s)

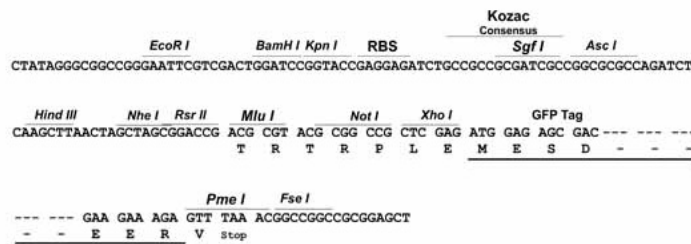
MDQYCILGRIGEGAHGIVFKAKHVETGEIVALKKVALRRLEDGFPNQALREIKALQEMEDNQYVVQLKAV
 FPHGGGFVLAFEFMLSDLAEVVRHAQRPLAQAQVKSYLQMLLKGVAFCHANNIVHRDLKPANLLISASGQ
 LKIADFGLARVSPDGSRLYTHQVATRSSLSCRTTTRSPLRSRCPWRRCCLTSLPRHWICWVNSFSTL
 LTSASQLPRLSSISTSSQLPCLPIHLSCRFLSV

TRTRPLE - GFP Tag - V

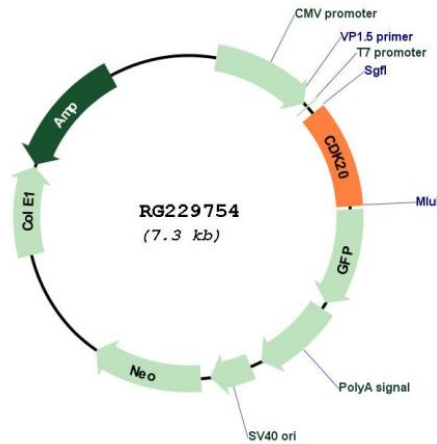
Restriction Sites: Sgfl-MluI

Cloning Scheme:

Cloning sites used for ORF Shutting:



Plasmid Map:



ACCN: NM_001170640

ORF Size: 729 bp

OTI Disclaimer:	The molecular sequence of this clone aligns with the gene accession number as a point of reference only. However, individual transcript sequences of the same gene can differ through naturally occurring variations (e.g. polymorphisms), each with its own valid existence. This clone is substantially in agreement with the reference, but a complete review of all prevailing variants is recommended prior to use. More info
OTI Annotation:	This clone was engineered to express the complete ORF with an expression tag. Expression varies depending on the nature of the gene.
Components:	The ORF clone is ion-exchange column purified and shipped in a 2D barcoded Matrix tube containing 10ug of transfection-ready, dried plasmid DNA (reconstitute with 100 ul of water).
Reconstitution Method:	<ol style="list-style-type: none">1. Centrifuge at 5,000xg for 5min.2. Carefully open the tube and add 100ul of sterile water to dissolve the DNA.3. Close the tube and incubate for 10 minutes at room temperature.4. Briefly vortex the tube and then do a quick spin (less than 5000xg) to concentrate the liquid at the bottom.5. Store the suspended plasmid at -20°C. The DNA is stable for at least one year from date of shipping when stored at -20°C.
RefSeq:	NM_001170640.1 , NP_001164111.1
RefSeq Size:	2219 bp
RefSeq ORF:	732 bp
Locus ID:	23552
UniProt ID:	Q8IZL9
Cytogenetics:	9q22.1
Protein Families:	Druggable Genome, Protein Kinase
Gene Summary:	The protein encoded by this gene contains a kinase domain most closely related to the cyclin-dependent protein kinases. The encoded kinase may activate cyclin-dependent kinase 2 and is involved in cell growth. Alternatively spliced transcript variants encoding distinct isoforms have been reported. [provided by RefSeq, Dec 2009]