

Product datasheet for **RG229742**

SCP3 (SYCP3) (NM_001177948) Human Tagged ORF Clone

Product data:

Product Type:	Expression Plasmids
Product Name:	SCP3 (SYCP3) (NM_001177948) Human Tagged ORF Clone
Tag:	TurboGFP
Symbol:	SYCP3
Synonyms:	COR1; RPRGL4; SCP3; SPGF4
Mammalian Cell Selection:	Neomycin
Vector:	pCMV6-AC-GFP (PS100010)
E. coli Selection:	Ampicillin (100 ug/mL)
ORF Nucleotide Sequence:	>RG229742 representing NM_001177948 Red=Cloning site Blue=ORF Green=Tags(s)

TTTTGTAATACGACTCACTATAGGGCGGCCGGAATTCGTCGACTGGATCCGGTACCGAGGAGATCTGCC
GCC**CGATCGCC**

ATGGTGTCTCCGAAAAAAGTATTCCAGGAAATCTGGGAAGCCGTCTGTGGAAGATCAGTTTACGAGAG
CCTATGACTTTGAGACTGAAGATAAGAAAGATCTGAGTGGATCAGAGGAAGATGTTATTGAAGGGAAGAC
TGCAGTCATTGAGAAACGTAGGAAGAAAAGGTCTTCTGCAGGAGTAGTTGAAGATATGGGGGTGAAGTG
CAGAATATGCTGGAAGGAGTTGGAGTTGACATTAACAAGGCTCTTCTTGCCAAGAGAAAAGAGACTAGAAA
TGTATACCAAGGCTTCTCTCAAACTAGTAACCAAGAAATGAACATGTTTGGAAAACACAACAAGATCA
AAGGCAGAAGCTTAACCAAGAATATTCTCAGCAGTTTCTGACTTTGTTTCAGCAGTGGGATTTAGATATG
CAGAAAAGCTGAGGAACAAGAAGAAAAAATCTTAATATGTTTCGACAGCAACAAAAGATTCTTCAACAAT
CTAGAATTGTTTCAGAGCCAGAGATTGAAAACAATTAACAGTTATATGAGCAGTTCATAAAGAGTATGGA
AGAGTTGGAGAAGAATCATGATAATCTACTTACTGGTGCACAAAATGAATTTAAAAAAGAAATGGCTATG
TTGCAAAAAAATTATGATGAAAACCTCAGCAGCAAGAGATAGCAAGTGTTCGGAAGTCTCTTCAATCCA
TGTTATTC

ACGCGTACGCGGCCGCTCGAG - GFP Tag - GTTTAA



[View online »](#)

Protein Sequence: >RG229742 representing NM_001177948
 Red=Cloning site Green=Tags(s)

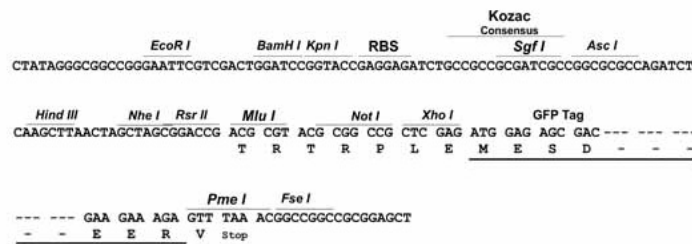
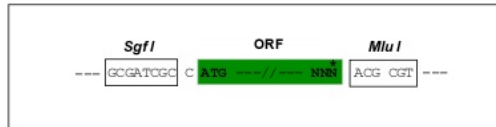
MVSSGKKYSRKS GKPSVEDQFTRAYDFETEDKKDL SGSEEDVIEGKTAVIEKRRKKRSSAGVVEDMGGEV
 QNMLEGVGVDINKALLAKRKRLEMYTKASLKTSNQKIEHVWKTQQDQRQKLNQEYSQQFLTLFQQWDLDM
 QKAEEQEELNMFRQQKILQQSRIVQSQRKLIKQLYEQFIKSMEELEKNHDNLLTGAQNEFKKEMAM
 LQKKIMMETQQEIASVRKSLQSMFLF

TRTRPLE - GFP Tag - V

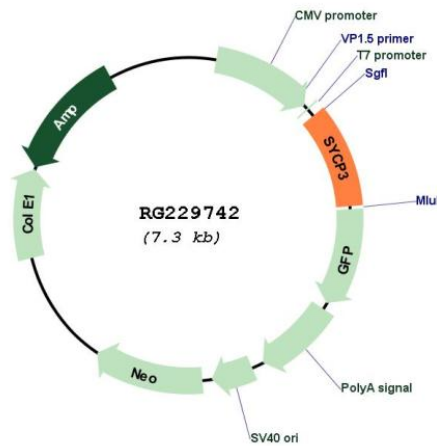
Restriction Sites: SgfI-MluI

Cloning Scheme:

Cloning sites used for ORF Shutting:



Plasmid Map:



ACCN: NM_001177948

ORF Size: 708 bp

OTI Disclaimer:	The molecular sequence of this clone aligns with the gene accession number as a point of reference only. However, individual transcript sequences of the same gene can differ through naturally occurring variations (e.g. polymorphisms), each with its own valid existence. This clone is substantially in agreement with the reference, but a complete review of all prevailing variants is recommended prior to use. More info
OTI Annotation:	This clone was engineered to express the complete ORF with an expression tag. Expression varies depending on the nature of the gene.
Components:	The ORF clone is ion-exchange column purified and shipped in a 2D barcoded Matrix tube containing 10ug of transfection-ready, dried plasmid DNA (reconstitute with 100 ul of water).
Reconstitution Method:	<ol style="list-style-type: none">1. Centrifuge at 5,000xg for 5min.2. Carefully open the tube and add 100ul of sterile water to dissolve the DNA.3. Close the tube and incubate for 10 minutes at room temperature.4. Briefly vortex the tube and then do a quick spin (less than 5000xg) to concentrate the liquid at the bottom.5. Store the suspended plasmid at -20°C. The DNA is stable for at least one year from date of shipping when stored at -20°C.
RefSeq:	NM_001177948.1 , NP_001171419.1
RefSeq Size:	1119 bp
RefSeq ORF:	711 bp
Locus ID:	50511
UniProt ID:	Q8IZU3
Cytogenetics:	12q23.2
Gene Summary:	This gene encodes an essential structural component of the synaptonemal complex. This complex is involved in synapsis, recombination and segregation of meiotic chromosomes. Mutations in this gene are associated with azoospermia in males and susceptibility to pregnancy loss in females. Alternate splicing results in multiple transcript variants that encode the same protein. [provided by RefSeq, May 2010]