

## Product datasheet for **RG229736**

### SCAMP5 (NM\_001178112) Human Tagged ORF Clone

#### Product data:

**Product Type:** Expression Plasmids  
**Product Name:** SCAMP5 (NM\_001178112) Human Tagged ORF Clone  
**Tag:** TurboGFP  
**Symbol:** SCAMP5  
**Mammalian Cell Selection:** Neomycin  
**Vector:** pCMV6-AC-GFP (PS100010)  
**E. coli Selection:** Ampicillin (100 ug/mL)  
**ORF Nucleotide Sequence:** >RG229736 representing NM\_001178112  
Red=Cloning site Blue=ORF Green=Tags(s)

TTTTGTAATACGACTCACTATAGGGCGGCCGGAATTCGTCGACTGGATCCGGTACCGAGGAGATCTGCC  
GCCCGATCGCC

ATGGCAGAGAAAGTGAACAACCTCCACCATTGCCAAATTCATCCCGCTGAAGCCATGTTTCTACCAAG  
 ACTTCGAGGCAGATATTCCTCCCGCATGTGAGCATGACCAAGCGCCTCTACTACCTCTGGATGTTGAA  
 CAGCGTCACGCTGGCCGTGAACCTGGTGGGCTGTCTCGCGTGGCTGATCGGAGGCGGGGAGCCACCAAC  
 TTTGGCCTCGCCTTTCTCTGGCTCATCCTCTTCACACCCTGCTCTACGCTCTGCTGGTTTCGGCCCATTT  
 ACAAGGCCTTCAAGACTGACAGCTCCTTCAGTTTCATGGCATTCTTTACCTTCATGGCTCAGTTGGT  
 CATCAGCATCATCCAGGCGTGGGCATCCAGGCTGGGGCGTCTGCGGCTGGATTGCTACCATCTCCTTC  
 TTCGGAACGAACATTGGCTCGGCGGTGGTATGCTAATCCCACTGTCATGTTTACAGTATGGCCGCT  
 TTTCTTCATCGCCCTCAGCATGGTTCATAAAATTTACCGGGGAAGTGGGGGAGTTTCAGCAAAGCTCA  
 GGAGGAGTGGACCACAGGGCCTGGAAGAATCCACATGTGCAGCAGGCAGCCAGAACGCAGCCATGGGG  
 GCAGCCCAGGGTGCCATGAATCAGCCTCAGACTCAGTATTCGCCACCCCAATTACACGTACTCCAATG  
 AGATG

ACGCGTACGCGGCCGCTCGAG - GFP Tag - GTTTAA

**Protein Sequence:** >RG229736 representing NM\_001178112  
Red=Cloning site Green=Tags(s)

MAEKVNNFPPLPKFIPLKPCFYQDFEADIPPQHVSMTKRLYYLWMLNSVTLAVNLVGCLAWLIGGGGATN  
 FGLAFLWLILFTPCSYVCWFRPIYKAFKTDSSFSMAFFFTFMAQLVISIIQAVGIPGWVCGWIATISF  
 FGTNIGSAVVMLIPTVMFTVMAVFSFIALSMVHKFYRSGGSFSKAQEEWTTGAWKNPHVQQAQAAMG  
 AAQGAMNPQTQYSATPNYYSNEM

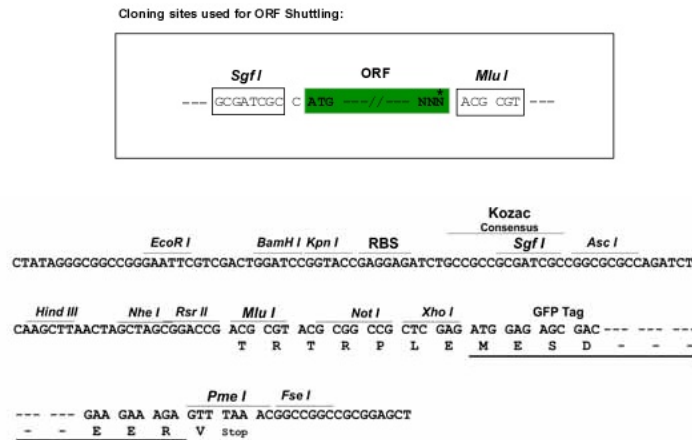
TRTRPLE - GFP Tag - V



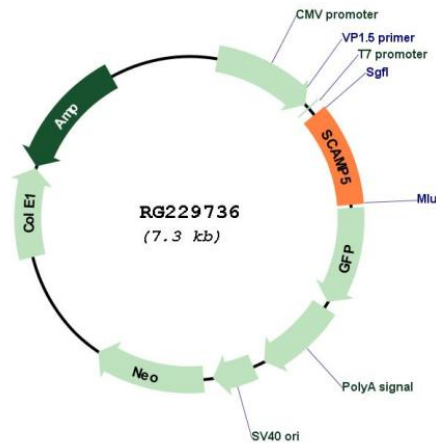
[View online »](#)

Restriction Sites: SgfI-MluI

Cloning Scheme:



Plasmid Map:



ACCN: NM\_001178112

ORF Size: 705 bp

OTI Disclaimer: The molecular sequence of this clone aligns with the gene accession number as a point of reference only. However, individual transcript sequences of the same gene can differ through naturally occurring variations (e.g. polymorphisms), each with its own valid existence. This clone is substantially in agreement with the reference, but a complete review of all prevailing variants is recommended prior to use. [More info](#)

OTI Annotation: This clone was engineered to express the complete ORF with an expression tag. Expression varies depending on the nature of the gene.

|                               |   |
|-------------------------------|---|
| <b>Components:</b>            | The ORF clone is ion-exchange column purified and shipped in a 2D barcoded Matrix tube containing 10ug of transfection-ready, dried plasmid DNA (reconstitute with 100 ul of water).  |
| <b>Reconstitution Method:</b> | <ol style="list-style-type: none"><li>1. Centrifuge at 5,000xg for 5min.</li><li>2. Carefully open the tube and add 100ul of sterile water to dissolve the DNA.</li><li>3. Close the tube and incubate for 10 minutes at room temperature.</li><li>4. Briefly vortex the tube and then do a quick spin (less than 5000xg) to concentrate the liquid at the bottom.</li><li>5. Store the suspended plasmid at -20°C. The DNA is stable for at least one year from date of shipping when stored at -20°C.</li></ol> |
| <b>RefSeq:</b>                | <u>NM_001178112.2</u>   |
| <b>RefSeq Size:</b>           | 3483 bp   |
| <b>RefSeq ORF:</b>            | 708 bp  |
| <b>Locus ID:</b>              | 192683  |
| <b>UniProt ID:</b>            | <u>Q8TAC9</u>   |
| <b>Cytogenetics:</b>          | 15q24.2   |
| <b>Protein Families:</b>      | Secreted Protein, Transmembrane   |
| <b>Gene Summary:</b>          | Required for the calcium-dependent exocytosis of signal sequence-containing cytokines such as CCL5. Probably acts in cooperation with the SNARE machinery. May play a role in accumulation of expanded polyglutamine (polyQ) protein huntingtin (HTT) in case of endoplasmic reticulum stress by inhibiting the endocytosis pathway.[UniProtKB/Swiss-Prot Function]   |