

Product datasheet for **RG229725**

DMAC2 (NM_001167871) Human Tagged ORF Clone

Product data:

Product Type:	Expression Plasmids
Product Name:	DMAC2 (NM_001167871) Human Tagged ORF Clone
Tag:	TurboGFP
Symbol:	DMAC2
Synonyms:	ATP5SL
Mammalian Cell Selection:	Neomycin
Vector:	pCMV6-AC-GFP (PS100010)
E. coli Selection:	Ampicillin (100 ug/mL)
ORF Nucleotide Sequence:	>RG229725 representing NM_001167871 Red=Cloning site Blue=ORF Green=Tags(s)

TTTTGTAATACGACTCACTATAGGGCGCCGGAATTCGTCGACTGGATCCGGTACCGAGGAGATCTGCC
GCC**CGATCGCC**

ATGGCGGCTCCCTGGGCGTCCCTGCGCCTGGTCGCCCCATGTGGAATGGGCGTATCAGGGGCATCCATC
GCCTGGGTGCGGCAGTGGCCCCAGAGGGCAATCAGAAGAAGAAAAGGACAATACTCCAGTTCCTGACCAA
CTATTTCTACGATGTGGAGGCTCTGAGGGATTACTTGCTCAAAGGGAGATGTACAAGGTGCATGAGAAA
AATCGGTTTCGAGACAAGGAGTGGATCAGGCCAGATAAGTATGGCCATTTCTCTCAGGAGTTCTGGAATT
TCTGTGAAGTGCCTGTGAAGCTGTGGATGCCGGTGACTGTGACATCAACTACGAGGGCCTGGATAACCT
CCTCCGCCTGAAGGAGCTCCAGTCTTGTGCGTGCAGCGCTGCTGCCACGTGGACGACTGGTGTCTCAGC
CGCCTTACCCACTGGCCGACTCGTTGCAGGAGCTCTCGTGGCCGTTGCCCCCGCATCTCCGAACGGG
GCCTCGCCTGCCTCCACCACCTCCAGAACCTCCGCAGGCTGGACATCTCGGACCTCCCTGCCGTGTCCAA
CCCTGGCCTCACTCAGATATTGGTGGAGGAGATGCTGCCCAATTGCGAGGTTGTGGGAGTGCAGCTGGGCT
GAGGGCCTGAAGTCAGGGCCGGAGGAGCAGCCTCGGGACACAGCCAGCCCTGTCCCTGCC

ACGCGTACGCGGCCGCTCGAG - GFP Tag - GTTTAA



[View online »](#)

Protein Sequence: >RG229725 representing NM_001167871
Red=Cloning site Green=Tags(s)

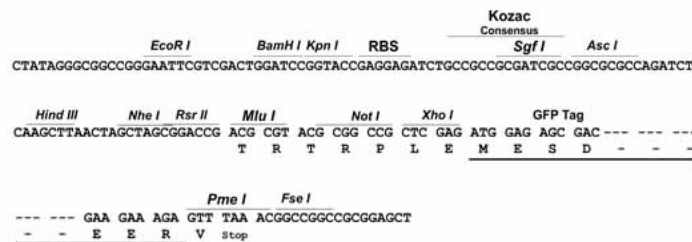
MAAPWASLRLVAPMWNIRIRGIHRLGAAVAPEGNQKKRRTILQFLTNYFYDVEALRDYLLQREMYKVHEK
 NRFRDKEWIRPKYGHFSQEFWNFCEVPVEAVDAGDCDINYEGLDNLLRLKELQSLSLQRCCHVDDWCLS
 RLYPLADSLQELSLAGCPRI SERGLACLHHLQNLRLDISDLPVAVSNPGLTQILVEEMLPNCEVGVGDWA
 EGLKSGPEEQPRDTASPVPA

TRTRPLE - GFP Tag - V

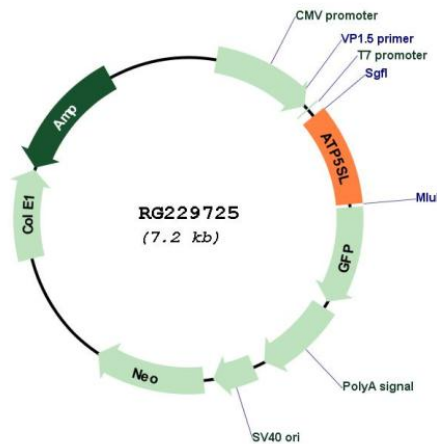
Restriction Sites: SgfI-MluI

Cloning Scheme:

Cloning sites used for ORF Shuttling:



Plasmid Map:



ACCN: NM_001167871

ORF Size: 690 bp

OTI Disclaimer:	The molecular sequence of this clone aligns with the gene accession number as a point of reference only. However, individual transcript sequences of the same gene can differ through naturally occurring variations (e.g. polymorphisms), each with its own valid existence. This clone is substantially in agreement with the reference, but a complete review of all prevailing variants is recommended prior to use. More info
OTI Annotation:	This clone was engineered to express the complete ORF with an expression tag. Expression varies depending on the nature of the gene.
Components:	The ORF clone is ion-exchange column purified and shipped in a 2D barcoded Matrix tube containing 10ug of transfection-ready, dried plasmid DNA (reconstitute with 100 ul of water).
Reconstitution Method:	<ol style="list-style-type: none">1. Centrifuge at 5,000xg for 5min.2. Carefully open the tube and add 100ul of sterile water to dissolve the DNA.3. Close the tube and incubate for 10 minutes at room temperature.4. Briefly vortex the tube and then do a quick spin (less than 5000xg) to concentrate the liquid at the bottom.5. Store the suspended plasmid at -20°C. The DNA is stable for at least one year from date of shipping when stored at -20°C.
RefSeq:	NM_001167871.2
RefSeq Size:	1655 bp
RefSeq ORF:	693 bp
Locus ID:	55101
UniProt ID:	Q9NW81
Cytogenetics:	19q13.2
Gene Summary:	Required for the assembly of the mitochondrial NADH:ubiquinone oxidoreductase complex (complex I). Involved in the assembly of the distal region of complex I.[UniProtKB/Swiss-Prot Function]