

Product datasheet for **RG229711**

Aquaporin 1 (AQP1) (NM_001185061) Human Tagged ORF Clone

Product data:

Product Type:	Expression Plasmids
Product Name:	Aquaporin 1 (AQP1) (NM_001185061) Human Tagged ORF Clone
Tag:	TurboGFP
Symbol:	Aquaporin 1
Synonyms:	AQP-CHIP; CHIP28; CO
Mammalian Cell Selection:	Neomycin
Vector:	pCMV6-AC-GFP (PS100010)
E. coli Selection:	Ampicillin (100 ug/mL)
ORF Nucleotide Sequence:	>RG229711 representing NM_001185061 Red=Cloning site Blue=ORF Green=Tags(s)

TTTTGTAATACGACTCACTATAGGGCGGCCGGAATTCGTCGACTGGATCCGGTACCGAGGAGATCTGCC
GCC**CGATCGCC**

ATGTTCTGGACTTTTGGGTATGAAGCCGTGTCCCCTGCTGGGCCTTCCACCTTTTGCATCTCTTCTCC
TAGGAGTGCTCCTGACCATCACCTTCATGCCTGGGGCTCGCCCCTTGCCTCTGGTCTTGGTACCCAGAA
TACCCTGGCCTGGATGCAGCTGGATGCAAAGGCCAGCTCACCCAGGCCTCTCCAGCTTCTAGGCAGA
GTGGGGCCTGGTCTAGGCAGCTGGCTGATGGTGTGAAGTCCGGCCAGGGCCTGGGCATCGAGATCATCG
GGACCCTCCAGCTGGTGCTATGCGTGTGGCTACTACCGACCGAGGCGCCGTGACCTTGGTGGCTCAGC
CCCCCTTGCCATCGGCCTCTCTGTAGCCCTTGGACACCTCCTGGCTATTGACTACACTGGCTGTGGGATT
AACCCCTGCTCGGTCCCTTTGGCTCCGCGGTGATCACACAACTTCAAGCAACCACTGGATTTTCTGGGTGG
GGCCATTCATCGGGGGAGCCCTGGCTGTACTCATCTACGACTTCATCCTGGCCCCACGCAGCAGTGACCT
CACAGACCGCGTGAAGGTGTGGACCAGCGGCCAGGTGGAGGAGTATGACCTGGATGCCGACGACATCAAC
TCCAGGGTGGAGATGAAGCCAAA

ACGCGTACGCGGGCCGCTCGAG - GFP Tag - GTTTAA



[View online »](#)

Protein Sequence: >RG229711 representing NM_001185061
 Red=Cloning site Green=Tags(s)

MFWTFGYEAVSPAGPSHLFASLLLVLLTITFMPGARPLPLVLPQNTLAWMQLDAKAPAHPRPLQLLGR
 VGPGSRQLADGVNSGQGLGIEIIGTLQLVLCVLATDTRRRDLGGSAPLAIGLSVALGHLLAIDYTGCGI
 NPARSFGSAVITHNFSNHWIFWVGPFIGGALAVLIYDFILAPRSSDLTDRVKVWTSQGQVEEYDLADADDIN
 SRVEMKPK

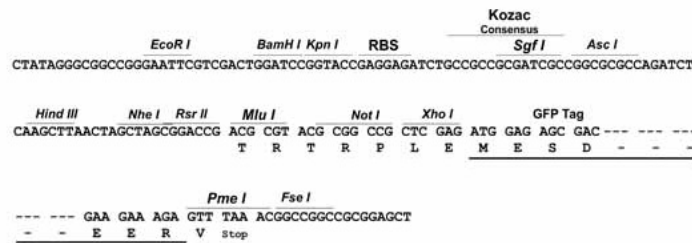
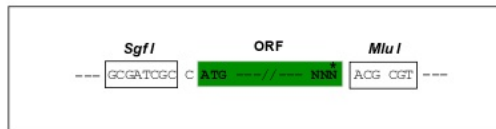
TRTRPLE - GFP Tag - V

Chromatograms: https://cdn.origene.com/chromatograms/ja1796_g05.zip

Restriction Sites: SgfI-MluI

Cloning Scheme:

Cloning sites used for ORF Shuttling:



ACCN: NM_001185061

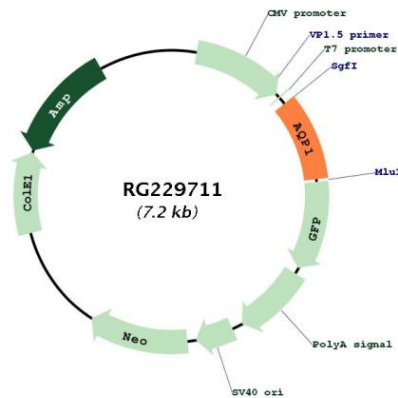
ORF Size: 654 bp

OTI Disclaimer: Due to the inherent nature of this plasmid, standard methods to replicate additional amounts of DNA in E. coli are highly likely to result in mutations and/or rearrangements. Therefore, OriGene does not guarantee the capability to replicate this plasmid DNA. Additional amounts of DNA can be purchased from OriGene with batch-specific, full-sequence verification at a reduced cost. Please contact our customer care team at custsupport@origene.com or by calling 301.340.3188 option 3 for pricing and delivery.

The molecular sequence of this clone aligns with the gene accession number as a point of reference only. However, individual transcript sequences of the same gene can differ through naturally occurring variations (e.g. polymorphisms), each with its own valid existence. This clone is substantially in agreement with the reference, but a complete review of all prevailing variants is recommended prior to use. [More info](#)

OTI Annotation: This clone was engineered to express the complete ORF with an expression tag. Expression varies depending on the nature of the gene.

Components:	The ORF clone is ion-exchange column purified and shipped in a 2D barcoded Matrix tube containing 10ug of transfection-ready, dried plasmid DNA (reconstitute with 100 ul of water).
Reconstitution Method:	<ol style="list-style-type: none"> 1. Centrifuge at 5,000xg for 5min. 2. Carefully open the tube and add 100ul of sterile water to dissolve the DNA. 3. Close the tube and incubate for 10 minutes at room temperature. 4. Briefly vortex the tube and then do a quick spin (less than 5000xg) to concentrate the liquid at the bottom. 5. Store the suspended plasmid at -20°C. The DNA is stable for at least one year from date of shipping when stored at -20°C.
RefSeq:	<u>NM_001185061.1, NP_001171990.1</u>
RefSeq Size:	2662 bp
RefSeq ORF:	657 bp
Locus ID:	358
Cytogenetics:	7p14.3
Protein Families:	Druggable Genome, Ion Channels: Other, Transmembrane
Gene Summary:	This gene encodes a small integral membrane protein with six bilayer spanning domains that functions as a water channel protein. This protein permits passive transport of water along an osmotic gradient. This gene is a possible candidate for disorders involving imbalance in ocular fluid movement. [provided by RefSeq, Aug 2016]

Product images:


Circular map for RG229711