

Product datasheet for **RG229645**

HDHD1A (PUDP) (NM_001178136) Human Tagged ORF Clone

Product data:

Product Type: Expression Plasmids
Product Name: HDHD1A (PUDP) (NM_001178136) Human Tagged ORF Clone
Tag: TurboGFP
Symbol: PUDP
Synonyms: DXF68S1E; FAM16AX; GS1; HDHD1; HDHD1A
Mammalian Cell Selection: Neomycin
Vector: pCMV6-AC-GFP (PS100010)
E. coli Selection: Ampicillin (100 ug/mL)
ORF Nucleotide Sequence: >RG229645 representing NM_001178136
Red=Cloning site Blue=ORF Green=Tags(s)

TTTTGTAATACGACTCACTATAGGGCGGCCGGAATTCGTCGACTGGATCCGGTACCGAGGAGATCTGCC
GCC**CGATCGCC**

ATGGCGCGCCCCCGCAGCCCGTACCCACCTCATCTTTGACATGGACGGACTTCTTCTGGATACTGAAC
GGCTGTATTCAGTGGTGTTC AAGAAATATGTAATCGCTATGACAAGAAATACAGCTGGGATGTAAGTC
CCTGGTTATGGGGCGGAGAACTCATCCACCTGCGGAAACATGGCATCCCCTTGCACTGGCCACC
AGCTCGGGTCCGCGTCTTCGATATGAAGACAAGCCGCCACAAGGAGTCTTCAGTTGTTTTCCACA
TTGTGCTGGGAGATGACCCGAAGTGCAGCATGGCAAGCCAGACCCGGACATCTTCTAGCTTGCCAA
GAGTTTCTCCCCCTCTGCTATGGAGAAGTGCCTTGTCTTTGAAGATGCTCCCAATGGGTGGAGCGG
GCCCTGGCAGCTGGGATGCAGGTGGTCATGGTTCTGACGAACTTGAGCCGAGATCTGACAACAAGG
CCACCCTGGTGTGAATCCCTGCAGGACTTCCAGCCGAGCTGTTTGGTTTGCCTCTATGAG

ACGCGTACGCGGCCGCTCGAG - GFP Tag - GTTTAA

Protein Sequence: >RG229645 representing NM_001178136
Red=Cloning site Green=Tags(s)

MAAPPQPVTHLIFDMDGLLLDTERLYSVVFQEICNRYDKKYSWDVKSLVMGAEKLIHRLRKHGIPFALAT
SSGSASFDMKTSRHKFFSLFSHIVLGGDPEVQHGKPPDIIFLACAKRFSPPPAMEKCLVFEDAPNGVEA
ALAAGMQVVMVPDGNLSRDLTTKATLVLSLQDFQPELFGPLPSYE

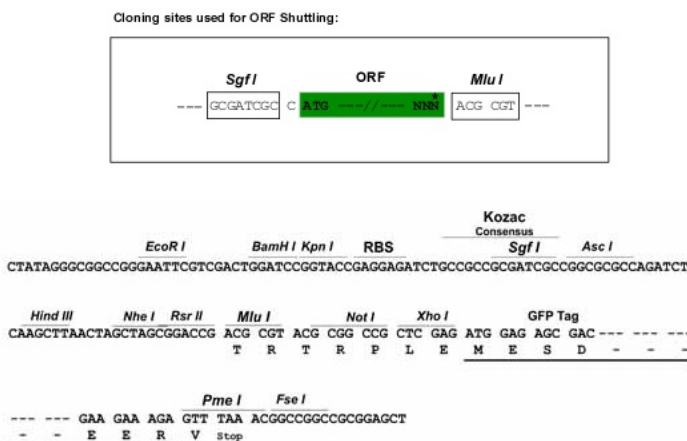
TRTRPLE - GFP Tag - V

Restriction Sites: Sgfl-MluI

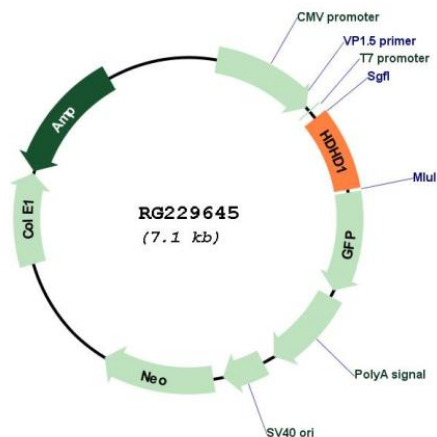


[View online »](#)

Cloning Scheme:



Plasmid Map:



ACCN: NM_001178136

ORF Size: 555 bp

OTI Disclaimer: The molecular sequence of this clone aligns with the gene accession number as a point of reference only. However, individual transcript sequences of the same gene can differ through naturally occurring variations (e.g. polymorphisms), each with its own valid existence. This clone is substantially in agreement with the reference, but a complete review of all prevailing variants is recommended prior to use. [More info](#)

OTI Annotation: This clone was engineered to express the complete ORF with an expression tag. Expression varies depending on the nature of the gene.

Components:	The ORF clone is ion-exchange column purified and shipped in a 2D barcoded Matrix tube containing 10ug of transfection-ready, dried plasmid DNA (reconstitute with 100 ul of water).
Reconstitution Method:	<ol style="list-style-type: none">1. Centrifuge at 5,000xg for 5min.2. Carefully open the tube and add 100ul of sterile water to dissolve the DNA.3. Close the tube and incubate for 10 minutes at room temperature.4. Briefly vortex the tube and then do a quick spin (less than 5000xg) to concentrate the liquid at the bottom.5. Store the suspended plasmid at -20°C. The DNA is stable for at least one year from date of shipping when stored at -20°C.
RefSeq:	<u>NM_001178136.2</u>
RefSeq Size:	2026 bp
RefSeq ORF:	558 bp
Locus ID:	8226
UniProt ID:	<u>Q08623</u>
Cytogenetics:	Xp22.31
Gene Summary:	This gene encodes a member of the haloacid dehalogenase-like (HAD) hydrolase superfamily. The encoded protein has no known biological function. This gene has a pseudogene on chromosome 1. Multiple alternatively spliced transcript variants encoding different isoforms have been identified. [provided by RefSeq, Jul 2010]