

Product datasheet for **RG229621**

PNPLA4 (NM_001172672) Human Tagged ORF Clone

Product data:

Product Type: Expression Plasmids
Product Name: PNPLA4 (NM_001172672) Human Tagged ORF Clone
Tag: TurboGFP
Symbol: PNPLA4
Synonyms: DXS1283E; GS2; iPLA2eta
Mammalian Cell Selection: Neomycin
Vector: pCMV6-AC-GFP (PS100010)
E. coli Selection: Ampicillin (100 ug/mL)
ORF Nucleotide Sequence: >RG229621 representing NM_001172672
 Red=Cloning site Blue=ORF Green=Tags(s)

TTTTGTAATACGACTCACTATAGGGCGGCCGGAATTCGTCGACTGGATCCGGTACCGAGGAGATCTGCC
 GCC**CGATCGCC**

ATGGCCCGACTAAGAAGTGGGATGGAGTCGATTCTTCTCCAGCGCTCACGAGCTGGCCAGAACCGAC
 TGCACGTATCCATCACCAACGCCAAAACAGAGAAAATCACTTAGTCTCCACTTTTTCTCCAGGGAGGA
 CCTCATTAAAGTCTCTAGCCAGCAGTTTTGTGCCATTTATGCAGGACTGAAGCTAGTGAATACAAA
 GGGCAGAAGTGGGTGGACGGAGGCCTACCAACGCTCTCCCATCTGCCGTCGGCCGGACAGTAACCA
 TCTCCCTTTCAGTGGACGACTGGACATCTCCCGCAGGACAAAGGCAGCTAGATCTGTATGTTAATAT
 CGCAAGCAGGATATCATGTTGTCCCTGGCAAACCTGGTGGAGACTCAACCAAGCCCTTTTCCCAAGC
 AAGAGGAAAATGGAATCTTTGTATCAGTGTGGTTTTGATGACACTGTTAAGTTTTACTTAAGAAAATT
 GTTTTGAA

ACGCGTACGCGGCCGCTCGAG - GFP Tag - GTTTAA

Protein Sequence: >RG229621 representing NM_001172672
 Red=Cloning site Green=Tags(s)

MARLRSGMESILPPSAHELAQNRLHVSITNAKTRENHLVSTFSSREDLIKVLLASSFVPIYAGLKLVEYK
 GQKQWVDGGLTNALPILPVGRVTIISPFSGRLDISPQDKGQLDLYVNIQKQDIMLSLANLVRNLQALFPPS
 KRKMESLYQCGFDDTVKFLLENWFE

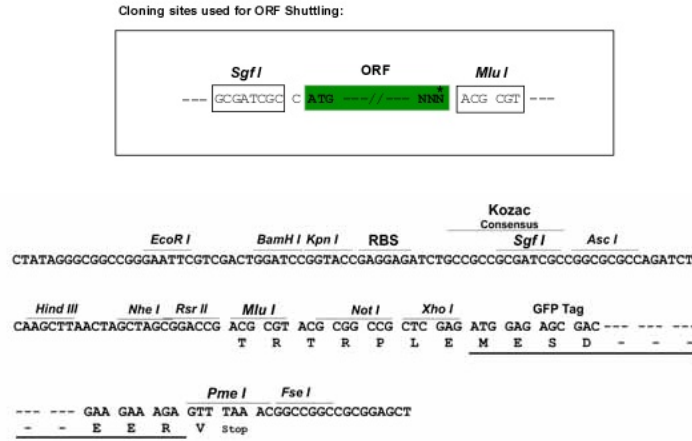
TRTRPLE - GFP Tag - V

Restriction Sites: Sgfl-MluI

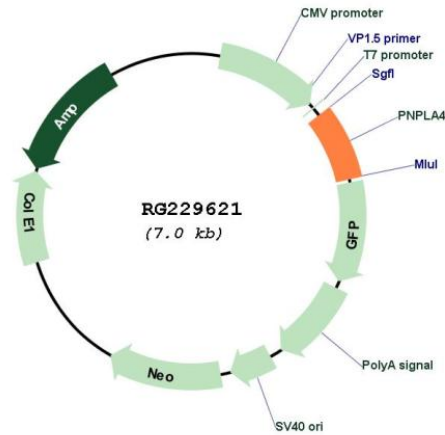


[View online »](#)

Cloning Scheme:



Plasmid Map:



ACCN: NM_001172672

ORF Size: 498 bp

OTI Disclaimer: The molecular sequence of this clone aligns with the gene accession number as a point of reference only. However, individual transcript sequences of the same gene can differ through naturally occurring variations (e.g. polymorphisms), each with its own valid existence. This clone is substantially in agreement with the reference, but a complete review of all prevailing variants is recommended prior to use. [More info](#)

OTI Annotation: This clone was engineered to express the complete ORF with an expression tag. Expression varies depending on the nature of the gene.

Components:	The ORF clone is ion-exchange column purified and shipped in a 2D barcoded Matrix tube containing 10ug of transfection-ready, dried plasmid DNA (reconstitute with 100 ul of water).
Reconstitution Method:	<ol style="list-style-type: none">1. Centrifuge at 5,000xg for 5min.2. Carefully open the tube and add 100ul of sterile water to dissolve the DNA.3. Close the tube and incubate for 10 minutes at room temperature.4. Briefly vortex the tube and then do a quick spin (less than 5000xg) to concentrate the liquid at the bottom.5. Store the suspended plasmid at -20°C. The DNA is stable for at least one year from date of shipping when stored at -20°C.
RefSeq:	<u>NM_001172672.1, NP_001166143.1</u>
RefSeq Size:	2559 bp
RefSeq ORF:	501 bp
Locus ID:	8228
UniProt ID:	<u>P41247</u>
Cytogenetics:	Xp22.31
Protein Pathways:	Retinol metabolism
Gene Summary:	This gene encodes a member of the patatin-like family of phospholipases. The encoded enzyme has both triacylglycerol lipase and transacylase activities and may be involved in adipocyte triglyceride homeostasis. Alternate splicing results in multiple transcript variants. A pseudogene of this gene is found on chromosome Y. [provided by RefSeq, Feb 2010]