

Product datasheet for **RG229613**

BEX2 (NM_001168399) Human Tagged ORF Clone

Product data:

Product Type: Expression Plasmids
Product Name: BEX2 (NM_001168399) Human Tagged ORF Clone
Tag: TurboGFP
Symbol: BEX2
Synonyms: BEX1; DJ79P11.1
Mammalian Cell Selection: Neomycin
Vector: pCMV6-AC-GFP (PS100010)
E. coli Selection: Ampicillin (100 ug/mL)
ORF Nucleotide Sequence: >RG229613 representing NM_001168399
 Red=Cloning site Blue=ORF Green=Tags(s)

TTTTGTAATACGACTCACTATAGGGCGGCCGGAATTCGTCGACTGGATCCGGTACCGAGGAGATCTGCC
 GCC**CGATCGCC**

ATGCAGAAAATGGTGGTTTGC GG G G C C A A G T G T T G C G G C G A C G C A C C T C A C G T C G A G A A T C G G G A G G A G G
 A G A C T G C A A G G A T A G G C C A G G A G T A A T G G A G T C C A A A G A G G A A C G A G C G T T A A C A A T C T C A T C G T G G A
 A A A T G T C A A C C A G G A A A A T G A T G A A A A A G A T G A A A A G G A G C A A G T T G C T A A T A A A G G G G A G C C C T T G G C C
 C T A C C T T T G A A T G T T A G T G A A T A C T G T G T G C C T A G A G G A A A C C G T A G G C G G T T C C G C G T T A G G C A G C C C A
 T C C T G C A G T A T A G A T G G G A C A T A A T G C A T A G G C T T G G A G A G C C A C A G G C A A G G A T G A G A G A G G A G A A T A T
 G G A A A G G A T T G G G G A G G A G G T G A G A C A G C T G A T G G A A A A G C T G A G G G A A A A G C A G T T G A G T C A T A G T T T G
 C G G G C A G T C A G C A C T G A T C C C C C T C A C C A T G A C C A T C A C G A T G A G T T T T G C C T T A T G C C C

ACGCGTACGCGGCCGCTCGAG - GFP Tag - GTTTAA

Protein Sequence: >RG229613 representing NM_001168399
 Red=Cloning site Green=Tags(s)

MQKMVVC GAKCCGDAPHVENREEETARIGPGVMESKEERALNNLIVENVNQENDEKDEKEQVANKGEPLA
 LPLNVSEYCVPRGNRRFRVRQPILQYRWDIMHRLGEPQARMREENMERIGEEVRLMEKLRKQLSHSL
 RAVSTDPHHDHDEFCLMP

TRTRPLE - GFP Tag - V

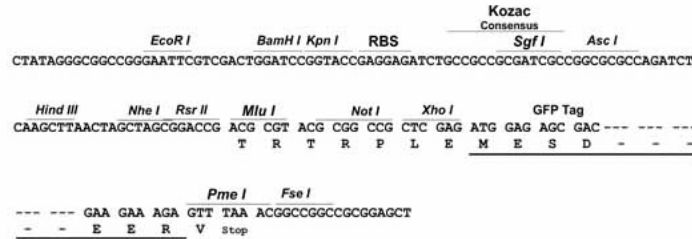
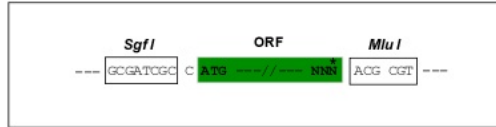
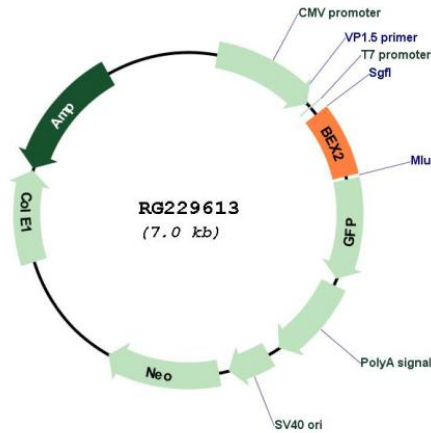
Restriction Sites: SgfI-MluI



[View online »](#)

Cloning Scheme:

Cloning sites used for ORF Shutting:


Plasmid Map:

ACCN: NM_001168399

ORF Size: 480 bp

OTI Disclaimer: The molecular sequence of this clone aligns with the gene accession number as a point of reference only. However, individual transcript sequences of the same gene can differ through naturally occurring variations (e.g. polymorphisms), each with its own valid existence. This clone is substantially in agreement with the reference, but a complete review of all prevailing variants is recommended prior to use. [More info](#)
OTI Annotation: This clone was engineered to express the complete ORF with an expression tag. Expression varies depending on the nature of the gene.

Components:	The ORF clone is ion-exchange column purified and shipped in a 2D barcoded Matrix tube containing 10ug of transfection-ready, dried plasmid DNA (reconstitute with 100 ul of water).
Reconstitution Method:	<ol style="list-style-type: none">1. Centrifuge at 5,000xg for 5min.2. Carefully open the tube and add 100ul of sterile water to dissolve the DNA.3. Close the tube and incubate for 10 minutes at room temperature.4. Briefly vortex the tube and then do a quick spin (less than 5000xg) to concentrate the liquid at the bottom.5. Store the suspended plasmid at -20°C. The DNA is stable for at least one year from date of shipping when stored at -20°C.
RefSeq:	<u>NM_001168399.1, NP_001161871.1</u>
RefSeq Size:	1100 bp
RefSeq ORF:	483 bp
Locus ID:	84707
UniProt ID:	<u>Q9BXY8</u>
Cytogenetics:	Xq22.2
Gene Summary:	This gene belongs to the brain expressed X-linked gene family. The encoded protein interacts with the transcription factor LIM domain only 2 in a DNA-binding complex that recognizes the E-box element and promotes transcription. This gene has been found to be a tumor suppressor that is silenced in human glioma. In breast cancer cells, this gene product modulates apoptosis in response to estrogen and tamoxifen, and enhances the anti-proliferative effect of tamoxifen. Multiple transcript variants encoding different isoforms have been found for this gene. [provided by RefSeq, Dec 2009]