

Product datasheet for **RG229552**

CINP (NM_001177612) Human Tagged ORF Clone

Product data:

Product Type: Expression Plasmids
Product Name: CINP (NM_001177612) Human Tagged ORF Clone
Tag: TurboGFP
Symbol: CINP
Synonyms: MGC849
Mammalian Cell Selection: Neomycin
Vector: pCMV6-AC-GFP (PS100010)
E. coli Selection: Ampicillin (100 ug/mL)
ORF Nucleotide Sequence: >RG229552 representing NM_001177612
Red=Cloning site **Blue**=ORF **Green**=Tags(s)

TTTTGTAATACGACTCACTATAGGGCGGCCGGAATTCGTCGACTGGATCCGGTACCGAGGAGATCTGCC
GCC**CGATCGCC**

ATGGAAGCAAAGACTCTTGGAACTGTAACGCCAGAAAACCTGTCTTATCTGTCAGTGCAAGAAAAATTA
AGGACAATGCGGCTGATTGGCACAATTTAATCCTGAAGTGGGAAACCCTCAATGATGCAGGTTTTACCAC
TGCAAATAATATTGCCAATTGAAAATCAGTTTATTGAATAAAGACAAGATAGAACTAGACAGCAGCAGC
CCAGCCTCGAAGGAAAAAAGAAAAGGTGTCTGGAATATAACGAGGAACTGGAGAAGCTGTGTGAGG
AACTGCAGGCCACCTTGGATGGGTTGATGAGGTTTCGCATAAGCTCTTGGAGATGTACAGGAAGGAGCTG
CTCC

ACGCGTACGCGGCCGCTCGAG - GFP Tag - GTTTAA

Protein Sequence: >RG229552 representing NM_001177612
Red=Cloning site **Green**=Tags(s)

MEAKTLGTVTPRKPVLSVSARKIKDNAADWHNLILKWETLNDAGFTTANNIANLKISLLNKDKIELDSSS
PASKENEKVCLEYNEELEKLCHEELQATLDGLMRFRISSWRCTGRSCS

TRTRPLE - GFP Tag - V

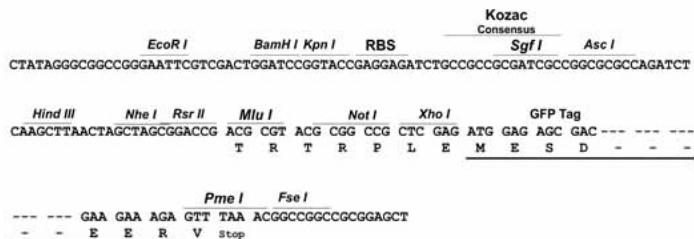
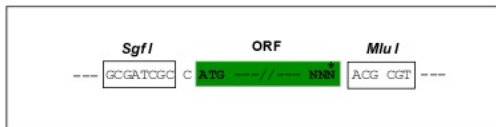
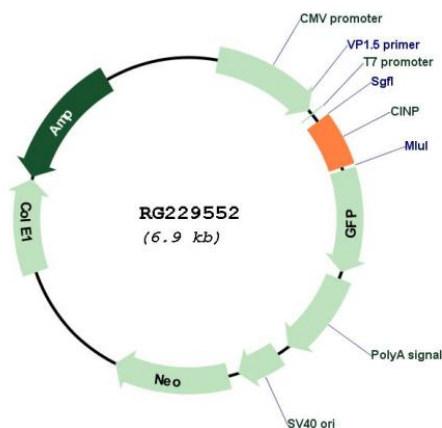
Restriction Sites: Sgfl-MluI



[View online »](#)

Cloning Scheme:

Cloning sites used for ORF Shutting:


Plasmid Map:

ACCN: NM_001177612

ORF Size: 354 bp

OTI Disclaimer: The molecular sequence of this clone aligns with the gene accession number as a point of reference only. However, individual transcript sequences of the same gene can differ through naturally occurring variations (e.g. polymorphisms), each with its own valid existence. This clone is substantially in agreement with the reference, but a complete review of all prevailing variants is recommended prior to use. [More info](#)

OTI Annotation:	This clone was engineered to express the complete ORF with an expression tag. Expression varies depending on the nature of the gene.
Components:	The ORF clone is ion-exchange column purified and shipped in a 2D barcoded Matrix tube containing 10ug of transfection-ready, dried plasmid DNA (reconstitute with 100 ul of water).
Reconstitution Method:	<ol style="list-style-type: none">1. Centrifuge at 5,000xg for 5min.2. Carefully open the tube and add 100ul of sterile water to dissolve the DNA.3. Close the tube and incubate for 10 minutes at room temperature.4. Briefly vortex the tube and then do a quick spin (less than 5000xg) to concentrate the liquid at the bottom.5. Store the suspended plasmid at -20°C. The DNA is stable for at least one year from date of shipping when stored at -20°C.
RefSeq:	<u>NM_001177612.1, NP_001171083.1</u>
RefSeq Size:	866 bp
RefSeq ORF:	356 bp
Locus ID:	51550
Cytogenetics:	14q32.31
Protein Families:	Druggable Genome
Gene Summary:	The protein encoded by this gene is reported to be a component of the DNA replication complex as well as a genome-maintenance protein. It may interact with proteins important for replication initiation and has been shown to bind chromatin at the G1 phase of the cell cycle and dissociate from chromatin with replication initiation. It may also serve to regulate checkpoint signaling as part of the DNA damage response. Alternative splicing results in multiple transcript variants. [provided by RefSeq, Feb 2016]