

Product datasheet for **RG229549**

Cholecystokinin (CCK) (NM_001174138) Human Tagged ORF Clone

Product data:

Product Type:	Expression Plasmids
Product Name:	Cholecystokinin (CCK) (NM_001174138) Human Tagged ORF Clone
Tag:	TurboGFP
Symbol:	Cholecystokinin
Mammalian Cell Selection:	Neomycin
Vector:	pCMV6-AC-GFP (PS100010)
E. coli Selection:	Ampicillin (100 ug/mL)
ORF Nucleotide Sequence:	>RG229549 representing NM_001174138 Red=Cloning site Blue=ORF Green=Tags(s)

TTTTGTAATACGACTCACTATAGGGCGGCCGGAATTCGTCGACTGGATCCGGTACCGAGGAGATCTGCC
GCC**CGATCGCC**

ATGAACAGCGCGTGTGCCTGTGCGTGCTGATGGCGGTACTGGCGGCTGGCGCCCTGACGCAGCCGGTGC
CTCCCGCAGATCCCGCGGGCTCCGGGCTGCAGCGGGCAGAGGAGGCGCCCGTAGGCAGCTGAGGGTATC
GCAGAGAACGGATGGCGAGTCCCGAGCGCACCTGGCGCCCTGCTGGCAAGATACATCCAGCAGGCCCGG
AAAGCTCCTTCTGGACGAATGTCCATCGTTAAGAACCTGCAGAACCTGGACCCAGCCACAGGATAAGTG
ACCGGGACTACATGGGCTGGATGGATTTGGCCGTCGCAGTGCCGAGGAGTATGAGTACCCCTCC

ACGCGTACGCGGCCGCTCGAG - GFP Tag - GTTTAA

Protein Sequence:	>RG229549 representing NM_001174138 Red=Cloning site Green=Tags(s)
-------------------	---

MNSGVCLCVLMAVLAAGALTQPVPPADPAGSGLQRAEEAPRRQLRVSQRTDGESRAHLGALLARYIQQAR
KAPSGRMSIVKNLQNLDPISHRISDRDYMGMDFGRRSAEEYEYPS

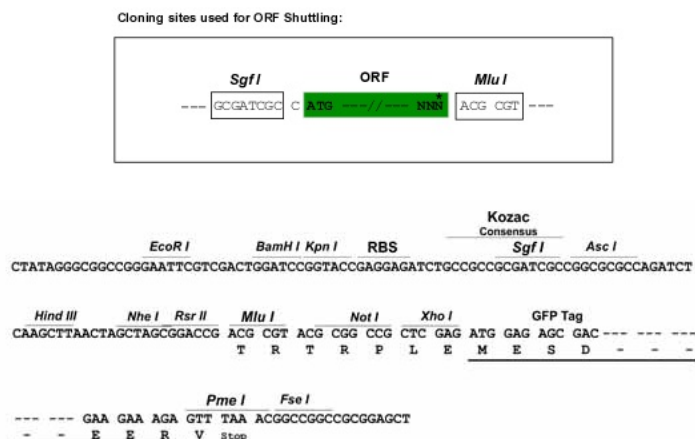
TRTRPLE - GFP Tag - V

Restriction Sites:	SgfI-MluI
--------------------	-----------



[View online »](#)

Cloning Scheme:



ACCN: NM_001174138

ORF Size: 345 bp

OTI Disclaimer: The molecular sequence of this clone aligns with the gene accession number as a point of reference only. However, individual transcript sequences of the same gene can differ through naturally occurring variations (e.g. polymorphisms), each with its own valid existence. This clone is substantially in agreement with the reference, but a complete review of all prevailing variants is recommended prior to use. [More info](#)

OTI Annotation: This clone was engineered to express the complete ORF with an expression tag. Expression varies depending on the nature of the gene.

Components: The ORF clone is ion-exchange column purified and shipped in a 2D barcoded Matrix tube containing 10ug of transfection-ready, dried plasmid DNA (reconstitute with 100 ul of water).

Reconstitution Method:

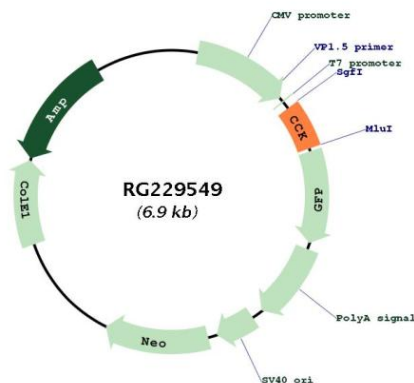
1. Centrifuge at 5,000xg for 5min.
2. Carefully open the tube and add 100ul of sterile water to dissolve the DNA.
3. Close the tube and incubate for 10 minutes at room temperature.
4. Briefly vortex the tube and then do a quick spin (less than 5000xg) to concentrate the liquid at the bottom.
5. Store the suspended plasmid at -20°C. The DNA is stable for at least one year from date of shipping when stored at -20°C.

RefSeq: [NM_001174138.2](#)

RefSeq Size: 769 bp

RefSeq ORF:	348 bp
Locus ID:	885
UniProt ID:	P06307
Cytogenetics:	3p22.1
Protein Families:	Druggable Genome, Secreted Protein
Gene Summary:	This gene encodes a member of the gastrin/cholecystokinin family of proteins. The encoded preproprotein is proteolytically processed to generate multiple protein products, including the peptide hormones cholecystokinin-8, -12, -33, and others. The encoded peptides have been shown to regulate gastric acid secretion and food intake. A sulfated form of cholecystokinin-8 may modulate neuronal activity in the brain. Alternative splicing results in multiple transcript variants. [provided by RefSeq, Nov 2015]

Product images:



Circular map for RG229549