

Product datasheet for **RG229462**

DOCK8 (NM_203447) Human Tagged ORF Clone

Product data:

Product Type: Expression Plasmids
Product Name: DOCK8 (NM_203447) Human Tagged ORF Clone
Tag: TurboGFP
Symbol: DOCK8
Synonyms: HEL-205; MRD2; ZIR8
Mammalian Cell Selection: Neomycin
Vector: pCMV6-AC-GFP (PS100010)
E. coli Selection: Ampicillin (100 ug/mL)
ORF Nucleotide Sequence: >RG229462 representing NM_203447
 Red=Cloning site Blue=ORF Green=Tags(s)

TTTTGTAATACGACTCACTATAGGGCGGCCGGAATTCGTCGACTGGATCCGGTACCGAGGAGATCTGCC
 GCC**CGATCGCC**

ATGGCCACTCTGCCGAGCGCAGAGCGCCGCGGTTTCGCGCTCAAGATCAACAGGTATTCTTCAGCGGAAA
 TAAGGAAACAGTTTACTCTCCACCAAACCTTGGCCAGTACCATCGACAGAGCATAAGTACCTCTGGCTT
 CCCCTCTTTCACTACCTCAGTTTTATGACCCTGTGGAGCCAGTGGACTTTGAAGGACTTCTGATGACA
 CACCTGAACAGCCTGGATGTGCAGCTTGCCAGGAGCTCGGGACTTCACTGATGACGACTTGGACGTGG
 TGTTACAGCCAAAGGAATGTAGGACTTTGCAGCCCTCTTTCGCGGAGGAAGGGTTGAAGTGGACCTCA
 TGTGAGGACTGTGTTACAGACTACATCCGTGAGTGGCTAATCGTGAACCGGAAAAACCAAGGAAGTCCA
 GAAATCTGTGGCTTTAAAAGACTGGATCTCGAAAAGATTTTCAACAAGACGCTTCCGAAAACAGACGTTTG
 AGTCGAAAACCTTGGAGTGCAGTGAACCCGCTGCTCAGGCAGGCCCCCGCCACTTAAACGTGCTGTGCGA
 CGTGTCTGGGAAAGGCCCGTCACTGCCTGTGACTTTGACCTCCGCAGCCTGCAGCCTGACAAGCGGCTA
 GAAAACCTCCTGCAGCAAGTGAAGTGCAGGACTTTGAGAAGCAGAACGAGGAGGCCCGGAGGACCAATA
 GGCAGGCCGAGCTCTTGGCCCTTACCCATCAGTGGACGAGGAGGATGCTGTGGAATACGTCCAGTACC
 AGAATGTCCAAAGAACACCTGGGCAACAGAATATTGGTCAAGTTGCTGACCTTGAAGTTGAGATTGAA
 ATTGAGCCCTGTTTGGCAGCATTGCCCTCTACGATGTTAAAGAAAGGAAAAAGATCTCAGAAAAATTTTC
 ACTGTGACCTGAACTCTGACCAGTTCAAAGGATTTCTGCGAGCTCACACGCCTTCAAGTGGCCGATCAAG
 TCAGGCGAGATCTGCAGTCTTCTCAGTACCTACCCGTCCTCAGACATCTACCTGGTAGTCAAGATTGAA
 AAAGTCTGCAGCAGGAGAGATTGGAGACTGTGCAGAGCCCTACACGGTTATCAAAGAAAGTATGGTG
 GAAAGAGTAAAGAAAAGATTGAAAACTAAAACTCCAAGCTGAATCCTTCTGCCAGCGTTTGGGAAATA
 CCGGATGCCCTTGGCTGGGCACCCATAAGCTTATCAAGCTTCTCAATGTCTCCACCCTTGAGAGGGAG
 GTAAGTGTGGACTCTGTGGTTGGGAGAAGCTCAGTGGTGAACGGAGGACATTGGCCCAATCTAGAA
 GGCTTTCTGAAAGAGCCCTCTCCTTGGAGAAAATGGGGTTGGATCCAATTCAAAACCTCCACTCTGAG
 CGTTAGCAGCTTTTCAAGCAGGAAGGAGATCGCCTTAGCGATGAAGACTTATCAAGTTTTAGCTGAC



[View online >](#)

TACAAAAGATCATCATCCTTACAGAGACGAGTCAAGTCAATTCAGGCTTGCTAAGACTGGAGATTCTA
 CAGCTCCAGAGATCATCAATTGCTGTCTGACTCCTGAAATGCTGCCCGTAAAACCCCTTCTGAAAACCG
 GACACGCCCGCACAAAGAGATTTTGAATTTTCAACACGAGAAGTATATGTCCTCACACTGTGTACAGA
 AACCTTCTATGTCTACCCACAGAGGCTGAACTTTGTAACAACTAGCATCAGCCCGAACATTACAA
 TAAAGATCCAGTTTATGTGTGGAGAAGATGCTAGCAATGCGATGCCGGTCATCTTTGGAAAATCCAGCGG
 GCCTGAATTTCTGCAGGAAGTGTACACAGCTGTTACATAACCATAATAAGTCTCCTGACTTTTATGAAGAA
 GTGAAAATTAAGCTCCCCGCTAAGCTCACAGTAAATACCACCTCCTGTTACCTTCTACCATATACGCT
 GTCAGCAGAAGCAAGGAGCCTCCGTGGAACTCTCCTGGGATATTCATGGCTGCCAATTCCTTAAATGA
 ACGTCTTCAAACCTGGATCCTACTGTCTCCAGTTGCCTTGAAAAAATTGCCACCCAACTACTCCATGCAT
 TCTGCTGAGAAAAGTCCCATTACAGAATCCTCCATTAAAGTGGGCTGAAGGACATAAGGGAGTATTTAATA
 TTGAAGTGCAAGCTGTTTCTTGTACACACCCAGGACAACCACCTGGAGAAGTTCTTACCCTCTGCCA
 CTCCTTGAGAGCCAGGTGACCTTCCCCATCCGCGTGTGGATCAGAAAATCAGCGAGATGGCGCTGGAG
 CATGAGCTGAAGCTCAGCATCATCTGCCTGAACCTCCTCCGCTGGAGCCGCTCGTCTTCTCTGCACC
 TGGTGTGGACAAGCTCTCCAGCTGTCCGTGCAGCCATGGTCATCGCTGGCCAGACAGCCAATTCTC
 CCAGTTTGCCTTCGAGTCCGTGGTGGCCATCGCCAACAGTCTGCACAACAGCAAGGACCTGAGCAAGGAC
 CAGCATGGGAGGAACTGCCTGTGGCTTCTACGTGCACTACGTCTTCCGCTGCCAGAGGTGCAAAGGG
 ATGTGCCCAAGTCAGGCGCTCCCACTGCCTCCTAGACCTCGGAGCTACCACACGTATGGCCGCACATC
 AGCTGTGCTGTGAGTTCAAAGCTGCTGCAGGCCCGGGTATGAGCAGCAGTAACCCAGACCTCGCGGGG
 ACACACTCCGACGACGAGGAAGTGAAGAACATCATGTCTTCAAAGATCGCCGATCGCAACTGCAGCC
 GAATGTCTTACTATTGCTCTGGCAGTAGTGATGCTCCAAGTTCACCTGCAGCCCCAAGGCCAGCCAGCAA
 AAAGCATTTCCATGAGGAGCTTGCCCTTTCAGATGGTGGTCAACCGGAATGGTGAAGAAAACAGTCTTC
 AAGTATGCCTGGTCTTCTTTGAGCTTCTGGTAAAAGCATGGCCAGCAGTACATAACATGGACAAC
 GGGACAGTTTTTCGAGGACTCGTTTTTCTGACCTTTCATGGATGACATAACTACTATTGTTAATGTGGT
 CACCTCGAAAATTGCAGCCCTTTTGTAAAACACAGAAGGAAAATGAACAGGCGGAAAAGATGAACATC
 AGCCTGGCTTTCTTGTATGACCTTCTCCTCATGGATCGGGCTTTGTGTTAACTCATCAGAC
 ATTATTGCAGCCAGCTGTGAGCAAGCTCAGTAACCTTCCAACGCTCATTCCATGAGGCTAGAGTTCCT
 GAGAATCCTCTGTAGCCATGAGCATTACCTCAATCTGAACCTTTTTTTTATGAATGCTGATACTGCTCCA
 ACATCTCCTTGCCTTCCATATCTTCCAGAATCAAGCTCCTGCTCCAGCTTCCAGGACCAGAAGATCG
 CCAGCATGTTGATCTGACTTCCGAGTACCGCCAGCAGCACTTCTCACCAGGCTCCTTTCACAGAAT
 GGCTGTGCCCTGGATGCCGAAGGGGAAGGAATCAGCAAAGTACAAGGAAAGCTGTGAGTCAATTCAC
 AGCCTGCTAAGTCTCACGACCTGGACCCAGCTGTGTCAAACAGAGGTGAAGGTCAAATCGCCGCC
 TTTACCTACCTTTAGTTGGCATATTTTGGATGCTTTGCCACAGCTCTGTGACTTTACAGTTGCAGATAC
 TCGCAGATACCGCACCAGTGGCTCGGATGAAGAACAAGAAGGAGCCGGTGCCATTAACAGAAATGTGGCT
 CTGGCCATAGCAGGGAATAATTTCAATTTGAAAACAAGTGAATAGTGTGCTTCTTGCCTATAAGC
 AGTACAACATGCTGAACGCGGACACTACTCGCAACCTCATGATCTGCTTCTCTGGATCATGAAAATGC
 TGATCAGAGCCTCATTAGGAAGTGGATTGCTGACCTGCCATCAACGCAGCTCAACAGGATTTTAGATCTA
 CTTTTCATCTGTGTGTTATGTTTTGAGTATAAGGGAAAACAGAGTCTGACAAAAGTCAAGTACCAAGTCC
 TGCAGAAGTCAAGGATGTCAAGGCCGGCTGGAAGAGGCTTTGCTCCGTGGGGAAGGGCCAGAGGGGA
 GATGATGCGCCGCGGGCTCCAGGGAACGACCGATTTCCAGGCCTAAATGAAAATTTGAGATGGAAGAAA
 GAGCAGACACATTGGCGCAAGCTAATGAGAAGCTAGATAAAAACAAGGCGGAGTTAGATCAAGAAGCCT
 TGATCAGTGGCAATCTGGCTACAGAAGCACATTTAATCATCCTGGATATGCAGGAAAACATTATCCAGG
 GAGCTCGGCTCTGGACTGTAAAGACAGCCTGCTGGGAGGTGTTCTGAGGGTGTGGTGAATTTCTGAA
 TGTGATCAGAGTACCACCTACCTGACTACTGCTTTGCAACACTCCGTGCTCTCATCGCCAAGTTTGGAG
 ACTTACTCTTGAAGAGGAGGTGGAACAGTGTTCGACCTATGTCACCAAGTCTGCACCACTGCAGCAG
 CAGCATGGATGTCACCCGAGCCAAGCCTGTGCCACCTTTACCTCCTCATGAGGTTCAAGTTTGGAGCC
 ACCAGTAATTTGCAAGAGTAAAGATGCAAGTAAACATGTCCCTGGCATCTTTGGTGGGAAGAGCACCAG
 ACTTTAATGAAGAGCACCTGAGAAGATCCTTGAGGACAATTTTGGCCTATTCAGAAGAGGACACAGCCAT
 GCAGATGACTCCTTTTCCACCCAGGTGGAGGAACTTCTCTGTAATCTGAATAGCATCTTATATGACACA
 GTGAAAATGAGGGAATTTTCAAGGATCCTGAGATGCTTATGGATCTCATGTACAGAATTGCCAAGAGTT
 ACCAGGCATCTCCTGATCTGCGGCTGACCTGGCTCCAGAACATGGCAGAGAAAACACCAAGAAGAAGTG
 CTACACGGAGGCTGCCATGTGCCTGGTGCACGCCGCTGCGTTAGTGGCTGAGTATCTGAGCATGCTGGAG
 GACCACAGCTACCTGCCCGTGGGAGTGTGAGCTTCCAGAATATTTTCCAATGTGCTGGAGGAGTCTG

TGGTCTCTGAGGACACCCTGTCACCTGACGAGGATGGGGTGTGCCAGGCCAGTACTTCACCGAGAGTGG
CCTGGTAGGCCTCCTGGAGCAGGCCGCGGAGCTTTCAGCACGGGAGGCTTATATGAGACAGTAAATGAG
GTCTACAAGCTGGTCATCCCCATCTAGAAAGCGCATCGAGAATCCGGAAGCTGACACTCACTCAGCA
AGCTGCAGAGAGCCTTCGACAGCATCGTTAAACAAGGATCATAAGAGAATGTTTGGAACTACTTCCGAGT
TGGTTTCTTTGGATCCAAATTTGGGGATTTGGATGAACAGGAGTTTGTCTACAAAGAGCCTGCAATTACC
AAGCTTCCTGAGATCTCACATAGACTAGAGGCATTTTATGGTCAATGTTTGGTGCAGAATTTGTGGAAG
TGATTAAGACTCCACTCCTGTGGACAAAACCAAGTTGGATCCTAACAAGCCTACATACAGATCACTTT
TGTGGAGCCCTACTTTGATGAGTATGAGATGAAAGACAGGGTCACATACTTTGAGAAGAATTTCAACCTC
CGGAGGTTTCATGTACACCACCCCGTTCACCCTGGAGGGGCGGCCTCGGGGAGAGCTGCATGAGCAGTACA
GAAGGAACACAGTCTGACCACTATGCACGCCTTCCCCTACATCAAGACCAGGATCAGCGTCATCCAGAA
GGAGGAGTTTGTGTTTACACCGATTGAAGTTGCCATTGAAGACATGAAGAAGAAGACCCTGCAGTTAGCA
GTTGCCATTAACCAGGAGCCGCTGATGCAAAGATGCTTCAGATGGTGTGCAAGGCTCTGTGGGAGCTA
CTGTAATCAGGGACCACTGGAAGTAGCCCAAGTGTGTTTGGCTGAAATTCCTGCTGATCCAAACTCTA
TCGACATCACAACAAGTTGAGGTTATGCTTTAAGGAATTCATCATGAGATGTGGTGAAGCTGTAGAGAAA
ACAAGCGTCTCATCACGGCAGACCAGAGGGAATATCAGCAGGAACTCAAAAAGAACTATAACAAGCTAA
AAGAGAACCTCAGGCAAATGATCGAGCGGAAAATTCAGAACTGTACAAGCCAATATTCAGAGTTGAGAG
TCAAAAGAGGGACTCCTCCACAGATCTAGTTTCAGGAAATGTGAAACCCAGTTGTCACAGGGCAGC

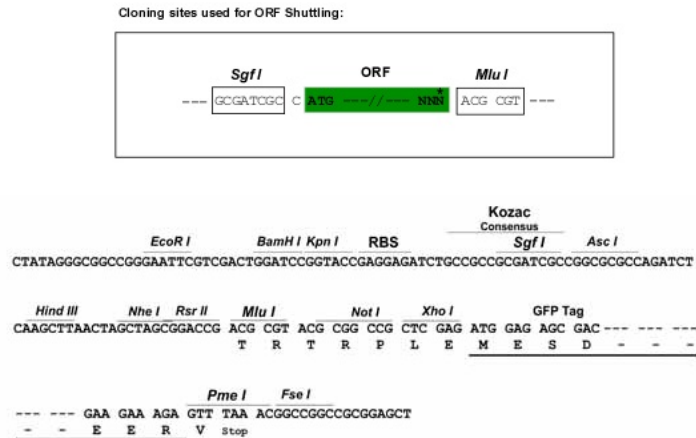
ACGCGTACGCGGCCGCTCGAG – GFP Tag – GTTTAA

Protein Sequence: >RG229462 representing NM_203447
 Red=Cloning site Green=Tags(s)

MATLPSAERRAFALKINRYSSAEIRKQFTLPPNLGQYHRQSIISTSGFPSLQLPQFYDPVEPVDVEGLLMT
 HLNSLDVQLAQELGDFDDDLDDVVFTPKECRTLQPSLPEEGVELDPHVRCVQTYIREWLIVNRKNQGS
 EICGFKKTGSRKDFHKTLPKQTFESETLECSAPAAQAGPRHLNVLCDVSGKGPVTACDFDLRSLQPDKRL
 ENLLQQVSAEDFEKQNEEARRTNRQALFALYPSVDEEDAVEIRPVPECPKEHLGNRILVKLLTLKFEIE
 IEPLFASIALYDVKERKKISENFHCDLNSDQFKGFLRAHTPSVAASSQARSQAVFSVTPSSDIYLVVKIE
 KVLQQGEIGDCAEPYTVIKESDGGKSKEKIEKLLQAESEFCQRLGKYRMPFAPAWAPISLSSFFNVSTLERE
 VTDVDSVVGSRSSVGERRTLAQSRRLSERALSLEENGVGSNFKTSTLSVSSFFKQEGDRLSDEDLFKFLAD
 YKRSSSLQRRVKSIPGLLRLEISTAPEIINCLTPEMLPVKPFENRTRPHKEILEFPTREVYVPHTVYR
 NLLVYVYQRLNFNKLASARNITIKIQMCGEDASNAMPVIFGKSSGPEFLQEVYAVTYHNKSPDFYEE
 VKIKLPAKLTVNHHLLFTFYHISCCQKQASVETLLGYSWLPILLNERLQTGSYCLPVALEKLPNYSMH
 SAEKVPLQNPPIKWAEGHKGVNIEVQAVSSVHTQDNHLEKFFTLCHSLESQVTFPIRVLDQKISEMALE
 HELKLSIICLNSSRLEPLVFLHLVLDKLFQLSVQPMVIAGQTANFSQFAFESVVAIANSLHNSKDLKSD
 QHGRNCLLASVYHYVFRLEPEVQRDVPKSGAPTALLDPRS YHTYGRTSAAA VSSKLLQARVMSSSNPDLA
 GTHSAADEEVKNIMSSKIADRNC SRMSYCSGSSDAPSSPAAPRASKKHFEELALQM VVSTGMVRET
 VFKYAWFFELLVKSMAQHVHNMKDRSFRTRFRSDRFMDDITTI VNVVTSEIAALLVKPQKENEQAEKMN
 ISLAFFLYDLLSLMDRGVFNLRHYCSQLSAKLSNLPTLISMRLEFLRILCSHEHYLNLLFFMNADTAP
 TSPCPSISSQNSSSCSSFDQKIASMFDLTSEYRQQHFLTGLLFTELAALDAEGEGISKVQRKAVSAIH
 SLLSSHLDPRCVKPEVKVIAALYLPLVGIILDALPQLCDFTVADTRRYRTSGSDEEQEGAGAINQNV
 ALAIAGNNFNKTSIGIVLSSLPYKQYNMLNADTTRNLMICFLWIMKNADQSLIRKWIADLPSTQLNRILDL
 LFIICVLCFEYKKGQSSDKVSTQVLQKSRDVKARLEEALLRGE GARGEMRRRAPGNDRFPGLNENLRWKK
 EQTHWRQANEKLDKTKAELDQEALISGNLATEAHLIILDMQENIQASSALDCKDSSLGGVLRVNLVNSLN
 CDQSTTYLTHCFATLRALIAKFGDLLFEEVEQCDFDLCHQVLHHCSSMDVTRSQAATLYLLMRFSFGA
 TSNFARVKMQVTMSLASLVGRAPDFNEEHLRSLRILAYSEEDTAMQMPFPTQVEELLNLSILYDT
 VKMREFQEDPEMLMDL MYRIAKSYQASPDRLRLTWLQNM AEKHTKKKCYTEAMCLVHAAALVAEYLSMLE
 DHSYLPVGSVSFQNISSNVLEESVVSEDTLSPDEDGVCAGQYFTESGLVGLLEQAAELFSTGGLYETVNE
 VYKLVIPILEAHREFRKLTLTHSKLQRAFDSIVNKDHKRMFGTYFRVGF GSKFGDLDEQEFVYKEPAIT
 KLPEISHRLEAFYGCFGAEFVEVIKIDSTPVDKTKLDPNKAYIQITFVEPYFDEYEMKDRVTYFEKNFNL
 RRFMYTTPFTLEGRPRGELHEQYRRNTVLTTMHAFYIKTRISVIQKEEFVLTPIEVAIEDMKKKTQLA
 VAINQEPDAKMLQMV LQGSV GATVNQGP LEVAQVFLAEIPADPKLYRHHNKLRLCFKEFIMRCGEAVEK
 NKRLITADQREYQQELKKNYNKLENLRPMIERKIPELYKPIFRVESQKRDSFHRSSFRKCETQLSQGS

TRTRPLE - GFP Tag - V

Restriction Sites: Sgfl-MluI

Cloning Scheme:


ACCN: NM_203447

ORF Size: 6297 bp

OTI Disclaimer: Due to the inherent nature of this plasmid, standard methods to replicate additional amounts of DNA in E. coli are highly likely to result in mutations and/or rearrangements. Therefore, OriGene does not guarantee the capability to replicate this plasmid DNA. Additional amounts of DNA can be purchased from OriGene with batch-specific, full-sequence verification at a reduced cost. Please contact our customer care team at custsupport@origene.com or by calling 301.340.3188 option 3 for pricing and delivery.

The molecular sequence of this clone aligns with the gene accession number as a point of reference only. However, individual transcript sequences of the same gene can differ through naturally occurring variations (e.g. polymorphisms), each with its own valid existence. This clone is substantially in agreement with the reference, but a complete review of all prevailing variants is recommended prior to use. [More info](#)

OTI Annotation: This clone was engineered to express the complete ORF with an expression tag. Expression varies depending on the nature of the gene.

Components: The ORF clone is ion-exchange column purified and shipped in a 2D barcoded Matrix tube containing 10ug of transfection-ready, dried plasmid DNA (reconstitute with 100 ul of water).

Reconstitution Method:

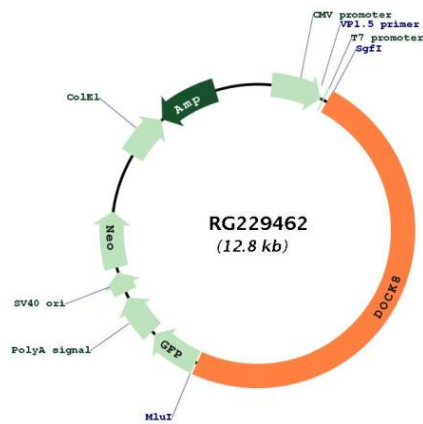
1. Centrifuge at 5,000xg for 5min.
2. Carefully open the tube and add 100ul of sterile water to dissolve the DNA.
3. Close the tube and incubate for 10 minutes at room temperature.
4. Briefly vortex the tube and then do a quick spin (less than 5000xg) to concentrate the liquid at the bottom.
5. Store the suspended plasmid at -20°C. The DNA is stable for at least one year from date of shipping when stored at -20°C.

RefSeq: [NM_203447.3](#), [NP_982272.2](#)

RefSeq Size: 7470 bp
 RefSeq ORF: 6300 bp
 Locus ID: 81704
 UniProt ID: [Q8NF50](#)
 Cytogenetics: 9p24.3

Gene Summary: This gene encodes a member of the DOCK180 family of guanine nucleotide exchange factors. Guanine nucleotide exchange factors interact with Rho GTPases and are components of intracellular signaling networks. Mutations in this gene result in the autosomal recessive form of the hyper-IgE syndrome. Alternatively spliced transcript variants encoding different isoforms have been described.[provided by RefSeq, Jun 2010]

Product images:



Circular map for RG229462