

Product datasheet for **RG229412**

SORCS2 (NM_020777) Human Tagged ORF Clone

Product data:

Product Type: Expression Plasmids
 Product Name: SORCS2 (NM_020777) Human Tagged ORF Clone
 Tag: TurboGFP
 Symbol: SORCS2
 Mammalian Cell Selection: Neomycin
 Vector: pCMV6-AC-GFP (PS100010)
 E. coli Selection: Ampicillin (100 ug/mL)
 ORF Nucleotide Sequence: >RG229412 representing NM_020777
 Red=Cloning site Blue=ORF Green=Tags(s)

TTTTGTAATACGACTCACTATAGGGCGGCCGGGAATTCGTCGACTGGATCCGGTACCGAGGAGATCTGCC
 GCC**CGATCGCC**

ATGGCGCACCGGGGGCCCTCGCGCGCCTCGAAGGGCCCCGGCCCCACCGCCCGAGCCCCGAGCCCCGGGG
 CTCGCGCCCGCGCGCTCGCGCGCTCGCGCGCCTCCTGCTGCTGCTGCTGCTGCTGGGCGCTGCGG
 GGCGGGGGGGCGCTCCCTGAGCCCGGGCGCCTGGGTCTCACGCCAACTGACCCGGGTGCCGCGGAGC
 CCTCCCGGGGGCGCGCGGAGCCCGGTGGCGGGGAGGACCGGCAGGCGCGCGGCACGGAGCCAGGCGCCC
 CGGGTCCGAGTCCCGTCCCGTCTCTGGTCCCGGGGAGGACGGCGCCCGCCCGGGGTACCGGCGCTG
 GGAGCGGGCGCGCGCTGGCCGGAGTGGCTTCGCGGGCGCAGGTCTCGTTCATCAGCACGTCTGTCGTG
 CTCAAGGGGGACGCGACGACAACCAGGCGATGGTGCACCTGGACGGGCGAGAACAGCAGCGTGATCTTGA
 TCCTGACGAAGTACTACCACGCAGACATGGGGAAGTTCTGAAAAGTTCTCTGTGGCGGTATCAGATTT
 CGGGACGTCTACACCAAGCTCACCTCCAGCCTGGTGTACACCGTTCATCGACAATTTCTACATCTGC
 CCGACCAACAAGAGGAAGGTATCCTTGTGAGTCTCTCACTCAGTGACCGGGACCAGAGCCTATTCTCA
 GCGCAGACGAAGGCGCCACCTTTAGAAGCAGCCATTCCCTTCTCGTGGAACTCTGATTTTCCACCC
 TAAGGAGGAGGACAAGGTCTCGCTACACAAAGGAGAGCAAGCTCTACGTGTCTGACTTGGGAAA
 AAGTGGACTTCTGCAAGAGCGAGTGACCAAAGACCAGTGTCTGGTCTGTGCTGGGGTGGACGCTG
 ACCTGACTTGGTCCACGTGGAAGCCAAAGACCTCGGTGGAGATTTTCGTACGTACCTGCGCAATCCA
 CAATTGCTCCGAGAAGATGCTGACAGCCCCATTGCGAGGCCCATTTGACCACGGGTCTCTGACCGTGCAG
 GACGATTACATCTTCTTAAAGGCAACATCAGCAAACCAGACAAAACTACTCGTCTCTTATCGTCGAAATG
 AATTTGTCCTGATGAAGCTGCCGAAGTATGCAATGCAAAAGGATCTGCAGATCATCAGCAGGACGAGAG
 TCAGGTGTTCTGGCGGTGCAGGAGTGGTACCAGATGGACACCTACAACCTGTACCAGTCGGACCCACGG
 GGCGTGCCTACGCGTGGTGTGCAGGACGTGCGCAGCTCACGGCAGGCGGAGGAGCGTGTCTCATCG
 ACATCTGGAGGTGAGAGGGGTGAAAGGAGTCTTCCTGGCAAACCAAAAATTGATGGGAAAGTATGAC
 GCTTATAACCTACAACAAGGGCCGCGACTGGGATTACCTGAGGCCACCCAGCATGGACATGAATGGAAAA
 CCAACCACTGCAAGCCTCCAGACTGCCACCTGCACCTGCACCTGCGCTGGGCGAGACAACCCCTACGTAT
 CAGGCACCGTGCACCAAGGACACCGCCCCAGGCCTCATCATGGGTGCAGGTAACCTGGGCTCACAGCT



[View online >](#)

GGTGAATATAAAGAAGAAATGTACATCACGTCAGACTGTGGTCACACCTGGCGGCAGGTGTTTGAGGAA
 GAGCATCACATCCTGTACCTGGACCACGGCGCGTGATCGTGGCCATCAAAGACACCTCCATCCCTTTGA
 AGATCCTCAAGTTCAGTGTGGACGAGGGCCTCACCTGGAGCACGCAACTTCACCAGCACCTCGGTGTT
 TGTGGACGGGCTGCTGAGTGAGCCAGGGGACGAGACGCTGGTCATGACGGTCTTTGGCCACATCAGCTTC
 CGCTCCGATTGGGAGCTGGTCAAGGTGGACTCCGGCCCTCATTCTCCAGGCAGTGGCGGAGGAGGACT
 ACAGCTCCTGGGAGCTCCAACCTGCAGGGCGACCGCTGTATCATGGCCAGCAGAGAAGTTCCGGAA
 AAGAAAGTCCACGTCCTGGTGCATCAAGGGGAGGAGCTTACGTCGGCGCTCACGTCCCGGTGTGCGAG
 TGCCGGGACTCGACTTCTGTGCGACTACGGATTTGAGCGCTCCTCCTCAGAGTCCAGCACCAACA
 AGTGCTCTGCCAACTTCTGGTTTAAACCCATTGTCCCCGCCTGACGACTGTGCCCTGGGCCAGACCTACAC
 CAGCAGCCTTGGGTACCGGAAAGTGGTGTCCAACGTGTGTGAGGGTGGGTGGACATGCAGCAGAGTCAG
 GTGCAGCTGCAGTGCCCCCTCACGCCGCCCGGGCCTGCAGGTGAGCATTCAAGGCGAGGCGGTGGCCG
 TGCGGCCCTGGAGAGGACGTCCTGTTTGGTGGCAGGAGCAGGGTGTGTCCTGACTACCAAGTACCA
 GGTAGACCTTGGGACGGCTTCAAGGCCATGTACGTGAACCTTACTGACCGGGGAGCCATCCGGCAC
 CGCTACGAGAGCCCCGGCATCTACCGCGTGTCCGTGAGGCGAGAGAACACGGCAGGCCACGATGAGCGCG
 TGCTCTTTGTCCAGGTCAACTCCCCCTGCAGGCCCTTACTGGAGGTGTTTCTGTCTATTGGCCCTCAA
 CCAGGAGGTGAACCTCACAGCTGTGCTGCTCCCTTGAACCTAACCTCACCGTCTTCTACTGGTGGATC
 GGCCACAGCCTGCAGCCCCCTCTTTCCCTGGATAATTCTGTGACAACCGGTTTTTCGGACACGGCGACG
 TGCGTGTGACGGTGCAGGCCCTGTGGAACTCGGTGCTGCAGGACTCCAGGGTCTCCGTGTGCTGGA
 TCAATTTCAAGTCATGCCTCTGCAGTTTTCAAGGAGCTGGATGCCTACAACCCCAACCCCTGAGTGG
 AGGGAAGACGTGGGCCTGGTGGTCAACCGGCTGCTCTCAAGGAGACCAGCGTCCCTCAGGAGCTTCTGG
 TGACTGTGGTGAAGCCGGGGCTGCCACTTTGGCCGATCTGTACGTGCTCCTGCCCTCCAGGCCAC
 AAGGAAGAGGAGCCTCTCGAGTGATAAGAGGCTCGCCCATCCAGCAGGTGCTGAACGCACAGAAGATC
 AGCTTCTCCTCGGAGGCGGAGTCCGGTCTGGTGGCCCTGCGGGACACAGGCACAGGTGCTGAGCAGC
 TGGCGCGGCTGGCGGCTACTGGCGGTAGTGGTGTGTTTGTGTCATCGGGCTCTTCGCGGGGACCTT
 CATCCTCTACAAGTTCAAAGGAAACGGCCAGGACCGTGTACGCCAAATGCACAACGAGAAGGAG
 CAGGAGATGACCAGCCCTGTGAGTCACAGTGAGGACGTCCAGGGCGCTGTCCAGGGCAACCACTCAGGCG
 TGGTCTGAGCATCAACTCCCGAGAGATGCACAGCTACCTGGTGAGC

ACGCGTACGCGGCCGCTCGAG - GFP Tag - GTTTAA

Protein Sequence:

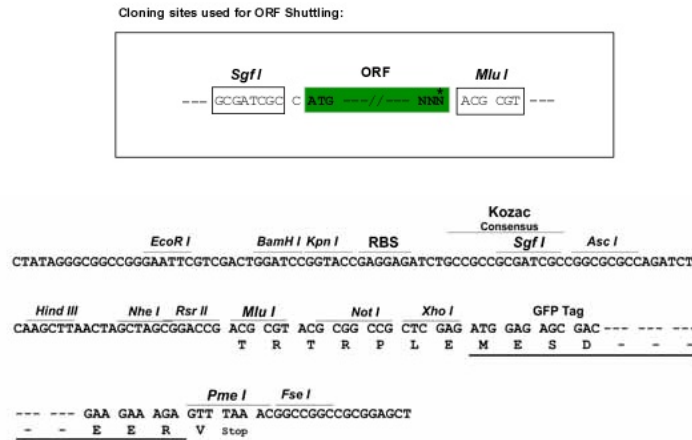
>RG229412 representing NM_020777
 Red=Cloning site Green=Tags(s)

MAHRGPSRASKGPGPTARAPSPGAPPPRSPRSRPLLLLLLLGACGAAGRSPEPGRLGPHAQLTRVPRS
 PPAGRAEPGGEDRQARGTEPGAPGSPGPAPGPGEDGAPAAGYRRWERAAPLAGVASRAQVSLISTSFV
 LKGDATHNQAMVHWTGENSSVILILTKYHADMGKVLSSLWRSSDFGTSYTKLTLQPGVTTVIDNFYIC
 PTNKRKIVLVSSSLSDRDQSLFLSADEGATFQKQPIPFVETLIFHPKEEDKVLAYTKESKLYVSSDLGK
 KWTLQLQERVTKDHFVFSVSGVDADPDLVHVEAQDLGGDFRYVTCAIHNCSEKMLTAPFAGPIDHGSLTVQ
 DDYIFFKATSANQTKYYVSYRRNEFVLMKLPKYALPKDLQIISTDESQVFAVQEWYQMDTYNLYQSDPR
 GVRYALVLQDVRSSRQAEESVLIDILEVRGVKGVFLANQKIDGKVMTLITYNKGRDWDYLPPSMDMNGK
 PTNCKPPDCHLHLRWADNPYVSGTVHTKDTAPGLIMGAGNLGSQLVEYKEEMYITSDCGHTWRQVFE
 EHHILYLDHGGVIVAIDKTSIPLKILKFSVDEGLTWSTHNTSTSVFVVDGLLSEPGDETLVMTVFGHISF
 RSDWELVKVDFRPSFSRQCGEEDYSSWELSNLQGDRCIMGQQRFRKRKSTSWICKGRSFTSALTSRVCE
 CRDSDFLCDYGFERSSSSESSTNKCSANFWFNPLSPPDDCALGQTYTSSLGYRKYVSNVCEGGVDMQSQ
 VQLQCPLTPRGLQVSIQGEAVAVRPGEDVLFVVRQEQQDVLTKYQVDLGDGFKAMYVNLTLTGEP
 IRHYESPGIYRVSVRAENTAGHDEAVLFVQVNSPLQALYLEVVPVIGLNQEVNLTAVLLPLNPNLTVFYW
 IGHSLQPLLSDNSVTTRFSDTGDVVRTVQAACGNSVLQDSRVLRLDQFQVMPQLFQSKELDAYNPNTPEW
 REDVGLVVTRLLSKETSVPQELLVTVVVKPGLPTLADLYVLLPPRPTRKRSLSSDKRLAATIQVLLNAQKI
 SFLLRGGVRVLVALRDTGTGAEQLGGGGYWAVVVLVFIGLFAAGAFILYKFKRKRPGRTVYAQMHNKE
 QEMTSPVSHSEVDQGAQVGNHSGVVLSINSREMHSYLVS

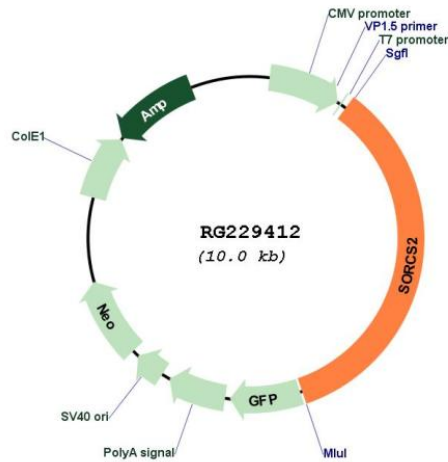
TRTRPLE - GFP Tag - V

Restriction Sites: SgfI-MluI

Cloning Scheme:



Plasmid Map:



ACCN: NM_020777

ORF Size: 3477 bp

OTI Disclaimer: The molecular sequence of this clone aligns with the gene accession number as a point of reference only. However, individual transcript sequences of the same gene can differ through naturally occurring variations (e.g. polymorphisms), each with its own valid existence. This clone is substantially in agreement with the reference, but a complete review of all prevailing variants is recommended prior to use. [More info](#)

OTI Annotation: This clone was engineered to express the complete ORF with an expression tag. Expression varies depending on the nature of the gene.

Components:	The ORF clone is ion-exchange column purified and shipped in a 2D barcoded Matrix tube containing 10ug of transfection-ready, dried plasmid DNA (reconstitute with 100 ul of water).
Reconstitution Method:	<ol style="list-style-type: none">1. Centrifuge at 5,000xg for 5min.2. Carefully open the tube and add 100ul of sterile water to dissolve the DNA.3. Close the tube and incubate for 10 minutes at room temperature.4. Briefly vortex the tube and then do a quick spin (less than 5000xg) to concentrate the liquid at the bottom.5. Store the suspended plasmid at -20°C. The DNA is stable for at least one year from date of shipping when stored at -20°C.
RefSeq:	<u>NM_020777.3</u>
RefSeq Size:	6061 bp
RefSeq ORF:	3480 bp
Locus ID:	57537
UniProt ID:	<u>Q96PQ0</u>
Cytogenetics:	4p16.1
Protein Families:	Druggable Genome, Transmembrane
Gene Summary:	<p>This gene encodes one family member of vacuolar protein sorting 10 (VPS10) domain-containing receptor proteins. The VPS10 domain name comes from the yeast carboxypeptidase Y sorting receptor Vps10 protein. Members of this gene family are large with many exons but the CDS lengths are usually less than 3700 nt. Very large introns typically separate the exons encoding the VPS10 domain; the remaining exons are separated by much smaller-sized introns. These genes are strongly expressed in the central nervous system. [provided by RefSeq, Jul 2008]</p>