

Product datasheet for **RG229406**

MEGF11 (NM_032445) Human Tagged ORF Clone

Product data:

| | |
|---------------------------|---|
| Product Type: | Expression Plasmids |
| Product Name: | MEGF11 (NM_032445) Human Tagged ORF Clone |
| Tag: | TurboGFP |
| Symbol: | MEGF11 |
| Mammalian Cell Selection: | Neomycin |
| Vector: | pCMV6-AC-GFP (PS100010) |
| E. coli Selection: | Ampicillin (100 ug/mL) |
| ORF Nucleotide Sequence: | >RG229406 representing NM_032445 Red=Cloning site Blue=ORF Green=Tags(s) |

TTTTGTAATACGACTCACTATAGGGCGGCCGGAATTCGTCGACTGGATCCGGTACCGAGGAGATCTGCC
GCC**CGATCGCC**

ATGGTGCTCTCCCTGACGGGGCTCATTGCCTTCTCCTTCTGCAAGCCACCCTTGCCCTGAACCCCGAGG
ACCCCAACGTGTGCAGCCACTGGGAGAGCTATGCTGTGACTGTCCAGGAATCGTATGCACACCCCTTCGA
TCAGATCTATTACACACGATGCACAGACATCCTCAACTGGTTCAAGTGCACCAGGCACCCGGATCAGTTAT
AAGACGGCGTATCGGAGAGGCCCTCCGGACCATGTACCGGGGAGGTCCCAGTGTGCCCTGGCTACTATG
AGAGCGGAGACTTCTGCATACCCTGTGTACGGAGGAGTGTGTGCACGGCCGCTGCGTTTTCCCGGACAC
CTGCCACTGCGAGCCTGGCTGGGAGGGCCGACTGCTCCAGCGCTGCGACAGCGACCCTGGGGGCC
CACTGCAGCAACCGGTGCCAGTGCAGAACGGCGCCCTGTGTAACCCCATCACAGGCGCCTGCGTGTGCG
CCGCCGGCTTCCGTGGATGGCGCTGCGAGGAGCTCTGCGCACCTGGCACCCACGGCAAGGGATGCCAGCT
GCCGTGCCAGTGCCGACACGGTGCAGCTGCGACCCCGCGCGGCGAGTGCCTCTGCGCACCTGGCTAC
ACCGGCGTCTACTGCGAGGAGCTGTGCCCTCTGGGAGCCATGGAGTCACTGTGAGCTGCGCTGCCCT
GTCAGAATGGGGCACCTGCCACCACATCACTGGCGAGTGTGCCTGCCCCCAGGCTGGACGGGAGCAGT
GTGTGCCAGCCCTGCCACCAGGGACATTTGGCCAGAAGTGCAGCCAGGATTGCTTGCACCATGGA
GGCAGTGTGACCACGTGACTGGACAGTGCACCTGTACAGCTGGATACATGGGGGACAGGTGCCAAGAGG
AGTGCCCTTCGGTCTTCGGCTCCAGTGTACAGCACTGTGACTGCCACAATGGGGGCGAGTGTC
ACCCACCACGGGTGCCTGCGAGTGTGAGCCTGGCTACAAGGGCCACGCTGCCAGGAGCGACTGTGCCCG
GAGGGCTGCATGGCCCAGGCTGCACCCTGCCCTGCCCTGTGACGCTGACAACACCATCAGCTGCCACC
CAGTAAGTGGAGCTTGTACCTGCCAGCCAGGCTGGTCTGGTACCAGTGCATGAATCCTGCCCTGTTGG
CTACTATGGCGATGGCTGCCAGCTGCCTTGACCTGTGAGTGGCGCGGACTGCCACAGCATCACTGGG
GGCTGCACTTGTGCTCCGGGCTTCATGGGAGAGGTCTGTGCCGTTTCTGTGACAGAGGGACCTATGGCC
CCAAGTGTGCTCCATCTGTAGCTGTACAATGGTGGCACCTGCTCCCCAGTAGAGTGGCTCCTGTACCTG
CAAGGAAGGGTGGCAGGGCTGGACTGCACCTGCCATGTCCCAGTGGGACGTGGGGCTGAACGCAAC
GAGAGTGCACCTGTGCAATGGGGCAGCTGCAGCCCATAGACGGCTCCTGCTCCTGCACCTCGCTGGCT
GGCTGGGAGACCTGTGAGCTGCCTTGCCGGATGGCACATTTGGGCTGAACTGCAGTGAACACTGTGA



[View online »](#)

```
CTGCAGCCATGCTGATGGATGTGACCCCGTCACAGGCCACTGCTGCTGCCTGGCCGGATGGACAGGCATC
CGCTGTGACAGCACGTGTCCACCTGGCCGCTGGGGCCCAACTGCTCTGTCTCCTGCAGCTGTGAGAATG
GAGGCTCCTGCTCCCCAGAGGATGGGAGCTGCGAGTGTGCCCTGGCTTCCGAGGACCCTTATGCCAGAG
AATCTGCCCCCTGGGTTCTATGGCCACGGCTGCGCCAGCCATGCCCTCTGCGTGCACAGCAGCAGG
CCCTGCCACCACATCAGCGGCATCTGTGAGTGCCTCCCAGGATTCTTGGAGCTCTTGAACCAAGTGT
GTGCTGGAGGATACTTTGGGCAGGACTGTGCCAGCTCTGCTCCTGTGCCAACACGGGACCTGCAGCCC
TATCGATGGCTCCTGCCAGTGTCTTCTGGATGGATTGGCAAGGACTGCTCACAGGCTTGCCACCCGGG
TTCTGGGGCCCCGCTGCTTCCACGCATGCAGCTGCCACAACGGGGCAGCTGCAGCGCCGAGGACGGGG
CCTGCCACTGCACCCCTGGCTGGACTGGACTCTTCTGCACACAGCGCTGCCAGCAGCATTTTTTGGGAA
GGACTGTGGGCGCGTATGCCAGTGTGAGAATGGCGCCAGCTGTGACCACATCAGTGGCAAGTGCACCTGC
CGCACAGGCTTACCAGGCAACACTGTGAGCAGAGATGTGCCAGGAACCTTTGGCTATGGGTGCAGC
AGCTATGTGAGTGCATGAACAACCCACCTGTGACCATGTACCAGGACCTGTTACTGCAGCCCTGGCTT
CAAAGGAATCAGGTGTGACCAAGCTGCCCTCATGATGGAGGAGCTGAATCCCTACACCAAGATCAGCCCA
GCACTGGGTGCAGAGCGGCACTCGGTGGGTGCTGTACAGGCATCATGCTCCTGTATTCTCATTGTGG
TGCTGCTGGGCTATTTGCTGCGATCGGCGGGCAGAAAGAGAAGGGCCGAGACTGGCTCCCGTGT
CTCTACACACCTGCCATGAGGATGACCAGCAGCAGCTACTCCCTCCTCAGGTGCTTGTGGAAATGGATAGA
CGTCAGAACACATACATTATGGACAAAGGCTTCAAAGATTACATGAAAGAAATCCGTGTGCAGTCTAGTA
CTTGTTCCCTTGAATAGCAGTGAACCCCTTACGCCACAATTAAGGACCCACCCATCCTCAGCTGCAAGCT
TCCAGAAAGCAGCTATGTAGAAATGAAGTGCCTGTGCACATGGGGTCTCCGTACACAGATGTGCCATCC
TTGTGACATCTAATAAAAAATATATGAAGTTGAGCCACAGTCAAGTGTGGTCCAAGAAGGTTGCGGTC
ATAACTCCAGCTATATCCAGAAATGCATACGACCTACCTAGGAACAGCCATATTCTGGTCATTATGACCT
CCTCCCAGTAAGACAGAGCCCTGCCAATGGGCCGTCACAGGACAAGCAATCT
```

ACGCGTACGCGGCCGCTCGAG - GFP Tag - GTTTAA

Protein Sequence:

>RG229406 representing NM_032445
 Red=Cloning site Green=Tags(s)

```
MVLSLTGLIAFSFLQATLALNPEDPNVCSHWESYAVTVQESYAHFPDQIYYTRCTDILNWFKCTRHRISY
KTAYRRGLRTMYRRRSQCCPGYYESGDFCIPLCTEECVHGRCVSPDTHCEPGWGGPDCSSGCDSDHWGP
HCSNRCQONGALCNPIITGACVCAAGFRGWRCEELCAPGTHGKGCQLPCQCRHGASCDPRAGECLCAPGY
TGVYCEELCPPGSHGAHCELRPCQNGGTCHHITGECACPPGWTGAVCAQPCPPGTFGQNCSDQCPCHHG
GQCDHVTGQCHCTAGYMGDRQEECPFGSFGFQCSQHCDCHNGGQCSPTTGACECEPGYKGPCRQERLCP
EGLHGPGCTLPCPCDADNTISCHPVTGACTCQPGWSGHHCNESCVPVGYGDGCQLPCTCQNGADCHSITG
GCTCAPGFMGEVCAVSCAAGTYGPNCSICSCNNGGTCSPVDGSCCKEHWQGLDCTLPCPSGTWGLNCN
ESCTCANGAACSPIDGSCSTPGWLGDTCELPDGTGFLNCSEHDCSHADGCDPVTGHCCLAGWTGI
RCDSTCPPGRWGPNCVSCSCENGGSCSPEDGSCECAPGFRGPLCQRICPPGFYHGCAQPCPLCVHSSR
PCHHISGICECLPGFSGALCNQVCAGGYFGQDCAQLCSCANNGTCSPIIDGSCQCFPGWIGKDCSQACPPG
FWGPACFHACSCHNGASCSAEDGACHCTPGWTGLFCTQRCPAAFFGKDCGRVCQCNQASCDHISGKCTC
RTGFTGQHCEQRCAPGTFYGCQQLCECMNNTCDHVTGTCYCSPGFKGIRCDQAALMMEELNPHYTKISP
ALGAERHSVGAVTGIMLLLFLIVVLLGLFAWRRRQKEKGRDLAPRVSYTPAMRMTSTDYSLSGACGMDR
RQNTYIMDKGFKDYMKESVCSSTCSLNSENPHYATIKDPPILTCKLPESYVEMKSPVHMGSPTYDVPV
LSTSNKNIYEVEPTVSVVQEGCGHNSSYIQNAYDLPRNSHIPGHYDLLPVRQSPANGPSQDKQS
```

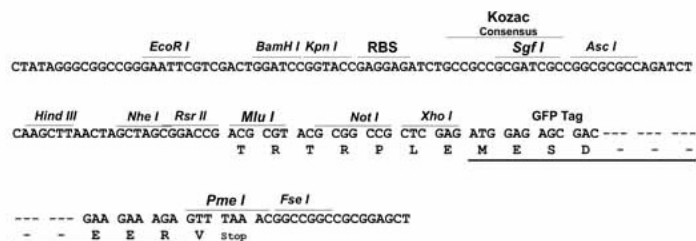
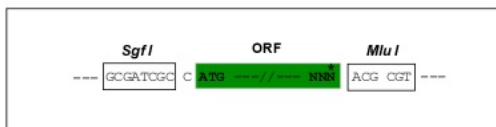
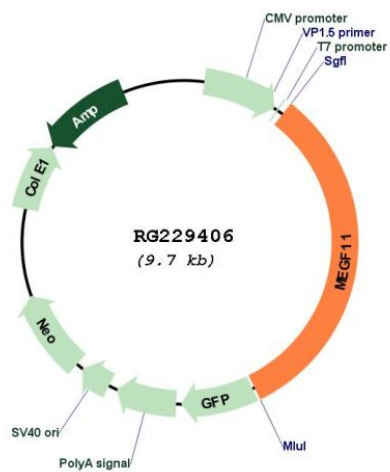
TRTRPLE - GFP Tag - V

Restriction Sites:

SgfI-MluI

Cloning Scheme:

Cloning sites used for ORF Shutting:


Plasmid Map:


ACCN: NM_032445

ORF Size: 3132 bp

| | |
|-------------------------------|---|
| OTI Disclaimer: | The molecular sequence of this clone aligns with the gene accession number as a point of reference only. However, individual transcript sequences of the same gene can differ through naturally occurring variations (e.g. polymorphisms), each with its own valid existence. This clone is substantially in agreement with the reference, but a complete review of all prevailing variants is recommended prior to use. More info |
| OTI Annotation: | This clone was engineered to express the complete ORF with an expression tag. Expression varies depending on the nature of the gene. |
| Components: | The ORF clone is ion-exchange column purified and shipped in a 2D barcoded Matrix tube containing 10ug of transfection-ready, dried plasmid DNA (reconstitute with 100 ul of water). |
| Reconstitution Method: | <ol style="list-style-type: none">1. Centrifuge at 5,000xg for 5min.2. Carefully open the tube and add 100ul of sterile water to dissolve the DNA.3. Close the tube and incubate for 10 minutes at room temperature.4. Briefly vortex the tube and then do a quick spin (less than 5000xg) to concentrate the liquid at the bottom.5. Store the suspended plasmid at -20°C. The DNA is stable for at least one year from date of shipping when stored at -20°C. |
| RefSeq: | NM_032445.2 , NP_115821.2 |
| RefSeq Size: | 5914 bp |
| RefSeq ORF: | 3135 bp |
| Locus ID: | 84465 |
| UniProt ID: | A6BM72 |
| Cytogenetics: | 15q22.31 |
| Domains: | EGF_Lam, EGF, EGF |
| Protein Families: | Transmembrane |
| Gene Summary: | May regulate the mosaic spacing of specific neuron subtypes in the retina through homotypic retinal neuron repulsion. Mosaics provide a mechanism to distribute each cell type evenly across the retina, ensuring that all parts of the visual field have access to a full set of processing elements (By similarity).[UniProtKB/Swiss-Prot Function] |