

## Product datasheet for **RG229352**

### **MST1 (NM\_020998) Human Tagged ORF Clone**

#### **Product data:**

Product Type:	Expression Plasmids
Product Name:	MST1 (NM_020998) Human Tagged ORF Clone
Tag:	TurboGFP
Symbol:	MST1
Synonyms:	D3F15S2; DNF15S2; HGFL; MSP; NF15S2
Mammalian Cell Selection:	Neomycin
Vector:	pCMV6-AC-GFP (PS100010)
E. coli Selection:	Ampicillin (100 ug/mL)



[View online »](#)

**ORF Nucleotide Sequence:**

>RG229352 representing NM\_020998  
 Red=Cloning site Blue=ORF Green=Tags(s)

TTTTGTAATACGACTCACTATAGGGCGGCCGGAATTCGTCGACTGGATCCGGTACCGAGGAGATCTGCC  
 GCC**CGGATCGCC**

ATGGGGCTGTGGTGGGTACAGTGCAGCCTCCAGCCAGAAGGATGGGGTGGCTCCCACTCCTGCTGCTTC  
 TGAATCAATGCTTAGGGGTCCCTGGGCAGCGCTCGCCATTGAATGACTTCCAAGTGTCCGGGGCACAGA  
 GCTACAGCACCTGCTACATGCGGTGGTGCCTGGCCCTTGGCAGGAGGATGTGGCAGATGCTGAAGAGTGT  
 GCTGGTCGCTGTGGGCCCTTAATGGACTGCCGGGCCTTCCACTACAACGTGAGCAGCCATGGTTGCCAAC  
 TGCTGCCATGGACTCAACTCGCCCCACAGGAGGCTGCGGCGTTCTGGGCGCTGTGACCTTTCCAGAA  
 GAAAGACTACGTACGACCTGCATCATGAACAATGGGGTGGGTACCGGGGCACCATGGCCACGACCGTG  
 GGTGGCCTGCCCTGCCAGGCTTGAGCCACAAGTCCCAAATGATCACAAGTACACGCCACTCTCCGGA  
 ATGGCCTGGAAGAGAACTTCTGCCGTAAACCTGATGGCGACCCCGGAGGTCTTGGTGTACACAACAGA  
 CCCTGCTGTGCGCTTCCAGAGCTGCGGCATCAAATCCTGCCGGGAGGCCGCGTGTGTCTGGTGAATGGC  
 GAGGAATACCGCGCGCGGTAGACCCGCAGGAGTCAAGGCGCGAGTGCCAGCGCTGGGATCTTCAGCACC  
 CGCACCAGCACCCCTTCGAGCCGGGCAAGTTCCTCGACCAAGGTCTGGACGACAATATTGCCGGATCC  
 TGACGGCTCCGAGCGGCCATGGTGTACTACTACGGATCCGCAGATCGAGCGAGAGTTCTGTGACCTCCCC  
 CGCTGCGGGTCCGAGGCACAGCCCCGCCAAGAGGCCACAACGTGTCAGTCTTCCGCGGGAAGGGTGAGG  
 GCTACCGGGGCACAGCCAATACCACCACTGCGGGCGTACCTTCCAGCGTTGGGACGCGCAAATCCCCGA  
 TCAGCACCGATTTACGCCAGAAAAATACCGGTGCAAGACCTTCGGGAGAACTTCTGCCGGAACCCCGAC  
 GGCTCAGAGGCGCCCTGGTGTTCACACTGCGGCCCGGCATGCGCGCGCCCTTTTGTACCAGATCCGGC  
 GTTGTACAGACGACGTGCGGCCCGGACTGCTACCAGCGCGCAGGGGAGCAGTACCGCGGACGGTCCAG  
 CAAGACCCGCAAGGGTGTCCAGTGCCAGCGCTGGTCCGCTGAGACGCCGCAAGCCGAGTTCAGGTTT  
 ACCTCCGAACCGCATGCACAACCTGGAGGAGAATTCTGCCGGAACCCAGATGGGGATAGCCATGGGCCCT  
 GGTGTACACGATGGACCAAGGACCCCATTCGACTACTGTGCCCTGCGACGCTGCGCTGATGACCAGCC  
 GCCATCAATCCTGGACCCCCAGACCAGGTGCAGTTTGAAGAGTGTGGCAAGAGGGTGGATCGGCTGGAT  
 CAGCGGCGTTCCAAGCTGCGCGTGGTGGGGGCCATCCGGGCAACTCACCTGGACAGTCACTTGGCGGA  
 ATCGGCAGGGCCAGCATTTCTGCCGGGGTCTCTAGTGAAGGAGCAGTGGATACTGACTGCCCGGCAGTG  
 CTTCTCCTCCTGCCATATGCCTCTCACGGGCTATGAGGTATGGTGGGCACCCTGTTCCAGAACCCACAG  
 CATGGAGAGCCAAGCCTACAGCGGGTCCCAGTAGCCAAGATGGTGTGTGGGCCCTCAGGCTCCCAGCTTG  
 TCCTGCTCAAGCTGGAGAGATCTGTGACCCTGAACCAGCGTGTGGCCCTGATCTGCTGCCCCCTGAATG  
 GTATGTGGTGCCTCCAGGGACCAAGTGTGAGATTGCAGGCTGGGGTGGAGACCAAGGTACGGGTAATGAC  
 ACAGTCTAAATGTGGCCTTGTGAATGTATCTCCAACCAAGGAGTGAACATCAAGCACCGAGGACGTTG  
 TGCGGGAGAGTGAATGTGCACTGAGGGACTGTTGGCCCTGTGGGGGCTGTGAGGGTGACTACGGGGG  
 CCCACTTGCTGCTTTACCCACAACCTGCTGGGTCTGGAAGGAATTATAATCCCCAACCGAGTATGCGCA  
 AGGTCCCCTGGCCAGCTGTCTTACGCGTGTCTGTGTTTGTGGACTGGATTCACAAGGTCATGAGAC  
 TGGGT

AG**CGGACCG**ACGCGTACGCGGCCGCTCGAG - GFP Tag - GTTTAA

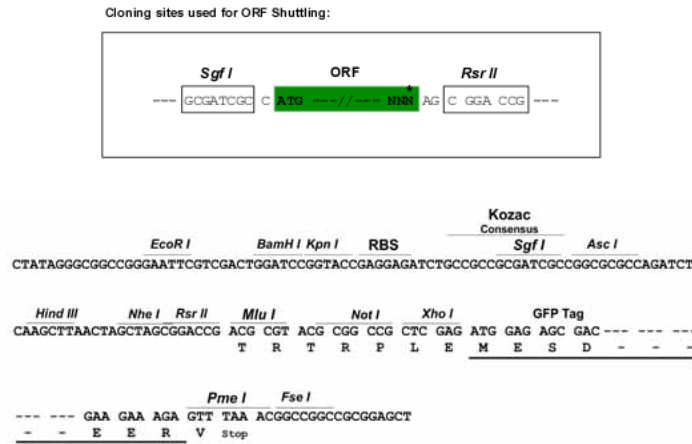
Protein Sequence: >RG229352 representing NM\_020998  
 Red=Cloning site Green=Tags(s)

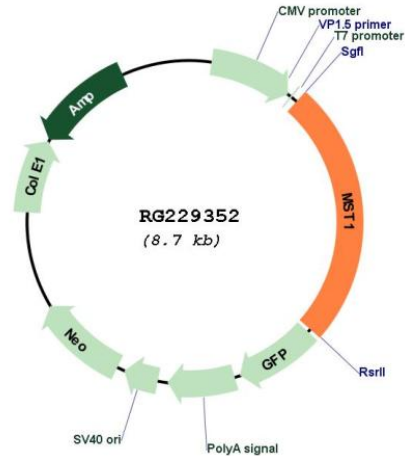
MGLWWVTVQPPARRMGWLPLLLLLTQCLGVPQGQRSPLNDFQVLRGTELQHLLHAVVPGPWQEDVADAEEC  
 AGRCGPLMDCRAFHYNVSSHGCQLLPWTQHSPHTRLRRSGRCDLFQKKDYVRTCIMNNGVGYRGTMTTV  
 GGLPCQAWSHKFPNDHKYPTLNRNGLEENFCRNPDPDGGPWCYTTDPAVRFQSCGIKSCREAACVWCNG  
 EEYRGAVDRTESGRECQRWDLQHPHQHPFEPGKFLDQGLDDNYCRNPDGSERPWCYTTDPQIEREFCDLP  
 RCGSEAQPRQEATTVSCFRGKGEYRGTANTTTAGVPCQRWDAQIPHQHRTPEKYACKDLRENFCRNP  
 GSEAPWCFTLRPGMRAAFYQIRRCTDDVVRPQDCYHGAGEQYRGTVSKTRKGVQCQRWSAETPHKPQFTF  
 TSEPHAQLEENFCRNPDGSDHGPWCYTMDPRTPFDYCALRRCADDQPPSILDPPDQVQFEKCGKRVDRLD  
 QRRSKLRVVGHPGNPWTVSLRNRQGGHF CGGSLVKEQWILTARQCFSSCHMPLTG YEVWL GTLFQNPQ  
 HGEP SLQRVPVAKMVCGPSGSQLVLLK LERSVTLNQRVALICLPPEWYVVP GTKCEIAGWGETKGTGND  
 TVLNVALLNVISNQECNIKHRGRVRESEMCTEGLLAPVGACEGDYGGPLACFTHNCWVLEGIIIPNRVCA  
 RSRWPAVFRVSVFVDWIHKVMRLG

SGP<sup>TRRRLE</sup> - GFP Tag - V

Restriction Sites: SgfI-RsrII

Cloning Scheme:



**Plasmid Map:**


**ACCN:** NM\_020998

**ORF Size:** 2175 bp

**OTI Disclaimer:** The molecular sequence of this clone aligns with the gene accession number as a point of reference only. However, individual transcript sequences of the same gene can differ through naturally occurring variations (e.g. polymorphisms), each with its own valid existence. This clone is substantially in agreement with the reference, but a complete review of all prevailing variants is recommended prior to use. [More info](#)

**OTI Annotation:** This clone was engineered to express the complete ORF with an expression tag. Expression varies depending on the nature of the gene.

**Components:** The ORF clone is ion-exchange column purified and shipped in a 2D barcoded Matrix tube containing 10ug of transfection-ready, dried plasmid DNA (reconstitute with 100 ul of water).

**Reconstitution Method:**

1. Centrifuge at 5,000xg for 5min.
2. Carefully open the tube and add 100ul of sterile water to dissolve the DNA.
3. Close the tube and incubate for 10 minutes at room temperature.
4. Briefly vortex the tube and then do a quick spin (less than 5000xg) to concentrate the liquid at the bottom.
5. Store the suspended plasmid at -20°C. The DNA is stable for at least one year from date of shipping when stored at -20°C.

**RefSeq:** [NM\\_020998.3](#), [NP\\_066278.3](#)

**RefSeq Size:** 2348 bp

**RefSeq ORF:** 2178 bp

**Locus ID:** 4485

UniProt ID: [P26927](#)

Cytogenetics: 3p21.31

Domains: KR, Tryp\_SPC, PAN, PAN\_AP

Protein Families: Druggable Genome

**Gene Summary:** The protein encoded by this gene contains four kringle domains and a serine protease domain, similar to that found in hepatic growth factor. Despite the presence of the serine protease domain, the encoded protein may not have any proteolytic activity. The receptor for this protein is RON tyrosine kinase, which upon activation stimulates ciliary motility of ciliated epithelial lung cells. This protein is secreted and cleaved to form an alpha chain and a beta chain bridged by disulfide bonds. [provided by RefSeq, Jan 2010]