

Product datasheet for **RG229321**

ARHGAP25 (NM_001007231) Human Tagged ORF Clone

Product data:

Product Type:	Expression Plasmids
Product Name:	ARHGAP25 (NM_001007231) Human Tagged ORF Clone
Tag:	TurboGFP
Symbol:	ARHGAP25
Synonyms:	HEL-S-308; KAIA0053
Mammalian Cell Selection:	Neomycin
Vector:	pCMV6-AC-GFP (PS100010)
E. coli Selection:	Ampicillin (100 ug/mL)



[View online »](#)

ORF Nucleotide Sequence:

>RG229321 representing NM_001007231
 Red=Cloning site Blue=ORF Green=Tags(s)

TTTTGTAATACGACTCACTATAGGGCGGCCGGAATTCGTCGACTGGATCCGGTACCGAGGAGATCTGCC
 GCC**CGGATCGCC**

ATGTCCTAAAATTGCCAAGGAAGTGGGATTTCAACCTGAAAGTGGAGGCTGCGAAAATAGCTCGGTCAA
 GGAGTGTGATGACTGGCGAGCAGATGGCTGCCTCCATCCATCGTCCACCCCAACCCGCTGGAGAGGCC
 CATCAAGATGGGCTGGCTGAAGAAGCAGAGTCCATCGTGAAGAAGTGGCAGCAGAGTACTTTGTGCTG
 AGGGCGCAGCAGCTCTACTACTACAAGGATGAAGAGGACACGAAGCCCCAGGGCTGCATGTATCTACCAG
 GATGTACAATCAAGGAGATCGCCACAAACCCAGAAGAAGCTGGGAAGTTTGTCTTTGAAATCATTCCAGC
 CTCATGGGACCAGAATCGCATGGGACAGGACTCCTATGTCCTCATGGCCAGCTCTCAGGCGGAGATGGAG
 GAGTGGTTAAATTCCTCAGGAGAGTTGCTGGCACACCCTGTGGAGCAGTGTGGCCAGCGCTTGATG
 AGACTGTGGCCTATGAACAGAAATTCGGCCCCATCTGGTGCCCATCTGGTGGAGAAATGTGCAGAGTT
 CATCTGGAGCAGGCCGGAATGAAGAGGGCATCTCCGTCTGCCTGGGAGGACAACTGGTGAAGCAG
 CTGAGAGACGCTTTTGTGCTGGGGAGCGCCCTCCTTTGACAGAGACACAGATGTGCACACTGTGGCTT
 CCCTGTTAAAGCTCTACCTCCGAGACCTCCCAGAGCCCGTGGTCCCTGGAGCCAGTACGAAGGGTTCCT
 GCTCTGTGGGAGCTCACGAATGCGGATGAGGCAAAGGCTCAGCAGGAGTTGATGAAGCAGCTCTCCATC
 TTCTCGTGACAATAAGTCTCTGAGCTACATCTGCAGGTTCTACATGAAATACAGCTGAAGTGTG
 CTGTTAAACAAGATGAGTGTGGACAACCTGGCTACTGTGATTGGTGTGAATCTCATCAGGTCGAAGTTCGA
 AGACCTGCCGTGATCATGAGAGGGACTCCTCAGATCAAAGAGTGTACTATGATGATCAGAGACCAT
 GAAGTCTCTTCCCAAGTCCAAGGATATACCCCTGTACCCCTGCCAGAAAAATGACCCCAAGAAAG
 CTCCAGTGGCCCGAAGCTCTGTAGGCTGGGATGCCACTGAAGACCTCCGAATTTCTAGGACAGACAGTT
 CAGTAGCATGACAAGCGACTCTGATACAACCAGCCACCAGGACAGCAGCCGAGCGATGCGTTTCCGGAG
 GACAGCAGCAAAGTACCCAGGAAAAGCCAGGAGACTGGAATAATGCAATCTCGTAAAAGGACTCAAACAC
 TCCCTAACCGAAATGTTTCTTGACATCAGTTTTCAGGGTGCCAAACAGCAGCAAATGGAGATCTTTAA
 AAATGAATTCTGGTCGCCTTCTCAGAGGCTAAGGCAGGGGAAGGGCACAGGAGAACGATGTCTCAAGAC
 TTGCGCAACTTTCTGACTCCCAACGGACTTCCACCTACGATAACGTCCCTTCCCTGCCAGGGTCCCCTG
 GGGAGGAAGCCAGTGCCTCTTCCCAAGCCTGTGACTCCAAGGGAGATACTCTTGCCAGTCCAAACTC
 TGAACCTGGCCCTGAAAAAAGAACTCTGGAGAAGAGAAATGATTCTTTGCAGAGGATGGTCCAAGAG
 CTACGAAAGGAAATAGAAACACAGAAGCAAATGTATGAGGAACAGATTAACCTTGGAGAGGAAATTT
 ATGACGTTTGGGCTAAAGTGGTGAAGGCTCAATGAAGAAGTGGAGAAGGAAAAGAAAGTCTGCAGCCCT
 AGAGATCAGCCTCCGCAACATGGAGCGCTCCCGGAGGATGTTGAGAAGGGAACAGGCCTTGGAGAA
 GAAGTCAAGGAATTTGTCAAATCCATGAAGGAACCAAGACCGAGGCT

ACGCGTACGCGGCCGCTCGAG - GFP Tag - GTTTAA

Protein Sequence:

>RG229321 representing NM_001007231
 Red=Cloning site Green=Tags(s)

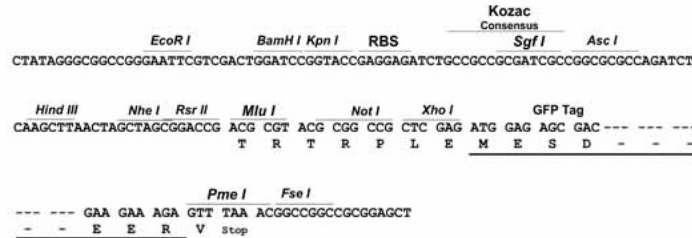
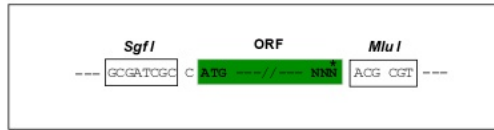
MSLKLPRNWFNFKVEAAKIARSRVMTGEQMAAFHPSSTPNPLERPIKMGWLKKQRSIVKNWQQRVFL
 RAQQLYYYKDEEDTKPQGCMYLPGCTIKEIATNPEEAGKFVFEIIPASWDQNRMGQDSYVLMASQAEME
 EWWKFLRRVAGTPCGAVFGQRLDETVAVEQKFGPHLVPILVEKCAEFILEHGRNEEGIFRLPGQDNLVKQ
 LRDAFDAGERPSFDRDTHVHTVASLLKLYLRDLPEPVVPSQYEGFLLCGQLTNADEAKAQQLMKQLSI
 LPRDNYSLLSYICRFLHEIQLNCAVNMKMSVDNLATVIGVNLIRSKVEDPAVIMRGTPQIQRVMTMMIRDH
 EVLFPKSKDIPLSPPAQKNDPKKAPVARSSVGDATEDLRSRTDSFSSMTSDSDTTSPTGQQPSDAFPE
 DSSKVPREKPGDWKMQSRKRTQLPNRKCFLTSAFQGANSSKMEIFKNEFWSPSSEAKAGEGHRRTMSQD
 LRQLSDSQRSTSYDNVPSLPGSPGEEASALSSQACDSKGDTLASPNSETGPGKKNSEEEIDSLQRMVQE
 LRKEIETQKQMYEEQIKNLEKENYDVWAKVVRLLNEELEKEKKSAALEISLRNMERSREDVEKRNKALEE
 EVKEFVKSMKEPKTEA

TRTRPLE - GFP Tag - V

Restriction Sites: SgfI-MluI

Cloning Scheme:

Cloning sites used for ORF Shutting:



ACCN: NM_001007231

ORF Size: 1938 bp

OTI Disclaimer: The molecular sequence of this clone aligns with the gene accession number as a point of reference only. However, individual transcript sequences of the same gene can differ through naturally occurring variations (e.g. polymorphisms), each with its own valid existence. This clone is substantially in agreement with the reference, but a complete review of all prevailing variants is recommended prior to use. [More info](#)

OTI Annotation: This clone was engineered to express the complete ORF with an expression tag. Expression varies depending on the nature of the gene.

Components: The ORF clone is ion-exchange column purified and shipped in a 2D barcoded Matrix tube containing 10ug of transfection-ready, dried plasmid DNA (reconstitute with 100 ul of water).

- Reconstitution Method:**
1. Centrifuge at 5,000xg for 5min.
 2. Carefully open the tube and add 100ul of sterile water to dissolve the DNA.
 3. Close the tube and incubate for 10 minutes at room temperature.
 4. Briefly vortex the tube and then do a quick spin (less than 5000xg) to concentrate the liquid at the bottom.
 5. Store the suspended plasmid at -20°C. The DNA is stable for at least one year from date of shipping when stored at -20°C.

RefSeq: [NM_001007231.3](#)

RefSeq Size: 3020 bp

RefSeq ORF: 1941 bp

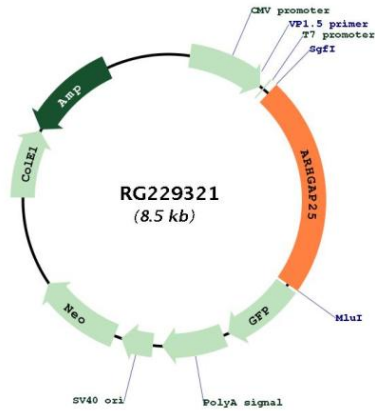
Locus ID: 9938

UniProt ID: [P42331](#)

Cytogenetics: 2p13.3

Gene Summary: ARHGAPs, such as ARHGAP25, encode negative regulators of Rho GTPases (see ARHA; MIM 165390), which are implicated in actin remodeling, cell polarity, and cell migration (Katoh and Katoh, 2004 [PubMed 15254788]).[supplied by OMIM, Mar 2008]

Product images:



Circular map for RG229321