

## Product datasheet for **RG229315**

### **DACT3 (NM\_145056) Human Tagged ORF Clone**

#### **Product data:**

Product Type:	Expression Plasmids
Product Name:	DACT3 (NM_145056) Human Tagged ORF Clone
Tag:	TurboGFP
Symbol:	DACT3
Synonyms:	DAPPER3; RRR1
Mammalian Cell Selection:	Neomycin
Vector:	pCMV6-AC-GFP (PS100010)
E. coli Selection:	Ampicillin (100 ug/mL)



[View online »](#)

**ORF Nucleotide Sequence:**

>RG229315 representing NM\_145056  
 Red=Cloning site Blue=ORF Green=Tags(s)

TTTTGTAATACGACTCACTATAGGGCGGCCGGAATTCGTCGACTGGATCCGGTACCGAGGAGATCTGCC  
 GCC**GCGATCGCC**

ATGATCCGGGCTTCTCGTTCCCGGTGAGCCCTGAGCGGGCCGGCTGCGGGGCTGGCTGGAGGGTACGC  
 TGGCCGGGCTCTGCGAGTTACATTGGCTCCGGGAGAGGCAGGAGTACCGGTGCAGCAGGCGCTGCGGCT  
 GGCCAGCCCGAATGGGGGCGCCGAGGCCGAGGACGAGGAGGACGCCGATGAGGATGAAGATGCGGCG  
 GCGGCGCGCCGGGCCGACGCGCCCTGGAGGAGCAGCTGGAGGCCCTGCCTGGTCTCGTCTGGGACCTGG  
 GACAGCAGCTGGGAGACCTGAGCCTGGAGTCTGGGGGCTGGAACAGGAGAGCGGGCGTAGCTCGGGCTT  
 CTATGAAGATCCCAGCTCTACAGGAGTCCAGATTACCACCCTCAACCTTCTGTGGGACAGTGGCTTC  
 TCTGGATCCAGCTCCTATGGTCGCTGGTCCCTCTGAGCCCCGGGCATCTATGCCAGTGAAGAGGCCCA  
 AGTCCCTAGGAGACGCCAGTCCCAGCGCTCCGGAGGTGGTGGGCGCGGGCAGCGGTGCCGCGTCCCT  
 CTCAGCGCCCTACCCGACGGCAGGGGGTCCGCCGGCCCGGAGGCTGCTCCTCGCGGAGCGGGCGGCC  
 CGGGCCGGGCCCTTTCTGACGCCAGCCCCCTGCACGCCGTGGCGATGCGCAGCCCGCGGCCCTGCGGCC  
 GCCCTCCACCGACTCGCCCGACGCGGGGGCGCAGGGCGGCCCTGGACGGCTACATCTCGGCGTCTCT  
 GCGCAGGCGCGCCGCGGGGGGCGGGCCAGCCCCGACCACTCCCGGGGGCGCGACGCGGCCCGCGG  
 CGCCAGAACACGCTGCGCCAGCGGCCCGCCGACGCGTCTCCGTCCCCCGCAGCGCGCAGCCCGCGGGG  
 AGCCCTCGTTGGAGCGCGTGGGGGCCACCCACAGCCCTGCCGCTTGGAGCGCGCTGGGCGTCTGTC  
 GTGGGAGTCGGAGGCGCACCCGAGCCCGTGCGCCGCCCGCCCGCCCTCACCCCGACAGCCCGGT  
 GAGGGCCGCTTGGTGAAGGCGCAGTACATCCCGGGCGCGCAGGCGGCCACCCGAGGCTCCCTGGCCGCG  
 CGCCCCGCGCAAACCGCCGCACTGACCCGCGCCGCGCAGCGTGGAGCAGTACCACCCCGGAGGCTCC  
 CGGGCCCGCCGGCCCGCTGGACGATGGCCGAGGCTTGGGCGCCCGCGGCTCGCCAGGGCCCGCAAG  
 GCCTCGCGCTCCAGTCTGAGACCAGCCTGCTGGGCCGCGCTCCGCGGTCCCTTGGGGCCCTAAGT  
 ACCCCACGGCGGAGCGGGAAGAGCCTCGGCTCCACGGCCAGCCGCGGCCAGCGCCACGCTGGCGGC  
 CCAGGCCCGAGGGTCTGCCGCTGCGGCTCCACTGCGGAGATCGACGCTGCCGATGGGCGCCGCGTG  
 CGGCCCGAGCCCTGCGGCGGTGTTCCCGGCCCGGCCGTCCTCCGTCAGTCCCAGCGTCTGCTGTC  
 TTTACGGTGCAGCGGCGAGCTCCGAGTCTCGGCTGGGCGCTGGGGCCCTGGGACCGCGGGGGCC  
 TGCGGGAGGCGTGGCGGGGTTACGGGAGAGCGAATCGAGCGCAGCGAGGAGAATCGCTGCCTTC  
 AGCTCTGCTCCAGCAGTCCAGCGGACGCGGTGGCTCGTGTGGCCGACGAGTGGTGGCGGCCACCG  
 CGGCTCTGGGGTGGAGCAGGTGACGGGGCGCCGCGAGGCCCGCCAAAGTCTTCGTGAAAATCAAAGC  
 TTCCACGCGCTCAAGAAAAGATACTGCGTTCCGTTCCGGTCTCTCAAGTCACTGACTACAGT

AG**CGGACCG**ACGCGTACGCGGCCGCTCGAG - GFP Tag - GTTTAA

**Protein Sequence:**

>RG229315 representing NM\_145056  
 Red=Cloning site Green=Tags(s)

MIRAFSFPVSPERGLRGWLEGLAGLCELHLRERQYRVQALRLAQPMGGAEAEDEEDEDAA  
 AARRAAAALQLEALPGLVWDLGQQLGDL SLESGGLEQESGRSSGFYEDPSSTGGPDSPPSTFCGDSGF  
 SGSSSYGRLGPSEPRGIYASERPKSLGDASPSAPEVVGARAAVPRSF SAPYPTAGGSAGPEACSSAERRA  
 RAGPFLTPSPLHAVAMRSPRPGRPPTDSPDAGGAGRPLDGYISALLRRRRRRGAGQPRTPSGGADGGPR  
 RQNSVRQRPDASPSGARSAPAREPSLERVGGHPTSPAALSRWASSWESEAPEPAAPPAAPSPDSPA  
 EGRLVKAQYIPGAQAATRGLPGRAARRKPPPLTRGRSVEQSPPRERPRAGRRGRMAEASGRRGSPRARK  
 ASRSQSETSLGRASAVPSGPPKYPTAEREPRPRRGPAPTLAAQAAGSCRRWRSTAEIDAADGRRV  
 RPRAPAARVPGPGSPSPAPQRLLYGCAGSDSECSAGRLGPLGRRGPAGGVGGYGESESSASEGESPAF  
 SSASSSDGSGGLVWPQQLVAATAASGGGAGAGAPAGPAKVFVKIKASHALKKKILFRSGLKVMTTV

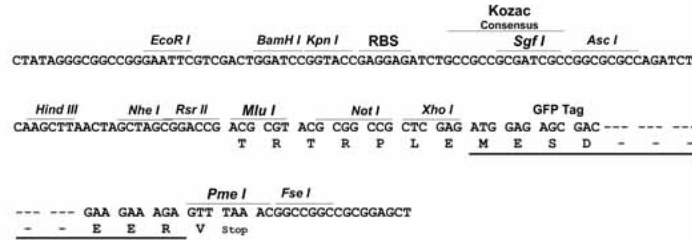
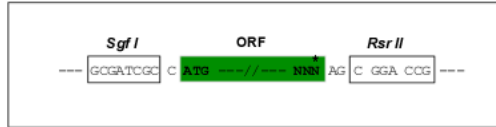
SGP**TRTRRLE** - GFP Tag - V

**Restriction Sites:**

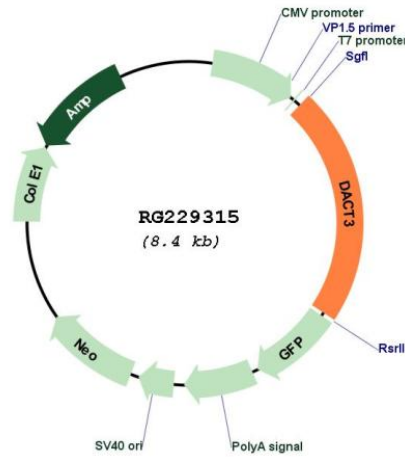
Sgfl-RsrII

Cloning Scheme:

Cloning sites used for ORF Shuttling:



Plasmid Map:



ACCN: NM\_145056  
 ORF Size: 1887 bp

<b>OTI Disclaimer:</b>	<p>Due to the inherent nature of this plasmid, standard methods to replicate additional amounts of DNA in E. coli are highly likely to result in mutations and/or rearrangements. Therefore, OriGene does not guarantee the capability to replicate this plasmid DNA. Additional amounts of DNA can be purchased from OriGene with batch-specific, full-sequence verification at a reduced cost. Please contact our customer care team at <a href="mailto:custsupport@origene.com">custsupport@origene.com</a> or by calling 301.340.3188 option 3 for pricing and delivery.</p> <p>The molecular sequence of this clone aligns with the gene accession number as a point of reference only. However, individual transcript sequences of the same gene can differ through naturally occurring variations (e.g. polymorphisms), each with its own valid existence. This clone is substantially in agreement with the reference, but a complete review of all prevailing variants is recommended prior to use. <a href="#">More info</a></p>
<b>OTI Annotation:</b>	This clone was engineered to express the complete ORF with an expression tag. Expression varies depending on the nature of the gene.
<b>Components:</b>	The ORF clone is ion-exchange column purified and shipped in a 2D barcoded Matrix tube containing 10ug of transfection-ready, dried plasmid DNA (reconstitute with 100 ul of water).
<b>Reconstitution Method:</b>	<ol style="list-style-type: none"> <li>1. Centrifuge at 5,000xg for 5min.</li> <li>2. Carefully open the tube and add 100ul of sterile water to dissolve the DNA.</li> <li>3. Close the tube and incubate for 10 minutes at room temperature.</li> <li>4. Briefly vortex the tube and then do a quick spin (less than 5000xg) to concentrate the liquid at the bottom.</li> <li>5. Store the suspended plasmid at -20°C. The DNA is stable for at least one year from date of shipping when stored at -20°C.</li> </ol>
<b>RefSeq:</b>	<a href="#">NM_145056.3</a>
<b>RefSeq Size:</b>	2834 bp
<b>RefSeq ORF:</b>	1890 bp
<b>Locus ID:</b>	147906
<b>UniProt ID:</b>	<a href="#">Q96B18</a>
<b>Cytogenetics:</b>	19q13.32
<b>Gene Summary:</b>	<p>May be involved in regulation of intracellular signaling pathways during development. Specifically thought to play a role in canonical and/or non-canonical Wnt signaling pathways through interaction with DSH (Dishevelled) family proteins.[UniProtKB/Swiss-Prot Function]</p>