

## Product datasheet for **RG229288**

### **MIER1 (NM\_001077700) Human Tagged ORF Clone**

#### **Product data:**

Product Type:	Expression Plasmids
Product Name:	MIER1 (NM_001077700) Human Tagged ORF Clone
Tag:	TurboGFP
Symbol:	MIER1
Synonyms:	ER1; MI-ER1
Mammalian Cell Selection:	Neomycin
Vector:	pCMV6-AC-GFP (PS100010)
E. coli Selection:	Ampicillin (100 ug/mL)



[View online »](#)

**ORF Nucleotide Sequence:**

>RG229288 representing NM\_001077700  
 Red=Cloning site Blue=ORF Green=Tags(s)

TTTTGTAATACGACTCACTATAGGGCGGCCGGAATTCGTCGACTGGATCCGGTACCGAGGAGATCTGCC  
 GCC**CGCATCGCC**

ATGGATGGGGCTTCTTCAGGCGGTGGCGGCAGCAGCGAAGGTGGCGGCGGCAGCAGCGGCAGCGGCTATG  
 GTGTGGTCGCTCGATTCTCCAGTGCCTGGCTGAGTTTCGGACGTGGTTAAGAACCAACTGGTTGAGGTT  
 CAATGCAGACAAGACGGATGTGATGCTGCCATCTGTTGAATCTTCAAGTCCAGGAGGTTACGCAACATCA  
 GATGACCATGAATTTGATCCATCAGCTGACATGCTGGTTCATGATTTTGTATGATGAACGAACATTAGAAG  
 AGGAAGAAATGATGGAAGGAGAAACAACTTCAGCTCTGAAATAGAAGATCTTGAAGGGAAGGCGACAT  
 GCCAATTCATGAACCTTCTCAGCCTTTATGGTTATGGTAGTACTGTTGACTACCTGAAGAAGATGAGGAA  
 GAGGAAGAAGAGGAAGAAGAAGGTGAAGATGATGAAGTGCTGATAATGATGACAACAGTGGCTGTAGTG  
 GGGAAAAATAAGAGGAGAATAAAGGATTCATCAGGTCAGGAGGATGAAACTCAGTCTTCCAATGATGA  
 TCCATCACAATCTGTTGCTTCTCAAGATGCCAGGAAATAATCCGCCACGTCGATGTAATATTTTGTAT  
 ACAAATAGTGAAGTAGAAGAAGAATCTGAAGAAGATGAAGATTATATTCCATCAGAAGACTGGAAAAAGG  
 AGATTATGGTGGGCTCCATGTTTCAAGCAGAAATTCAGTTGGCATTGTAGATACAAAAGAAAATGAAAA  
 AGTATATGAAAATGATGATCAGCTCCTGTGGGACCCTGAGTACTTACCAGAAGATAAAGTGATTATATTT  
 CTTAAAGATGCATCTAGAAGAACAGGTGATGAGAAGGGTGTAGAAGCAATTCCTGAAGGATCTCACATAA  
 AAGACAATGAACAGGCTTTATATGAATTGGTTAAATGCAATTTTGTATACAGAAGAAGCATTGAGAAGATT  
 AAGATTTAATGTAAAAGCAGCTAGAGAGGAATTCCTGTTGGACAGAGGAAGAGTGTAGAAATTTTGAA  
 CAAGGGCTGAAGGCTATGGAAGGATTTTCATTTGATTACAGGCTAATAAAGTCCGAACAAGGTCAGTTG  
 GTGAATGTGTAGCATTCTATTACATGTGGAATAAATCTGAACGTTATGATTTCTTTGCTCAGCAAACAG  
 ATTTGGAAGAAGAATAATAATCTTCATCCTGGTGTACCGGATTACATGGATCGTCTTCTAGACGAAAGT  
 GAAAGTGTGCATCTAGTCGAGCACCATCCCCTCCCCAACTGCATCAAACAGTAGTAACAGCCAGTCTG  
 AGAAAAGAGATGGCACTGTAAGCACTGCTAATCAAATGGAGTGTCTAATGGACCAGGTGAAATATT  
 AAACAAAGAGGAAGTAAAAGTTGAAGGGTTACACATTAATGGACCAACAGGTGGAATAAGAAACCCTT  
 CATGCAGATATGGATACTAATGGTTATGAAACAGATAACCTTACCACTGACCCAAAACCTTGCCCATATGA  
 CTGCAAGAAATGAAAATGATTTTGTAGAAAAAGTGAGAGACCTGCCAAAAGGCGAAGGGTAAACAGCAA  
 TGGAAAAGAAAGTCCAGGTTCTTCTGAATTTTCCAAGAAGCAGTCTCACATGGGAAATTTGAAGAATT  
 GAAAACACAGATGAC

**ACGCGT**ACGCGGCCGCTCGAG – GFP Tag – GTTTAA

**Protein Sequence:**

>RG229288 representing NM\_001077700  
 Red=Cloning site Green=Tags(s)

MDGASSGGGSSEGGGSSGSGYGVVRFVSRQLAEFRWLRTNWLRFNADKTDVMLPSVSESSPGGSATS  
 DDHEFDPSADMLVHDFDDERTLEEEEMMEGETNFSSEIEDLAREGDMPIHELLSLYGYGSTVRLPEEDEE  
 EEEEEEGEDDEDADNDDNSGCSGENKEENIKDSSGQEDETQSSNDPSQSVASQDAQEIIIRPRRCKYFD  
 TNSEVEEESEDEDYIPSEDWKEIMVGSFMQAEIPVGIcrykENEKVYENDDQLLWDPEYLPEDKVIIF  
 LKDasRRRTGDEKGVeAIPEGSHIKDNEQALYELVKCNFDTEALRRLRFNVKAAREELSVWTEEECRNFE  
 QGLKAYGKDFHLIQANKVRTRSVGECVAFYYMwKKSERYDFFAQQTRFGKKKYNLHPGVTDYMDRLLDES  
 ESAASSRAPSPPTASNSNSQSEKEDGTVSTANQNGVSSNGPGEILNKEEVKVEGLHINGPTGGNKKPL  
 HADMDTNGYETDNLTTDPKLAHMTARNENDFDEKSERPAKRRRVNSNGKESPGSSEFFQEAVSHGKFEEL  
 ENTDD

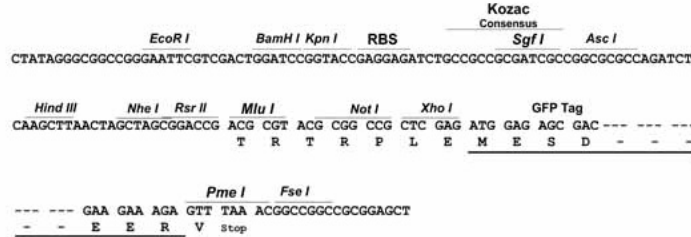
**TRTRPLE** – GFP Tag – V

**Restriction Sites:**

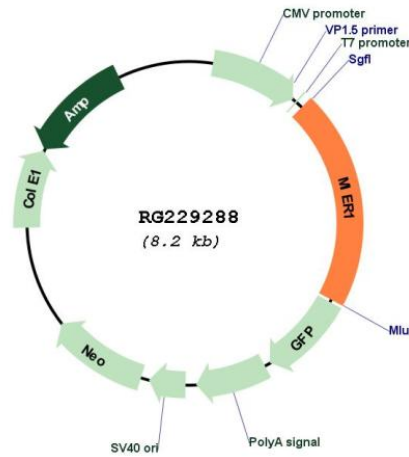
Sgfl-MluI

Cloning Scheme:

Cloning sites used for ORF Shutting:



Plasmid Map:



ACCN: NM\_001077700  
 ORF Size: 1695 bp

<b>OTI Disclaimer:</b>	The molecular sequence of this clone aligns with the gene accession number as a point of reference only. However, individual transcript sequences of the same gene can differ through naturally occurring variations (e.g. polymorphisms), each with its own valid existence. This clone is substantially in agreement with the reference, but a complete review of all prevailing variants is recommended prior to use. <a href="#">More info</a>
<b>OTI Annotation:</b>	This clone was engineered to express the complete ORF with an expression tag. Expression varies depending on the nature of the gene.
<b>Components:</b>	The ORF clone is ion-exchange column purified and shipped in a 2D barcoded Matrix tube containing 10ug of transfection-ready, dried plasmid DNA (reconstitute with 100 ul of water).
<b>Reconstitution Method:</b>	<ol style="list-style-type: none"><li>1. Centrifuge at 5,000xg for 5min.</li><li>2. Carefully open the tube and add 100ul of sterile water to dissolve the DNA.</li><li>3. Close the tube and incubate for 10 minutes at room temperature.</li><li>4. Briefly vortex the tube and then do a quick spin (less than 5000xg) to concentrate the liquid at the bottom.</li><li>5. Store the suspended plasmid at -20°C. The DNA is stable for at least one year from date of shipping when stored at -20°C.</li></ol>
<b>RefSeq:</b>	<a href="#">NM_001077700.3</a>
<b>RefSeq Size:</b>	5569 bp
<b>RefSeq ORF:</b>	1698 bp
<b>Locus ID:</b>	57708
<b>UniProt ID:</b>	<a href="#">Q8N108</a>
<b>Cytogenetics:</b>	1p31.3
<b>Gene Summary:</b>	This gene encodes a protein that was first identified in <i>Xenopus laevis</i> by its role in a mesoderm induction early response (MIER). The encoded protein functions as a transcriptional regulator. Alternatively spliced transcript variants encode multiple isoforms, some of which lack a C-terminal nuclear localization signal. [provided by RefSeq, May 2013]