

## Product datasheet for **RG229260**

### **UAP1L1 (NM\_207309) Human Tagged ORF Clone**

#### **Product data:**

Product Type:	Expression Plasmids
Product Name:	UAP1L1 (NM_207309) Human Tagged ORF Clone
Tag:	TurboGFP
Symbol:	UAP1L1
Mammalian Cell Selection:	Neomycin
Vector:	pCMV6-AC-GFP (PS100010)
E. coli Selection:	Ampicillin (100 ug/mL)



[View online »](#)

**ORF Nucleotide Sequence:**

>RG229260 representing NM\_207309  
 Red=Cloning site Blue=ORF Green=Tags(s)

TTTTGTAATACGACTCACTATAGGGCGGCCGGGAATTCGTCGACTGGATCCGGTACCGAGGAGATCTGCC  
 GCC**CGGATCGCC**

ATGGCTTCGGAGCAGGACGTGCGCGCCCGCTGCAGCGCTGGCCAGGAGCACCTCTGCGCTTCTGGG  
 CCGAGCTGGCGCCGGAGCCACGAGCCGCGCTGCTGGCGGAGCTGGCGCTGCTGGAGCCCGAGGCGCTGCG  
 CGAGCACTGCCGGCGGGCGGAGGCCTGCGCGCGCCCCACGCCCCGCGCCGACTTGGCCGCGCGC  
 CTGCGGCCCTGCCCCAGAGCGCGTGGGAGGGCCAGCCGACGCGACCCCGAGACACGGCGCGCTGGG  
 AGGAGGAAGTTTCCGTGAGATTCTCTGAACAAGGTGGCCGCTCTGCTGCTGGTGGGGGCGAGGGCAC  
 TCGCTGGGCGTGACCTACCCCAAGGGTATGTACCGTGTGGGGCTGCCAGCCGGAAGACCCTGTACCAG  
 CTGCAGGCGGAGCGGATTCCGCGGGTGGAGCAGCTGGCCGGTGGAGCGCCACGGGACCCGCTGCACCGTCC  
 CCTGGTACGTGATGACCGAGGTTCACTCTGGGGCCACGGCCGAGTTCTTCAAGGAGCACAACCTCTT  
 CCACCTGGACCCGCCAACGTGGTCACTGTTTGGAGCAGCGCTGCTGCCTGCTGTGACCTTTGATGGCAAG  
 GTTATCCTGGAGCGGAAAAGACAAAGTTGCCATGGCCCCAGACGGCAACGGGGGCCTACTGCGCGCTGG  
 AGGACCACAAGATCCTGGAGGACATGGAGCGCCGGGAGTGGAGTTTGTGCACGTGACTGTGTGGACAA  
 CATCCTGGTGGGCTGGCGGACCCTGTCTTATCGGCTTCTGTGTGTTGCAGGGCGCAGACTGTGGCGCC  
 AAGGTGGTGGAAAAGGCATACCCCGAGGAGCCCGTGGGCGTGGTGTGCCAGTGGACGGTGTCCCCAGG  
 TGGTGGAGTACAGCGAGATCAGTCTGAGACCGCACAGCTACGTGCCTCCGACGGGAGCCTGTGTACAA  
 TGCAGGCAACATCTGCAACCACTTCTTACCCGAGGCTTCCCTAAGGCGGTACCAGGGAGTTTGGAGCCT  
 TTGCTGAAGCCACACGTGGTGTGAAGAAGTCCCGTATGTGGATGAGGAGGGGAATCTGGTAAAGCCGC  
 TAAACCGAACGGGATAAAGATGGAGAAGTTTGTGTTGATGTGTCCGGTTTGCCTAAGAACTTTGCTGC  
 CTTGGAAGTGTGCGGGAGGAGGAATTTCCCACTGAAGAACGAGAGCCAGCCGACAGGAGCAGTCCC  
 CGACCCGCTCGCAGGCCCTGCTCACCCAGCACTACCGGTGGGCTCTGCGGGCCGGGGCCGCTTCTGG  
 ATGCCATGGGGCTGGCTCCCAGAGCTGCCAGCTTGCCCCAAATGGAGACCCCTCCGGCCATCTGTGA  
 GATATCGCCCTTGGTGTCTTACTCTGGAGAGGTTTAGAAGTGTACCTGCAAGGCCGGGAGTTCCAGTCC  
 CCGCTCATCTGGATGAAGACCAGGCCAGGAGCCGAGCTGCAGGAGTCC

**ACGCGTACGCGGCCGCTCGAG** - GFP Tag - GTTTAA

**Protein Sequence:**

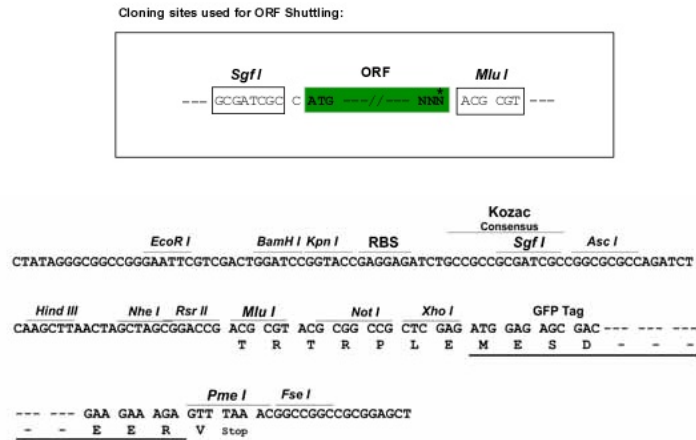
>RG229260 representing NM\_207309  
 Red=Cloning site Green=Tags(s)

MASEQDVRARLQRAGQEHLRFWAELAPEPRAALLAELALLEPEALREHCRRAEACARPHGPPDLAAR  
 LRPLPPERVGRASRSDPETRRRWEEEGFRQISLNKVAVLLLAGGQGTRLGVTYPKGMRYVGLPSRKTLYQ  
 LQAERIRRVEQLAGERHGTRCTVPWYVMTSEFTLGPTAEFFREHNFHLDPANVVMFEQRLLPAVTFDGK  
 VILERKDKVAMAPDGNGLYCALEDHKILEDMERRGVEFVHVYCVDNILVRLADPVFIGFCVLQGADCGA  
 KVVEKAYPEEPVGVVQVDGVPQVVEYSEISPETAQLRASDGSLLYNAGNICNHFFTRGFLKAVTREFEP  
 LLKPHAVKVPYVDEEENLVKPLKPNIGKMEKVFVDFVRFKNAFAALEVLRREEEF SPLKNAEPADRSDP  
 RTARQALLTQHYRWALRAGARFLDAHAWLPELPSLPPNGDPPAICEISPLVSYSGEGLEVYLQGREFQS  
 PLILDEDQAREPQLQES

**TRTRPLE** - GFP Tag - V

**Restriction Sites:**

Sgfl-MluI

**Cloning Scheme:**


**ACCN:** NM\_207309

**ORF Size:** 1521 bp

**OTI Disclaimer:** The molecular sequence of this clone aligns with the gene accession number as a point of reference only. However, individual transcript sequences of the same gene can differ through naturally occurring variations (e.g. polymorphisms), each with its own valid existence. This clone is substantially in agreement with the reference, but a complete review of all prevailing variants is recommended prior to use. [More info](#)

**OTI Annotation:** This clone was engineered to express the complete ORF with an expression tag. Expression varies depending on the nature of the gene.

**Components:** The ORF clone is ion-exchange column purified and shipped in a 2D barcoded Matrix tube containing 10ug of transfection-ready, dried plasmid DNA (reconstitute with 100 ul of water).

**Reconstitution Method:**

1. Centrifuge at 5,000xg for 5min.
2. Carefully open the tube and add 100ul of sterile water to dissolve the DNA.
3. Close the tube and incubate for 10 minutes at room temperature.
4. Briefly vortex the tube and then do a quick spin (less than 5000xg) to concentrate the liquid at the bottom.
5. Store the suspended plasmid at -20°C. The DNA is stable for at least one year from date of shipping when stored at -20°C.

**RefSeq:** [NM\\_207309.3](#)

**RefSeq Size:** 3401 bp

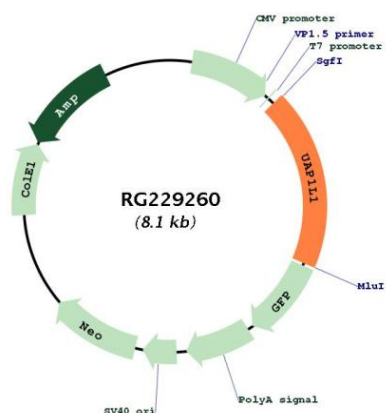
**RefSeq ORF:** 1524 bp

**Locus ID:** 91373

**UniProt ID:** [Q3KQV9](#)

**Cytogenetics:** 9q34.3

Product images:



Circular map for RG229260