

Product datasheet for **RG229214**

DENND1B (NM_144977) Human Tagged ORF Clone

Product data:

Product Type:	Expression Plasmids
Product Name:	DENND1B (NM_144977) Human Tagged ORF Clone
Tag:	TurboGFP
Symbol:	DENND1B
Synonyms:	C1ORF18; C1orf218; FAM31B
Mammalian Cell Selection:	Neomycin
Vector:	pCMV6-AC-GFP (PS100010)
E. coli Selection:	Ampicillin (100 ug/mL)
ORF Nucleotide Sequence:	>RG229214 representing NM_144977 Red=Cloning site Blue=ORF Green=Tags(s)

TTTTGTAATACGACTCACTATAGGGCGGCCGGAATTCGTCGACTGGATCCGGTACCGAGGAGATCTGCC
GCC**CGATCGCC**

ATGGACTGCAGGACCAAGGCAAAATCCAGACAGAACCTTTGACTTGGTGTGAAAGTGAAATGTCATGCCT
CTGAAAATGAAGATCCTGTGGTATTGTGGAAATCCCAGAGGACTTTGGAGACCAGGAAATACTACAGAG
TGTGCCAAAGTTCTGTTTTCCCTTTGACGTTGAAAGGGTGTCTCAGAATCAAGTTGGACAGCACTTTACC
TTTGTACTGACAGACATTGAAAGTAAACAGAGATTTGGATTCTGCAGACTGACGTCAGGAGGCACAATTT
GTTTATGCATCCTTAGTTACCTCCCTGGTTTGAAGTGTATTACAAGCTTCTAAATACTCTTGCAGATTA
CTTGGCTAAGGAACTGGAAAATGATTTGAATGAACTCTCAGATCACTGTATAACCACCCAGTACCAAAG
GCAAACTCCTGTAAATTTGAGTGTGAACCAAGAGATATTTATTGCCTGTGAGCAAGTTCTGAAAGATC
AGCCTGCCTAGTACCGCATTCTACTTCACTTGCCTGATGTAAGTGGACTCCCAACAATACCCGAGAG
TAGAAATCTTACAGAATATTTTGTGGCGTGGATGTGAACAACATGCTGCAGCTGTATGCCAGTATGCTG
CATGAAAGGCGCATCGTGATTATCTCGAGCAAATTAAGCACTTTAACTGCCTGTATCCATGGATCAGCTG
CTCTTCTATACCAATGTATTGGCAACACATATACATCCCAGTGCCTTCTCCACACCTGCTGGACTACTG
CTGTGCCCAATGCCATACCTGATTGGAATACACTCCAGCCTCATAGAGAGAGTGAAAAACAAATCATTG
GAAGTGTGTTTATGTTAAATGTTGATACAAACACATTAGAATCACCATTTAGTGACTTGAACAACCTAC
CAAGTGTGTTGCTCGGCCTTGAAAAATAAACTGAAGAAGCAGTCTACAGCTACGGGTGATGGAGTAGC
TAGGGCCTTTCTAGAGCACAGGCTGCTTTGTTGGATCTACAGAGATGCACTGAGATACAAAACCTGGT
GAGCCCATCACTTTCTGTGAGGAGATTTTGTAAAGCACCCTCAAGCGTGATGAAACAGTTCTGGAAA
CTGCCATTAACCTCCAGCTTTTTAAGCAGTTTATCGATGGTGCAGTGGCAAACTAAATGCAGGAAGGGG
TTTCTCTGATGATTTGAAGAAGAGATCACTTCAGGTGGCTTTTGTGGAGGTAAGACAAGTTACAATAT
GATTATCCATTTCTCAA

ACGCGTACGCGGCCGCTCGAG - GFP Tag - GTTTAA



[View online >](#)

Protein Sequence: >RG229214 representing NM_144977
Red=Cloning site Green=Tags(s)

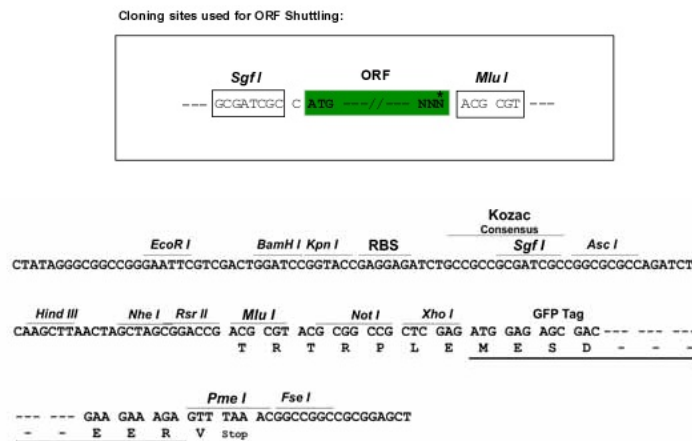
MDCRTKANPDRTFDLVLKVKCHASENEDPVVLWKFPEDFGDQEILQSVPKFCFPFDVERVSQNQVGGQHFT
 FVLTDIESKQRFQFCRLTSGGTICLCILSYLPWFVEVYKLLNLTADYLAKELENDLNETLRSLYNHPVVK
 ANTPVNL SVNQEIFIACEQVLKDQPALVPHSYFIAPDVTGLPTIPESRNLTEYFVAVDVNNMLQLYASML
 HERRIVIISSKSLTLTACIHGSAALLYPMYWQHIYIPVLPPLLDYCCAPMPYLIGIHSSLIERVKNKSL
 EDVVMLNVDNTLLESPFSDLNMLPSDVVSALKNNLKKQSTATGDGVARAFLRAQAALFGSYRDALRYKPG
 EPITFCEESFVKHRSSVMKQFLETAINLQLFKQFIDGRLAKLNAGRGFSDVFEEETSGGFCGGKDKLQY
 DYPFSQ

TRTRPLE - GFP Tag - V

Chromatograms: https://cdn.origene.com/chromatograms/ja2034_b08.zip

Restriction Sites: SgfI-MluI

Cloning Scheme:



ACCN: NM_144977

ORF Size: 1278 bp

OTI Disclaimer: The molecular sequence of this clone aligns with the gene accession number as a point of reference only. However, individual transcript sequences of the same gene can differ through naturally occurring variations (e.g. polymorphisms), each with its own valid existence. This clone is substantially in agreement with the reference, but a complete review of all prevailing variants is recommended prior to use. [More info](#)

OTI Annotation: This clone was engineered to express the complete ORF with an expression tag. Expression varies depending on the nature of the gene.

Components: The ORF clone is ion-exchange column purified and shipped in a 2D barcoded Matrix tube containing 10ug of transfection-ready, dried plasmid DNA (reconstitute with 100 ul of water).

Reconstitution Method:

1. Centrifuge at 5,000xg for 5min.
2. Carefully open the tube and add 100ul of sterile water to dissolve the DNA.
3. Close the tube and incubate for 10 minutes at room temperature.
4. Briefly vortex the tube and then do a quick spin (less than 5000xg) to concentrate the liquid at the bottom.
5. Store the suspended plasmid at -20°C. The DNA is stable for at least one year from date of shipping when stored at -20°C.

RefSeq: [NM_144977.5](#)

RefSeq Size: 2380 bp

RefSeq ORF: 1281 bp

Locus ID: 163486

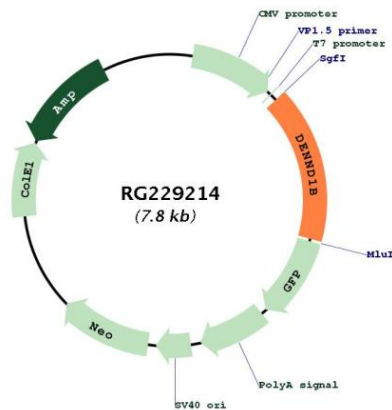
UniProt ID: [Q6P3S1](#)

Cytogenetics: 1q31.3

Protein Families: Transmembrane

Gene Summary: Clathrin (see MIM 118955)-mediated endocytosis is a major mechanism for internalization of proteins and lipids. Members of the connecdenn family, such as DENND1B, function as guanine nucleotide exchange factors (GEFs) for the early endosomal small GTPase RAB35 (MIM 604199) and bind to clathrin and clathrin adaptor protein-2 (AP2; see MIM 601024). Thus, connecdenns link RAB35 activation with the clathrin machinery (Marat and McPherson, 2010 [PubMed 20154091]).[supplied by OMIM, Nov 2010]

Product images:



Circular map for RG229214