

Product datasheet for **RG229136**

Aly (ALYREF) (NM_005782) Human Tagged ORF Clone

Product data:

Product Type:	Expression Plasmids
Product Name:	Aly (ALYREF) (NM_005782) Human Tagged ORF Clone
Tag:	TurboGFP
Symbol:	Aly
Synonyms:	ALY; ALY/REF; BEF; REF; THOC4
Mammalian Cell Selection:	Neomycin
Vector:	pCMV6-AC-GFP (PS100010)
E. coli Selection:	Ampicillin (100 ug/mL)
ORF Nucleotide Sequence:	>RG229136 representing NM_005782 Red=Cloning site Blue=ORF Green=Tags(s)

TTTTGTAATACGACTCACTATAGGGCGGCCGGAATTCGTCGACTGGATCCGGTACCGAGGAGATCTGCC
GCC**CGATCGC**C

ATGCCGATTCGCGCCCGCCATGGCCGACAAAATGGACATGTCTCTGGACGACATCATTAACTGAACC
GGAGCCAGCGAGGCGGCCGGGGCGGGGCGGGCCGCGCCGGGCGGCTCCAGGGCGGCCGCGCGG
TGGGGCGCAGGCCCGCGCGAGTGAATCGAGGCGGGGCCATCCGGAACCGGCCGACATCGCCCGC
GGCGCGGCCGGCGAGGCGGCAGGAACCGACCGCGCCCTACAGCAGGCCAAAACAACCTCCGACAAGT
GGCAGCACGATCTTTTCGACAGTGGCTTCGGCGGTGGTCCGGCGTGGAGACAGGTGGGAACTGCTGGT
GTCCAATCTGGATTTTGGAGTCTCAGACGCCGATATTCAGGAACCTTTGCTGAATTTGGAACGCTGAAG
AAGGCGGCTGTGCACTATGATCGCTCTGGTCCGAGCTTAGGAACAGCAGACGTGCACTTTGAGCGGAAGG
CAGATGCCCTGAAGGCCATGAAGCAGTACAACGGCGTCCCTCTGGATGGCCGCCCATGAACATTAGCT
TGTACAGTACAGATTGACGCACAGCGGAGGCCTGCACAGAGCGTAAACAGAGGTGGCATGACTAGAAAAC
CGTGGCGCTGGAGTTTTGGTGGTGGTGGAGGCACCCGGAGAGGCACCCGCGGAGGCGCCCGTGGAAAGAG
GCAGAGGTGCCGCGAGGAATCAAAGCAGCAGCTTTCCGCGAGGAGCTGGATGCCAGCTGGACGCCTA
TAATGCGAGAATGGACACCACT

ACGCGTACGCGGCCGCTCGAG - GFP Tag - GTTTAA



[View online »](#)

Protein Sequence: >RG229136 representing NM_005782
 Red=Cloning site Green=Tags(s)

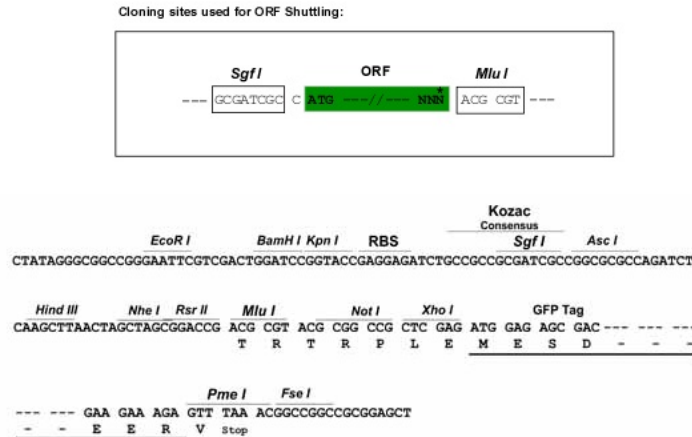
MPDSAPAMADKMDMSLDDIIKLNRSQRGGRRGRGRGRAGSQQGRRGGGAQAAARVNRGGPIRNRPAIAR
 GAAGGGGRNRPA PYSRPKQLPDKWQHDLFDSGFGGGAGVETGGKLLVSNLDFGVSADAIQELFAEFGTLK
 KAAVHYDRSGRSLGTADVHFERKADALKAMKQYNGVPLDGRPMNIQLVTSQIDAQRPPAQSVNRGGMTRN
 RGAGGFGGGGTRRGTRGGARGRGRGAGRNSKQQLSAEELDAQLDAYNARMDS

TRTRPLE - GFP Tag - V

Chromatograms: https://cdn.origene.com/chromatograms/ja3209_a03.zip

Restriction Sites: SgfI-MluI

Cloning Scheme:



ACCN: NM_005782

ORF Size: 792 bp

OTI Disclaimer: The molecular sequence of this clone aligns with the gene accession number as a point of reference only. However, individual transcript sequences of the same gene can differ through naturally occurring variations (e.g. polymorphisms), each with its own valid existence. This clone is substantially in agreement with the reference, but a complete review of all prevailing variants is recommended prior to use. [More info](#)

OTI Annotation: This clone was engineered to express the complete ORF with an expression tag. Expression varies depending on the nature of the gene.

Components: The ORF clone is ion-exchange column purified and shipped in a 2D barcoded Matrix tube containing 10ug of transfection-ready, dried plasmid DNA (reconstitute with 100 ul of water).

Reconstitution Method:

1. Centrifuge at 5,000xg for 5min.
2. Carefully open the tube and add 100ul of sterile water to dissolve the DNA.
3. Close the tube and incubate for 10 minutes at room temperature.
4. Briefly vortex the tube and then do a quick spin (less than 5000xg) to concentrate the liquid at the bottom.
5. Store the suspended plasmid at -20°C. The DNA is stable for at least one year from date of shipping when stored at -20°C.

Note: Plasmids are not sterile. For experiments where strict sterility is required, filtration with 0.22um filter is required.

RefSeq: [NM_005782.4](#)

RefSeq Size: 1113 bp

RefSeq ORF: 795 bp

Locus ID: 10189

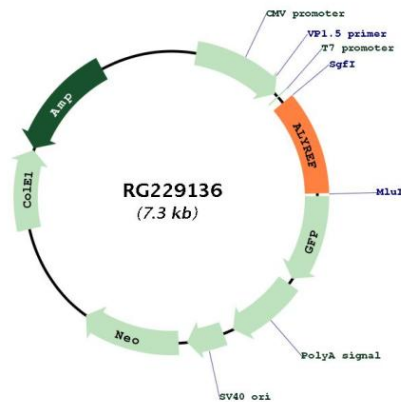
UniProt ID: [Q86V81](#)

Cytogenetics: 17q25.3

Protein Pathways: Spliceosome

Gene Summary: The protein encoded by this gene is a heat stable, nuclear protein and functions as a molecular chaperone. It is thought to regulate dimerization, DNA binding, and transcriptional activity of basic region-leucine zipper (bZIP) proteins. [provided by RefSeq, Jul 2008]

Product images:



Circular map for RG229136