

Product datasheet for **RG229062**

Neurabin 1 (PPP1R9A) (NM_001166163) Human Tagged ORF Clone

Product data:

Product Type:	Expression Plasmids
Product Name:	Neurabin 1 (PPP1R9A) (NM_001166163) Human Tagged ORF Clone
Tag:	TurboGFP
Symbol:	PPP1R9A
Synonyms:	Neurabin-I; NRB1; NRBI
Mammalian Cell Selection:	Neomycin
Vector:	pCMV6-AC-GFP (PS100010)
E. coli Selection:	Ampicillin (100 ug/mL)
ORF Nucleotide Sequence:	>RG229062 representing NM_001166163 Red=Cloning site Blue=ORF Green=Tags(s)

TTTTGTAATACGACTCACTATAGGGCGGCCGGAATTCGTCGACTGGATCCGGTACCGAGGAGATCTGCC
GCC**CGATCGCC**

ATGTTGAAAACACTGAGTCTTCAGGTGAACGAACCACTCTCAGAAGTGCCTCTCCTCACAGGAATGCATATC
GAACTGAGTTTCAGGCACTGAAAAGTACCTTTGACAAACCAAGTCAGATGGGGAACAAAAACAAAAGA
AGGTGAGGGCTCCAGCAGAGCAGGGGGAGGAAATATGGTCCAATGTCAACAGAATTAACCTATTT
ATGCAGATGGGTATGGAACCAACGAGAATGCTGCAGTCATTGCCAAAACAAGGGGAAAGTGGACATT
CATCTCCTCAGAGAAGAATGAAGCCAAAGAATTTCTGGAAAAACAGATGGCTCAGTTGTTAAGTTGGA
GTCTTCTGTTTCTGAACGAATTAGTAGATTTGACACTATGTACGATGGCCCTTCATATCCAAAGTTCACT
GAGACTCGAAAGATGTTTGAGAGAAGTGTGCATGAATCAGGACAGAAACAACCGCTATCCCAAAGAAAG
AGAAAGCTGGAGGGAGTGAACCTCAGGATGAATGGGGAGGTTCCAAGTCCAACAGAGGCAGTACTGATTC
CTTGGACAGCCTTAGCTCCCGAAGTGGGCTGTCTCCCAACTGTGAGTCAACTGAGTGCAGTATTTGAG
AACACTGATTCTCCAGTGCCATCATTTCTGAGAAGGCTGAAAACAATGAATACTCAGTGACTGGGCATT
ATCCCTTGAATTTACCATCTGTTACTGTTACAAATCTTGACACATTTGGTCACTGAAGGATTCTAATTC
CTGGCCCTCTCAAACAAGCGAGGTGTTGATACAGAGGATGCTCACAAGAGTAATGCAACTCCAGTACCA
GAAGTGGCTTCTAAAAGTACCTCTAGCTTCGATACCTGGTGAAGAGATCCAGCAGAGCAAGGAACCCG
AGGACTCCACATCTAATCAACAGACTCCCGACAGCATTGACAAAGATGGTCTGAAGAACCTTGTGCTGA
AAGTAAGGCAATGCCAAAGTCCGAAATCCCTTACCACAAGGCAACTGTTAGAAGATGCTGAAGCTAAT
TTGGTTGAAGGGAGGCAGCAAAGCAACAGAGGAAAGAACTTGCAGGTGGTGATTTACCTCTCCTGATG
CTTCTGCATCCAGTTGTGGAAAAGTACCTGAAGATTCAAATAATTTTGTGTTCCCATGTGTACAT
GCACAGTGACTATAATGTGTATAGGGTGAAGTCCAGGTATAATTCAGACTGGGGAGAGACAGGCACTGAG
CAGGATGAGGAGGAAGATAGTGATGAGAACAGTACTATCAGCCTGATATGGAGTACTCGGAAATTTGTTG
GATTGCCAGAAGAAGAAGAAATCCAGCAAATAGGAAAATTAAGTTTGTAGTGTCTCTATTAAGGTTTT
CAACACATACTCCAATGAAGACTATGACAGGAGAAATGACGAAGTTGACCCTGTGGCTGCTCAGCTGAG



[View online »](#)

TATGAACTTGAAAAACGTGTAGAAAAGCTGGAACTTTTCCAGTGGAGCTAGAGAAAAGATGAGGATGGTC
 TTGGTATAAGTATTATTGGAATGGGTGTTGGAGCAGATGCTGGACTTGAAAAGCTGGGAATATTCGTC
 GACAGTAACAGAAAGTGGTGTCTCAACGGGATGGCAGAATACAAGTCAATGACCAGATTGTGGAAGTG
 GATGGAATCAGCTTGGTGGGTGTGACACAGAATTTTGCAGCAACAGTTCTCAGAAACACCAAGGGCAACG
 TCAGATTTGTTATTGGGCGGGAAAAACAGGACAAGTGAAGCGAGGTTGCCAGTTGATAAGCCAGACACT
 GGAACAGGAGAGGCGCCAGAGAGAGCTGCTGGAACAGCACTATGCCAGTATGATGCCAGCATGACGAG
 ACAGGAGAATATGCCACAGATGAAGAAGAAGATGAGGTAGGACCTGTCTTCTGGCAGCAGCATGGCCA
 TTGAAGTCTTTGAGCTGCCTGAGAATGAGGACATGTTTTCCCATCAGAAGTGGACACAAGCAAGCTCAG
 TCACAAGTTCAAAGAGTTGCAAATCAAACATGCAGTTACAGAAGCAGAGATTCAAAAAATTGAAGACCAAG
 CTGCAGGCAGCAGAAAATGAGAAAGTGAAGTGGGAACTAGAAAAAACCAACTCCAACAAAAATAGAAG
 AGAATAAGGAAAGAAATGTTGAAGTTGAAAGCTACTGGATTGAGGCCAAACATTATGCCACACAGTGAA
 TGAGCATCTCAAAGAGACTCAAAGCCAGTATCAGGCCTTGAAAAAGAAATACAACAAGGCAAGAAAGTTG
 ATCAAGGATTTTCAACAAAAAGAGCTTGATTTTCATCAAAAGACAGGAAGCAGAAAGAAAGAAATAGAAG
 ATTTGAAAAAGCTCATCTTGTGGAAGTCAAGGCCTCCAAGTGGGATTAGAGATTTGGAAGCTGAGGT
 ATTCAGGCTACTGAAGCAAAATGGGACTCAAGTTAACAATAATAACAACATCTTTGAGAGAAAGAACATCT
 CTTGGTGAAGTCTCTAAAGGGGATACCATGGAGAAGTGGATGGCAAGCAGACATCTTGCCAAGATGGCC
 TAAGTCAAGACTTGAATGAAGCAGTCCCAGAGACAGAGCGCTGGATTCAAAAGCACTGAAAACCTGAGC
 CCAGCTCTCTGTGAAGAACAGACGCCAGAGACCCTTAGGACAAGACTGTATGATAGTGTGATTCCACA
 GATGGGGAGGACAGTCTAGAGAGAAAGAATTTTACCTTCAATGATGACTTCAGTCCCAGCAGTACCAGTT
 CAGCAGACCTCAGCGGCTTAGGAGCAGAACCTAAAACACCAGGGCTCTCTCAGTCCCTAGCACTGTCATC
 AGATGAGATCCTTGATGATGGACAGTCTCCAAACACAGTCAGTGTGAGAATCGGGCCGTTGAGGAATGG
 AGTGTGCAGCAGGTTTCTCACTGGTTAATGAGCCTAACTGGAGCAGTATGTATCTGAATTCAGTGCCC
 AAAACATCACTGGAGAACAGCTCCTGAGTTGGATGGAATAAACTTAAGGCTCTTGAATGACAGCATC
 CCAGGACCGAGCAGTGGTCAAAAAGAACTCAAGGAAATGAAGTGTCTCTAGAGAAGGCTCGGAAGGCC
 CAAGAGAAAATGAAAAACAAAGAGAAAAGCTAAGGAGAAAGGAGCAAGGCAAAATGCAGAGGAAGTCCA
 AAAAGACAGAAAAGATGACGTCAACTACAGCCAGGGTGTGGTGAAGCAG

ACGCGTACGCGGCCGCTCGAG – GFP Tag – GTTTAA

Protein Sequence:

>RG229062 representing NM_001166163
 Red=Cloning site Green=Tags(s)

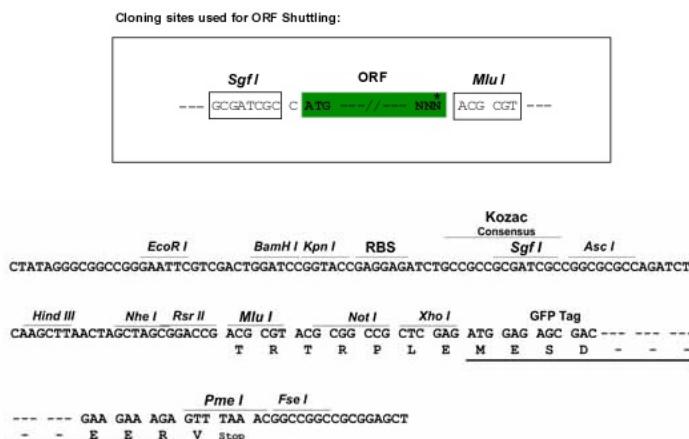
MLKTESSGERTTLRSASPHRNAYRTEFQALKSTFDKPKSDGEQKTEGEGSQSRRGRKYGSNVNRIKRLF
 MQMGMEPNENAAYIAKTRGKGGHSSPQRRMKPKFLEKTDGSSVVKLESSVSERISRFDTMYDGPSYSKFT
 ETRKMFERSVHESGQNNRYSPPKKEKAGGSEPQDEWGGSKSNRSTDSLSSRTEAVSPTVSQLSAVFE
 NTDSPSAIISEKAENNEYSVTGHYPLNLPSTVTNLDTFGHLKDSNSWPPSNKRGVDTEDAHKSNATPVP
 EVASKSTSLASIPGEEIQSKEPEDSTSNQTPDSDIDKDGPEEPCAESKAMPKSEIPSPQSQLEDAEAN
 LVGREAAKQQRKELAGGDFTPDASASSCGKEVPEDSNNFDGSHVYMHSDYNVYRVRSRYSNDWGETGTE
 QDEEEDSDENSYYQPDMEYSEIVGLPEEEEEIPANRKIKFSSAPIKVFNTYSNEDYDRRNDEVPVAASAE
 YELEKRVKLELFPVELEKDEDGLGISIIGMGVADAGLEKLGIFVKTVTEGGAAQRDGRIQVNDQIVEV
 DGISLVGVTQNF AATVLRNTKGNVRFVIGREKPGQVSEVAQLISQTLQERRQRELLEQHYAQYDADDE
 TGEYATDEEEDVGPVLPGSDMAIEVFELPENEDMFSPSELDTSKLSHKFKELQIKHAVTEAEIQKLLTK
 LQAAENEKVRWELEKTQLQQNIEENKERMLKLESYWIEAQTLCHTVNEHLKETQSQQYQALEKKYNKAKKL
 IKDFQQKELDFIKRQEAERKKIEDLEKAHLVEVQGLQVRIRDLEAEVFRLLKQNGTQVNNNNNIFERRTS
 LGEVSKGDTMENLDGKQTSQDGLSQDLNEAVPETERLDSKALKTRAQLSVKNRRQRPSTRRLYDSVSST
 DGEDSLERKNFTFNDDFPSSTSSADLSGLGAEPKTPGLSQSLALSSDEILDDGQSPKHSQCQNRVQEW
 SVQQVSHWMLMSLNLEQYVSEFSAQNIITGEQLLQLDGNKALKALGMTASQDRAVVKKKLKEMKMSLEKARKA
 QEKMEKQREKLRKEQEQQMQRKSKKTEKMTSTTAEGAGEQ

TRTRPLE – GFP Tag – V

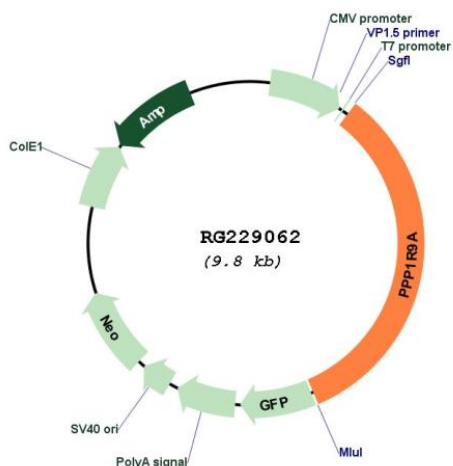
Restriction Sites:

Sgfl-MluI

Cloning Scheme:



Plasmid Map:



ACCN: NM_001166163

ORF Size: 3270 bp

OTI Disclaimer: The molecular sequence of this clone aligns with the gene accession number as a point of reference only. However, individual transcript sequences of the same gene can differ through naturally occurring variations (e.g. polymorphisms), each with its own valid existence. This clone is substantially in agreement with the reference, but a complete review of all prevailing variants is recommended prior to use. [More info](#)

OTI Annotation: This clone was engineered to express the complete ORF with an expression tag. Expression varies depending on the nature of the gene.

Components:	The ORF clone is ion-exchange column purified and shipped in a 2D barcoded Matrix tube containing 10ug of transfection-ready, dried plasmid DNA (reconstitute with 100 ul of water).
Reconstitution Method:	<ol style="list-style-type: none">1. Centrifuge at 5,000xg for 5min.2. Carefully open the tube and add 100ul of sterile water to dissolve the DNA.3. Close the tube and incubate for 10 minutes at room temperature.4. Briefly vortex the tube and then do a quick spin (less than 5000xg) to concentrate the liquid at the bottom.5. Store the suspended plasmid at -20°C. The DNA is stable for at least one year from date of shipping when stored at -20°C.
RefSeq:	<u>NM_001166163.1, NP_001159635.1</u>
RefSeq Size:	9601 bp
RefSeq ORF:	3273 bp
Locus ID:	55607
UniProt ID:	<u>Q9ULJ8</u>
Cytogenetics:	7q21.3
Protein Families:	Druggable Genome
Gene Summary:	This gene is imprinted, and located in a cluster of imprinted genes on chromosome 7q12. This gene is transcribed in both neuronal and multiple embryonic tissues, and it is maternally expressed mainly in embryonic skeletal muscle tissues and biallelically expressed in other embryonic tissues. The protein encoded by this gene includes a PDZ domain and a sterile alpha motif (SAM). It is a regulatory subunit of protein phosphatase I, and controls actin cytoskeleton reorganization. Alternatively spliced transcript variants encoding different isoforms have been found for this gene. [provided by RefSeq, Oct 2009]