

Product datasheet for **RG229060**

POLR3B (NM_001160708) Human Tagged ORF Clone

Product data:

Product Type:	Expression Plasmids
Product Name:	POLR3B (NM_001160708) Human Tagged ORF Clone
Tag:	TurboGFP
Symbol:	POLR3B
Synonyms:	C128; HLD8; INMAP; RPC2
Mammalian Cell Selection:	Neomycin
Vector:	pCMV6-AC-GFP (PS100010)
E. coli Selection:	Ampicillin (100 ug/mL)
ORF Nucleotide Sequence:	>RG229060 representing NM_001160708 Red=Cloning site Blue=ORF Green=Tags(s)

TTTTGTAATACGACTCACTATAGGGCGGCCGGAATTCGTCGACTGGATCCGGTACCGAGGAGATCTGCC
GCC**CGATCGCC**

ATGGACGTGCTAGCGGAGGAGTTTGGGAACCTGACTCCGGAGCAGCTGGCGGCCGCGATCCCGACTGTAG
AGGAAAAATGGAGGCTGCTTCCAGCATTTTTAAAGGTGAAAGGCCTTGAAACAGCATATAGATTCATT
TAACTATTTTCATTAATGTAGAGATAAAGAAGATAATGAAAGCAATGAAAAGTTACAAGTGACGCTGAC
CCTATGTGGTACTTAAAATATCTTAATATCTATGTTGGGCTTCTGATGTTGAAGAAAGCTTCAATGTAA
CTAGACCAGTGTCCCTCATGAGTGCCGTTTGGAGACATGACATACTCTGCCCTATTACAGTGGATAT
TGAATATACCCGAGGCAGCCAGAGGATCATCCGCAATGCCTTACCTATCGGCAGAATGCCATAATGCTA
CGTAGTTCAAACTGTGTTCTTACAGGAAAAACGCCAGCAGAATTTGCCAACTGAACGAATGTCCCTTAG
ATCCAGGTGGCTACTTTCATTGTTAAAGGAGTAGAAAAAGTTATTCTTATCCAAGAGCAGCTGTCTAAGAA
CAGGATCATCGTGGAGGCTGATAGAAAAGGGGCTGTTGGAGCTTCCAGTACCAGCTTACCCATGAGAAA
AAAAGCAGAACCAATATGGCTGTGAAACAAGGACGATTTATTTGAGGCATAACTTTGTGAGAAGATA
TACCCATTGTATCATATTTAAGCCATGGGTGTTGAGAGTGACCAGGAAATGTGCAGATGATTGGAAC
AGAGGAGCACGTGATGGCTGCATTTGGGCCAGTCTGGAAGAGTGCCAGAAAGCTCAGATTTTCACACAG
ATGCAGGCATTTAAAATATATAGGGAACAAGTAAGAAGGCAAGGATGTGGGGAGGTGGACCAAGAAAA
CCAAAATAGAAGAAGCAAGAGAGCTCCTGGCTTCCACCATTCTGACCCATGTCCAGTTAAGGAATTCAA
TTTCCGAGCCAAATGTATCTATACTGCAGTGATGGTGCGAAGAGTTATTCTGGCCCAAGGAGATAATAAA
GTTGACGACAGAGATTATTATGGTAACAAGCGACTGGAATTGGCAGGACAGCTTTTATCTCTTTTGG
AAGACTTGTTCAAAAATTTAATTCTGAAATGAAAAAGATTGCCGACCAGGTGATTCCTAAGCAAAGAGC
AGCCAGTTTGTGTTGTCAAACACATGCGCCAAGACCAGATACCAATGGCATGGTGAATGCTATTTCT
ACCGGAAATGGTCTTTAAAGAGATTTAAAATGGACCGCCAGGGTGAACCAAGTGCTGTCTCGCTTGT
CATATATACCGCACTGGGCATGATGACAAGAATCTTCCAGTTTAAAAAACGAGAAAAGTGAGTGG
TCCTCGCTCCCTCCAGCCATCTCAGTGGGAATGCTGTGCTCTCGGACACTCCTGAAGGAGAGGCATGT



[View online >](#)

```

GGTTTGGTTAAAACTTGGCCCTTATGACACACATCACAACCTGATATGGAAGATGGACCCATTGTTAAAT
TAGCCAGTAACTTGGGAGTAGAAGATGTGAATTTATTATGTGGGGAAGAGCTCTCTTACCCAAATGTGTT
TCTTGTCTTTCTTAATGGTAACATCTTAGGTGTCATTCGAGACCACAAAAAGCTAGTGAATACATTTCGA
CTCATGAGAAGAGCAGGATATATCAATGAATTTGTTTCCATCTCAACAAATCTTACAGATCGATGTGCT
ATATTTCTTCTGATGGGGGAAGGCTATGCAGACCTACATAATTGTCAAGAAACAGAAGCCAGCAGTCAC
AAATAAACATATGGAAGAGCTGGCCCAAGGGTACAGGAATTTGAAGATTTCTTACATGAGAGTCTGGTT
GAATATTTAGATGTGAATGAAGAAAATGATTGTAAACATTGCATGTACGAACACACAATTAATAAGACA
CCACCCACTTGGAGATTGAACCTTCACTCTTCTCGGCGTGTGTGCTGGACTTATCCCATACCCCTACCA
TAACCACTCACCCAGAAACACTTATCAGTGTGCCATGGGGAACCAAGCCATGGGTACTATAGGATACAAC
CAGCGAAACAGAATTGATACTCTCATGTATCTACTAGCATATCCACAAAAACCCATGGTTAAGACAAAA
CCATTGAATTGATAGAATTTGAGAACTGCCAGCTGGACAGAATGCAACAGTTGCTGTGATGAGCTATAG
TGGCTATGATATTGAAGATGCTCTTGTTTTAAACAAGGCCTTTAGACAGAGGCTTTGGGCGTTGCCTT
GTATATAAAAATGCTAAATGTACGTTGAAACGATACACCAATCAGACTTTTGATAAAGTGATGGGCCCCA
TGGTGGATGCTGCTACAAGGAAACCTATCTGGCGACATGAAATCTTAGATGCAGATGGTATTTGTTCTCC
AGGTGAGAAAGTAGAAAAACAACAGTGTGTAATAAGTCCATGCCACAGTGACTCAGATTCCTTTG
GAAGGAAGTAATGTACCACAGCAACCACAGTACAAAGATGTACCCATAACCTACAAGGAGCAACAGACT
CATATATTGAAAAAGTGATGATATCTTCAAATGCTGAAGATGCTTTTCTGATCAAAATGCTGCTGAGACA
GACAAGGCGTCCAGAAATTTGGAGACAAATTCAGCAGTCGTATGGGCAAAAAGGTGTTTGTGGCTTGATC
GTCCCCAGGAAGACATGCCATTTTGTGATTCTGGCATCTGTCCGGACATCATATGAACCCACACGGCT
TCCCATCACGAATGACGGTGGGGAAGCTCATTGAGCTGCTGGCTGGCAAGGCCGGTGTGCTGGACGGCAG
ATTCCACTACGGCACTGCGTTTGGAGGCAGTAAAGTGAAGGATGTGTGTGAGGACCTCGTTCGCCATGGT
TATAACTACTTGGGGAAGACTATGTTACATCCGGCATCACAGGTGAGCCCTTAGAAGCATACATCTATT
TTGGCCCCGTGTACTATCAGAAGCTGAAACACATGGTGTAGTAAAATGCATGCCCGGGCCCGGGGCCC
ACGAGCCGTCCTTACCAGGCAACCCACTGAAGGACGGTCTCGTGATGGTGGCTTGGCTCTCGGGGAATG
GAACGTGACTGTTAATCGGTTATGAGGCCAGTATGCTTTTGTAGAGAGACTAATGATTTCAAGTGATG
CCTTTGAGGTTGATGTCTGTGGCAGTGTGGACTTCTGGGGTATTCTGGCTGGTGCATTACTGCAAGTC
ATCCTGCCACGTGCTTCCCTCCGTATTCGTATGCTGCAAGCTGCTCTCCAGGAACTACAGTCTATG
AACATCATCCCCAGGTTAAAACTGTCCAAGTACAATGAA
    
```

ACGCGTACGCGGCCGCTCGAG - GFP Tag - GTTTAA

Protein Sequence:

>RG229060 representing NM_001160708
 Red=Cloning site Green=Tags(s)

```

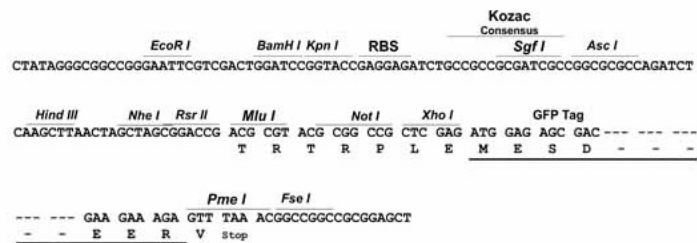
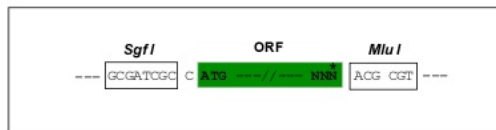
MDVLAEEFGNL TPEQLAAP IPTVEEKWRLL PAFLKVKGL VKQHIDSFNYF INVEIKKIMKANEKVTSDAD
PMWYLKYLNIYVGL PDVEESFNVTRPVSPHECRLRDMTYSAPITVDIEYTRGSQRIIRNALPIGRMPIML
RSSNCVL TGKTPAEFAKLN ECPLDPGGYF IVKGVEKVI L IQEQLSKNRI IVEADRKGAVGASVTSSTHEK
KSRTNMAVKQGRFYLRHNTL SEDIP I V I I F K A M G V E S D Q E I V Q M I G T E E H V M A A F G P S L E E C Q A Q I F T Q
MQALKYIGNKVRQRQMWGGGPKTKIEEARELLASTIL THVPVKEFNFRAKCIYTAVMVRVILAQGDNK
VDDRDYYGNKRLELAGQLLSLL FEDL F K F N S E M K K I A D Q V I P K Q R A A Q F D V V K H M R Q D Q I T N G M V N A I S
TGNWSLKRFRKMDRQGVTVL SRLSYISALGMMTRISSQFEKTRKVS G P R S L Q P S Q W M L C P S D T P E G E A C
GLVKNLALMTHITDMDGPIV K L A S N L G V E D V N L L C G E E L S Y P N V F L V F L N G N I L G V I R D H K K L V N T F R
LMRRAGYINEFVSI STNL T D R C V Y I S S D G G R L C R P Y I I V K K Q K P A V T N K H M E E L A Q G Y R N F E D F L H E S L V
EYLDVNEENDCNIAL YEHTINKDTHLE I E P F T L L G V C A G L I P Y P H H N Q S P R N T Y Q C A M G K Q A M G T I G Y N
QRNRIDTLMYLLAYPQKPMVKTKTIEL I E F E K L P A G Q N A T V A V M S Y S G Y D I E D A L V L N K A S L D R G F G R C L
VYKNAKCTLKRYTNQTFDKVMGPMLDAATRKP I W R H E I L D A D G I C S P G E K V E N K Q V L V N K S M P T V T Q I P L
EGSNVPQPQYKDVPI TYK G A T D S Y I E K V M I S S N A E D A F L I K M L L R Q T R R P E I G D K F S S R H G Q K G V C G L I
VPQEDMPFCDSGICPDI IMNPHGFPSRMTVGKLI E L L A G K A G V L D G R F H Y G T A F G G S K V K D V C E D L V R H G
YNYLGKDYVTSGITGEPL E A Y I Y F G P V Y Y Q K L K H M V L D K M H A R A R G P R A V L T R Q P T E G R S R D G G L R L G E M
ERDCLIGYGASMLLLERLMISSDAFEVDVCGQCGLL G Y S G W C H Y C K S S C H V S S L R I P Y A C K L L F Q E L Q S M
NIIPRLKLSKYNE
    
```

TRTRPLE - GFP Tag - V

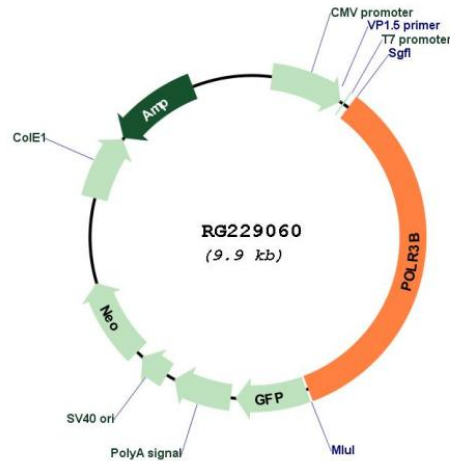
Restriction Sites: SgfI-MluI

Cloning Scheme:

Cloning sites used for ORF Shuttling:



Plasmid Map:



ACCN: NM_001160708

ORF Size: 3402 bp

OTI Disclaimer: Due to the inherent nature of this plasmid, standard methods to replicate additional amounts of DNA in *E. coli* are highly likely to result in mutations and/or rearrangements. Therefore, OriGene does not guarantee the capability to replicate this plasmid DNA. Additional amounts of DNA can be purchased from OriGene with batch-specific, full-sequence verification at a reduced cost. Please contact our customer care team at custsupport@origene.com or by calling 301.340.3188 option 3 for pricing and delivery.

The molecular sequence of this clone aligns with the gene accession number as a point of reference only. However, individual transcript sequences of the same gene can differ through naturally occurring variations (e.g. polymorphisms), each with its own valid existence. This clone is substantially in agreement with the reference, but a complete review of all prevailing variants is recommended prior to use. [More info](#)

OTI Annotation: This clone was engineered to express the complete ORF with an expression tag. Expression varies depending on the nature of the gene.

Components: The ORF clone is ion-exchange column purified and shipped in a 2D barcoded Matrix tube containing 10ug of transfection-ready, dried plasmid DNA (reconstitute with 100 ul of water).

- Reconstitution Method:**
1. Centrifuge at 5,000xg for 5min.
 2. Carefully open the tube and add 100ul of sterile water to dissolve the DNA.
 3. Close the tube and incubate for 10 minutes at room temperature.
 4. Briefly vortex the tube and then do a quick spin (less than 5000xg) to concentrate the liquid at the bottom.
 5. Store the suspended plasmid at -20°C. The DNA is stable for at least one year from date of shipping when stored at -20°C.

RefSeq:	NM_001160708.1 , NP_001154180.1
RefSeq Size:	4133 bp
RefSeq ORF:	3228 bp
Locus ID:	55703
UniProt ID:	Q9NW08
Cytogenetics:	12q23.3
Protein Families:	Transcription Factors
Protein Pathways:	Cytosolic DNA-sensing pathway, Metabolic pathways, Purine metabolism, Pyrimidine metabolism, RNA polymerase
Gene Summary:	This gene encodes the second largest subunit of RNA polymerase III, the polymerase responsible for synthesizing transfer and small ribosomal RNAs in eukaryotes. The largest subunit and the encoded protein form the catalytic center of RNA polymerase III. Mutations in this gene are a cause of hypomyelinating leukodystrophy. Alternatively spliced transcript variants encoding multiple isoforms have been observed for this gene. [provided by RefSeq, Dec 2011]