

## Product datasheet for **RG229049**

### GLI1 (NM\_001160045) Human Tagged ORF Clone

#### Product data:

Product Type:	Expression Plasmids
Product Name:	GLI1 (NM_001160045) Human Tagged ORF Clone
Tag:	TurboGFP
Symbol:	GLI1
Synonyms:	GLI; PAPA8; PPD1
Mammalian Cell Selection:	Neomycin
Vector:	pCMV6-AC-GFP (PS100010)
E. coli Selection:	Ampicillin (100 ug/mL)
ORF Nucleotide Sequence:	>RG229049 representing NM_001160045 Red=Cloning site Blue=ORF Green=Tags(s)

TTTTGTAATACGACTCACTATAGGGCGGCCGGAATTCGTCGACTGGATCCGGTACCGAGGAGATCTGCC  
GCC**CGATCGCC**

ATGTTCAACTCGATGACCCACCACCAATCAGTAGCTATGGCGAGCCCTGCTGTCTCCGGCCCTCCCCA  
GTCAGGGGGCCCCAGTGTGGGGACAGAAGGACTGTCTGGCCCGCCCTTCTGCCACCAAGCTAACCTCAT  
GTCCGGCCCCACAGTTATGGGCCAGCCAGAGACCAACAGCTGCACCGAGGGCCCACTTTTTCTTCT  
CCCCGGAGTGCAGTCAAGTTGACCAAGAAGCGGGCACTGTCCATCTCACCTCTGTCGGATGCCAGCTGG  
ACCTGCAGACGGTTATCCGCACCTCACCCAGCTCCCTCGTAGCTTTCATCAACTCGCGATGCACATCTCC  
AGGAGGCTCCTACGGTCACTCTCCATTGGCACCATGAGCCCATCTCTGGGATCCAGCCAGATGAAT  
CACAAAAAGGGCCCTCGCCTTCTTTGGGGTCCAGCCTTGTGGTCCCCATGACTCTGCCGGGGTGGGA  
TGATCCCACATCCTCAGTCCCAGGGACCCCTTCCAACCTGCCAGCTGAAGTCTGAGCTGGACATGCTGGT  
TGGCAAGTGCCGGGAGGAACCCCTTGAAGGTGATATGTCCAGCCCAACTCCACAGGCATACAGGATCCC  
CTGTTGGGGATGCTGGATGGCGGGAGGACCTCGAGAGAGAGGAGAAGCGTGAGCCTGAATCTGTGTATG  
AACTGACTGCCGTTGGGATGGCTGCAGCCAGGAATTTGACTCCAAGAGCAGCTGGTGCACCACATCAA  
CAGCGAGCACATCCACGGGGAGCGGAAGGAGTTCTGTGCCACTGGGGGGGCTGCTCCAGGGAGCTGAGG  
CCCTTCAAAGCCCAGTACATGCTGGTGGTTCACATGCGCAGACACACTGGCGAGAAGCCACACAAGTGCA  
CGTTTGAAGGGTGCCGGAAGTCATACTACGCCTCGAAAACCTGAAGACGCACCTGCGGTACACACGGG  
TGAGAAGCCATACATGTGTGAGCACGAGGGCTGCAGTAAAGCCTTCAGCAATGCCAGTGACCGAGCCAAG  
CACCAGAATCGGACCCATTCCAATGAGAAGCCGTATGTATGTAAGCTCCCTGGCTGCACCAAACGCTATA  
CAGATCCTAGCTCGTGCGAAAACATGTCAAGACAGTGCATGGTCTGACGCCCATGTGACCAAACGGCA  
CCGTGGGGATGGCCCCCTGCCTCGGGCACCATCCATTTCTACAGTGGAGCCCAAGAGGGAGCGGGAAGGA  
GGTCCCATCAGGGAGGAAAGCAGACTGACTGTGCCAGAGGGTCCATGAAGCCACAGCCAAGCCCTGGG  
CCCAGTCATCCTGCAGCAGTGACCCTCCCGGCAGGGAGTGCAGCCAATACAGACAGTGGTGTGGAAT  
GACTGGCAATGCAGGGGGCAGCACTGAAGACCTCTCCAGCTTGGACGAGGGACCTTGATTGCTGGCACT



[View online »](#)

GGTCTGTCCACTCTTCGCCGCTTGAGAACCTCAGGCTGGACCAGCTACATCAACTCCGGCCAATAGGGA  
 CCCGGGTCTCAAAGTCCCAGCTTGTCCACACCCGGTACCAGTGTGCCGCCGCGTGGGCCCCCAGT  
 CTCTCTTGAACGCCGAGCAGCAGCTCCAGCAGCATCAGCTCTGCCTATACTGTGAGCCGCCCTCTCC  
 CTGGCCTCTCCTTCCCCCTGGCTCCCCACCAGAGAATGGAGCATCCTCCCTGCCTGGCCTTATGCCTG  
 CCCAGCACTACCTGCTTCGGGCAAGATATGCTTCAGCCAGAGGGGGTGGTACTTCGCCCACTGCAGCATC  
 CAGCCTGGATCGGATAGGTGGTCTTCCCATGCCTCCTTGGAGAAGCCGAGCCGAGTATCCAGGATAACA  
 CCAATGCAGGGGTACCCCGAGGGCCAGTGACCCAGCCAGGCTGCTGACCGCTCAGTCCAGTAGAG  
 TCCAGAGGTTCAAGAGCCTGGGCTGTCCATACCCACCCACTGTGGCAGGGGGAGACAGAAGCTTGA  
 TCCTTACCTCCCAACCTCTGTCTACTACCACAGCCCCCAGCATCACTGAGAATGCTGCCATGGATGCT  
 AGAGGGCTACAGGAAGAGCCAGAAGTTGGGACCTCCATGGTGGCAGTGGTCTGAACCCCTATATGGACT  
 TCCCACCTACTGATACTCTGGGATATGGGGACCTGAAGGGGCAGCAGCTGAGCCTTATGGAGCGAGGGG  
 TCCAGGCTCTCTGCCTTGGGCTGGTCCACCACCAACTATGGCCCCAACCCCTGTCCCAGCAGGCC  
 TCATATCCTGACCCACCAAGAAACATGGGGTGAGTTCCTTCCACTCTGGGCTGTACCCAGGCCCA  
 AGGCTCTAGGTGGAACCTACAGCCAGTGTCTCGACTTGAACATTATGGACAAGTGAAGTCAAGCCAGA  
 ACAGGGGTGCCAGTGGGCTGACTCCACAGGACTGGCACCTGCCTCAATGCCACCCAGTGAAGGGG  
 CCCCACATCCACAGCCTCTCTTTCCATTACCCACAGCCCTCCTCCCAATATCTCCAGTACAGGCC  
 CCTATACCCAGCCACCCCTGATTATCTTCTTTCAGAACCCAGGCCTTGCTGGACTTTGATTCCCCAC  
 CCATTCCACAGGGCAGCTCAAGGCTCAGCTTGTGTGTAATTATGTTCAATCTCAACAGGAGCTACTGTGG  
 GAGGGTGGGGCAGGGAAGATGCCCCGCCAGGAACCTTCTACCAGAGTCCCAAGTTTCTGGGGGTT  
 CCCAGGTTAGCCCAAGCCGTGCTAAAGTCCAGTGAACACATATGGACCTGGCTTTGGACCAACTTGC  
 CAATCACAAAGTCAGGTTCTATCCCACCCCTTACCATGCCATGAAAATTTGTAGTGGGGCAAATAGG  
 GCTTACATAGGGCAGCAGCACCACCTCGACTTCTGCCCATTTGCCACTTGTATGGGCTCTCAAAG  
 TGGGAGGCACAAACCCAGCTGTGGTCACTCTGAGGTGGCAGGCTAGGAGGGGGTCTGCCTTGTACCC  
 TCTCCCGAAGGACAGGTATGTAACCCCTGGACTCTTGTATCTTGACAACACTCAGTGGACTTTGTG  
 GCTATTCTGGATGAGCCCAAGGGCTGAGTCTCTCCTTCCCATGATCAGCGGGCAGCTCTGGACATA  
 CCCCACCTCCCTCTGGGCCCCCAACATGGCTGTGGGCAACATGAGTGTCTTACTGAGATCCCTACCTGG  
 GAAACAGAATTCTCAACTCTAGTGCC

ACGCGTACGCGGCCGCTCGAG - GFP Tag - GTTTAA

**Protein Sequence:**

>RG229049 representing NM\_001160045  
 Red=Cloning site Green=Tags(s)

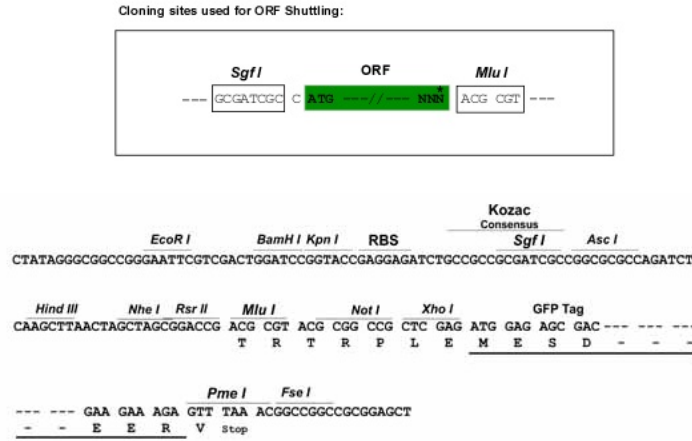
MFNSMTPPPISSEYGEPCCLRPLPSQGAPSVGTEGLSGPPFCHQANLMSGPHSYGPARETNSCTEGPLFSS  
 PRSAVKLTKKRALSIPLSDASLDLQTVIRTSPSSLVAFINSRCTSPGGSYGHLSIGTMSPSLGFPAQMN  
 HQKGPSPSFGVQPCGPHDSARGGMIPHPQSRGPFPTCQLKSELMLVGKREEPLEGDMSSPNSTGIQDP  
 LLGMLDGREDLREEKREPEVSYETDCRWDGCSQEFDSQEQLVHHINSEHIHGERKEFVCHWGGCSREL  
 PFKAQYMLVVHMRRHTGEKPHKCTFEGCRKSYSRLENLKTHLRSHTGEKPYMCEHEGCSKAFSNASDRAK  
 HQNRTHSNEKPYVCKLPGCTKRYTDPSSLRKHVKTVHGPDHVTKRHRGDGPLPRAPSIISTVEPKREREG  
 GPIREESRLTVPEGAMKQPSPGAQSSCSSDHSPAGSAANTDSGVEMTGNAGGSTEDLSSLDEGPICAGT  
 GLSTLRRLENLRDLQHLRPIGTRGLKLPSSLHTGTTVSRVGGPPVSLERRSSSSSSISSAYTVSRRSS  
 LASPFPPGSPENGASSLPGLMPAQHYLLRARYASARGGGTSPTAASSLDRIGGLPMPWPWSRAEYPGYN  
 PNAGVTRRASDPAAADRPAPARVQRFKSLGCVHTPPTVAGGGQNFDPYLPYPTSVYSPQPPSITENAAMDA  
 RGLQEEPEVGTSMVGSGLNPYMDFPPTDLGYGGPEGAAAEPYGARGPGLPLPGPPTNYGPNPCPQQA  
 SYPDPTQETWGEFSPHSLYGPKALGGTYSQCPRLHYGQVQVQKPEQGCPVGSSTGLAPCLNAHPSEG  
 PPHPQPLF SHYPQSPPPYQLQSGPYTQPPDYLPSEPRCLDFDSPTHSTGQLKAQLVCNYVQSQQLLW  
 EGGGREDAPAEPSYQSPKFLGGSQVSPSRAPVNTYGPFGPNLPHKSGSYPTSPCHENFVVGANR  
 ASHRAAAPRLLPPLPTCYGPLKVGGTNPSCGHPEVGRLLGGGALYPPPEGQVCNPLDSLDELNTQLDFV  
 AILDEPQGLSPPPSHDQRGSSGHTPPPSGPPNMAVGNMSVLLRSLPGETEFNLSSA

TRTRPLE - GFP Tag - V

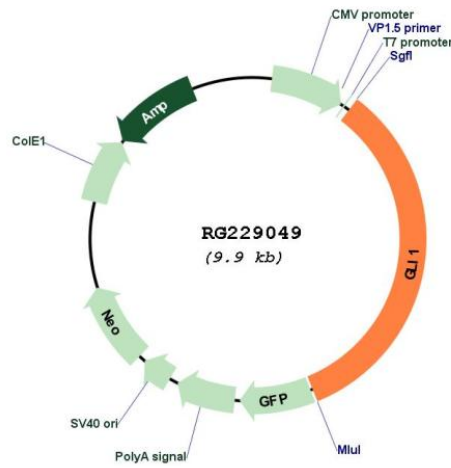
**Restriction Sites:**

Sgfl-MluI

Cloning Scheme:



Plasmid Map:



ACCN: NM\_001160045

ORF Size: 3321 bp

<b>OTI Disclaimer:</b>	Due to the inherent nature of this plasmid, standard methods to replicate additional amounts of DNA in E. coli are highly likely to result in mutations and/or rearrangements. Therefore, OriGene does not guarantee the capability to replicate this plasmid DNA. Additional amounts of DNA can be purchased from OriGene with batch-specific, full-sequence verification at a reduced cost. Please contact our customer care team at <a href="mailto:custsupport@origene.com">custsupport@origene.com</a> or by calling 301.340.3188 option 3 for pricing and delivery.
	The molecular sequence of this clone aligns with the gene accession number as a point of reference only. However, individual transcript sequences of the same gene can differ through naturally occurring variations (e.g. polymorphisms), each with its own valid existence. This clone is substantially in agreement with the reference, but a complete review of all prevailing variants is recommended prior to use. <a href="#">More info</a>
<b>OTI Annotation:</b>	This clone was engineered to express the complete ORF with an expression tag. Expression varies depending on the nature of the gene.
<b>Components:</b>	The ORF clone is ion-exchange column purified and shipped in a 2D barcoded Matrix tube containing 10ug of transfection-ready, dried plasmid DNA (reconstitute with 100 ul of water).
<b>Reconstitution Method:</b>	<ol style="list-style-type: none"> <li>1. Centrifuge at 5,000xg for 5min.</li> <li>2. Carefully open the tube and add 100ul of sterile water to dissolve the DNA.</li> <li>3. Close the tube and incubate for 10 minutes at room temperature.</li> <li>4. Briefly vortex the tube and then do a quick spin (less than 5000xg) to concentrate the liquid at the bottom.</li> <li>5. Store the suspended plasmid at -20°C. The DNA is stable for at least one year from date of shipping when stored at -20°C.</li> </ol>
<b>RefSeq:</b>	<a href="#">NM_001160045.1</a> , <a href="#">NP_001153517.1</a>
<b>RefSeq Size:</b>	3414 bp
<b>RefSeq ORF:</b>	2937 bp
<b>Locus ID:</b>	2735
<b>UniProt ID:</b>	<a href="#">P08151</a>
<b>Cytogenetics:</b>	12q13.3
<b>Protein Families:</b>	Adult stem cells, Cancer stem cells, Druggable Genome, Embryonic stem cells, ES Cell Differentiation/IPS, Stem cell relevant signaling - DSL/Notch pathway, Transcription Factors
<b>Protein Pathways:</b>	Basal cell carcinoma, Hedgehog signaling pathway, Pathways in cancer
<b>Gene Summary:</b>	This gene encodes a member of the Kruppel family of zinc finger proteins. The encoded transcription factor is activated by the sonic hedgehog signal transduction cascade and regulates stem cell proliferation. The activity and nuclear localization of this protein is negatively regulated by p53 in an inhibitory loop. Multiple transcript variants encoding different isoforms have been found for this gene. [provided by RefSeq, May 2009]